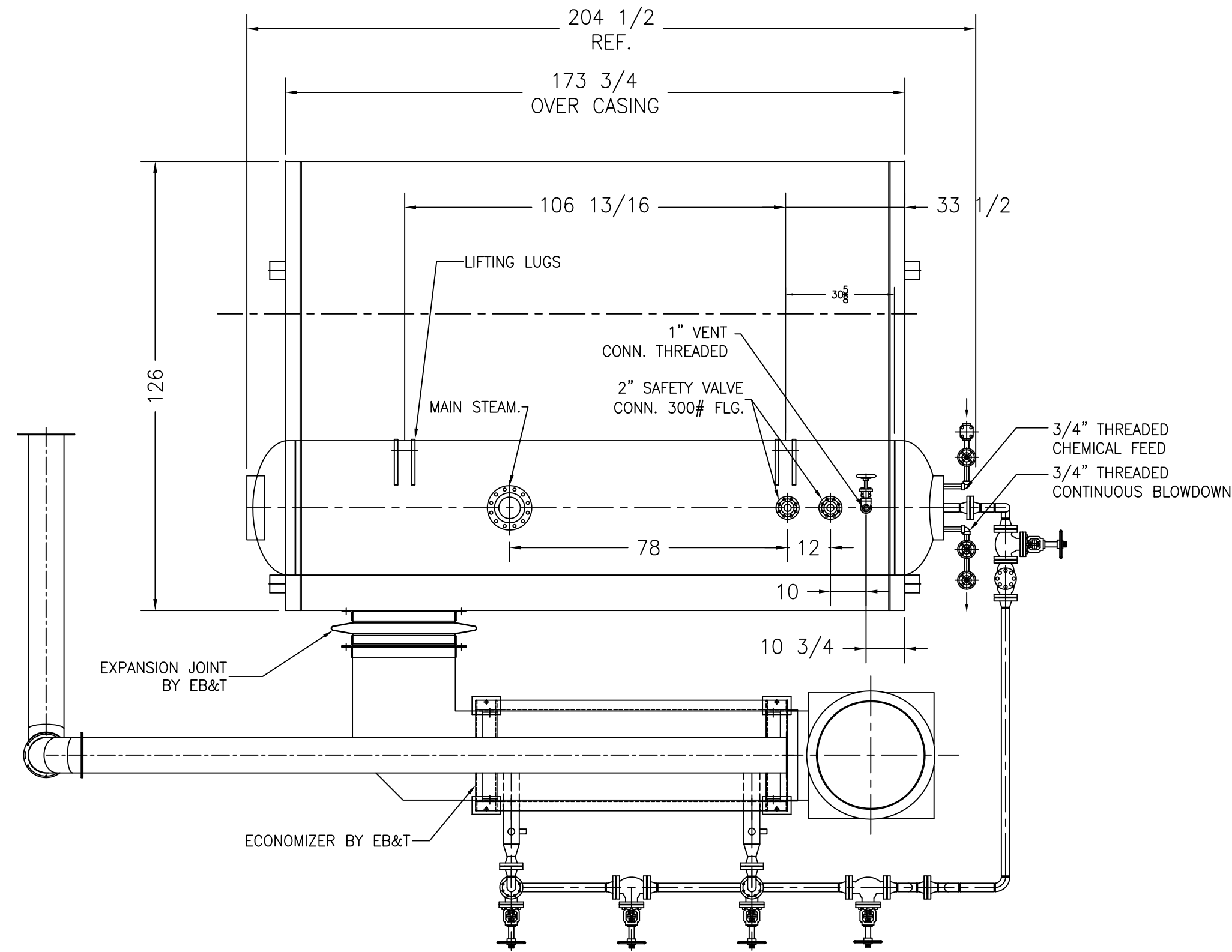


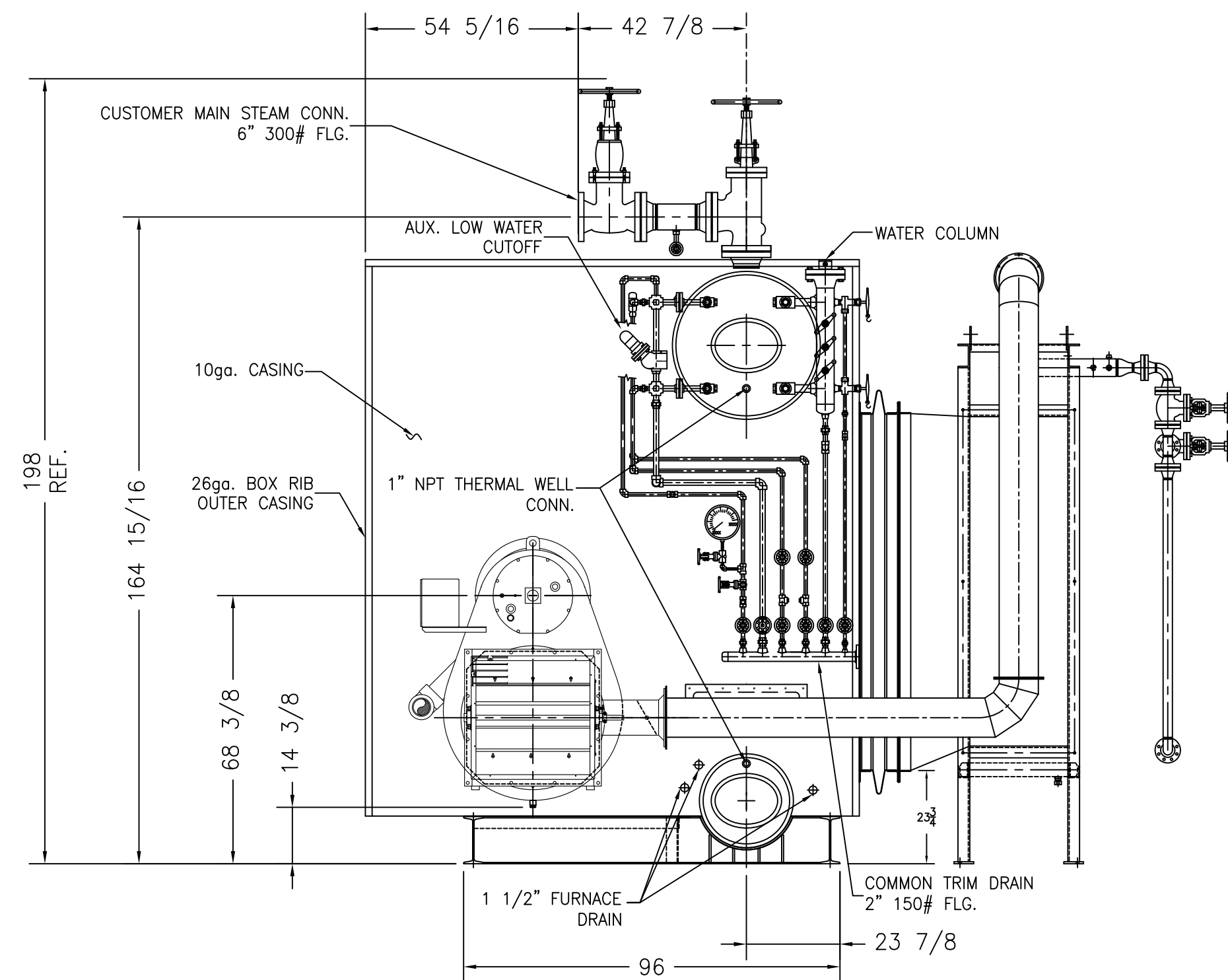
BOILER DATA

MODEL NO.	25-Dr-250
GROSS CAPACITY (SATURATED STEAM)	25,000 LBS./HR.
DESIGN PRESSURE	250 PSIG
OPERATING PRESSURE @ DRUM OUTLET	125 PSIG
SATURATED STEAM TEMPERATURE	353 DEG. F.
FURNACE VOLUME	510 CU.FT.
RADIANT HEATING	370 SQ.FT.
CONVECTION HEATING SURFACE	1,677 SQ.FT.
TOTAL EFFECTIVE HEATING SURFACE	2,047 SQ.FT.
FEEDWATER TEMP.	228°F.
ELEVATION	900 FT.
FUEL	
PRIMARY	NATURAL GAS
SECONDARY	NO. 2 FUEL OIL
EFFICIENCY	
PRIMARY FUEL	83.41%
SECONDARY FUEL	86.94%

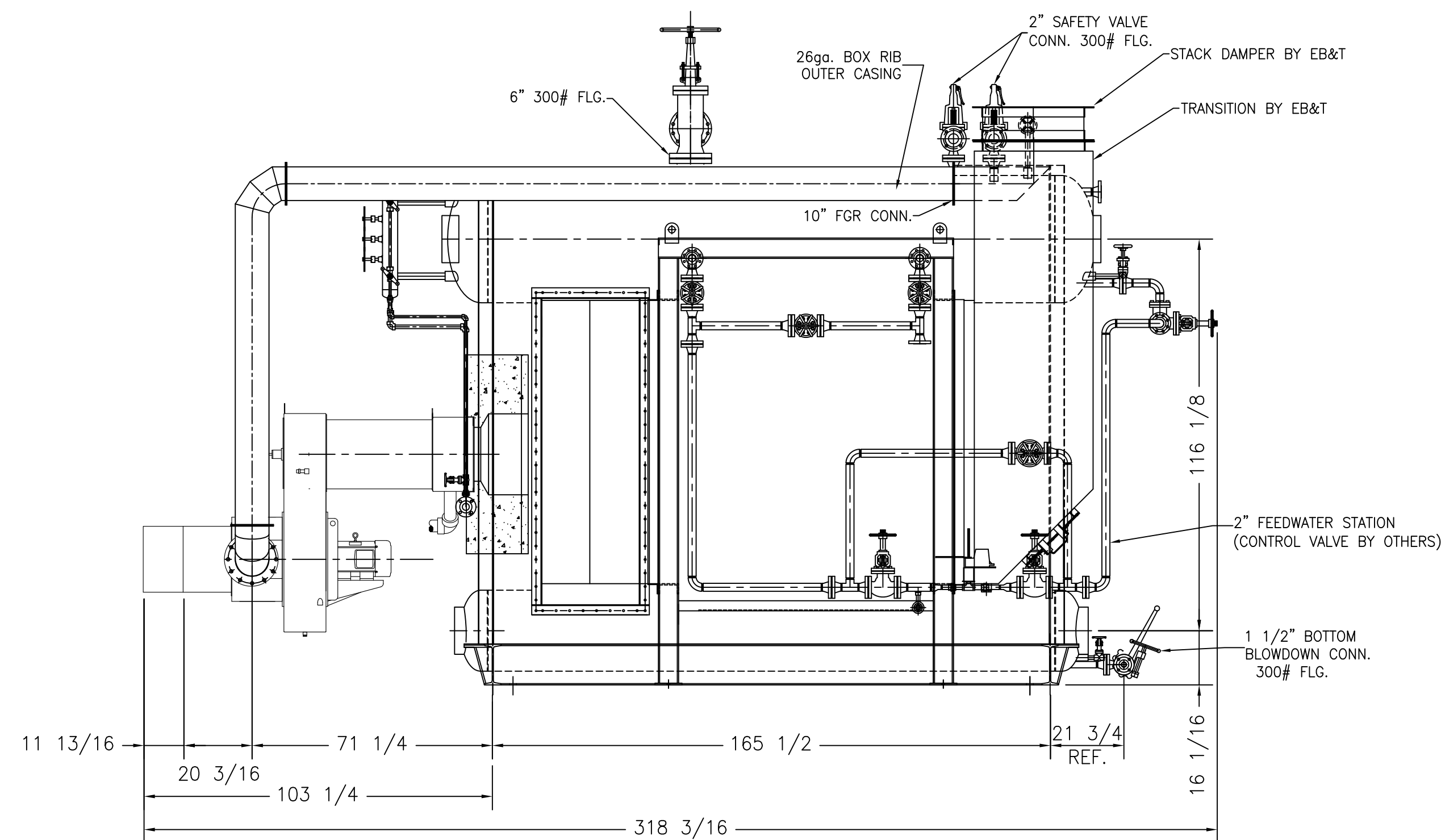
NOTES:
DESIGN AND FABRICATED ACCORDING TO ASME SECTION I,
FOR POWER BOILERS 2010 EDITION.



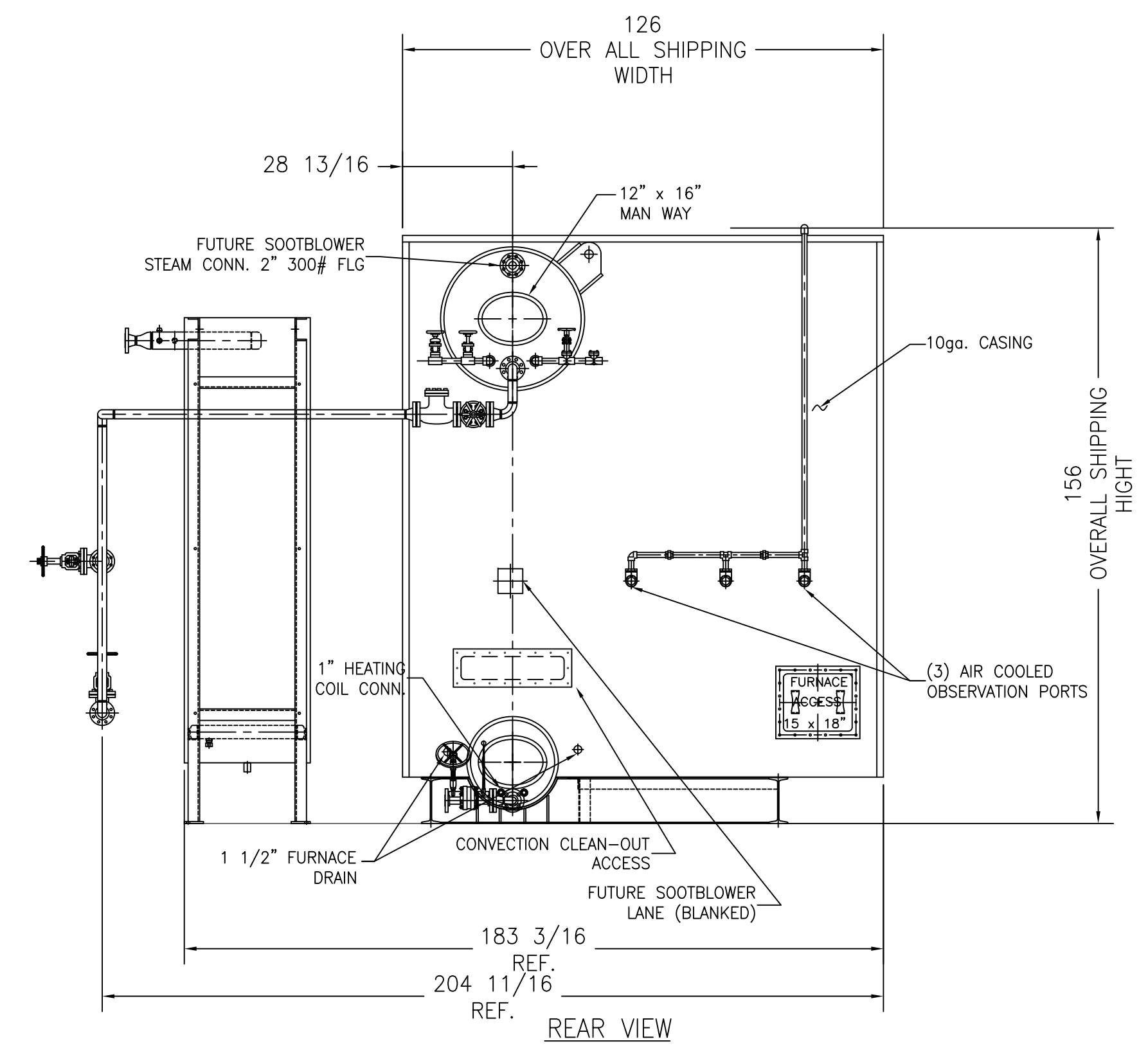
TOP VIEW



FRONT VIEW



SIDE VIEW



REAR VIEW

(3) IDENTICAL UNITS REQUIRED

DIMENSION LIMITS UNLESS OTHERWISE SPECIFIED ARE		ENGLISH BOILER & TUBE, INC. 2890 SEVEN HILLS BLVD. · RICHMOND, VA. 23231	
X.X	Equals ±0.06	DRAWING NAME	
X.XX	Equals ±0.015	BOILER G.A. (RIGHT HAND)	
X.XXX	Equals ±0.005	CONTRACTOR	
Angles ±0.50°		PROJECT	
Fractions ±1/16		GOOD SAMARITAN HOSPITAL	
SCALE	DATE	DRAWN BY	CHECKED BY
3/8" = 12"	2/24/11	CCB	
SIZE	MODEL NUMBER	DRAWING NUMBER	REV. #
D	25-Dr-250	31-003-101	5

NOTICE
THIS DRAWING AND ALL FEATURES SEPARATELY OR COLLECTIVELY DISCLOSED THEREIN OR EMBODIED THEREIN ARE THE PROPERTY OF ENGLISH BOILER & TUBE, INC. THE DRAWING SHALL NOT BE REPRODUCED OR COPIED, AND MUST BE RETURNED IMMEDIATELY UPON REQUEST. NO INFORMATION EMBODIED THEREIN SHALL BE COMMUNICATED, DISCLOSED OR USED IN ANY MANNER, IN WHOLE OR IN PART EXCEPT AS AND TO THE EXTENT PREVIOUSLY EXPRESSLY AUTHORIZED IN WRITING BY THE COMPANY.

REVISION #	DRAWN	CHECK	APPROVED	REVISION #	DESCRIPTION	DRAWN	CHECK	APPROVED	REVISION #	DESCRIPTION	DRAWN	CHECK	APPROVED
5	SJ			5	FURNACE DRAIN ADDED	SJ			1	REVISED AS PER COMMENTS 3-7	CCB		
3	SJ			3	ADDED FGR DUCT	SJH			2	DIMENSION REFERENCE REVISED	SJ		
4				4	REVISED PER CUSTOMER COMMENTS	SJH							