

Uesco Industries, Inc.
Operations And Maintenance Manuals



General Information

Serial No.: 123284 - 123290

Job No.: C-37931

Sold To:

Ship To

Crane Sales & Service
 5910 S. 27th Street

Intersystems
 9575 North 109th Ave

Omaha NE 68107

Omaha NE 68142

Customer PO#.....: W054366TR

Ship Date :

Equipment Specifications

Crane Description : SINGLE GIRDER, TOP RUNNING, DUAL MOTOR

Capacity : 6 TON

Span : 46'-6"

End Truck(s) : ST 631008

Drive Motor(s) : 192-460B-3/4S

Hoist :
 DH6M30-22M75
 DH6M30-22M75

				Speeds		Motors
Bridge Speed.....:	120 F. P. M.	Two	Step	Inverter control		2 0.75 Hp.
Trolley Speed.....:	75 F. P. M.	Two	Step	Inverter control		0.4 Hp.
Aux. Trolley Speed.:	75 F. P. M.	Two	Step	Inverter control		0.4 Hp.
Hoist Speed.....:	22 F. P. M.	Two	Step	Inverter control		5.7 Hp.
Aux. Hoist Speed....:	22 F. P. M.	Two	Step	Inverter control		5.7 Hp.

Line Voltage.....: 460 **Crane Control Volt:** 110 **Hoist Control Volt.:** 110

Control Location....: Radio w/Backup Pushbutton Suspended Hoist

Additional Data.....: Indoor Service. (6)-200 Amp. #310990 And (1)-200 Amp. #399355 (Ground) Conductix Safe-Lec II Collectors. Bridge Electrification Flat Cable From Steel Track. Strobe light Activated When Crane Is Powered On. Dual-Hoist Control With Selector Switch. Enrange Flex 8EX Radio.

**IMPORTANT!! Specify your UESCO Crane Serial Number When Ordering Replacement Parts.
 Note!! Not All Equipment May Apply To Your Crane.**

CRANE SERIAL NO. 123284 - 123290

Uesco Industries, Inc.
Operations And Maintenance Manuals



Control Box ID: W3284-90S

<u>QTY</u>	<u>DESCRIPTION</u>	<u>PART NO.</u>
PANEL COMPONENTS		
1	SELECTOR SWITCH	CBDH5S
1	30A DISCONNECT	CDNF32A3
1	SHAFT (REPLACES CDS330S)	BDS330S
1	SURGE SUPPRESSOR	RCS1A6
2	HOLD DOWN SPRING CUBE RELAY	700-HN114
2	10A 250V AC CUBE RELAY BASE	700-HN104
2	4 N.O.4 N.C. 10 A CUBE RELAY	700-HC24A1
21	GROUND TERM. BLOCK	1492-JG6
1	MCS 30 AMP. NON-REV. CONTACTOR	100-C30D10
1	200VA 460/230 TRANSFORMER	1497-DBASX1N
2	30 AMP FUSE BLOCK CLASS CC FUSE	BM6033PQ
4	AUX. FUSE BLOCK DIN RAIL CLIP	DRA1
1	TIME DELAY TRANSFORMER FUSE	FNM 2.5
3	6 AMP. MIDGET TIME DELAY FUSE	FNQ 6
3	30 AMP. MIDGET TIME DELAY FUSE	FNQ 30
1	MINI STROBE LIGHT 120 VOLT-AMBER	LP3P-120A
1	4 AMP INVERTER WITH BRAKE RELAY	MSM4ARP
1	ALL 2 SPEED 3 MOTION With Dual Hoist Selecti	Enrange Flex ex8

IMPORTANT!! Specify your UESCO Crane Serial Number When Ordering Replacement Parts.
Note!! Not All Equipment May Apply To Your Crane.

CRANE SERIAL NO. 123284 - 123290

Uesco Industries, Inc.
Operations And Maintenance Manuals



<u>QTY</u>	<u>DESCRIPTION</u>	<u>PART NO.</u>
Festoon Cable Support Type (Track Quantity Include I. PB. if Supplied)		
5	14 Ga. Galvanized Steel C-Track 10 Ft.	530754
0	Low Profile Track Hanger Assembly	22325
4	Track Joint Assembly	75813
Festoon Cable Carriers		
17	3 inch Steel Trolley Assembly	21991
0	3 inch Steel Lead Carrier Assembly	22168
Festoon Cables		
3	58 ft. 8 cond. #16 Flat Cable	22607
0	58 ft. 8 cond. #14 Flat Cable	23324
2	58 ft. 4 cond. #12 Flat Cable	22994
0	58 ft. 4 cond. #10 Flat Cable	22542
0	58 ft. Auxiliary Flat Cable	11111
Runway Collectors		
6	100 Amp., Vertical Mount, Single Shoe	310990
Miscellaneous Items		
0		

IMPORTANT!! Specify your UESCO Crane Serial Number When Ordering Replacement Parts.
Note!! Not All Equipment May Apply To Your Crane.

CRANE SERIAL NO. 123284 - 123290

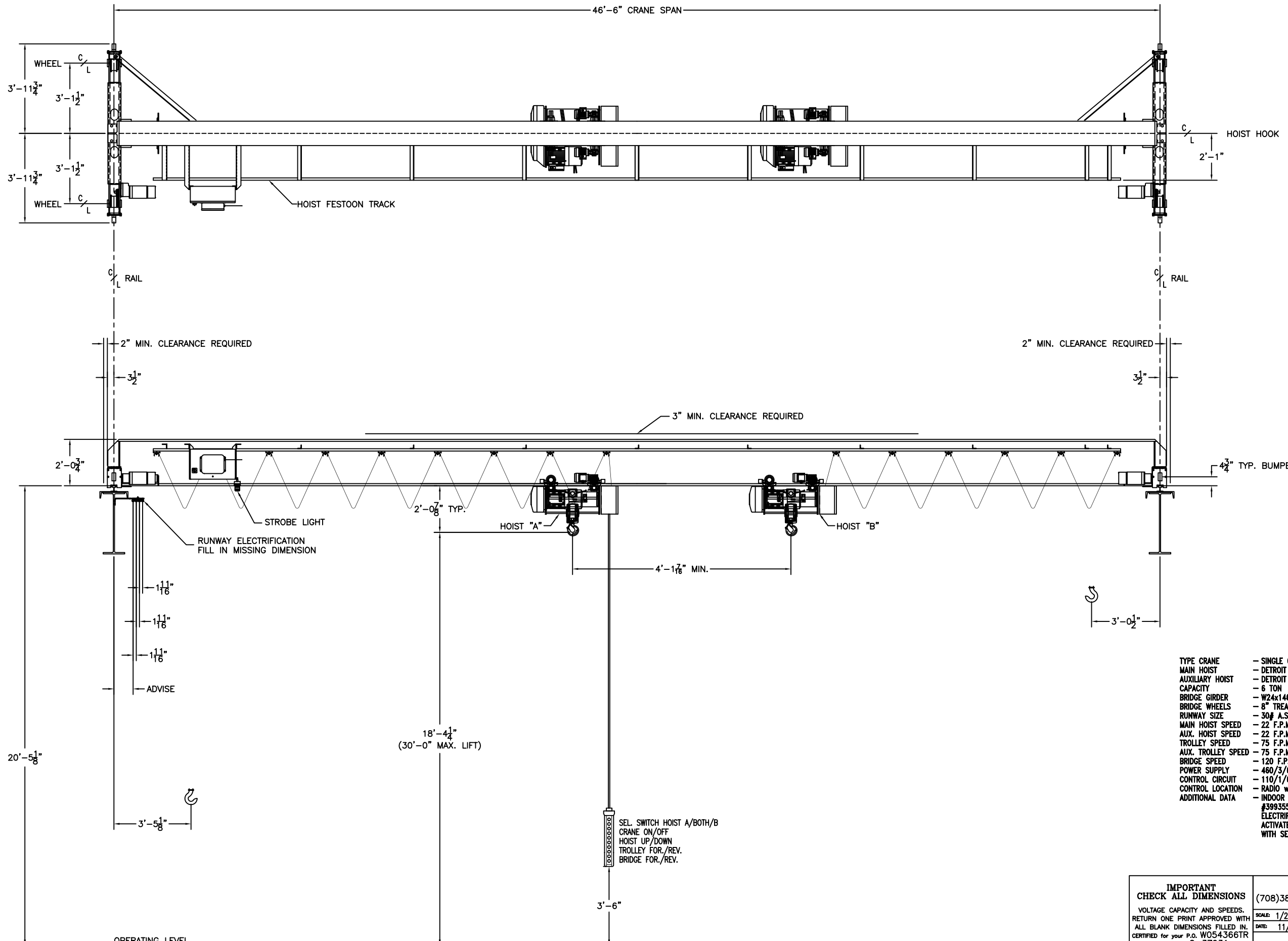
Uesco Industries, Inc.
Operations And Maintenance Manuals



<u>QTY</u>	<u>DESCRIPTION</u>	<u>PART NO.</u>
Pushbutton Enclosure and Inserts		
1	10 Button Enclosure (Thick Back)	34287
1	Maintain On/Off Insert	34292
1	Hoist Insert...: Two Speed Insert	34296
1	Trolley Insert Two Speed Insert	34296
1	Bridge Insert. Two Speed Insert	34296
0	Aux. Insert....	
0	Aux. Insert....	
1	Blank Rubber Insert	34304
1	3 Position Selector Switch	PT12
Pushbutton Cable		
20	ft. 16 Cond. #16 Round Cable	83094
Strain Relief		
19	ft. 3/16 Plastic Coated Strain Cable	.1250-WR PLASTIC
2	3/16 Crosby Clamp	.1875-DF-CLIP
Festoon Cable Carriers		
0	End Clamp And Saddle Assembly	21957
0	3 inch Steel Trolley Assembly	21991
0	Control Trolley	2366
Festoon Cables		
0	0 ft. 12 cond. #16 Flat Cable	23324
0	0 ft. 8 cond. #16 Flat Cable	22607
Miscellaneous Items		
1	Base Kit	37766
2	Hood Kit	41030

IMPORTANT!! Specify your UESCO Crane Serial Number When Ordering Replacement Parts.
Note!! Not All Equipment May Apply To Your Crane.

CRANE SERIAL NO. 123284 - 123290



IMPORTANT Upper limit is an emergency stop only and is not to be used as an automatic shut off during normal operation.

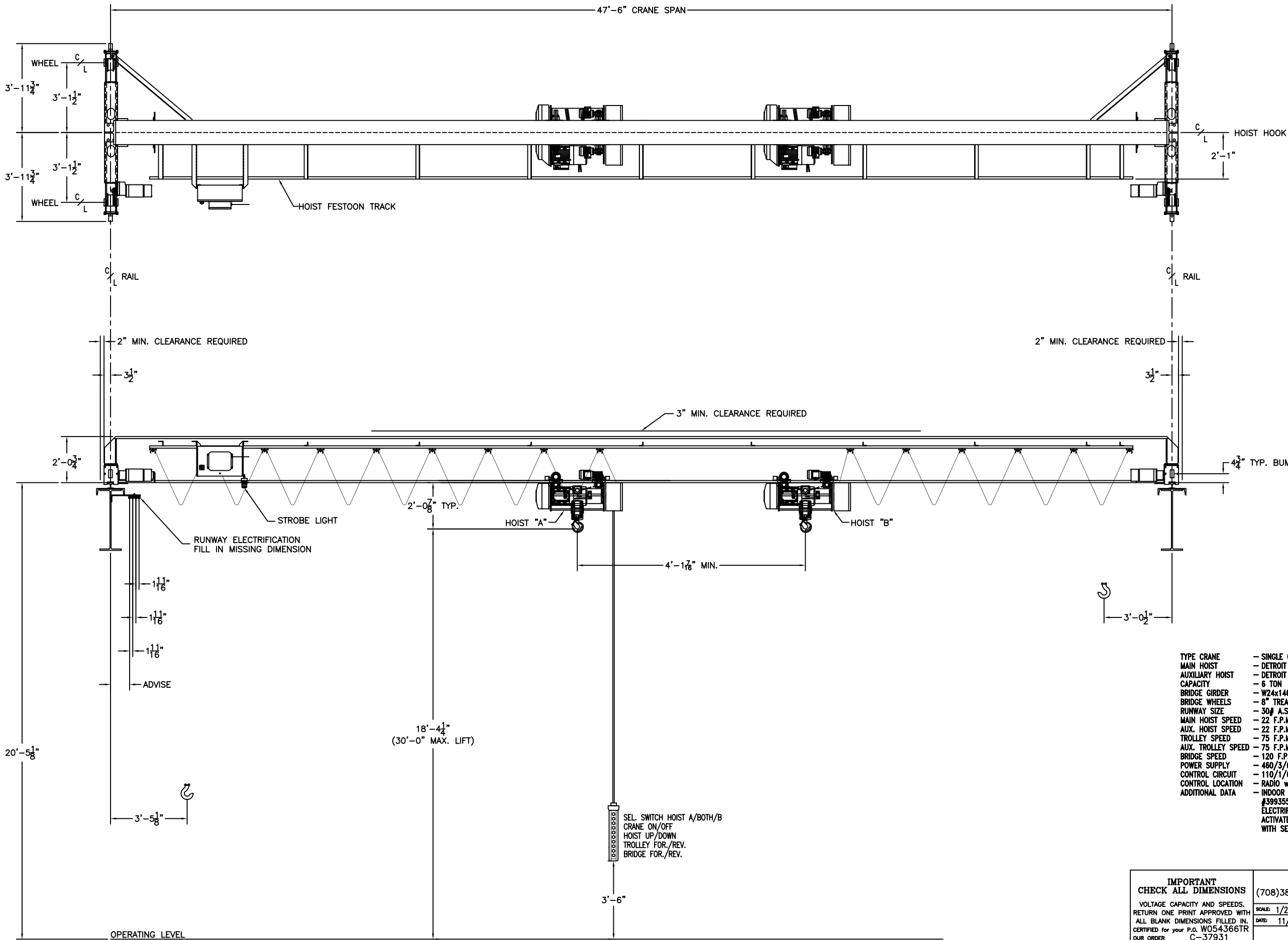
WEIGHTS
 CRANE WEIGHT (LESS HOIST) = 8,715#
 HOIST = 1,200#
 TRUCKS = 1,160#
 DRIVES = 160#
 DRIVE BEAM = 7,395#
 AUX. HOIST = 1,200#

MOTOR HORSEPOWERS
 TOTAL BRIDGE HP. = 2 @ .75
 HOIST HP. = 5.7
 TROLLEY HP. = .4
 DISCONNECT FUSED = 30 AMP
 AUX. HOIST HP. = 5.7
 AUX. TROLLEY HP. = .4

TYPE CRANE - SINGLE GIRDER, TOP RUNNING, DUAL MOTOR
MAIN HOIST - DETROIT CAT. NO.: DH6M30-22M75
AUXILIARY HOIST - DETROIT CAT. NO.: DH6M30-22M75
CAPACITY - 6 TON
BRIDGE GIRDER - W24x146#
BRIDGE WHEELS - 8" TREAD DIAMETER
RUNWAY SIZE - 30# A.S.C.E. RAIL ON W33x118# w/C15x33.9#
MAIN HOIST SPEED - 22 F.P.M. TWO STEP INVERTER CONTROL
AUX. HOIST SPEED - 22 F.P.M. TWO STEP INVERTER CONTROL
TROLLEY SPEED - 75 F.P.M. TWO STEP INVERTER CONTROL
AUX. TROLLEY SPEED - 75 F.P.M. TWO STEP INVERTER CONTROL
BRIDGE SPEED - 120 F.P.M. TWO STEP INVERTER CONTROL
POWER SUPPLY - 460/3/60
CONTROL CIRCUIT - 110/1/60
CONTROL LOCATION - RADIO w/BACKUP PUSHBUTTON SUSPENDED HOIST.
ADDITIONAL DATA - INDOOR SERVICE. (6)-200 AMP. #310990 AND (1)-200 AMP. #399355 (GROUND) CONDUCTIX SAFE-LEC II COLLECTORS. BRIDGE ELECTRIFICATION FLAT CABLE FROM STEEL TRACK. STROBE LIGHT ACTIVATED WHEN CRANE IS POWERED ON. DUAL HOIST CONTROL WITH SELECTOR SWITCH. ENRANGE FLEX 8X RADIO.

IMPORTANT CHECK ALL DIMENSIONS VOLTAGE CAPACITY AND SPEEDS. RETURN ONE PRINT APPROVED WITH ALL BLANK DIMENSIONS FILLED IN. CERTIFIED for your P.O. W054366TR OUR ORDER C-37931 APPROVED BY _____ DATE _____	5908 W. 118th ST., WORTH, IL 60482 (708)385-7700 FAX:(708)385-6889	REV. NO.: 1 DATE: 12/6/11 BY: C.D.
	SCALE: 1/2"=1'-0" DATE: 11/23/11	DRAWN BY: A.B. DWG SIZE: D
	6 TON SG-TR-DM BRIDGE CRANE (3)-CRANES REQUIRED	
	CRANE SALES & SERVICE INTERSYSTEMS	

DRAWING NUMBER
3284-3286



IMPORTANT Upper limit is an emergency stop only and is not to be used as an automatic shut off during normal operation.

WEIGHTS
 CRANE WEIGHT (LESS HOIST) = 8,865#
 HOIST = 1,200#
 TRUCKS = 1,160#
 DRIVES = 160#
 DRIVE BEAM = 7,545#
 AUX. HOIST = 1,200#

MOTOR HORSEPOWERS
 TOTAL BRIDGE HP. = 2 @ .75
 HOIST HP. = 5.7
 TROLLEY HP. = .4
 DISCONNECT FUSED = 30 AMP
 AUX. HOIST HP. = 5.7
 AUX. TROLLEY HP. = .4

TYPE CRANE - SINGLE GIRDER, TOP RUNNING, DUAL MOTOR
MAIN HOIST - DETROIT CAT. NO.: DH6M30-22M75
AUXILIARY HOIST - DETROIT CAT. NO.: DH6M30-22M75
CAPACITY - 6 TON
BRIDGE GIRDER - W24x146#
BRIDGE WHEELS - 8" TREAD DIAMETER
RUNWAY SIZE - 30# A.S.C.E. RAIL ON W33x118# w/C15x33.9#
MAIN HOIST SPEED - 22 F.P.M. TWO STEP INVERTER CONTROL
AUX. HOIST SPEED - 22 F.P.M. TWO STEP INVERTER CONTROL
TROLLEY SPEED - 75 F.P.M. TWO STEP INVERTER CONTROL
AUX. TROLLEY SPEED - 75 F.P.M. TWO STEP INVERTER CONTROL
BRIDGE SPEED - 120 F.P.M. TWO STEP INVERTER CONTROL
POWER SUPPLY - 460/3/60
CONTROL CIRCUIT - 110/1/60
CONTROL LOCATION - RADIO w/BACKUP PUSHBUTTON SUSPENDED HOIST.
ADDITIONAL DATA - INDOOR SERVICE. (6)-200 AMP. #310990 AND (1)-200 AMP. #399355 (GROUND) CONDUCTIX SAFE-LEC II COLLECTORS. BRIDGE ELECTRIFICATION FLAT CABLE FROM STEEL TRACK. STROBE LIGHT ACTIVATED WHEN CRANE IS POWERED ON. DUAL HOIST CONTROL WITH SELECTOR SWITCH. ENRANGE FLEX 8X RADIO.

IMPORTANT CHECK ALL DIMENSIONS VOLTAGE CAPACITY AND SPEEDS. RETURN ONE PRINT APPROVED WITH ALL BLANK DIMENSIONS FILLED IN. CERTIFIED FOR YOUR P.O. W054366TR OUR ORDER C-37931 APPROVED BY _____ DATE _____	5908 W. 118th ST., WORTH, IL 60482 (708)385-7700 FAX:(708)385-6889
	SCALE: 1/2"=1'-0" DATE: 11/23/11
	6 TON SG-TR-DM BRIDGE CRANE (4)-CRANES REQUIRED
	CRANE SALES & SERVICE INTERSYSTEMS

REV. NO.: 1 DATE: 12/6/11 BY: C.D.

DRAWN BY: A.B.
 DWG SIZE: D

DRAWING NUMBER: 3287-3290