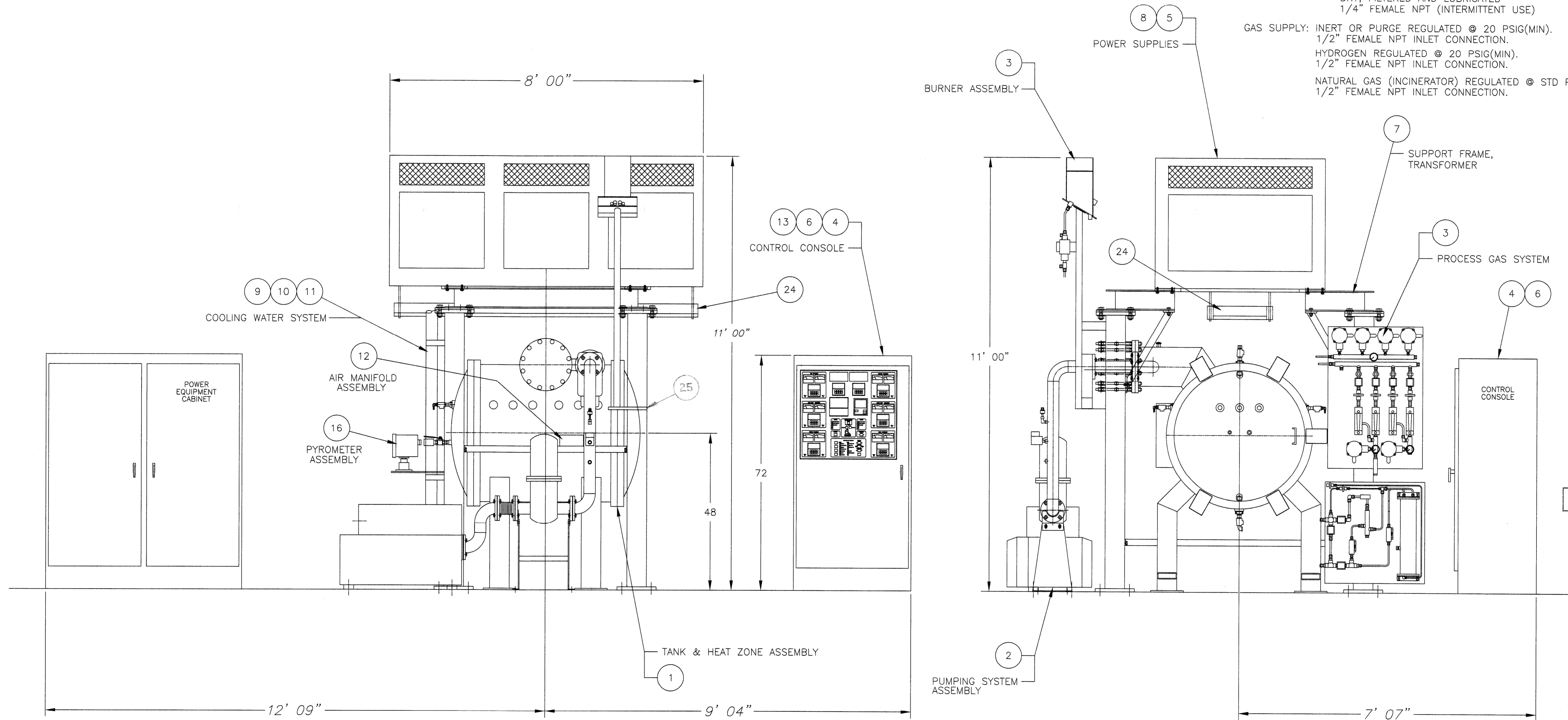


### UTILITY REQUIREMENTS

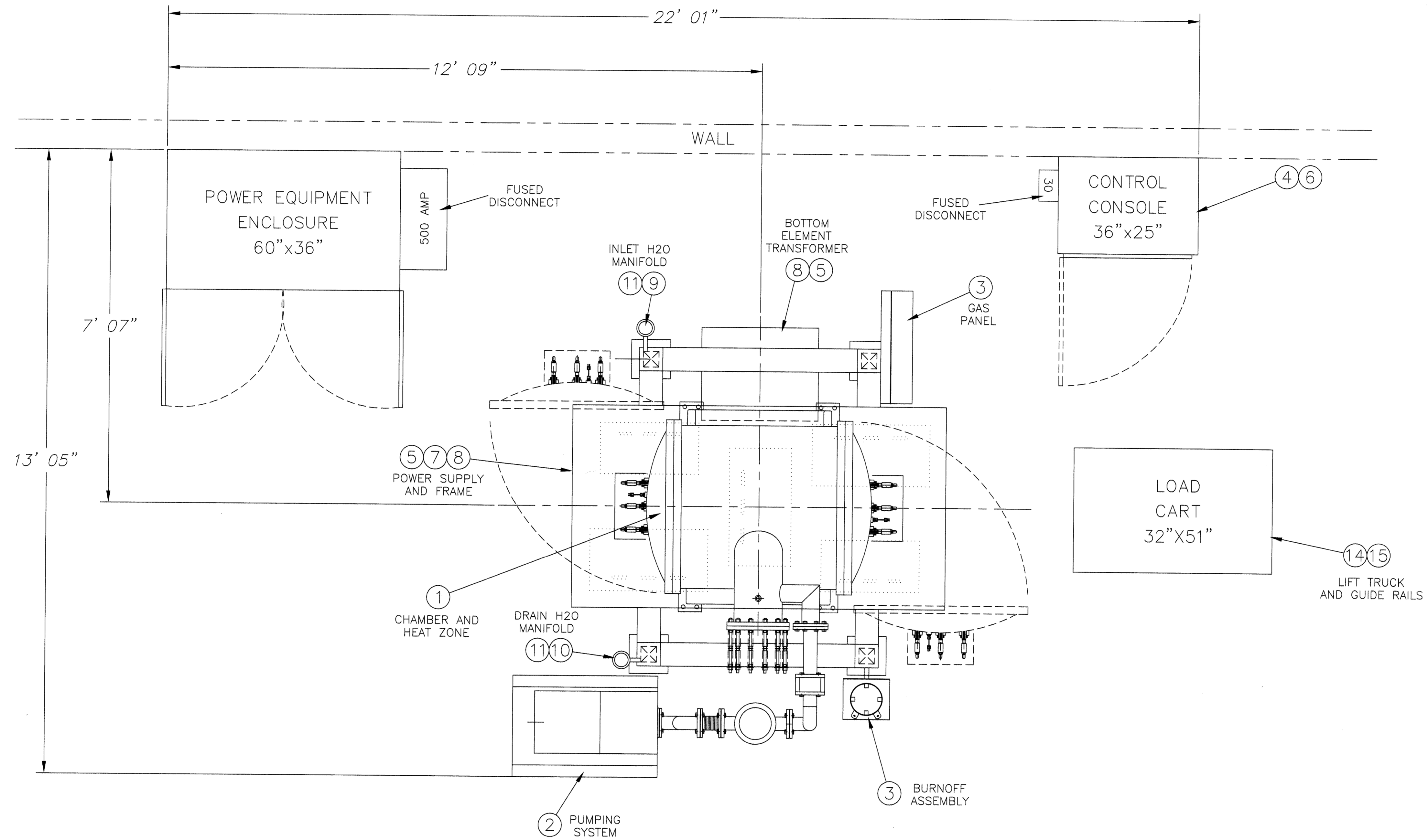
- ELECTRICAL: 480 VAC, 3 PHASE, 60 Hz, 330 kVA
- COOLING WATER: 80 GPM @ 70°F. MAXIMUM, BASED ON 30°F. RISE.  
75 PSIG(MAX), 35 PSIG(MIN-FLOWING).  
CLEAN AND FREE OF CONTAMINATION AND MINERALS.  
INLET CONNECTOR 2-1/2" FEMALE NPT.  
OUTLET CONNECTOR 3" FEMALE NPT.
- DE-IONIZED WATER: (H2 HUMIDIFIER) CAPACITY APPROX. 1.5 GALLONS.  
CONSUMPTION DEPENDENT UPON PROCESS CYCLE.
- COMPRESSED AIR: 75-100 PSIG (ALL EXCEPT AIR CLAMPS),  
140-150 PSIG (AIR CLAMPS),  
DRY, FILTERED AND LUBRICATED  
1/4" FEMALE NPT (INTERMITTENT USE)
- GAS SUPPLY: INERT OR PURGE REGULATED @ 20 PSIG(MIN).  
1/2" FEMALE NPT INLET CONNECTION.  
HYDROGEN REGULATED @ 20 PSIG(MIN).  
1/2" FEMALE NPT INLET CONNECTION.  
NATURAL GAS (INCINERATOR) REGULATED @ STD PSIG.  
1/2" FEMALE NPT INLET CONNECTION.



D CORRECTED DWG# FOR ITEM #12; ADDED ITEM #24, 25 5/97 JEC  
 C GENERAL UPDATE - INCLUDES ADDITION OF COVERS (ITEMS #17-23). 5/97 JEC  
 B GENERAL UPDATE - INCLUDES CONSOLE LOCATION, DIMS, & UTILITIES. 2/97 JEC  
 A GENERAL UPDATE - FLOOR PLAN REVISED. 2/97 JEC

<small>THIS IS A PROPRIETARY DESIGN OF THERMAL TECHNOLOGY INCORPORATED. REPRODUCTION, MANUFACTURE OR USE OF ANY ASSEMBLY, SUB-ASSEMBLY OR PART INDICATED HEREIN OR THE USE OF THE DESIGN OF ANY SUCH ASSEMBLY, SUB-ASSEMBLY OR PART IS PERMISSIBLE ONLY IF EXPRESSLY AUTHORIZED IN WRITING.</small>	
<b>TITLE</b> FURNACE ASSEMBLY & INSTALLATION	
<b>brew</b> <small>A Division of THERMAL TECHNOLOGY INC.                  90 Airport Road, Concord, New Hampshire 03301                  603-225-8605</small>	
REMOVE BURRS & SHARP EDGES Drawn: [Signature] Checked: [Signature] Appd: [Signature]	TOLERANCES UNLESS OTHERWISE SPECIFIED X ± .030 .XX ± .015 .XXX ± .005 FRACT. ± 1/16 FINISH 125 ANGULAR ± 0°30' L. .005 PER INCH T. .005 PER INCH O. .010 T.I.R.
SCALE 1/16" = 1" REF. 31-1030	DRAWING NUMBER 46261 REV. D
SYM REVISIONS DATE BY	SHEET 1 OF 2

MAKEFACE 031316



(SEE SHEET #1 FOR REVISIONS)

<small>THIS IS A PROPRIETARY DESIGN OF THE THERMAL TECHNOLOGY INCORPORATED. REPRODUCTION, MANUFACTURE OR USE OF ANY ASSEMBLY, SUB-ASSEMBLY OR PART INDICATED HEREIN OR THE USE OF THE DESIGN OF ANY SUCH ASSEMBLY, SUB-ASSEMBLY OR PART IS PERMISSIBLE ONLY IF EXPRESSLY AUTHORIZED IN WRITING.</small>	
<b>TITLE</b> ASSEMBLY AND INSTALLATION (PLAN VIEW)	
<b>brew</b> <small>A Division of THERMAL TECHNOLOGY INC.          90 Airport Road, Concord, New Hampshire 03301          603-225-6605</small>	
<b>REMOVE BURRS &amp; SHARP EDGES</b> Drawn [Signature] Checked [Signature] Appd. [Signature]	<b>TOLERANCES UNLESS OTHERWISE SPECIFIED</b> .X ± .030 / FINISH 125 .XX ± .015 ANGULAR ± 0°30' .XXX ± .005 .L .005 PER INCH FRACT. ± 1/16 // .005 PER INCH O .010 T.I.R.
<b>DRAWING NUMBER</b> 46261	<b>REV.</b> D
<b>SCALE</b> 1/4" = 1" <b>REF</b> 31-1830	<b>SHEET</b> 2 OF 2

SYM	REVISIONS	DATE	BY
-----	-----------	------	----

# THERMAL TECHNOLOGY INC

brew division

B/M No: -----

DWG No: 46261

1 of 1 REV: D

BY: JEC DATE: 12/96

31-1030		FURNACE ASSEMBLY & INSTALLATION				
ITEM	QTY	DESCRIPTION	MANUF.	PART NO.	MAT'L	DWG NO.
1	1	TANK AND HEAT ZONE ASSEMBLY	TTI			46243
2	1	PUMPING SYSTEM ASSEMBLY	TTI			46252
3	1	PROCESS GAS SYSTEM SCHEM/ASSY	TTI			36974
4	1	CONTROL CONSOLE ASSEMBLY	TTI			46264
5	1	POWER SUPPLY	TTI			36982
6	REF	ELECTRICAL SCHEMATIC	TTI			46262
7	1	TRANSFORMER SUPPORT FRAME ASSY	TTI			46263
8	1	POWER CABLE ARRANGEMENT	TTI			36983
9	1	WATER INLET MANIFOLD ASSEMBLY	TTI			36984
10	1	WATER DRAIN MANIFOLD ASSEMBLY	TTI			36986
11	REF	WATER SCHEMATIC	TTI			26218
12	1	AIR MANIFOLD ASSEMBLY	TTI			26346
13	1	NAME PLATE	TTI			11436
14	1	LIFT TRUCK MODIFICATION	TTI			46456
15	1	GUIDE RAIL ASSEMBLY	TTI			26219
16	1	PYROMETER ASSEMBLY	TTI			92162
17	5	RETAINER CLIP	TTI	(NOT SHOWN)		26334
18	1	TOP FRONT COVER	TTI	(NOT SHOWN)		37063
19	1	TOP REAR COVER	TTI	(NOT SHOWN)		37064
20	1	SIDE TRANSFORMER COVER	TTI	(NOT SHOWN)		37065
21	1	FRONT TRANSFORMER COVER	TTI	(NOT SHOWN)		37066
22	1	REAR TRANSFORMER COVER	TTI	(NOT SHOWN)		37067
23	1	TOP TRANSFORMER COVER	TTI	(NOT SHOWN)		37068
24	1	CABLE TRAY	ANY	20"W x 4"H x 93"L	ALUM.	
25	1	BURN-OFF TOWER BRACKET	TTI			17242