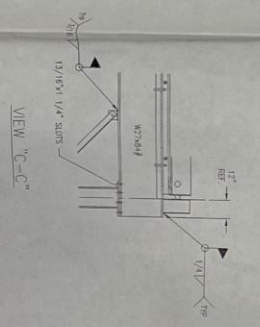
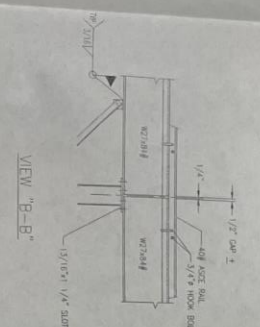
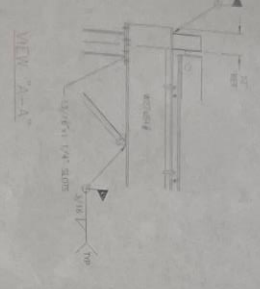
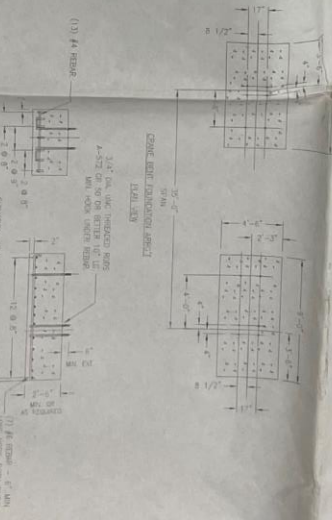


PLAN VIEW



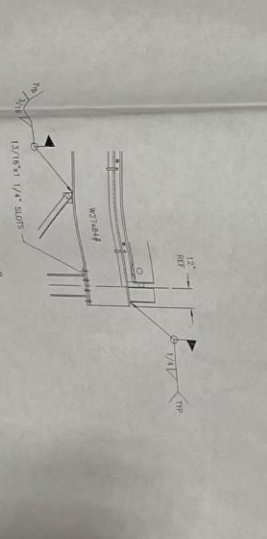
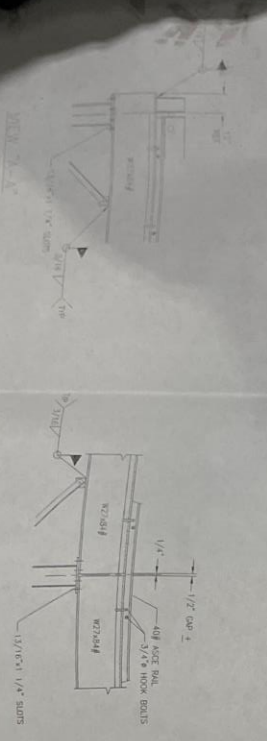
TIES & ANCHOR BOLTS BY SHOP-VAC

NOTE: REMOVE BEAMS & COLUMN BOLTS ONE (1) FOOT FROM CRANE PHASE BOTTOM & 6" OF COLUMN BOLTS TO BE PHASED IN BY SHOP-VEHICLE OWNER. CRANE PHASE PAINT

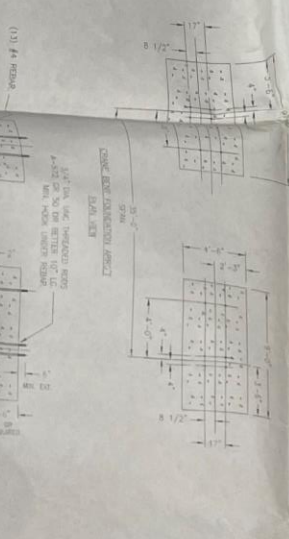
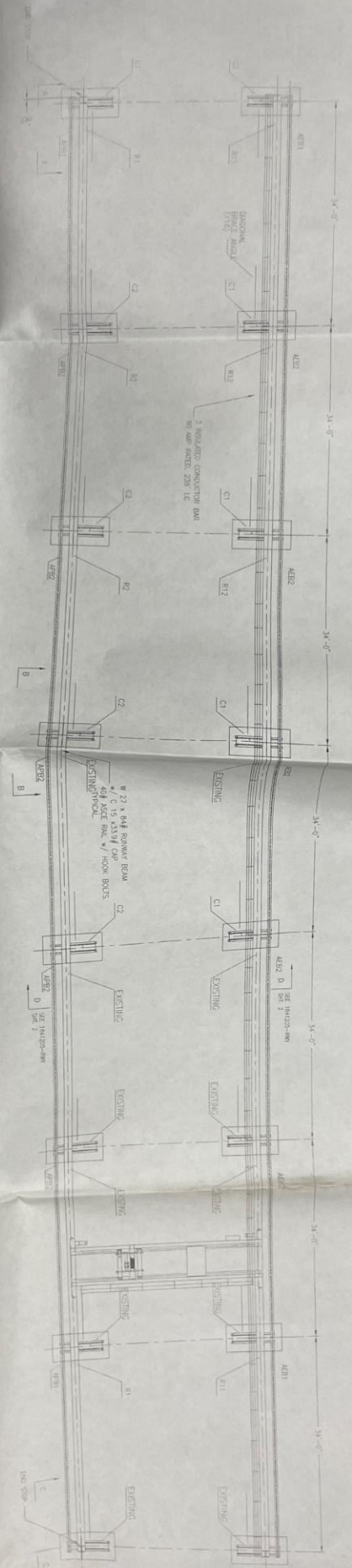


GENERAL NOTE: THE CONTRACTOR SHALL BE RESPONSIBLE FOR OBTAINING ALL NECESSARY PERMITS AND APPROVALS FROM ALL AFFECTED AGENCIES AND AUTHORITIES. THE CONTRACTOR SHALL BE RESPONSIBLE FOR OBTAINING ALL NECESSARY PERMITS AND APPROVALS FROM ALL AFFECTED AGENCIES AND AUTHORITIES. THE CONTRACTOR SHALL BE RESPONSIBLE FOR OBTAINING ALL NECESSARY PERMITS AND APPROVALS FROM ALL AFFECTED AGENCIES AND AUTHORITIES.

1841205  
 KONECRANES, INC.  
 1841205-RWY  
 SHEET 1 OF 2

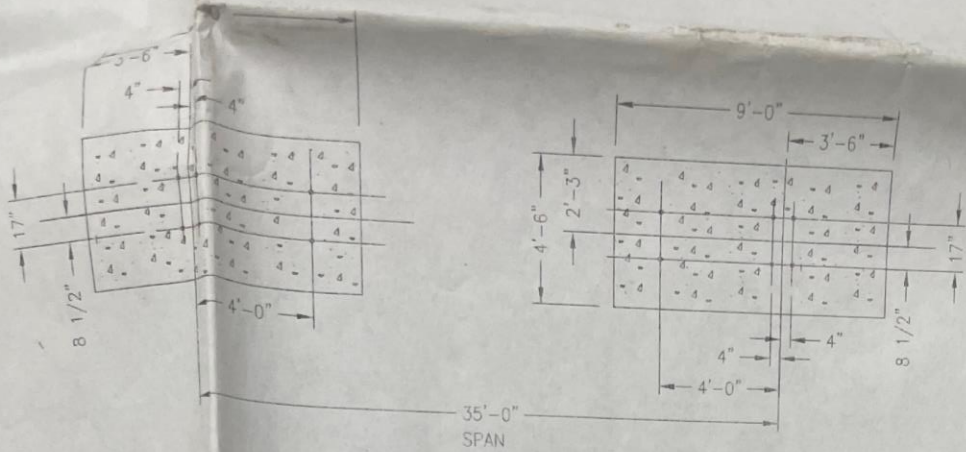


PLAN VIEW



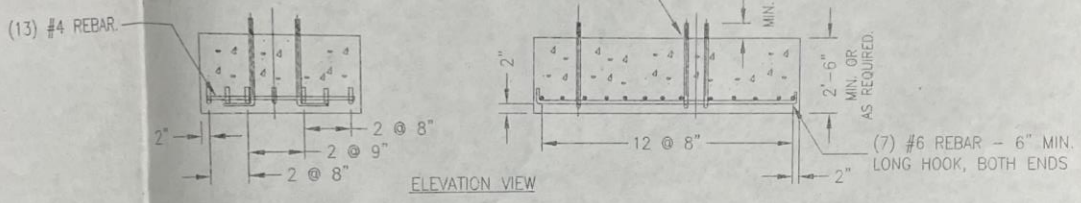
SIF TOP, USE HEAVY END BARS  
 4-#2 @ 4\"/>

1841701



CRANE BENT FOUNDATION ARRGT  
PLAN VIEW

3/4" DIA. UNC THREADED RODS  
A-572 GR 50 OR BETTER 10" LG.  
MIN. HOOK UNDER REBAR.



ELEVATION VIEW

FOOTINGS & ANCHOR BOLTS BY SHOP-VAC

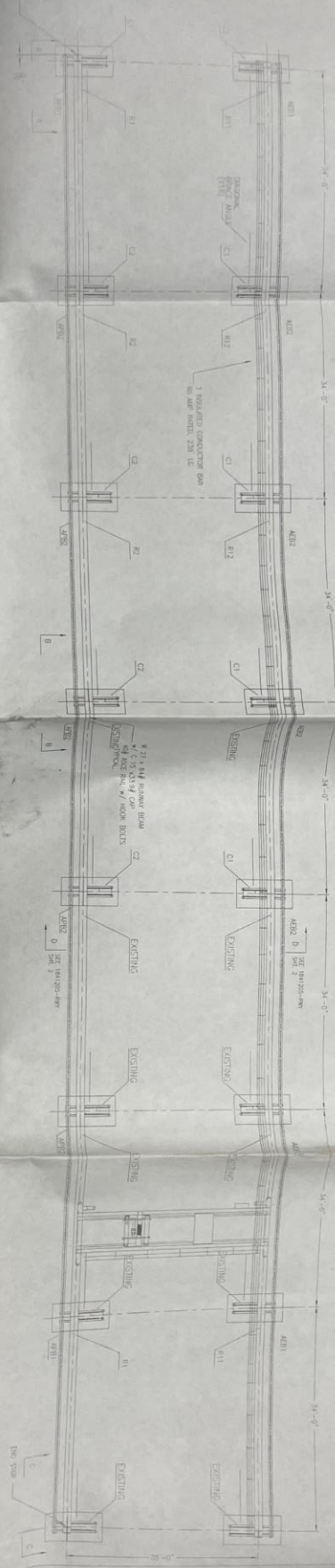
\* BOTTOM AND SIDES OF FOOTING TO BE IN DIRECT CONTACT WITH 2500 PSF MIN. SOIL BEARING PRESSURE

FINISH: RUNWAY BEAMS & COLUMN BENTS ONE (1) COAT GREY OXIDE PRIMER  
40 # ASCE RAIL NO PAINT  
BOTTOM 8' OF COLUMN BENTS TO BE PAINTED HI VIZ SAFETY YELLOW OVER  
GREY OXIDE PRIMER PAINT.

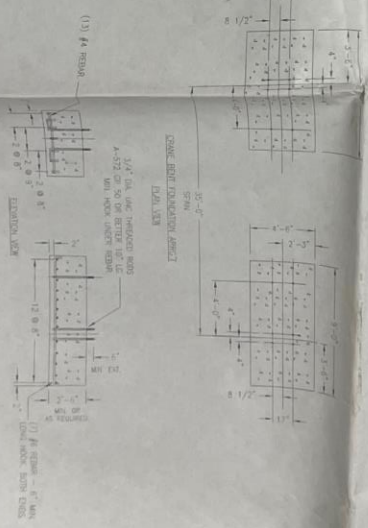
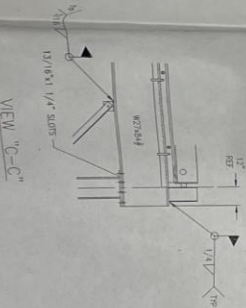
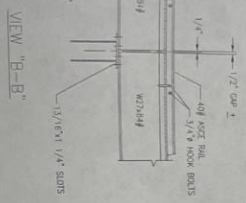
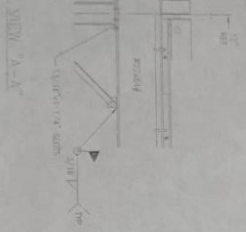
COPYRIGHT 2010 KONECRANES, INC.  
THIS DRAWING AND THE DATA SHOWN IS  
PROPRIETARY AND CONFIDENTIAL. DO NOT  
USE OR REPRODUCE FOR ANY PURPOSE  
WITHOUT THE WRITTEN CONSENT OF  
KONECRANES, INC.

KONECRANES, INC.

|                                |          |                    |  |              |
|--------------------------------|----------|--------------------|--|--------------|
| JOB NO.                        |          | APPROVALS          |  | DATE         |
| 1841205                        |          | DRAWN IC/RVA       |  | 05/21/10     |
|                                |          | CHECKED            |  |              |
| RUNWAY ARRANGEMENT             |          |                    |  |              |
| for: SHOP-VAC (BINGHAMTON, NY) |          |                    |  |              |
| SIZE                           | REV. NO. | DRAWING NO.        |  |              |
| D                              | 4        | 1841205-RWY        |  |              |
| SCALE 1/8"=12"                 |          | 1841205-RWY, sht 1 |  | SHEET 1 OF 2 |



PLAN VIEW



ANCHORS & ANCHOR BOLTS BY SHOP-VAC  
ANCHORS & BOLTS TO BE IN CONTACT WITH CONCRETE WITH 2000 PSI MIN. CURE BEHIND PRESSURE  
APPLY 50% OF TENSILE STRENGTH  
A-572 OR 50% OF TENSILE STRENGTH  
MIN. HOOP ANCHOR BOLTS  
1) 1/2" DIAMETER  
2) 1/2" DIAMETER  
3) 1/2" DIAMETER

ANCHOR BOLTS & COLUMN BOLTS USE (1) COAT GRYE GALV. FINISH  
REINFORCING & COLUMN BOLTS TO BE PAINTED IN 100% SAFETY YELLOW OVER  
GRYE COAT FINISH PAINT