

ASSETS FROM BANKRUPTCY LARGE DIE CASTING AND MACHINING FACILITY  
INCLUDING ALUMINUM DIE CASTERS TO 1,000 TON, DIE CAST SUPPORT, WHEELABRATOR  
BLAST MACHINES, HAAS CNC VMC'S, TOOLROOM, LIFT TRUCKS, SHOP AND SUPPORT EQUIPMENT

# PUBLIC AUCTION

**BidSpotter.com**  
See Instructions on Page 4  
To Become a Qualified Bidder on the Internet

Assets from Bankruptcy / Plant Closed



## ABECO DIE CASTING

1424 Higgs Road – Lewisburg, Tennessee 37091

**SALE DATE: THURSDAY, JANUARY 29TH, STARTING AT 9:00 AM**

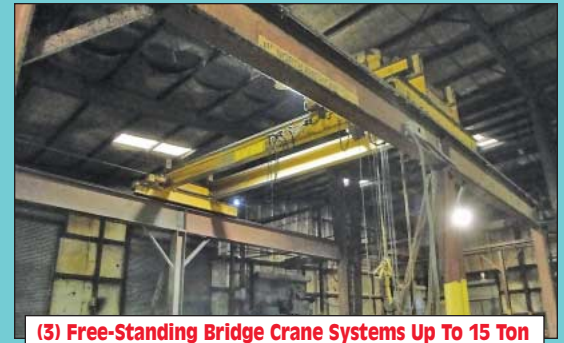
**INSPECTION: WEDNESDAY, JANUARY 28TH FROM 8:00 AM TO 4:00 PM**



(12) Aluminum Die Casting Machines by HPM, BT, Castmaster, Prince and Kux



(2) Haas Model VF-3 CNC VMC's (to 2003)



(3) Free-standing Bridge Crane Systems Up To 15 Ton



Goff Model 2460 Spinner  
Hanger Shot Blast Machine



(2) Wheelabrator Tumblast Machines



(5) Lift Trucks by Hyster & Toyota Up To 8,000 Lb



Sale Under The Management Of

**CINCINNATI INDUSTRIAL AUCTIONEERS**

auctioneers | appraisers | since 1961 | [cia-auction.com](http://cia-auction.com) | [info@cia-auction.com](mailto:info@cia-auction.com)  
2020 Dunlap St., Cincinnati, Ohio 45214 Phone 513-241-9701 Fax 513-241-6760





# THURSDAY, JANUARY 29TH



800 Ton Prince Cold Chamber Aluminum Die Cast Machine



600 Ton HPM Model II 600-600A Cold Chamber Aluminum Die Cast Machine



600 Ton HPM Model II 600-600A Cold Chamber Aluminum Die Cast Machine



1,000 Ton B&T / XLO Micromatic Cold Chamber Aluminum Die Cast Machine



1,000 Ton B&T / XLO Micromatic Cold Chamber Aluminum Die Cast Machine



700 Ton B&T / XLO Micromatic Cold Chamber Aluminum Die Cast Machine



500 Ton Castmaster Model C40A Cold Chamber Aluminum Die Cast Machine

## DIE CAST MACHINE

**1,000 Ton B&T / XLO Micromatic Cold Chamber Aluminum Die Cast Machine;** S/N DC 8015, 9" Tie Bar Diameter, 69"H x 73"V Fixed Platen Size, 69" x 69" Moveable Platen Size, 15" Platen Thickness, 44" X 44" Distance Between Tie Bars, 28" Stroke, Allen Bradley DTAM Micro PLC Controls, 100 HP Motor (DC1019), Rimrock Programmable Ladler, Shotbeds, Tip Lubricator **SEE PHOTO**

**1,000 Ton B&T / XLO Micromatic Cold Chamber Aluminum Die Cast Machine;** S/N DC 8013, 9" Tie Bar Diameter, 69"H x 73"V Fixed Platen Size, 69" x 69" Moveable Platen Size, 15" Platen Thickness, 44" X 44" Distance Between Tie Bars, 28" Stroke, Allen Bradley DTAM Micro PLC Controls, 100 HP Motor (DC1014) **SEE PHOTO**

**1,000 Ton Castmaster Model B-1000-A Cold Chamber Aluminum Die Cast Machine;** 8" Tie Bar Diameter, 70"V x 62"H Fixed Platen Size, 62" x 62" Moveable Platen Size, 13 1/2" Platen Thickness, 40" x 40" Distance Between Tie Bars, 38" Stroke, Allen Bradley BTAM Micro PLC Controls, 60 HP Motor (DC1013)

**900 Ton Castmaster Model D800 Cold Chamber Aluminum Die Cast Machine;** S/N 64-293, 8" Tie Bar Diameter, 68"V x 56"H Fixed Platen Size, 68"V x 56"H Moveable Platen Size, 12" Platen Thickness, 36"H X 48"V Distance

Between Tie Bars, 36" Stroke, Gold PLC Controls, 75 HP Clamp Motor, 30 HP Shot Motor (D1012)

**800 Ton Prince Cold Chamber Aluminum Die Cast Machine;** 7.5" Tie Bar Diameter, 70"V x 60"H Fixed Platen Size, 60" x 60" Moveable Platen Size, 12" Platen Thickness, 37.5" X 37.5" Distance Between Tie Bars, 29" Stroke, Allen Bradley DTAM Micro PLC Controls, 75 HP Motor (DC1001) **SEE PHOTO**

**750 Ton B&T Cold Chamber Aluminum Die Cast Machine;** 7" Tie Bar Diameter, 60"V x 57"H Fixed Platen Size, 57" x 57" Moveable Platen Size, 14.75" Platen Thickness, 35" X 35" Distance Between Tie Bars, 27" Stroke, Allen Bradley DTAM Micro PLC Controls, 75 HP Motor (DC1021)

**700 Ton B&T / XLO Micromatic Cold Chamber Aluminum Die Cast Machine;** S/N DC8105, 7" Tie Bar Diameter, 59"V x 54"H Fixed Platen Size, 54" x 54" Moveable Platen Size, 12 3/4" Platen Thickness, 33.5" x 33.5" Distance Between Tie Bars, 21" to 27" Stroke, adjustable, PLC Controls, 75 HP Motor **SEE PHOTO**

**650 Ton Quantam Cold Chamber Aluminum Die Cast Machine;** 6.5" Tie Bar Diameter, 57"V x 53"H Fixed Platen Size, 52" x 52" Moveable Platen Size, 12-1/2" Platen Thickness, 32" X 32" Distance Between Tie Bars, 27" Stroke, Allen Bradley PLC Controls, 60 HP Motor (DC1020)

**650 Ton Kux Model BH600 Cold Chamber Aluminum Die Cast Machine;** S/N 1051W-4, 6" Tie Bar Diameter, 61"V x 56"H Fixed Platen Size, 56" X 56" Moveable Platen Size, 10" Platen Thickness, 32" X 32" Distance Between Tie Bars, 19" Stroke, PLC Controls, 50 HP Motor (DC1008) **SEE PHOTO**

**600 Ton HPM Model II 600-600A Cold Chamber Aluminum Die Cast Machine;** S/N 92228, 6" Tie Bar Diameter, 48" x 54.5" Fixed Platen Size, 48" x 48" Moveable Platen Size, 10" Fixed Platen Thickness, 9" Moveable Platen Thickness, 29" x 29" Distance Between Tie Bars, 19" to 23" Stroke, adjustable, 4.75" Shot Cylinder Diameter, PLC Controls, Motor Missing (DC1009) **SEE PHOTO**

**600 Ton HPM Model II 600-600A Cold Chamber Aluminum Die Cast Machine;** S/N 86133, 6" Tie Bar Diameter, 48" x 54.5" Fixed Platen Size, 48" x 48" Moveable Platen Size, 10" Fixed Platen Thickness, 9" Moveable Platen Thickness, 29" x 29" Distance Between Tie Bars, 19" to 23" Stroke, adjustable, 4.75" Shot Cylinder Diameter, PLC Controls, 50 HP Motor **SEE PHOTO**

**500 Ton Castmaster Model C40A Cold Chamber Aluminum Die Cast Machine;** 5-1/2" Tie Bar Diameter, 40"V x 39"H Fixed Platen Size, 40"V x 39"H Moveable Platen Size, 7" Platen Thickness, 25"V X 23"H Distance Between Tie Bars, 19" Stroke, Allen Bradley PLC Controls, 50 HP Motor (DC1007) **SEE PHOTO**

## WEBCAST BIDDER INSTRUCTIONS

- > All Internet bidders must register for this auction at [www.bidspotter.com](http://www.bidspotter.com) at least 48-Hours Prior to the Sale Date, **if you do not you will not be approved.**
- > All Internet bidders must Post a Deposit of Approx. 25% of Your Planned Spending Budget or \$5,000.00 Minimum with Cincinnati Industrial Auctioneers in Order to be approved to Bid. Those who do Not Post the Deposit Will Not be Approved. **Period.**

**BidSpotter.com**



650 Ton Kux Model BH600 Cold Chamber Aluminum Die Cast Machine



(3) 100 Ton Frech Model DAK-100H Cold Chamber Die Casting Machine Cells with Furnaces and Related

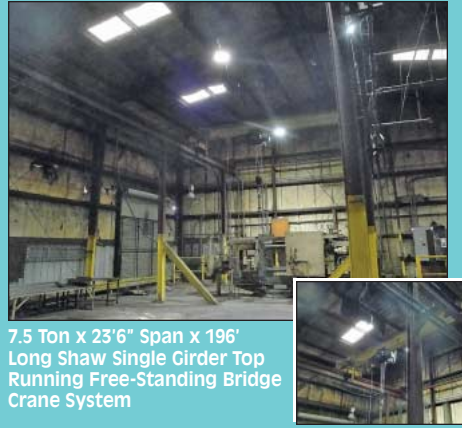




# ABECO DIE CASTING



15 Ton x 22' Span x 64' Long Approx. Detroit / American Top Running Double Girder Free-Standing Bridge Crane System



7.5 Ton x 23'6" Span x 196' Long Shaw Single Girder Top Running Free-Standing Bridge Crane System



20 Ton Four Post Hydraulic Trim Press



75 Ton Four Post Hydraulic Trim Press

## (3) 100 TON FRECH DIE CAST CELLS - SOLD VIA PHOTO

### (3) 100 Ton Frech Model DAK-100H Cold Chamber Die Casting Machine Cells with Furnaces and Related;

From Government Storage New, Never Used Condition, (3) Ludwig Harter Model MS0500-600 Melting Furnaces, Manufactured 1980, Automatic Ladle System, Automatic Weight Sensing Device, Spray Device, Heating / Cooling System, Control and Electric, Nitrogen Fill and Bleed, Gas Burners and Control Valve, Various Parts, Located in Spartanburg, South Carolina, to be sold via photo (New, Never Used) SEE PHOTO

## MELTING / HOLDING FURNACES

**2,800 LB Lindberg / MPH Model 62-ACMP-2800 Gas Fired Bath Type Furnace;** S/N 11914, BTU Input: 4,200,000, Max Temp: 1,500 Degree, 20,000 LB Bath Capacity, 10' Wide x 22' Long x 112" High, Side Disc Change (Out of Service) SEE PHOTO

**2,600 LB Approx. Mfg. Unknown Tilting Barrel Furnace;** 2,600 Lbs./Hr. Aluminum Continuous Melting Rate, 18,000 LB Bath Capacity, (2) Top Side Wall Burners, 91" Dia. Barrel, 14' Overall Length (Out of Service)

**2,000 LB Approx Gas Fired Bath Type Stationary Melting Furnace** (Out of Service)

**1,600 LB Warwick Model WBT-60 Tilting Barrel Furnace;** 1,600 Lbs./Hr. Aluminum Continuous Melting Rate, 7,900 LB Bath Capacity, (4) Top Slide Wall Burners, MPH Control Box, Bath Temp DRO, High Temp DRO, 19,051 Hours, 16' Overall Length, 72" Dia. Barrel SEE PHOTO

**(10) 2,000 to 3,000 LB Electric & Gas Fired Holding Furnaces** SEE PHOTO

## HYDRAULIC TRIM PRESSES

**75 Ton Four Post Hydraulic Trim Press;** 61" x 61" T-Slotted Bed & Ram,

50" x 50" Tie Bar Distance, 22" Stroke, 60" Daylight SEE PHOTO

**20 Ton Four Post Hydraulic Trim Press;** 35" x 51" Bed Size, 25" x 38" Tie Bar Distance, 18" Stroke, 36" Daylight

**20 Ton Four Post Hydraulic Trim Press;** 36" x 60" Bed Size, 25" x 47" Tie Bar Distance, 20" Stroke, 36" Daylight

**20 Ton Prince Four Post Hydraulic Trim Press;** S/N 78006, 44" x 66" Bed Size, 32" x 54" Tie Bar Distance, 24" Stroke, 40" Daylight SEE PHOTO

**20 Ton Core Steel Four Post Hydraulic Trim Press;** 46" x 54" T-Slotted Bed, 35" x 43" Tie Bar Distance, 18" Stroke, 36" Daylight SEE PHOTO

**20 Ton Greenlee Four Post Hydraulic Trim Press;** 28" x 47" Bed Size, 16" x 32" Tie Bar Distance, 16" Stroke, 32" Daylight SEE PHOTO

**20 Ton Four Post Hydraulic Trim Press;** 47" x 77" T-Slotted Bed & Ram, 24" Stroke, 48" Daylight SEE PHOTO

**15 Ton Four Post Hydraulic Trim Press;** 48" x 48" Bed Size, 37" x 37" Tie Bar Distance, 24" Stroke, 50" Daylight

**10 Ton Four Post Hydraulic Trim Press;** 42" x 42" Bed Size, 35" x 35" Tie Bar Distance, 24" Stroke, 40" Daylight

**10 Ton Prince Four Post Hydraulic Trim Press;** 30" x 40" Bed Size, 20" x 32" Tie Bar Distance, 12" Stroke, 30" Daylight SEE PHOTO

**10 Ton Four Post Hydraulic Trim Press;** 22" x 32" Bed Size, 16" x 29" Tie Bar Distance, 18" Stroke, 25" Daylight

**10 Ton C-Frame Hydraulic Trim Press;** 25" x 42" Bed Size

**5 Ton Four Post Hydraulic Trim Press;** 26" x 36" Bed Size, 18" x 29" Tie Bar Distance, 16" Stroke, 40" Daylight

**5 Ton Four Post Hydraulic Trim Press;** 26" x 36" Bed Size, 19" x 29" Tie Bar Distance, 20" Stroke, 28" Daylight

**5 Ton Four Post Hydraulic Trim Press;** 30" x 30" Bed Size, 20" x 20" Tie Bar Distance, 8" Stroke, 20" Daylight

## BRIDGE CRANES / JIB CRANES

**15 Ton x 22' Span x 64' Long Approx. Detroit / American Top Running Double Girder Free-Standing Bridge Crane System;** S/N N/A, 15 Ton American Top Running Cable Hoist w/ Pendant Control, (8) 13'6" Uprights, 19'6" Approx. Overall Height, 15'6" Approx. Under Hook & Under Bridge SEE PHOTO

**7.5 Ton x 23'6" Span x 196' Long Shaw Single Girder Top Running Free-Standing Bridge Crane System;** S/N N/A, 7-1/2 Ton Shaw Underhung Cable Hoist w/ Pendant Control, (18) 19'4" Uprights, 24' Approx. Overall Height, 18' Approx. Under Hook, 21' Approx. Under Bridge SEE PHOTO

**3 Ton x 12' Span x 51' Long Approx. Mfg. Unknown Single Girder Top Running Free-Standing Bridge Crane System;** 3 Ton Mfg. Unknown Under Hung Chain Hoist w/ Pendant Control, (6) 12' Uprights, 16'6" Approx. Overall Height, 10' Approx. Under Hook, 14' Approx. Under Bridge

**2 Ton 360 Degree Rotating Jib Crane w/ 2 Ton Yale Electric Hoist** SEE PHOTO

## LARGE SCRAP OPPORTUNITY

Electrics, Copper Wire, & Some Machinery to Be Sold for Scrap at Auction.

**NO HEAT - DRESS WARM**



20 Ton Greenlee Four Post Hydraulic Trim Press



10 Ton Prince Four Post Hydraulic Trim Press



20 Ton Prince Four Post Hydraulic Trim Press



20 Ton Core Steel Four Post Hydraulic Trim Press



(10) 2,000 to 3,000 LB Electric & Gas Fired Holding Furnaces



1,600 LB Warwick Model WBT-60 Tilting Barrel Furnace



2,800 LB Lindberg / MPH Model 62-ACMP-2800 Gas Fired Bath Type Furnace



3,000 LB Schaffer Gas Fired Holding Furnace





# THURSDAY, JANUARY 29TH



Goff Model 2460 Spinner Hanger Shot Blast Machine



36" Wide x 27" Diameter Wheelabrator Rubber Belt Tumblast Machine



Spectro Model Spectromax Stationary Metal "Spark" Analyzer



60" Diameter Roto Finish Model RT-20 Vibratory Finishing Machine

## SPINNING HANGER SHOT BLASTS

Goff Model 2460 Spinner Hanger Shot Blast Machine; S/N 96461-505132, (2) 10 HP Shot Wheels, (2) 24" x 60" Cast Iron Lined Chambers

SEE PHOTO

Wheelabrator Model WS210S Spinner Hanger Shot Blast Machine; S/N 300109, (2) 10 HP Shot Wheels, 36" Wide x 54" High x 60" Deep Chamber Size, (2) Spinner Hanger Fixtures, Overhead Conveyor System

SEE PHOTO

## TUMBLAST MACHINES

42" Wide x 30" Diameter Wheelabrator Steel Fight Tumble Blast Machine; S/N A120944, Steel Belt, Torit Four-Cartridge Dust Collector, Shot Recovery System, 20 HP Wheel Motor, Allen Bradley PLC Control

SEE PHOTO

36" Wide x 27" Diameter Wheelabrator Rubber Belt Tumblast Machine; S/N 74-050-SX40301, Rubber Belt, Wheelabrator Dust Collector System; S/N 40320, Shot Recovery System

SEE PHOTO

36" Wide x 30" Diameter Wheelabrator (Delta Line) Model 170

Rubber Belt Tumblast Machine; S/N 170176

Abrasive Basket Type Tumble Blast Cabinet; Model B1505, S/N 164, Basket Size: 34" Wide x 30" Diameter, 15 HP Shot Wheel

## VIBRATORY FINISHING / TUMBLE FINISHES

60" Diameter Roto Finish Model RT-20 Vibratory Finishing Machine; S/N RT20-83A, 28" Deep Bowl, Sound Enclosure Lid

SEE PHOTO

30" Diameter Sewco Vibratory Finishing Machine

(2) Rampe 34" & 20" Wide Tumbling Drums

## DUST COLLECTOR

Torit Model 2-DF4 Four-Cartridge Type Dust Collector; 428076-001

Donaldson Model 90 Cabinet Type Dust Collector; S/N 203571

## SPECTROMETER / CMM / X-RAY

Spectro Model Spectromax Stationary Metal "Spark" Analyzer; S/N 07M/0032, w/ H.P. PC System

SEE PHOTO

Bendix Cordax Model 1000 Coordinate Measuring Machine; S/N 2-2567-0978, 19" x 30" Table, Renishaw MIP Probe Head & Computer

Norelco Model MG300 X-Ray Machine; 12" Elevating / Rotating Table Fixture

## BALER / MATERIAL HANDLING / SHOP EQUIPMENT

30" X 60" Cram-A-Lot Vertical Hydraulic Baler

SEE PHOTO

10,000 LB Rice Lake Digital Platform Scale; Rice Lake IQ Plus 355 DRO, 59" x 71" Platform

60" Altek Rotary Pallet Stretch Wrapper w/ 48" Diameter Platform

4' Aluminum Brow Plate

(30) 44" x 54" x 32" Deep Ridgid Baskets

(30) Sections 4' x 12' x 14' High Heavy Duty Pallet Rack

(7) H.D. Die Racks

(24) Dump Hoppers from 1 to 3 Yards

(15) Plastic Collapsible Baskets



25 HP Quincy Model QSB25ANA31N Skid Mounted Rotary Screw Air Compressor



30" X 60" Cram-A-Lot Vertical Hydraulic Baler



Wheelabrator Model WS210S Spinner Hanger Shot Blast Machine



42" Wide x 30" Diameter Wheelabrator Steel Fight Tumble Blast Machine



2 Ton 360 Degree Rotating Jib Crane w/ 2 Ton Yale Electric Hoist





Haas Model VF-3B CNC Vertical Machining Center



Haas Model VF-3 CNC Vertical Machining Center



(2) 3 HP Kingston Model KMT-3V Variable Speed Vertical Mills

## CNC VERTICAL MACHINING CENTERS

Haas Model VF-3B CNC Vertical Machining Center; S/N 32319, Haas CNC Control, 20 HP / 2-Speed Gear Drive, 1000 IPM, 18" X 48" T-Slotted Table, #40 Taper Spindle, 20 HP, 24-Tool ATC (2003)

SEE PHOTO

Haas Model VF-3 CNC Vertical Machining Center; S/N 17644, Haas CNC Control, 18" X 48" T-Slotted Table, #40 Taper Spindle, 710 IMP, 20-Tool ATC (1999)

SEE PHOTO

8" Haas Model HRT210 4th Axis Rotary Indexer; S/N 217699

## VERTICAL MILLING MACHINES

5 HP Lagunmatic Model No. 310 CNC Vertical Mill; S/N 28609, Dynapath Delta 20 CNC Control, 10" x 44" Table, DRO (1990)

(2) 3 HP Kingston Model KMT-3V Variable Speed Vertical Mills; S/N's 6997 & 6996, 60 - 4200 RPM, 10" X 50" Tables, R-8 Spindle (S/N 6997 w/ PTF) SEE PHOTO

Maho Model MH-800 Vertical Mill; S/N 38682, 24-1/2" x 34" Table, 40 - 2000 RPM, .25 - 25.0 In/Min Feed Rate, 3-Axis Fagor DRO

No. 3 Cincinnati Dial Type Vertical Mill; S/N 2A3V1L-11, 15" x 62-1/2" Table

Milwaukee No. 2 Rotary Head Tool & Die Milling Machine; S/N 12783, 250 - 6000 RPM, 16" X 30" Table, Newall DP8 Two-Axis DRO

1 1/2 HP Comet Variable Speed Vertical Mill; S/N 910202, 10" x 50" Table

## LATHES

21" x 84" Mighty Turn Model ML-2180GL H.D. Geared Head Engine Lathe; S/N 09060809, 3-1/2" Spindle Hole, 9 - 1600 RPM, 12" 4-Jaw Chuck, Tailstock, Steady Rest

SEE PHOTO

18-1/2" x 36" Monarch Model 16" SW Lathe; S/N 19564, 10" 3-Jaw Chuck, 21 - 900 RPM, Tool Post, Tailstock

8" x 16" South Bend Cabinet Type Toolroom Lathe; S/N L044NCR, 5" 3-Jaw Chuck, Tailstock

20" Jones & Lamson Model No. 7A H.D. Turret Lathe; S/N N/A, Tool Post, 6-Position Turret, 30 - 1500 RPM

8" x 24" Hardinge Cabinet Type Cut-Off Lathe; 30 - 1500 RPM

## TOOLROOM / MISC. MACHINERY

4" Arm X 13" Column Webo Model 22 Radial Arm Drill; S/N E188, Complete w/ Drill Box Table

SEE PHOTO

6" X 18" Brown & Sharpe #5 Automatic Surface Grinder

6" X 12" Reid Hand Feed Surface Grinder

40" Enco Model 92260 Vertical Band Saw; S/N 1000109 w/ Welder

SEE PHOTO

18" Wide X 10" DoAll Model C-4 Horizontal Band Saw

20" Everett Abrasive Cut-Off Saw

500 Amp Lincoln & 300 Amp Miller Welders

Darex Drill Grinder

Shop Built Vertical Honing Machine; 8" Diameter x 42" Stroke

Wilton Pneumatic Tapping Machine w/ Stand

Machine Accessories & Perishable Tooling Consisting of; 12" Trolley Cross Slab Rotary Table, Mill Vises, Toolholders, Angle Plates, Milling Cutter, H.S. Drills, Grinding Accessories, Collets

## SINGLE / MULTI-SPINDLE DRILLS

(2) 26" Allen Five-Spindle Production Drills; 21" x 82" T-Slotted Table, Power Feed, 200 - 1400 RPM Spindle Speeds

SEE PHOTO

24" Allen Four-Spindle Production Drill; 21" x 67" T-Slotted Table

30" Allen Four-Spindle Production Drill; 25" x 54" Table

13" Powermatic Three-Spindle Production Drill; 14" x 65" Table

15" Rockwell Three-Spindle Production Drill; 18" x 54" Table

18" Allen Two-Spindle Production Tapper; 14" x 36" Table

21" Powermatic Floor Drill w/ 8-Spindle Commander Attachment; 18" x 16" Table

17" Hypneumatic Floor Tapper; 14" x 36" Table

15" Powermatic Model 1150 Floor Drill; S/N 91551031, 14" x 20" Table

## DISC / BELT SANDERS

(6) 2" Stephen Bader Table Top Belt Sanders

(2) 24" Baldor Disc Sanders

6" Belt / 12" Disc Delta Sander

## MANLIFT

Genie Model Z-45/22 LP Boom Type Manlift; S/N N/A, 45' Lift Height

SEE PHOTO

## LIFT TRUCKS

8,000 LB Hyster Model S80 XL LP

Gas Cushion Tire Lift Truck; S/N

D004002494T, 3-Stage Mast, 194" Lift Height, Side Shift 6780 Hours

SEE PHOTO

6,000 LB Toyota Model 7FGCU30 LP

Gas Cushion Tire Lift Truck; S/N

61393, Special Short Mast Truck at 58" to

80" Lift, Side Shift

SEE PHOTO

3,000 LB Toyota Model 6FGU15 LP

Gas Cushion Tire Lift Truck; S/N

63715, 3-Stage Mast, 237" Lift Height, 100" Mast Height, Side Shift

2,000 LB Clark Model TW25B

Electric Lift Truck; S/N TW125-338-

2955-FA, 24-Volt w/ Charger

## ELECTRICAL / BUSS DUCT / WIRING

(2) 50 KVA Transformers

(Lot) Electrical Wiring For Machines

(Lot) Approx. 200' Electric Bussway w/ Wiring

## AIR COMPRESSORS

125 HP Quincy Model Q490 Skid Mounted Twin Screw Air Compressor; S/N 940ANA330298

100 HP Sullair Model 25-100H Skid Mounted Twin Screw Air Compressor; S/N 41596 FGH, 125 PSIG

25 HP Quincy Model QSB25ANA31N Skid Mounted Rotary Screw Air Compressor; S/N 98099

SEE PHOTO

(2) 6.5 HP Delta Vertical Tank Air Compressors

Wilkerson Model A14-EM-P00 Refrigerated Air Dryer; S/N 05-31-91-

5953UM3690, 1,000 SCFM at 39 Degrees and 1,400 SCFM at 50 Degrees

Office Furniture Consisting of; Executive Desk Sets, Conference Room Furniture, Wood Desks, Credenzas, File Cabinets, Lobby Furniture & Related

SEE PHOTO

## OFFICE FURNITURE

Executive Desk Sets, Conference Room Furniture, Wood Desks, Credenzas, File Cabinets, Lobby Furniture & Related

SEE PHOTO



4" Arm X 13" Column Webo Model 22 Radial Arm Drill



40" Enco Model 92260 Vertical Band Saw



(2) 26" Allen Five-Spindle Production Drills



8,000 LB Hyster Model S80 XL LP Gas Cushion Tire Lift Truck



6,000 LB Toyota Model 7FGCU30 LP Gas Cushion Tire Lift Truck



Genie Model Z-45/22 LP Boom Type Manlift



21" x 84" Mighty Turn Model ML-2180GL H.D. Geared Head Engine Lathe

# PUBLIC AUCTION

ASSETS FROM BANKRUPTCY LARGE DIE CASTING AND MACHINING FACILITY  
INCLUDING ALUMINUM DIE CASTERS TO 1,000 TON, DIE CAST SUPPORT,  
WHEELABRATOR BLAST MACHINES, HAAS CNC VMC'S, TOOLROOM, LIFT TRUCKS,  
SHOP AND SUPPORT EQUIPMENT

Assets from Bankruptcy / Plant Closed

## ABECO DIE CASTING

1424 Higgs Road - Lewisburg, Tennessee 37091

**SALE DATE:**  
**Thursday, January 29th**  
**STARTING AT 9:00 AM**

**INSPECTION:**  
**Wednesday, January 28th**  
**8:00 AM to 4:00 PM**



Contact Information  
2020 Dunlap St.  
Cincinnati, Ohio 45214  
Phone 513-241-9701  
Fax 513-241-6760  
www.cia-auction.com



(12) Aluminum Die Cast Machines



(2) Haas Model VF-3 CNC VMC's  
(to 2003)



(4) Shot & Tumblast Machines



(5) Lift Trucks

**FIRST CLASS MAIL!**

PRE-SORT  
FIRST CLASS  
U.S. POSTAGE  
**PAID**  
CINCINNATI, OHIO  
PERMIT NO. 3593



### Important Mail

TO BE DIRECTED TO THE ATTENTION  
OF EXECUTIVE PERSONNEL

**THURSDAY, JANUARY 29TH**

# PUBLIC AUCTION

Assets from Bankruptcy / Plant Closed

## ABECO DIE CASTING

1424 Higgs Road  
Lewisburg, Tennessee 37091

### IMPORTANT NOTICE:

Although information has been obtained from sources deemed reliable, the auctioneer makes no warranty or guarantee, expressed or implied, as to the accuracy of the information herein contained. It is for this reason that buyers should avail themselves of the opportunity to make inspection prior to the sale. This brochure is intended to provide general information of the equipment being offered and is subject to errors, omissions, additions or deletions. Please check with the Auctioneer's Office for a final listing. Items offered may or may not necessarily be sold as described and/or photographed in this brochure.

MAIL BIDS ACCEPTED WITH A 25% DEPOSIT

### DIRECTIONS

From I-65 Approx. 50 Miles South of Nashville exit at Rt. 50 (exit #37), Proceed East on Rt. 50 Approx. 10 miles into Lewisburg. Continue East through the business area to Higgs Rd., Go Left on Higgs Rd & proceed Approx. 1 mile to sale site on left. Watch for auction parking and auction signs.

### AUCTIONEERS

Cincinnati Industrial Auctioneers, Inc.  
TN License No. 00002225

Jeffrey L. Luggen - TN License No. 00001758  
Joseph M. Luggen - TN License No. 000011379  
Ryan L. Luggen - Apprentice Auctioneer



### TERMS OF SALE

All equipment described herein will be sold "as is", "where is" to the highest bidder or bidders for cash in accordance with our regular terms and conditions of sale. Unless other satisfactory arrangements are made, a **25% deposit** in cash, certified or cashier's check payable to Cincinnati Industrial Auctioneers, Inc., is required on all purchases. Firm and personal checks accepted only if accompanied by a letter from your bank guaranteeing your funds. All sales are subject to state and/or local taxes unless a signed exemption form is presented at the time of purchase. **All balances are due at the conclusion of the sale.** No merchandise may be removed while the sale is in progress. **All bidders must comply with our Standard Terms of Sale**, copies of which will be available at the sale site or can be obtained from our website.

**15% ONSITE BUYER'S PREMIUM**  
**18% ONLINE BUYER'S PREMIUM**

Sale Under The Management Of



**CINCINNATI INDUSTRIAL AUCTIONEERS**  
auctioneers | appraisers | since 1961 | cia-auction.com | info@cia-auction.com  
2020 Dunlap St., Cincinnati, Ohio 45214 Phone 513-241-9701 Fax 513-241-6760