

# PUBLIC AUCTION

## COMPLETE STAMPING, TOOL, DIE FACILITY & INDUSTRIAL REAL ESTATE

**Featuring:** (8) 100 Ton to 600 Ton SSSC Presses by Bliss, Danly, Niagara & Warco, (5) 25 ton to 150 Ton OBI & Gap Frame Presses, C-Frame Hydraulic Presses, Servo Feeders, Uncoilers, Cradle Straighteners, Air Feeders, Complete Toolroom, Spot Welders, Air Compressors, Lift Trucks, Plant Support Equipment, Steel Coil Stock Inventory & Other Related Items

*Plant Closed*

## CARIUS TOOL CO., INC.

3762 Ridge Road – Cleveland (Brooklyn), Ohio 44144  
On the Southwest Side of Cleveland

**SALE DATE**  
**TUESDAY, APRIL 20TH**  
**STARTING AT 10:00 AM**

**INSPECTION: Monday, April 19th**  
**10:00 AM to 4:00 PM**



### Cincinnati Industrial Auctioneers Inc.

2020 DUNLAP ST., CINCINNATI, OHIO 45214  
PHONE (513) 241-9701 / FAX (513) 241-6760  
INTERNET: www.cia-auction.com



125 Ton Warco Model SC2-125-96-42  
Variable Speed SSSC Press



600 Ton Cleveland Model S1-600-42-48  
Variable Speed SSSC Press

FIRST CLASS MAIL!

PRE-SORT  
FIRST CLASS  
U.S. POSTAGE  
**PAID**  
CINCINNATI, OHIO  
PERMIT NO. 3593



### Important Mail

TO BE DIRECTED TO THE ATTENTION  
OF EXECUTIVE PERSONNEL

## PRIME INDUSTRIAL REAL ESTATE TO BE OFFERED AT PUBLIC AUCTION TUESDAY APRIL 20TH AT 11:00AM



**24,438 Approx. Sq. Ft. Brick Industrial Building on Approx. 1 Acre;** (2) Parcel No.'s 431-13-007 & 431-13-008, (2) 12' Wide X 14' High Drive-In Doors, Ceiling Heights to 18', Heavy 480-Volt Electrics

**Real Estate Terms of Sale:** 10% Buyers Premium, \$10,000.00 Down in Cash or Certified Funds sale day. A 10% Buyers Premium will be added to the high bid to determine contract price. High bidder will be required to sign a "Contract To Purchase" for the amount at the sale's conclusion. Owner will have 48 hours to accept, or reject high bid. If accepted the balance will be due at closing within 60 days of auction. If the bid is not accepted buyer's deposit will be refunded promptly. Seller will present buyer a General Warranty Deed at closing. Occupancy shall be given upon closing. Taxes will be prorated until closing. Property will sell on an "as is" basis. There shall be no warranty of any kind given with regards to the premises, other than title; all implied warranties shall be disclaimed. Announcements at the time of sale will take precedent over all information provided in advertisements. Call for complete terms and information package. *Subject to High Bid Confirmation by Owner, Subject to Prior Sale, Subject To Withdraw.*

**Jeffrey L. Luggen - Broker / Auctioneer**

## COMPLETE STAMPING, TOOL, DIE FACILITY & INDUSTRIAL REAL ESTATE

*Plant Closed*

## CARIUS TOOL CO., INC.

3762 Ridge Road – Cleveland (Brooklyn), Ohio 44144  
On the Southwest Side of Cleveland

**SALE DATE:**  
**Tuesday, April 20th – Starting at 10:00 AM**

**INSPECTION:**  
**Monday, April 19th from 10:00 AM to 4:00 PM**

**DIRECTIONS:** From I-480 Approx. 10 Miles Southwest of Downtown Cleveland, Exit at No. 15 Ridge Road. Proceed North on Ridge Road for Approx. 2-1/4 Miles to Sale Site on Left. Watch for Auction Arrows, Parking & Sale Entrance Signs

**IMPORTANT NOTICE:** Although information has been obtained from sources deemed reliable, the auctioneer makes no warranty or guarantee, expressed or implied, as to the accuracy of the information herein contained. It is for this reason that buyers should avail themselves of the opportunity to make inspection prior to the sale.

**TERMS OF SALE:** All equipment described herein will be sold "as is", "where is" to the highest bidder or bidders for cash in accordance with our regular terms and conditions of sale. Unless other satisfactory arrangements are made, a **25% deposit** in cash, certified or cashier's check payable to Cincinnati Industrial Auctioneers, Inc., **is required on all purchases.** Firm and personal checks accepted only if accompanied by a letter from your bank guaranteeing your funds. All sales are subject to state and/or local taxes unless a signed exemption form is presented at the time of purchase. **All balances are due at the conclusion of the sale.** No merchandise may be removed while the sale is in progress. **All bidders must comply with our Standard Terms of Sale,** copies of which will be available at the sale site or can be obtained from our website.

**MAIL IN BIDS:** Mail in bids will be accepted with a 25% deposit.

**A 12% BUYER'S PREMIUM IN EFFECT FOR THIS SALE.**

### Auctioneers

Cincinnati Industrial Auctioneers, Inc. - License No. 633-1983-10439  
Jeffrey L. Luggen - License No. 57-1983-33789  
Jerome A. Luggen - License No. 62-1983-33799  
Jeffrey M. Luggen - License No. 2010-000026  
Joseph M. Luggen - License No. 2010-000019  
Frank Rome - License No. 62-1995-66509  
John Rome - License No. 57-2000-84249





125 Ton Warco Model SC2-125-96-42 Variable Speed SSSC Press



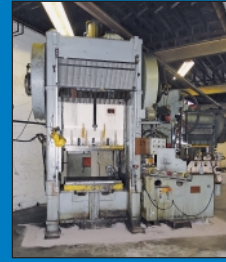
600 Ton Cleveland Model S1-600-42-48 Variable Speed SSSC Press



300 Ton Bliss Model S2-300-72-48 SSSC Press



100 Ton Danly Model S2-100-48-36 Variable Speed SSSC Press



200 Ton Niagara Model SC2-200-48-36 SSSC Press



105 Ton Verson Model 7.5F Flywheel Type OBI Press



12" Cooper Weymouth Model SMX-12 Servomax II Servo Feeder



\*\*12" Cooper Weymouth Model SMX-SF-12 Servomax SE Servo Feeder



18" Cooper Weymouth Model 18B Straightener



10,000 LB Automatic Feed Co. Model 881 Coil Cradle



20" Rowe Model 11020HDC8000J Cradle Straightener



25 HP Sullivan Palatek Horizontal Tank Air Cooled Rotary Screw Air Compressor

**STRAIGHT SIDE PRESSES & FEED LINES**

600 Ton Cleveland Model S1-600-42-48 Variable Speed SSSC Press; S/N P-1305, 15" Stroke, 35-1/2" Shut Height, 9" Adj., 25 - 50 SPM, 42" LR X 48" FB Bolster, 26" Windows, Palm Button Controls, Air Clutch, Link-Logic LBM-101 Brake Monitor, Defender 3 Error Locator  
SEE PHOTO

> 12" Dallas Model D400 Feeder Straightener; S/N 11258 SEE PHOTO

> 10,000 LB Automatic Feed Co. Model 881 Coil Cradle; S/N 1542072

300 Ton Bliss Model S2-300-72-48 SSSC Press; S/N CN2286, 12" Stroke, 34" Shut Height, 10" Adj., 30 SPM, 72" LR X 48" FB Bolster, 25" Windows, Palm Button Control, Air Cushion, Air Clutch, Link Lite Safety Controls, Ramco PLS/Die Protector, Scrap Shaker  
SEE PHOTO

> 18" American Feed Inc. Feeder Straightener

> 20" Rowe Model 11020HDC8000J Cradle Straightener; S/N 16140  
SEE PHOTO

300 Ton Bliss Model S2-300-60-36 SSSC Press; S/N H32337, 12" Stroke, 38" Shut Height, 10" Adj., 30 SPM, 60" LR X 36" FB Bolster, 25" Windows, Air Clutch, Palm Buttons, Defender 3 Die Protector

200 Ton Niagara Model SC2-200-48-36 SSSC Press; S/N 44795, 10" Stroke, 18" Shut Height, 10" Adj., 48" LR X 36" FB Bolster, 30 SPM, Air Clutch  
SEE PHOTO

> 12" Feed Lease Stock Feeder Straightener

> 6,000 LB Feed Lease Reverse Loop Stock Handler w/ Power Pinch Rolls

\*\* 125 Ton Warco Model SC2-125-96-42 Variable Speed SSSC Press; S/N 673529-10, 10" Stroke, 22" Shut Height, 17" Windows, 96" LR X 42" FB Bolster, Air Clutch, Kamco Die Protection, 40 - 60 SPM, Palm Buttons  
SEE PHOTO

> \*\*12" Cooper Weymouth Model SMX-SF-12 Servomax SE Servo Feeder; S/N C13713 SEE PHOTO

> 18" Cooper Weymouth Model 18B Straightener; S/N M-2417 SEE PHOTO

> 2,500 LB Feed Lease Uncoiler

2100 Ton Danly Model S2-100-48-36 Variable Speed SSSC Press; S/N 55098102, 4" Stroke, 24" Shut Height, 20 - 180 SPM, 48" LR X 36" FB Bolster, 15" Windows, Air Clutch, Defender 3 Die Protection, Palm Button Control  
SEE PHOTO

> 12" Cooper Weymouth Model SMX-12 Servomax II Servo Feeder; S/N 14057 SEE PHOTO

> 6" Air Feed Inc. Model PS225 Stock Straightener; S/N 881122

> 4,000 LB Feed Lease Single End Motorized Uncoiler

(2) 100 Ton Warco Model 100-2-72C SSSC Presses; S/N's 53203 & N/A, 10" Stroke, 22-1/4" Shut Height, 4" Adj., 35 SPM, 15" Windows, 72" LR X 36" FB Bolster, Link Logic Controls, Palm Buttons, Air Clutches

**OBI & GAP FRAME PRESSES**

150 Ton Warco Model 150-50-30 OBS Gap Frame Press; S/N H55P-160-2, 8" Stroke, 22" Shut Height, 4-1/2" Adj., 20 SPM, 50" LR X 30" FB Bolster, Palm Buttons, Cushion, Air Clutch

150 Ton Bliss OBI Press; S/N N/A, 6" Stroke, 19" Shut Height, 47" LR X 30" FB Bolster, 40 SPM, Palm Buttons, Air Clutch

105 Ton Verson Model 7.5F Flywheel Type OBI Press; S/N 18484, 8" Stroke, 18" Shut Height, 4" Adj., 39" LR X 30" FB Bolster, 35 SPM, Palm Button, Pull Back Safety Air Clutch  
SEE PHOTO

45 Ton Minster Type OBI No. 5 Back Geared OBI Press; S/N 5-14815, 5" Stroke, 10-3/4" Shut Height, 2-3/4" Adj., 28" LR X 18" FB Bolster, 90 SPM, Palm Buttons, Air Clutch

25 Ton Rousseau No. 25H Gap Frame Press; S/N P30632, 2" Stroke, 15-1/4" Shut Height, 20" Adj., 20" LR X 14" FB Bolster, 135 SPM, Palm Buttons, Air Clutch

**PARTS FINISHING**

24" Dia. X 32" Long Casalbi Co. Model 1100 Globe Tumbling Drum Dry Type Parts Deburring Machine; Variable Speed Drive Motor

36" Dia. X 60" Long Mfg. Unknown Tumbling Drum Wet Type Parts Deburring Machine; w/ 12" Wide Jorgensen Incline Steel Belt Feed Conveyor

**WELDING EQUIPMENT**

150 Amp Miller Model Econotig CC-AC/DC Tig Welder w/ Arc Starter

75 KVA National Electric Press Type Spot Welder; S/N X-3232, Entron Absolute Binary Count Controls, 24" Throat

75 KVA Federal Type PA-1-12 Press Type Spot Welder; S/N 57W993, Entron Control, 16" Throat

100 Amp Lincoln Torpedo Type Stick Welder

**MISC. MACHINERY**

(2) 6 Ton Denison Multipress Hydraulic Presses; S/N's 23601 & 22851, 12" Stroke, 7-1/2" & 6" Throats, 5 HP

16" DoAll Model Contour Vertical Band Saw; Blade Welder, 20" X 26" Table

30" Allen 5-Spindle Production Drill; 24" X 86" Table

20" Disc Sander; 15" X 27" Table

17" Liang Type LSD420 Single Spindle Floor Drill w/ Etco Multi-Spindle Tapping Head

10" X 18" Johnson Model J Horizontal Band Saw; S/N J10007

50 Ton Carolina Model CPB-1200 Hydraulic H-Frame Shop Press; S/N 13459

**TOOLROOM MACHINERY**

16" X 60" AFM Geared Head Engine Lathe; 22 - 1000 RPM, 12" 4-Jaw Chuck & 10" 3-Jaw Chuck, Tailstock, Face Plate  
SEE PHOTO

1 HP Bridgeport 8-Speed Vertical Mill; S/N 43278, 9" X 42" Table, PTF

3' Arm X 9" Column Cincinnati Bickford Radial Arm Drill; S/N 1R2380, 18" X 24" Drill Table

Sunnen Model MBB1290B Honing Machine; S/N 16350

6" X 12" Boyar Schultz Six Twelve Deluxe Surface Grinder

20" Cincinnati Heavy Duty Shaper

Machine Accessories Consisting of; 5C & R8 Collets, 5-C Spin Fixtures, (3) Machine Vises, Drill Chucks, Angle Plates, Toomaker Vises, Perishable Tooling, Parallels & Other Related Items

**LIFT TRUCKS & RELATED**

9,000 LB Caterpillar Model V90E LP Gas Solid Pneumatic Tire Lift Truck; S/N 77X2307, 3-Stage Mast, Side Shift, 60" Forks

6,000 LB Yale Model GC-060-LANFBS-083 LP Gas Cushion Tire Lift Truck; S/N P305370, 2-Stage Mast, 124" Lift Height

5,000 LB Clark Model GCX25 LP Gas Cushion Tire Lift Truck; S/N 7158K0F, 2-Stage Mast

4,500 LB Mitsubishi Model FGC25K1 LP Gas Solid Tire Lift Truck; S/N N/A, 188" 3-Stage Mast, 5,650 Hrs. (New 2004)

4,000 LB Clark Model EC-500-40F Electric Lift Truck; S/N E355-185-3907FA, Side Shift, 3-Stage Mast, 188" Lift Height, 48-Volt w/ Charger

3,000 LB Clark Model EC-500-50F Electric Lift Truck; S/N 3906FA, 4-Stage Mast, 240" Lift Height

JLG Model 1932E Self Traveling Electric Scissor Lift; S/N N/A, 750 LB Cap., 500 LB Cap w/ Deck Extension, 19' Max Platform Height, 110-Volt Built in charger

**AIR COMPRESSORS & RELATED**

25 HP Sullivan Palatek Horizontal Tank Air Cooled Rotary Screw Air Compressor; S/N 48966, 200 PSIG  
SEE PHOTO

25 HP Sullivan Palatek Skid Mount Rotary Screw Air Compressor; S/N W027111  
SEE PHOTO

25 HP Worthington Model 25RS100B Skid Mount Air Compressor; S/N FN1602

5 HP Ingersoll Rand Model 3T Two-Stage Vertical Tank Air Compressor

(2) 100 Gallon Air Receiving Tanks

**STEEL TUBS**

(50) 32" X 36" X 16" Deep Steel Corrugated Tubs w/ End Gates

(50) 24" X 48" X 20" Deep Steel / Wire Sided Containers

(50) 32" X 36" X 16" Deep Solid Steel Corrugated Tubs

(50) Various Size Wire Baskets & Other Steel Tubs

**INSPECTION EQUIPMENT**

Brown & Sharpe Model Microval Coordinate Measuring Machine; S/N 019342, 18" X 24" Granite Table w/ 15" X 19" Drilled & Tapped Sub-Plate, 17" Under Bridge, Renshaw Probe, Brown & Sharpe Micromeasure III V3.4 Software  
SEE PHOTO

Large Quantity of Assorted Inspection Items Including; Togohiseiki Hardness Tester, 18" Mitutoyo Digital Height Gauge, 12" Mitutoyo Dial Type Height Gauge, 24" X 36" & 18" X 24" Granite Surface Plates w/ Stands, Various O.D. Micrometers, Dial Indicators, Angle Plates, Pin Gauge Indexes, Height Gauges, Veneer Calipers, Force Gauges, & Many Other Related Items

**SHOP EQUIPMENT**

Shop Equipment Consisting of; (2) 2,000 LB Econolift Gaylord Tippers, 5,000 LB Weigh-Tronix Platform Scale, (3) 50 LB Weigh-Tronix Bench Type Digital Counting Scales, (5) 42" Dia. Floor Fans, Hydraulic Pallet Truck, (7) Sections 36" X 96" Pallet Rack, (2) 36" Wide H.D. Die Racks, (8) Self Dumping Hoppers, Steel Benches, Tables, Carts, Steel Shelving & Many Other Related Items

**OFFICE EQUIPMENT**

Office Equipment Consisting of; HP 4000 Laser Printer, H.P. Laserjet III Printer, (4) Dell & (1) Compaq Desk Type P.C. Systems, Cannon PC850 Photo Copier, Xerox 2510 Blue Print Copier, Lateral Files, Letter & Legal Files, D.P. Desks, Chairs, Tables, Storage Cabinets, & Other Related Items

**IMPORTANT AUCTION NOTICES**

\*\*Items marked with a \*\* are owned by Leasing Companies and will be offered subject to high bid confirmation. The Leasing Company will have 24 hours to accept or reject the high bid\*\*

**HUGE POSSIBLE SCRAP OPPORTUNITY**

Some of this Machinery Maybe Sold for Salvage at the Auction

**THIS WILL BE AN ONSITE ONLY AUCTION**

Proxy Bids will be Accepted with Proper Deposit



Partial View (3 of 6) Lift Trucks To 9,000 Lb. Capacity

NEW AS 2004



Partial View Corrugated Steel Tubs



16" X 60" AFM Geared Head Engine Lathe



Brown & Sharpe Model Microval Coordinate Measuring Machine



25 HP Sullivan Palatek Skid Mount Rotary Screw Air Compressor