

PUBLIC AUCTION

Steel Coil Logistic Company Featuring 100 Ton American Crawler Crane,
(4) Taylor Lift Trucks to 52,000 LB, Trackmobile, Loader,
Lifting Equipment, Containers, Compactors and Support Equipment

Property Sold, Must Vacate

CHEROKEE MARINE TERMINAL

520 Cowan Street – Nashville, Tennessee 37207

SALE DATE
TUESDAY, FEBRUARY 11TH
STARTING: 12:00 PM (Noon) Central

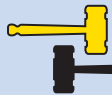
INSPECTION: Day Prior from 10:00 AM to 3:00 PM Central



CINCINNATI
INDUSTRIAL AUCTIONEERS

Contact Information
2020 Dunlap St.
Cincinnati, Ohio 45214
Phone 513-241-9701
Fax 513-241-6760

auctioneers | appraisers | since 1961 www.cia-auction.com



MYRON BOWLING
AUCTIONEERS, INC.

myronbowling.com • Phone 513-738-3311



100 Ton American Crawler Crane and (2) 52,000 LB Taylor Lift Trucks

FIRST CLASS MAIL!

PRE-SORT
FIRST CLASS
U.S. POSTAGE
PAID
CINCINNATI, OHIO
PERMIT NO. 3593



Important Mail

TO BE DIRECTED TO THE ATTENTION
OF EXECUTIVE PERSONNEL

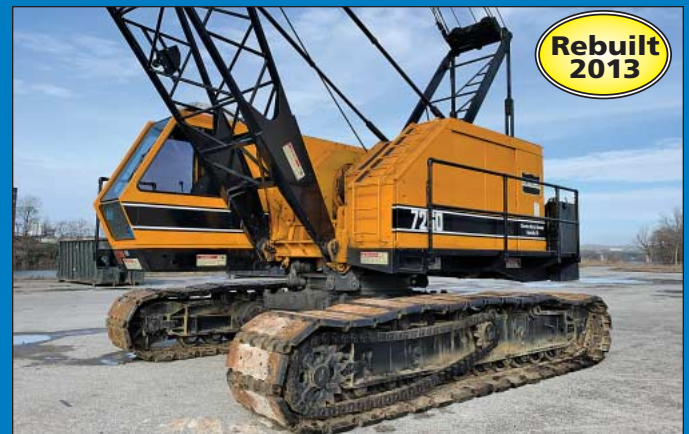
Property Sold, Must Vacate

CHEROKEE MARINE TERMINAL

520 Cowan Street – Nashville, Tennessee 37207

SALE DATE:
Tuesday, February 11th
Starting 12:00 PM (Noon) Central

INSPECTION:
Day Prior from 10:00 AM to 3:00 PM Central



100 Ton American Model 7260 Lattice Boom Crawler Crane



52,000 Lb. Taylor Model TE-520M Pneumatic Tire Diesel Powered Lift Truck

DIRECTIONS: From downtown Nashville, head east on Jefferson Street across the Cumberland River. Turn Left on Cowan Street. Sale Sight is on the Left after Topgolf.

IMPORTANT NOTICE: Although information has been obtained from sources deemed reliable, the auctioneer makes no warranty or guarantee, expressed or implied, as to the accuracy of the information herein contained. It is for this reason that buyers should avail themselves of the opportunity to make inspection prior to the sale.

TERMS OF SALE: All equipment described herein will be sold "as is", "where is" to the highest bidder or bidders for cash in accordance with our regular terms and conditions of sale. Unless other satisfactory arrangements are made, a **25% deposit** in cash, certified or cashier's check payable to Cincinnati Industrial Auctioneers, Inc., **is required on all purchases.** Firm and personal checks accepted only if accompanied by a letter from your bank guaranteeing your funds. All sales are subject to state and/or local taxes unless a signed exemption form is presented at the time of purchase. **All balances are due at the conclusion of the sale.** No merchandise may be removed while the sale is in progress. **All bidders must comply with our Standard Terms of Sale,** copies of which will be available at the sale site or can be obtained from our website.

MAIL IN BIDS: Mail in bids will be accepted with a 25% deposit.

18% ON-LINE BUYERS PREMIUM

Auctioneers

Cincinnati Industrial Auctioneers, Inc. – License No. 00002225

Jeffrey L. Luggen – License No. 00001758

Joseph M. Luggen – License No. 00006492



\$700K Rebuild 2013

100 Ton American Model 7260 Lattice Boom Crawler Crane



John Deere Model 644G Wheel Loader



**30,000 Lb. Taylor Model T-300M Diesel Power Cushion Tire Lift Truck



52,000 Lb. Taylor Model TY-520M Pneumatic Tire Diesel Powered Lift Truck



Whiting Model DT 15.6 Trackmobile

CRAWLER CRANE

100 Ton American Model 7260 Lattice Boom Crawler Crane; S/N 9509AC3668, Original MFG. Date 1995, Over \$700K Invested on Complete Rebuild by Patient Heavy Equipment in 2013

• See Website for Complete Specifications

TAYLOR LIFT TRUCKS

52,000 Lb. Taylor Model TY-520M Pneumatic Tire Diesel Powered Lift Truck; S/N S-W5-22911 (1994) 3,567 HRS, 2-Stage Mast, 137" Lift Height, Tilt, Side Shift, Left and Right Fork Positioning

• See Website for Complete Specifications

52,000 Lb. Taylor Model TY-520M Pneumatic Tire Diesel Powered Lift Truck; S/N S-G0-17262 (1984) 4,348 HRS, 2-Stage Mast, 132" Lift Height, Tilt, Side Shift, Left and Right Fork Positioning

• See Website for Complete Specifications

****35,000 Lb. Taylor Model TH350L Pneumatic Tire Diesel Lift Truck;** S/N S-BH-33099, Est Dimensions: 192"

Long X 102" Wide X 156" High. Est. Weight: 55,000 Lbs. (New 2006)**Located in Clover, SC**

****30,000 Lb. Taylor Model T-300M Diesel Power Cushion Tire Lift Truck;** S/N S-BF-32472, 180" Lift Height, Cummins B5.9-C, 5.9 Liter, C-160 Diesel Engine, Taylor TC-32 Transmission, Cab Enclosure w/ Heater, A/C & Defroster, Power Steering, Fork Positioner, 9' Forks, 15' Mast Lift Height, 12' Mast Carriage Width, Weight: 46,700 Lb., 10,370 Hours (New 2005)**Located in Cincinnati, Ohio**

****18,000 Lb. Clark Yardlift Model CFY150B Pneumatic Tire Gas Lift Truck;** S/N 191-481-463, 2-Stage Mast, 134" Mast Height**Located in Shelbyville, TN**

****3(3) 14,000 Lb. Linde Model H70D Pneumatic Tire Diesel Lift Trucks;** 191" Lift, s/n H2X396C01197 Has Approx. 13,600 Hrs., s/n H2X396C01210 Has Approx. 9,100 Hrs., s/n H2X396C01247 Has Approx. 17,000 Hrs. **Located in Clover, SC**

PICKUP TRUCK

2014 Chevrolet Silverado 1500 Pickup Truck; VIN # 1GCRCPH1E2239274, 6-Cylinder 4.3L Engine 67,252 Miles

WHEEL LOADER

John Deere Model 644G Wheel Loader; S/N DW644GB542375, 240 Hours Showing, JD 6076ASW30 Engine, S/N RG6076A516357, 110" Wide - 325 YD Bucket

TRACKMOBILE

Whiting Model DT 15.6 Trackmobile; S/N 3527525, Gas Powered, 6 Cylinder Hercules Engine, 2,877 Hours Showing

LIFTING ATTACHMENTS, C-HOOKS & RELATED

20 Ton Caldwell Model 22-12-20 Spreader Beam; s/n 18-95222 (New 2018)

2, 3 & 4-Prong Coil Lifters up to 15 Ton (New as 2019)

**Misc. Man Baskets
Mack 5-Point Grapple Claw**

Clam Bucket

60 Ton CM Cady C-Hook (2) Bradley Manual Swing Grabs up to 30 Ton

SHACKLES, CABLES, RATCHETS & RELATED

(50+) Shackles by Crosby & Skookum from 13.5 Ton up to 150 Ton

(25+) Lifting Cables up to 20'

(12) Barge Ratchets

Large Quantity of Lifting Straps

COMPACTORS, CONTAINERS, & HOPPERS

30 YD Marathon RJ-100-SC-30YD Self Contained Compacting Container (New 2009)

Marathon RJ-150-02 Compactor (5) Various Containers up to 42 YD

SUPPORT EQUIPMENT

175KW Cummins Model 500FDC5039AA Standby Power Emergency Duty Generator Set; s/n BD-96814-172-1

Diesel Fuel Tanks

Motors, Fans, Dollies, Air Compressor, Double End Grinders, Flammable Cabinets, Banding Carts, Welders, Other Shop Supplies

WEBCAST BIDDER INSTRUCTIONS

- All internet bidders must register for this auction at www.bidspotter.com, at least 48-Hours Prior to the Sale Date, **if you do not you will not be approved.**
- All internet bidders must Post a Deposit of Approx. 25% of Your Planned Spending Budget or \$5,000.00 Minimum with Cincinnati Industrial Auctioneers in Order to be approved to Bid. Those who do Not Post the Deposit Will Not be Approved. **Period.**

