

# PUBLIC AUCTION

Featuring: (19) Acme Gridley Auto Bar Machines Most Equipped w/ Threading & Other Attachments (New AS 1991), Large Quantity Acme Tooling, (5) New Britain Gridley Bar Machines, (15) Brown & Sharpe Screw Machines, 30 HP Ingersoll Rand Air Compressor & Dryer (New 2006), Complete Reclament Chip Recovery System, Lathe, Mill, Grinders, Saws, Snow Tapper, Drills, Misc. Machinery, Lift Trucks, Shop & Office Equipment

Owner Retiring / Plant Closed

## DANCO, INC.

6215 Bartmer Drive  
St. Louis, Missouri 63130

**SALE DATE**  
**THURSDAY, MARCH 4TH**  
**STARTING: 9:00 AM**

INSPECTION: Wednesday, March 3rd  
from 10:00 AM to 4:00 PM



### Cincinnati Industrial Auctioneers Inc.

2020 DUNLAP ST., CINCINNATI, OHIO 45214  
PHONE (513) 241-9701 / FAX (513) 241-6760  
INTERNET: www.cia-auction.com



Most Newer  
Than 1970

Most Equipped  
w/ Various  
Attachments

(11) 1-1/4" Acme Gridley Model RA-6 Six Spindle Automatic Bar Machines

FIRST CLASS MAIL!

PRE-SORT  
FIRST CLASS  
U.S. POSTAGE  
**PAID**  
CINCINNATI, OHIO  
PERMIT NO. 3593



### Important Mail

TO BE DIRECTED TO THE ATTENTION  
OF EXECUTIVE PERSONNEL

## COMPLETE ACME GRIDLEY AUTOMATIC MACHINING FACILITY

Owner Retiring / Plant Closed

## DANCO, INC.

6215 Bartmer Drive – St. Louis, Missouri 63130

**SALE DATE:**  
**Thursday, March 4th**  
**Starting at 9:00 AM**

**INSPECTION:**  
**Wednesday, March 3rd**  
**from 10:00 AM to 4:00 PM**



Reclament Oil Recovery System Chip Processing System

**DIRECTIONS:** From I-170 Just South of the I-70 Junction. Proceed South on I-170 to Exit #5 (MO-180E). Turn East onto MO-180E / St. Charles Rock Road & Proceed 3.5 Miles to Kienlen Avenue. Turn Right onto Kienlen Ave. Kienlen Ave. becomes Skinker Pkwy. & Proceed .8 Miles to Bartmer Avenue. Turn Right onto Bartmer Avenue & Continue .1 Mile to Sale Site on Right.

**IMPORTANT NOTICE:** Although information has been obtained from sources deemed reliable, the auctioneer makes no warranty or guarantee, expressed or implied, as to the accuracy of the information herein contained. It is for this reason that buyers should avail themselves of the opportunity to make inspection prior to the sale.

**TERMS OF SALE:** All equipment described herein will be sold "as is", "where is" to the highest bidder or bidders for cash in accordance with our regular terms and conditions of sale. Unless other satisfactory arrangements are made, a **25% deposit** in cash, certified or cashier's check payable to Cincinnati Industrial Auctioneers, Inc., **is required on all purchases.** Firm and personal checks accepted only if accompanied by a letter from your bank guaranteeing your funds. All sales are subject to state and/or local taxes unless a signed exemption form is presented at the time of purchase. **All balances are due at the conclusion of the sale.** No merchandise may be removed while the sale is in progress. **All bidders must comply with our Standard Terms of Sale**, copies of which will be available at the sale site or can be obtained from our website.

**MAIL IN BIDS:** Mail in bids will be accepted with a 25% deposit.

**A 12% BUYER'S PREMIUM IN EFFECT FOR THIS SALE.**

### Auctioneers

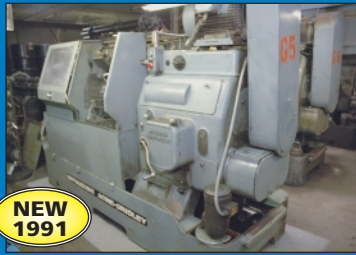
Jeffrey L. Luggen  
Jeffrey M. Luggen

Joseph M. Luggen  
John F. Rome



NEW  
2006

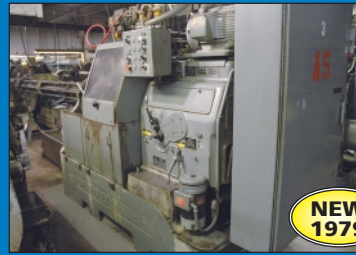
30HP Ingersoll Rand Model SSR-UP6-150 Air Compressor w/ Air Dryer



(2) 1-1/4" Mitsubishi Acme Gridley Six Spindle Automatic Bar Machines



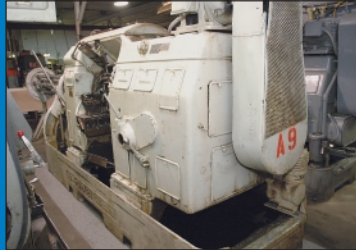
(11) 1-1/4" Acme Gridley Model RA-6 Six Spindle Automatic Bar Machines



1" Acme Gridley Model RAN-6 Six Spindle Automatic Bar Machines



(2) 9/16" Acme Gridley Model RA-6 Six Spindle Automatic Bar Machines



1-5/8" Acme Gridley Model RA-6 Six Spindle Automatic Bar Machine



1" New Britain Model 51 Six Spindle Automatic Bar Machine



16" X 40" Victor Model 1640 Gap Bed Engine Lathe



Large Quantity of Acme Gridley and New Britain Bar Machine Tooling, Parts and Accessories

**ACME GRIDLEY BAR MACHINES**

1-5/8" Acme Gridley Model RA-6 Six Spindle Automatic Bar Machine; S/N 41022 (Machine No. A9), 4th Position Threading, Stock Reel & Stand (New 1942) SEE PHOTO

(2) 1-1/4" Mitsubishi Acme Gridley Six Spindle Automatic Bar Machines; SEE PHOTO

> S/N 2524 (Machine No. G6), 5th Position Reaming, Stock Reel & Stand (New 1991)

> S/N 2261 (Machine No. G5), 4th Position Threading, 5th Position Reaming, Stock Reel & Stand

(11) 1-1/4" Acme Gridley Model RA-6 Six Spindle Automatic Bar Machines; SEE PHOTO

> S/N 71578-C, 4th Position Threading, 5th Position Reaming, Hi / Lo Air Positive Drive, Stock Reel & Stand (New 1980)

> S/N 71526-C (Machine No. N/A), 4th Position Threading, 5th Position Reaming, Hi / Lo Air Positive Drive, Stock Reel & Stand (New 1979)

> S/N 71240-C (Machine No. A4), 3rd Position Accelerated Reaming, Stock Reel & Stand (New 1974)

> S/N 71017-C (Machine No. A8), 4th Position Threading, 5th Position Reaming, Hi / Lo Drive, Stock Reel & Stand (New 1972)

> S/N 71020-C (Machine No. A10), 4th Position Threading, 5th Position Reaming, Hi / Lo Positive Drive, Stock Reel & Stand (New 1970)

> S/N 70425 (Machine No. A1), 4th Position Threading, 5th Position Reaming, Stock Reel & Stand

> S/N 71705-B (Machine No. A10), Spindle Stop, 4th Position Threading, 5th Position Reaming, Stock Reel & Stand (New 1968)

> S/N 71626-B (Machine No. A7), 3rd Position Threading, 5th Position Reaming, Stock Reel & Stand (New 1967)

> S/N 71189-B (Machine No. A2), 4th Position Threading, Stock Reel & Stand (New 1962)

> S/N 71887-A, 4th Position Threading, Pick Off / Back Finish Attachment, Stock Reel & Stand

> S/N 70828, 3rd Position Threading, 5th Position Reaming, Stock Reel & Stand

1" Acme Gridley Model RAN-6 Six Spindle Automatic Bar Machines; S/N C-23244-N (Machine No. A5), 3rd Position Threading, 5th Position Reaming, Stock Reel & Stand (New 1979) SEE PHOTO

(2) 1" Acme Gridley Model RA-6 Six Spindle Automatic Bar Machines; SEE PHOTO

> S/N 23565 (Machine No. A6), 4th Position Threading, Pick Off & Back Finish, Stock Reel & Stand

> S/N 23681 (Machine No. 1), Stock Reel & Stand

(2) 9/16" Acme Gridley Model RA-6 Six Spindle Automatic Bar Machines; SEE PHOTO

> S/N A-23770 (Machine No. G3), 3rd Position Threading, Pick-Off / Back Finish Attachment, Hi / Lo Air Positive Drive, Stock Reel & Stand (Rebuilt 1979)

> S/N 22048-C (Machine No. G2), 3rd Position Threading, Pick-Off / Back Finish Attachment, Drill Speeders, Stock Reel & Stand

Huge Quantity Acme Gridley Bar Machine Tooling, Parts & Accessories Consisting of; Cams, Gears, Collets, Collets Pads / Fingers, Drill Holders, Tap Holders, Hex Collets & Fingers, Dove Tail Form Tools, Chip Totes

**NEW BRITAIN BAR MACHINES**

1-5/8" New Britain Gridley Model 61 Six Spindle Automatic Bar Machine; S/N 26416 w/ Stock Reel & Stand

1" New Britain Model 51 Six Spindle Automatic Bar Machine; S/N 36123, w/ Stock Reel & Stand SEE PHOTO

(3) 1" New Britain Gridley Model 60 Six Spindle Automatic Bar Machines; S/N 27756, 31761, 21989, All Equipped w/ Stock Reel & Stand SEE PHOTO

Large Quantity Various New Britain Tooling, Parts & Accessories

**CHUCKING MACHINES**

1-5/8" New Britain Model 61 Six Spindle Automatic Chuck; S/N 33404, Threading w/ Loader

1-1/4" Acme Gridley Model RA-6 Six Spindle Automatic Chuck; S/N n/a

**BROWN & SHARPE SCREW MACHINES**

(5) 1-1/2" Brown & Sharpe Model 2G Automatic Screw Machines; S/N 13074, 542-2-1270, 542-2-1860, 542-2-514, 542-2-1681

(5) 1-1/2" Brown & Sharpe Automatic Screw Machines; S/N 13074 (Machine No. B8), 542-2-1270 (Machine No. B4), 542-2-1860 (Machine No. B3), 542-2-514 (Machine No. B1) & 542-2-1681 (Machine No. B5)

(2) 1-1/4" Brown & Sharpe Model 2G Automatic Screw Machines; S/N 12791 (Machine No. B2) & 542-2-211 (Machine No. B9)

(3) 3/4" Brown & Sharpe Model OG Automatic Screw Machines; S/N 542-2-544 (Machine No. B7), 14572 (Machine No. B6) & 542-0-280 (Machine No. N/A)

Large Quantity Brown & Sharpe Tooling, Parts & Accessories

**AIR COMPRESSOR & RELATED**

30 HP Ingersoll Rand Model SSR-UP6-150 Horizontal Tank Mount Rotary Screw Air Compressor; S/N PX8077U06338, 150 PSIG, 6,130 Hours (New 2006)

Ingersoll Rand Model TMS 0140 Refrigerated Air Dryer; S/N TMS0140-061-9323, 232 Max PSI (New 2006)

24" Dia. X 6' High Air Receiving Tank

**CHIP PROCESSING SYSTEM & RELATED**

Reclamat Oil Recovery System Chip Processing System; Project No. 2194, 6' X 6' Hydraulic Tub Dump Loader, 8' Long Incline Auger Conveyor, Reclamat Chip Spinner; Project 2194-4, Approx. 500 Gal Oil Tank w/ Sandpiper Diaphragm Pump, 1-1/2 HP Motor Tilter, Various Tanks, PB Controls SEE PHOTO

Barrett Centrifugal Chip Spinner; S/N 1200207-E, 1 HP Motor, Solvent Recovery Tank

**TOOLROOM MACHINERY**

16" X 40" Victor Model 1640 Gap Bed Engine Lathe; S/N 536206, 8" 3-Jaw Chuck, 14" 4-Jaw Chuck, Draw Bar, Aloris Tool Post Holder, Spindle Speeds: 30-1800 SEE PHOTO

2 HP Bridgeport Series I Vertical Milling Machine; S/N 199471, Spindle Speeds: 60-4200 RPM, 6" Swivel Base Mill Vise SEE PHOTO

6" X 18" Chevalier Model FSG-618M Hand Feed Surface Grinder; S/N A3827030, 6" X 18" Kanetsu Permanent Magnetic Chuck SEE PHOTO

6" X 12" Boyar Schultz Model H612 Hand Feed Surface Grinder; S/N 3996, 6" X 12" Ceramax Permanent Magnetic Chuck

6" X 12" Boyar Schultz Model Six Twelve Hand Feed Surface Grinder; S/N 17014, 6" X 12" Permanent Magnetic Chuck

Hammond Model CBW-6 Chip Break Grinder; S/N 1461, 1 HP Motor, 3450 PRM, Coolant Pump

**MISC. MACHINERY**

(2) Four Way Type Tumbling Drum Parts Washers; S/N N/A, 14" Dia. X 6' Long Barrel, Chain Driven 1/3 HP Electric Motor

16" Snow Model DR-3-A Leadscrew Tapping Machine; S/N 36401-1, 1 HP Motor, 13" X 21" T-Slotted Table, Coolant Pump SEE PHOTO

Zero Model 55-6-300R DF-1PH Dry Abrasive Blast Cabinet; S/N MTE 43551, Dust Collector System

5,000 Lb X 4' X 4' Fairbanks Model LF-HR39XX Platform Scale; S/N M106118, 50 Lb Bench Top Scale, Digi Model DC-190 Digital Real Out

24" Grob Type NS24 Vertical Band Saw w/ Blade Welder; S/N 2591

Kent Owens Model 2-20 Horizontal Milling Machine; S/N 2-20-1539, 12" X 48" T-Slotted Table, Coolant Pump

15" Powermatic Model 1150 Four-Spindle Production Drill; S/N 0155349, 0155350, 0155351, 0155352, 20" X 65" Table

15" Chas G. Allen Three-Spindle Production Drill; S/N N/A, 14" X 36" Table (2) 300 Amp Hobart Model TR-300 AC / DC Arc Welding Power Sources; S/N 77WS13681, 12 RT-34649

16" Dia. Max Manufacturer Universal Pedestal Disc Grinder; 1 HP Motor

(5) Various Pedestal & Bench Type D.E. Grinders & Buffers to 1-1/2 HP

(8) Various Bench & Floor Type Drills to 15"

Bench Mount Horizontal Drill UltraVibe Model 45 Tumbler 28" Ultrasonic Vibratory Bowl

LIFT TRUCKS & RELATED 2,500 Lb TCM Model FCG15N5 LP Gas Solid Tire Lift Truck; S/N 832098, 3-Stage Mast, Side Shift, 7,181 Hours SEE PHOTO

Cap Unknown Forklift Jib Boom

**TOOLING & MACHINE ACCESSORIES**

Large Quantity Tooling & Machine Accessories Consisting of; Large Quantity Perishable Tooling, Drills, Taps, Reamers, Tool Holders, Vises, Rotary Tables & Many Other Related Items

**SHOP EQUIPMENT**

Large Quantity Shop Equipment Consisting Of; (3) Self Dumping Hoppers, (62) 18" Wide X 14" Deep X 12" Long Jarke Heavy Duty Steel Frame Stackable Stock Racks, (400) Approx. 14" X 18" X 6" Deep Steel Parts Trays, Letter Stamps, Shop Vacs, Pallet Jacks, Two-Wheel Hand Carts, Air Hose, Banding Dispenser Rig Tri-Stand, Cordless Drills, Portable Warehouse Ladder, Step Ladders, Extension Ladder, Pneumatic Box Staplers, Tables, Benches, Cabinets, Shelving, Rack & Many Other Related Items

All Screw Machine Ages Are Approximate

Huge Possible Scrap Opportunity

Dress Warm - This Building May Have No or Limited Heat



Large Quantity of Acme Gridley Collets



2,500 Lb TCM Model FCG15N5 LP Gas Solid Tire Lift Truck



Partial View (1 of 15) Brown and Sharpe Screw Machines



2 HP Bridgeport Series I Vertical Milling Machine



16" Snow Model DR-3-A Leadscrew Tapping Machine



6" X 18" Chevalier Model FSG-618M Hand Feed Surface Grinder