

**140,000 SQ. FT. PVC PROFILE EXTRUSION FACILITY INCLUDING EXTRUDERS, DOWNSTREAM, BLENDEES AND SUPPORT EQUIPMENT**

# PUBLIC AUCTION

**Bidsproffer.com**  
 To Become a Qualified Bidder on the Internet  
 See Instructions on Page 2



**NEW 2003**

90 MM Krauss Maffei Model KDM 90-26 Twin Screw Extruder



**NEW 2000**

50 MM Cincinnati Milacron Model TC-50 Twin Screw Co-Extruder



**NEW 2004**

150 HP Cumberland Engineering Model X1400 Central Plastic Granulator



(11) Lift Trucks of All Types By Komatsu, Toyota, Daewoo and Others

**Featuring:** (9) Complete PVC Co-Extrusion Lines w/ Krauss Maffei, Cincinnati & American Maplan Twin Screw Extruders from 50mm to 115mm Capacity, Lines Include: Vacuum Calibration & Cooling Tanks, Belt Pullers & Cut-off Saws, Lg. Qty. Additional Belt Pullers, Cut-Off Saws & Cooling Tanks, Extruder Parts & Spare Gear Boxes, Late Model Chillers, Air Compressors, Complete Mixing Room w/ 850 Lb. and 450 Lb. Intensity Mixers w/ Hoppers, Coolers and Related, 100 HP Rapid & 150HP Cumberland Granulators (To 2004), 55KW Herbold Pulverizer, 200HP Blower System, (2) Late Model Columbia Tectank Welded Steel Silos w/ Load Cells, (14) Various Size Bolt Together Steel Silos, Surge Bins, Vacuum Unloading Systems, Extrusion Routers, Weima Pull Rod Shredder, 30" X 30" Weima Central Granulator, Extrude Hone, Lift Trucks, Pallet Racks, Huge Quantity Shop Equipment & Supplies.



**Plant Closed**  
**EXTERIOR PROFILES CORPORATION**

1576 Magnolia Dr. – Macon, Mississippi 39341  
 30 Miles South of Columbus, MS

**SALE DATE:**  
**Thursday,**  
**March 8th**  
 Starting at 9:00 AM

**INSPECTION:**  
**Wednesday, March 7th**  
 10:00 AM to 4:00 PM

[www.cia-auction.com](http://www.cia-auction.com)

**Features:**

- Upcoming Sale Information
- Liquidation & Equipment Section
- Email Auction Notification
- Recent Auction Results
- Lot Catalog Listings
- Photo Galleries
- Downloadable Forms
- Complete Terms of Sale
- Staff Profiles
- Reference Information



Overall View 450 LB and 850 LB Capacity Intensity Type Batch Mixer Blending Systems



**NEW 2005**

**Load Cells**

(2) 59'-1" High X 11'-11" Dia. Columbian Tectank Welded Steel Material Silos

SALE UNDER THE MANAGEMENT OF



## Cincinnati Industrial Auctioneers Inc.

2020 DUNLAP ST., CINCINNATI, OHIO 45214 PHONE (513) 241-9701 / FAX (513) 241-6760  
 WEBSITE: [cia-auction.com](http://cia-auction.com) for printable brochures, catalog, terms and proxy-bidding



# THURSDAY, MARCH 8TH – 9:00 AM



54 MM American Maplan / Battenfeld Model MBEX2-54 Twin Screw Co-Extruder



114 MM Krauss Maffei Model KMD 114-26 Extruder



90 MM Krauss Maffei Model KDM 90-26 Twin Screw Extruder



110 MM Krauss Maffei Model KMD 2-110 Counter Rotating Twin Screw Extruder



100 MM American Maplan Model TS-100 Twin Screw Extruder



88 MM American Maplan Model TS-88 Twin Screw Extruder



9' X 10' American Maplan Battenfeld Model P250 SE/2000 Belt Puller



14' X 7' Belt American Maplan Cleated Belt Puller



(1 of 20) Cincinnati Milacron Cleated Belt Pullers To 11' Wide and 8' Long

**ALL EXTRUSION LINES WILL BE SOLD SEPARATE AND OVERALL HIGHEST BIDS OR BID TO PREVAIL**

## EXTRUSION LINES

### 114 MM Krauss Maffei Model KMD 114-26

**Extruder;** S/N 211308, 150 HP at 1750 RPM, Ratio 54.68:1, 12-Temperature Zones, Oil Cooled Barrel w/ Water Cooled Heat Exchanger, Dual Load Hoppers w/ Magnets, Line 1 (**New 1997**) **SEE PHOTO**

### > 55 MM Cincinnati Milacron Model CM-55HP

**Co-Extruder;** S/N 4252A01/92/28, 40 HP at 1750 RPM, 11 Temperature Zones, Oil Cooled Barrel w/ Water Cooled Heat Exchanger, Loud Hopper w/ Magnet (**New 1992**) **SEE PHOTO**

> **Downstream Consisting of;** 18' X 20" Dia. Mfg. Unk. Stainless Steel Vacuum Calibration Tank, 14" X 7' Belt American Maplan Cleated Belt Puller w/ Pneumatic Height Adjustment, RDN Upcut Extrusion Saw w/ 7" O.D. Cutting Capacity

**110 MM Krauss Maffei Model KMD 2-110 Counter Rotating Twin Screw Extruder;** S/N 211069, Ratio 72:1, 100 HP at 1775 RPM, 14-Temperature Zones, Loader Hopper, Oil Cooled Barrel, Line 4 (**New 1988**) **SEE PHOTO**

> **65 MM Cincinnati Milacron Model CM-65HP Counter Rotating Twin Screw Co-Extruder;** S/N 4213AU/94-20, 60 HP (Est.), 8-Temperature Zones, Loader Hopper, Oil Cooled Barrel (**New 1994**)

> **Downstream Consisting of;** 20' X 24" Stainless Steel Vacuum Calibration Tank w/ (3) 5 HP Motors, 7-1/2" X 8' Cincinnati Milacron Cleated Belt Puller w/ 5 HP Independently Driven Belts, Conair Model UCA-18 Upcut Saw; S/N 3414864

**100 MM American Maplan Model TS-100 Twin Screw Extruder;** S/N 126907, 75 HP at 1780 RPM, 14-Temperature Zones, Ratio 34.1:1, Loader Hopper, Line 8 (**New 1990**) **SEE PHOTO**

> **62 MM American Maplan Model DSK-62R Twin Screw Co-Extruder;** S/N N/A, 40 HP at 2500 RPM, Loader Hopper (**New 1990**)

> **Downstream Consisting of;** 12' X 20" Dia Steel Calibration Tank w/ Pneumatic Diaphragm Pump, 7-1/2" X 7' Cincinnati Milacron Cleated Belt Puller w/ 5 HP Independently Driven Belts

## WEBCAST BIDDER INSTRUCTIONS

- > All Internet bidders must register for this auction at [www.bidspotter.com](http://www.bidspotter.com) at least 48-Hours Prior to the Sale Date, **if you do not you will not be approved.**
- > All Internet bidders must Post a Deposit of Approx. 25% of Your Planned Spending Budget or \$5,000.00 Minimum with Cincinnati Industrial Auctioneers in Order to be approved to Bid. Those who do Not Post the Deposit Will Not be Approved. **Period.**
- > **Only Major Items Will be Available for Online Bidding.** Please refer to the Listing on [www.bidspotter.com](http://www.bidspotter.com) for Available Online Items.
- > There is a 15% Buyer's Premium in Effect for All Online Purchases.
- > We Highly Recommend that Potential Buyers Attend this Auction & Bid Live Onsite. This will give you the Ability to Inspect the Items & Fully Appreciate Their Condition, Along with Saving You 3% of the Buyer's Premium.



**No Last Minute Registrations will be accepted. Make Sure to Register & Post Your Deposit No Later than 48-Hours Prior to the Start of the Auction.**



50 MM Cincinnati Milacron Model TC-50 Twin Screw Co-Extruder



50 MM Cincinnati Milacron Model TC-50 Conical Co-Extruder



80 MM Cincinnati Milacron Model CM-80 HP Twin Screw Extruder

**90 MM Krauss Maffei Model KDM 90-26 Twin Screw Extruder;** S/N 51001878, 100 HP at 1750 RPM, Ratio 42.1:1, Digital Control Panel w/ Monitor, Loader Hopper, Line 7 (New 2003) **SEE PHOTO**

> **50 MM Cincinnati Milacron Model TC-50 Twin Screw Co-Extruder;** S/N E66A0100008, 25 HP at 1740 RPM, 8 Temperature Zones, Loader Hopper, Digital Control Panel (New 2000) **SEE PHOTO**

> **Downstream Consisting of;** 20' X 21" Conair Stainless Steel Vacuum Calibration Tank w/ MSBHI Tank Control Panel, 7-1/2" X 7' Cincinnati Milacron Cleated Belt Puller w/ 5 HP Independently Driven Belts, American Maplan Upacting Cut-Off Saw

**88 MM American Maplan Model TS-88 Twin Screw Extruder;** S/N N/A, 75 HP at 1750 RPM, Ratio 43.8:1, 6-Temperature Zones, Loader Hopper, Line 10 **SEE PHOTO**

> **54 MM American Maplan / Battenfeld Model MBEX2-54 Twin Screw Co-Extruder;** S/N 0597-1, 35 KW Motor, Battenfeld BMC Smart Digital Controls (New 2003) **SEE PHOTO**

> **Downstream Consisting of;** 20' Cooling Tank Base Only, 11" X 7' Cincinnati Milacron Belt Puller w/ 5 HP Independently Driven Belts, American Maplan Upacting Cut-Off Saw

**88 MM American Maplan Model TS-88 Twin Screw Extruder;** S/N N/A, 75 HP at 1700 RPM, Ratio 43.8:1, 6-Temperature Zones, Oil Cooled Barrel, Hopper and Magnet, Line 2

> **50 MM Cincinnati Milacron Model TC-50 Conical Co-Extruder;** S/N E66A0100014, 40 HP Reliance Motor, Hopper and Magnet (New 2000) **SEE PHOTO**

> **Downstream Consisting of;** 20' X 36" American Maplan Stainless Steel Vacuum Calibration Tank w/ (2) 5 H.P Motors, 11" X 8' Cincinnati Milacron Cleated Belt Puller w/ 5 HP Independently Driven Belts, Conair Model DCA-18 Upcut Saw; S/N 19414869

**80 MM Cincinnati Milacron Model CM-80 HP Twin Screw Extruder;** S/N 4254A01/92/-10, 75 HP at 1740 RPM, Ratio 50:1, 11-Temperature Zones, Loader Hopper, Oil Cooled Barrel, Line 5 (New 1992) **SEE PHOTO**

> **55 MM Cincinnati Milacron Model CM-55HP Twin Screw Co-Extruder;** S/N 4252A01/94/9, 40 HP at 1760 RPM, Loader Hopper, Oil Cooled (New 1994) **SEE PHOTO**

> **Downstream Consisting of;** 20' X 20" Dia. American Maplan Stainless Steel Vacuum Calibration Tank w/ (2) 5 HP Motor, 7-1/2" X 7' Cincinnati Milacron Cleated Belt Puller w/ 5 HP Independently Driven Belts, RDN Upacting Cut-Off Saw

**62 MM American Maplan Model DSK-62R Extruder;** S/N 129438, 50 HP at 1765 RPM, Ratio-N/A, 8 Temperature Zones, Loader Hopper, Line 9 (New 1991)

> **Downstream Consisting of;** 7-1/2" X 7' Cincinnati Milacron Belt Puller w/ 5 HP Independently Driven Belts

**55 MM Cincinnati Milacron Model CM-55 Twin Screw Extruder;** S/N 4313A01/94-21, 50 HP at 1750 RPM, Ratio 60.5:1, 12-Temperature Zones, Loader Hopper, Oil Cooled, Line 6 (New 1994) **SEE PHOTO**

> **55 MM Cincinnati Milacron Model CM-55 Twin Screw Co-Extruder;** S/N 4252A01/93-22, 50 HP at 1780 RPM, 7-Temperature Zones, Loader Hopper, Oil Cooled (New 1993)

> **Downstream Consisting of;** 20' Sizing Tank Base Only w/ Manifolds and (1) 5 HP Motor, 7-1/2" X 5' Cincinnati Milacron Cleated Belt Puller w/ 5 HP Independently Driven Belts, Conair Model UCA-18 Upacting Cut-Off Saw; S/N 94144870

**OUT-OF-SERVICE EXTRUDERS**  
**(13) Cincinnati Milacron and Krauss Maffei Extrusion Machines, Out Of Service, Parts Machines**



55 MM Cincinnati Milacron Model CM-55HP Twin Screw Co-Extruder



55 MM Cincinnati Milacron Model CM-55HP Co-Extruder



55 MM Cincinnati Milacron Model CM-55HP Twin Screw Co-Extruder

**INFORMATION AND PHOTOS OF ADDITIONAL DOWNSTREAM EQUIPMENT INCLUDING CUT-OFF SAWS ON PAGES 6 AND 7**

**ALL EXTRUSION LINES WILL BE SOLD SEPARATE AND OVERALL HIGHEST BIDS OR BID TO PREVAIL**



Partial View 1 of 15 Various Stainless Steel Vacuum Calibration Tanks By American Maplan, Conair and Others

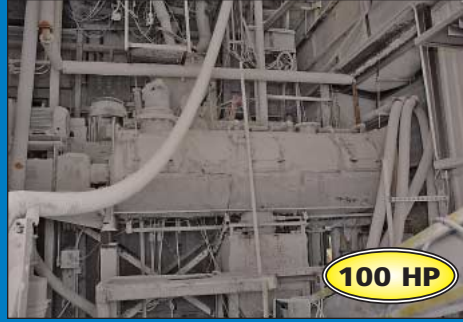


# THURSDAY, MARCH 8TH – 9:00 AM



**NEW 2004**

150 HP Cumberland Engineering Model X1400 Central Plastic Granulator



**100 HP**

450 LB Capacity Intensity Type Batch Mixer Blending System



**250 HP**

850 LB Capacity Intensity Type Batch Mixer Blending System



**NEW 2002**

(2) 270 Ton York Model YCAS0270EC46XFADB Central Water Chillers



55 KW Herbold Type PU500ZR Central Pulverizer



150 HP Mfg. Unk. Central Pulverizer



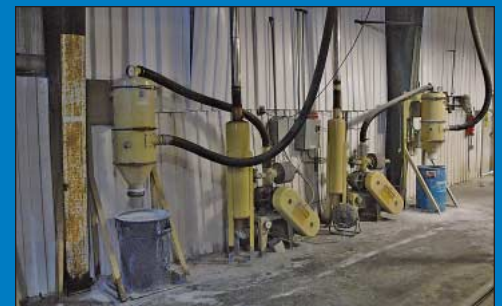
(8) 60" X 60" X 60" IMS Surge Bins



Thermal Care Accuchiller Portable Chiller



96" Dia. X 96" High Stainless Steel Water Holding Tank



(6) 15 HP Premier Pneumatics Vacuum Pumps w/ Premier Pneumatic Hoppers

## COMPOUND BLENDING / MIXING EQUIPMENT

**850 LB Capacity Intensity Type Batch Mixer Blending System;** Mfg. Unk. 850 LB Capacity Intensity Type Batch Mixer Rated at 11 Minutes Mixing Time, 250 HP Main Drive, 48" Dia Mixer, MTI Mischtechnik Model 2003 Cooling Unit; S/N 1555, Vessel Rated at 3,558 Lbs and 80 degrees Celsius Ambient Temperature, Allen Bradley Panelview Plus 1500 Touch Screen Control Panel **SEE PHOTO**

**450 LB Capacity Intensity Type Batch Mixer Blending System;** Mfg. Unk. 450 LB Capacity Intensity Type Batch Mixer Rated at 11 Minutes Mixing Time, 100 HP Drive, 32" Dia Mixer, Littleford 40" Dia X 10 Ft. Cooling Unit, GSI Annunciator Panel and GSI Control Panel w/ Spectrum Digital Read Out **SEE PHOTO**

**36" Dia. Sweko Model XS48S86 Vibro-Energy Separator;** S/N 34047-A-498 **SEE PHOTO**

**48" Dia. Sifter Unit w/ Surge Bin and Avenger Conveyor** **SEE PHOTO**

**40" Dia. Kuson Screen Separator;** S/N 3819

Alanco Dust Collector

## GRANULATORS, SHREDDERS AND PULVERIZERS

**150 HP Cumberland Engineering Model X1400 Central Plastic Granulator;** S/N 48250-05003, 24" X 56" Capacity, 12" X 15" Input Chute, Blower and Cyclone (New 2004) **SEE PHOTO**

**100 HP Rapid Model 2442H Central Plastic Granulator;** S/N 5818, 24" X 42" Capacity, 10" X 10" Input Chute, Blower and Cyclone (New 1990's)

**75 HP Weima Central Plastic Granulator;** S/N N/A, 30" X 30" Chamber Size Open Router, Top Load Chute for Conveyor Access

**37 KW Weima Pull Roll Shredder;** S/N N/A, w/ 24" Wide Pull Rolls

**55 KW Herbold Type PU500ZR Central Pulverizer;** S/N 6563, Herbold Type MFT 55/5000 Blower **SEE PHOTO**

**150 HP Mfg. Unk. Central Pulverizer;** S/N N/A, 150 HP Marathon Model 6D445TTPN88389A Motor at 1,785 RPM, 460 Volts **SEE PHOTO**

## MATERIAL STORAGE SILOS AND LOADING EQUIPMENT

**(2) 59'-1" High X 11'-11" Dia. Columbian Tectank Welded Steel Material Silos;** S/N's 07-4549 and 07-4547,

59'-1" High X 11'-11" Dia., Nom. Capacity at 5,320 Cubic Feet, Each Unit has Foot Mounted Load Cells (New 2005) **SEE PHOTO**

**> 25 HP Premier Pneumatics Vacuum Pump**

**(6) 18' Dia X 24' High GSI Galvanized Bolt Together Silos**

**(2) 12' Dia X 16' High GSI Galvanized Bolt Together Silos**

**(4) 10' Dia X 10' High GSI Galvanized Bolt Together Silos**

**(2) 9' Dia X 16' High GSI Galvanized Bolt Together Silos**

**(8) 60" X 60" X 60" IMS Surge Bins** **SEE PHOTO**  
**40 HP IAC Model PD13-5 Vacuum Pump;** S/N 77M129 w/ Premier Pneumatics Hopper

**(6) 15 HP Premier Pneumatics Vacuum Pumps w/ Premier Pneumatic Hoppers** **SEE PHOTO**

**(2) 7-1/2 HP AE Whitlock Model Vac 7.5/2 Vacuum Pumps**

Large Quantity of Steel, Aluminum and PVC Material Piping

## CHILLERS AND RELATED

**(2) 270 Ton York Model YCAS0270EC46XFADB Central Water Chillers;** S/N RNLM004662, RNLM004663, R-22 Freon, 460 Volt, (3) 350 Watt Compressors, 344" X 88" X 96" Overall Dimensions, 19,339 LB Overall Weight (New 2002) **SEE PHOTO**

**110 Ton York Model YCAS0110EC46XFASB Central Water Chiller;** S/N RGM9000AA, R-22 Freon, 460 Volt, (2) 350 Watt Compressors, 175" X 88" X 98" Overall Dimensions, 9,686 LB Overall Weight (New 2001) **SEE PHOTO**

**5,000 Gallon Protank Pump Tank;** S/N N/A, (2) 50 HP and (1) 10 HP Pumps

**3,000 Gallon Manufacturer Unknown Pump Tank;** S/N N/A, (1) 40 HP Pump

**(3) ITT Heat Exchangers;** S/N 934916-01, 907333-01, 907333-02, Reliance Electric V/S Control Panel (New 2004)

**Thermal Care Accuchiller Portable Chiller;** S/N N/A, 3 HP Pump **SEE PHOTO**

**(3) 75 HP Sihi Central Water Pumps** **SEE PHOTO**

**96" Dia. X 96" High Stainless Steel Water Holding Tank** **SEE PHOTO**

**Rosedale Model H22306F1150S-0 Water Filter;** S/N RD-107-8, w/ (2) 10 HP Water Circulation Pumps, Water Piping, and Valves

# EXTERIOR PROFILES CORPORATION



Overall View 450 LB and 850 LB Capacity Intensity Type Batch Mixer Blending Systems



(2) 59'-1" High X 11'-11" Dia. Columbian Tectank Welded Steel Material Silos



Overall View (14) Corrugated Bolt Together Material Storage Silos



110 Ton York Model YCAS0110EC46XFASB Central Water Chiller



100 HP Gardner Denver Model EBP99D Electra Saver II Rotary Screw Air Compressor



(3) 75 HP Sihu Central Water Pumps

## AIR COMPRESSORS

**100 HP Gardner Denver Model EBP99D Electra Saver II Rotary Screw Air Compressor;** S/N S072628, 460 Volt, 73,275 Cont. Hours, 73,270 Load Hours (New 2000) **SEE PHOTO**

**100 HP Gardner Denver Model 207ECM201 Electra Saver II Rotary Screw Air Compressor;** S/N SO9751308-101, 460 Volts, 44,158 Total Hours

**100 HP Atlas Copco Model GA75 Cabinet Type Rotary Screw Air Compressor;** S/N HOLO20761, Out of Service (New 1994)

**40 HP Gardner Denver Model EBHOHP Rotary Screw Air Compressor;** S/N 444511

**15 HP Champion Model PL40 Horizontal Tank Air Compressor;** S/N L000037, 460 Amp, 120 Gallon Tank

**10 HP Kaeser Vertical Tank Air Compressor**

**Domnick Hunter Model CRD1800 Air Dryer;** S/N 3008070001, 1,020 Gallon Horizontal Tank (New 2006) **SEE PHOTO**

**Kaeser Model SM11 Air Dryer**

**Arrow Model 3529-1 Air Dryer**

**50 HP Gardner Denver Series 45 Vacuum Pump**

**(2) 15 HP Roots Rotary Blowers**

## TRANSFORMERS FOR EXTRUSION EQUIPMENT

(24) Transformers From 75 to 250 KVA Manufacturers Include Federal Pacific, GE, Cutler Hammer and Square D **SEE PHOTO**

## MISC. MACHINERY AND SHOP EQUIPMENT

Misc. Machinery and Shop Equipment Consisting: United Silicone Model US10 Decorating Press;

S/N 100406368B, (7) 15" Hitachi Model C15FB Miter Saws, 5,000 LB Salter Brecknell Platform Scale w/ Model 200E Digital Readout and 60" X 60" Platform, (2) Melton Model 16KG and (1) Slauterback Model AT-15 Hot Glue Applicators, (5) 76" X 24" X 180" Steeltree Series 25 One Sided Cantilever Racks, (20) Sect. Various Size and Style Adj. Beam Pallet Rack, (2) 2 Ton Yale Electric Chain Hoist w/ Pendant Control, Shop Carts, Material Carts, Banding Carts, Acetylene Carts, Shop Tables, (2) 8' Shop Ladders, Air Circulators, Shop Vacs, Safety Equipment, Large Quantity of Maintenance Room Equipment Including Machine Parts, Electrical, Plumbing, Electric and Cordless Tools and Other Related Equipment

**Maintenance Shop Machinery Consisting of;** 225 Amp Miller Bobcat 225 Gas Power Arc Welder / 800 Watt Generator, 300 Amp Miller CP-300 Mig Welder w/ Miller 22 A 24V Wire Feeder, 250 Amp Miller Syncrowave 250 Tig Welder, 150 Amp Miller Econotig Welder, Hypertherm Powermax 1000 G3 Series Plasma Cutter, 1-1/2 HP MSC Model 00685420 Vertical Milling Machine, 7" X 12" Wilton Model 3410 Horizontal Band Saw, 14" Delta Model 28-278 Vertical Band Saw, Maxus Model MXS30000 Bench Top Blast Cabinet, 2900 PSI Briggs and Stratton Elite Series Pressure Washer, HD Power Washer Model 1600 Pressure Washer, SprayTech Apex Series Piston Pump Paint Sprayer, Ridgid Model 300 Pipe Threader, 20 Ton Sunex Tool H-Frame Shop Press, D.E. Grinders, Sanders, Floor Drills, Dayton Model 3AA21 Dust Collector and Many Other Related Items

## OFFICE EQUIPMENT

**Office Furniture and Equipment Consisting;** (15) 4 & 5-Drawer Letter Files, (6) 2-Drawer Lateral Files, 2-Door Storage Cabinets, Steel & Wood Bookshelves, Reception Area Furniture, Conference Room Furniture, Desks, Office Chairs, Media Carts, Brother Model 63 Fax Machine, Printek Printer, HP Laser Printers, Ink Jet Printers, and Other Related Items



Torit Cartridge Type Dust Collector



48" Dia. Sifter Unit w/ Surge Bin and Avenger Conveyor



36" Dia. Sweko Model XS48S86 Vibro-Energy Separator



Domnick Hunter Model CRD1800 Air Dryer



(24) Transformers From 75 to 250 KVA Manufacturers Include Federal Pacific, GE, Cutler Hammer and Square D



# THURSDAY, MARCH 8TH – 9:00 AM



(15) Conair, RDN and American Maplan Upacting Cut-Off Saws In Various Stages of Repair



**NEW  
2007**

Techno-Plast Model TP-GU150-3 Extrusion Cut-Off Saw



Partial View 1 of 5 Late Model American Maplan Upacting Cut-Off Saws



**NEW  
1999**

Camtech Fence Master II 52 Model FMIIS1510611 Two-Head CNC Router



(6) Supermax Model YCM-16VS Multi-Head Custom Built Extrusion Routers



Partial View Late Model Welding Equipment



**NEW  
2003**

12" X 36" Central Machinery Model T33274 Geared Head Engine Lathe



Partial View 1 of Numerous RDN Upacting Cut-Off Saws



5 HP Vectrax Model GS20V Variable Speed Vertical Milling Machine



3 HP Grizzly Model 34029 Variable Speed Vertical Milling Machine



12" X 24" Okamoto Model PSG-6FUA Hydraulic Surface Grinder

## 140,000 SQ. FT. MANUFACTURING FACILITY FOR SALE VIA PRIVATE NEGOTIATION

Info Will Be Available on Auction Day or email [jeffjr@cia-auction.com](mailto:jeffjr@cia-auction.com)

### EXTRUSION DOWNSTREAM EQUIPMENT

9" X 10" American Maplan Battenfeld Model P250 SE/2000 Belt Puller; S/N 0331-67-20 (New 2002)

SEE PHOTO

11" X 8' Hyde Plastics Equipment Model PP122 Belt Puller; S/N 2160 PP (New 2004)

7-1/2" X 7' Cincinnati Milacron Belt Puller w/ 5 HP Independently Driven Belts

(7) 7-1/2" X 6' Cincinnati Milacron Belt Pullers In Various Stages of Repair

Techno-Plast Model TP-GU150-3 Extrusion Cut-Off Saw; S/N 7014568a (New 2007)

SEE PHOTO

(2) Techno-Plast Model TPS-200 Extrusion Cut-Off Saws; S/N T533400/01, T536800/01 (New 1999)

(15) Conair, RDN and American Maplan Upacting Cut-Off Saws In Various Stages of Repair

SEE PHOTO

(10) Custom Built Vinyl Product Notchers

(6) Various Sized Vacuum Calibration Tanks

(2) Conair Model HTR Thermolators w/ TH-1 Micro Processor Controls

(3) Gear Driven Gaylord Tipppers

### EXTRUSION ROUTERS

Camtech Fence Master II 52 Model FMIIS1510611 Two-Head CNC Router; S/N 991779, 52" X 102" Work Area, (2) EMS-PC3 Drives, Camtech DRO, PC Controls (New 1999)

SEE PHOTO

SSD Contro Technology Model VRC-800 Pneumatic Extrusion Router; S/N VRC800-06, (2) 120" Long Extrusion Channels (New 2004)

SSD Control Technology Model VRC 2000 Vertical Routing Center; S/N N/A Out of Service

(6) Supermax Model YCM-16VS Multi-Head Custom Built Extrusion Routers; S/N 1043765, 1033725, 4114746, 4114745, 9085331 & 0103507, Vertical Mill Bases, (1) 19-Head, (1) 12-Head, (1) 9-Head, (1) 6-Head, (1) 15-Head, (1) Unknown Head, Servo II Power Feed Table, Pneumatic Clamps Pendant Control (New 1994)

SEE PHOTO

### STRETCH WRAPPERS AND STRAPPERS

65" Dia. Lantech Q-Series Rotary Pallet Stretch Wrap Machine

SEE PHOTO

7' Dia. Lantech Horizontal Rotary Stretch Wrapper; S/N LR001161, Control Panel, Out of Service

8' Dia. Highlight Revolver Model 9020 Horizontal Rotary Stretch Wrapper; S/N N/A, Control Panel, Out of Service

Signode Sure Tyer Strapping Machine; S/N N/A, 34" X 42" Max, Foot Pedal

SEE PHOTO

Signode LB-2300 Strapping Machine; S/N PT1205, 31" X 21" Max, Foot Pedal

(2) Signode Model SP-300 Plastic Strapping Machines

### BALER

Cram-A-Lot Model 60 Cont BD Hydraulic Baler; S/N 3178, 60" X 30" X 52" Capacity (New 1990)

SEE PHOTO

### TRUCKS

1986 Ottawa Model 30 Single Axle Spotting Tractor; S/N 61329, 6,942 Hours

SEE PHOTO



(11) Lift Trucks of All Types By Komatsu, Toyota, Daewoo and Others



Terex Model TA30N Pneumatic Tire Electric Boom Lift

## LIFT TRUCKS AND RELATED

(2) 5,000 LB. Komatsu Model FG25ST-12 Solid Tire LP Gas Lift Trucks; S/N 551018A, 562720A, 3-Stage Mast, 188" Lift Height, Side Shift, (1) w/ Auto Fork Adjustment

5,000 LB. Toyota Model 5FGC25 Solid Tire LP Gas Lift Truck; S/N 83489, 3-Stage Mast, 185" Lift Height, Side Shift, 3,750 Hrs.

(2) 5,000 LB. Daewoo Model G25E-3 Solid Pneumatic Tire LP Gas Lift Trucks; S/N CX-04310, CX-0411 Out of Service, 3-Stage Mast, 186" Lift Height, Side Shift

5,000 LB. Toyota Model 42-6FGCU25 Solid Tire LP Gas Lift Truck; S/N 60288, 3-Stage Mast, 189" Lift Height, Side Shift Out of Service

(3) 4,000 LB. Toyota Model 7FGU25 Solid Pneumatic Tire LP Gas Lift Trucks; S/N 72200, 66598, 72186, 3-Stage Mast, 189" Lift Height, Side Shift

12,000 LB. Yale Solid Tire LP Gas Lift Truck; S/N N/A, 3-Stage Side Shift, OOS

5,000 LB. Caterpillar Model GC25 Solid Tire LP Gas Lift Truck; S/N 4FM00657, 3-Stage Mast Out of Service

Terex Model TA30N Pneumatic Tire Electric Boom Lift; S/N 93210117, 30" Max Platform Height, 500 Max Capacity, Built-in Battery Charger **SEE PHOTO**

## TOOLROOM MACHINERY

12" X 24" Okamoto Model PSG-6FUA Hydraulic Surface Grinder; S/N 7479, Electric Chuck, 1" Grinding Wheel, Kanetsu Automatic Demagnetizer, Coolant

**SEE PHOTO**

16" X 54" Monarch Model C Geared Head Engine Lathe; S/N 30418, 16-Spindle Speeds: 17-700 RPM, 12" 3-Jaw Chuck, Taper Attachment, Inch/Metric Threading, Steady Rest

12" X 36" Central Machinery Model T33274 Geared Head Engine Lathe; S/N 29812, 18-Spindle Speeds: 60-1,550 RPM, 6" 3-Jaw Chuck, Taper Attachment, Inch/Metric

Threading, Steady Rest (New 2003)

**SEE PHOTO**

5 HP Vectrax Model GS20V Variable Speed Vertical Milling Machine; S/N 966156, 10" X 54" T-Slotted Power Table, Spindle Speeds: 70-3,600 RPM, Acu-Rite 200S2 XMill DRO

**SEE PHOTO**

3 HP Grizzly Model 34029 Variable Speed Vertical Milling Machine; S/N 23658, 10" X 50" T-Slotted Power Table, Spindle Speed 75-3,800 RPM, Saragon Mill Pro DRO

**SEE PHOTO**

Torit Model DF02-Y Cartridge Type Dust Collector Various Machine Accessories and Tooling

## INSPECTION EQUIPMENT

Lloyd Instruments Model LR10K Plus Universal Tensile Testing Machine; S/N 105638, DRO, IBM PC and Monitor

Romidot Model Romi Shape/DT-PVC Bi-Dimensional Measurement System; S/N DTPVC-B&W-00022, 11.8" X 7.8" Max Sample Size, 4" Sample Height, Monitor, Printer, Keyboard

(3) Q-Panel Company Model QUV-EM Accelerated Weathering Testers; S/N 87-4232-33, 85-25-80-29, N/A, Ultraviolet-Condensation-Temperature Testing Modes

C.W. Brabender Type DR-2051 Electronic Plastic-Corden Torque Rheometer; S/N 0316/PE

Other Related Inspection Equipment Consisting of; Little Ford Model W-10-B Laboratory Test Mixer; S/N 20149-2957, Datacolor Tru-View 2 Color Test Booth; S/N 991406, Mitutoyo Model SJ-201P Surfrest; S/N 110661, Micro-Tech Ace Light Source w/ Navitar 1-6010 Microscope and PC, Datacolor Datflash 100 Colorimeter Spectro-Photo Meter, Pin Gauges, Block Gauges, Parallels, Tensitron TR-4000, Calipers, Micrometers, Magnetic Gauge Stand and Many Other Related Items

## EXTRUDE HONE

Dynetics Corp. Model HL-90 Hydraulic Extrude Hone; S/N: H2386, Dual 10" Work Heads, 30 HP Hydraulic System, Auto Clamping, Low Use Machine



1986 Ottawa Model 30 Single Axle Spotting Tractor



Dynetics Corp. Model HL-90 Hydraulic Extrude Hone



Cram-A-Lot Model 60 Cont BD Hydraulic Baler



65" Dia. Lantech Q-Series Rotary Pallet Stretch Wrap Machine



Lloyd Instruments Model LR10K Plus Universal Tensile Testing Machine



United Silicone Model US10 Decorating Press



Partial View Large Quantity Maintenance Parts

# PUBLIC AUCTION

Plant Closed



## EXTERIOR PROFILES CORPORATION

1576 Magnolia Dr. – Macon, Mississippi 39341  
30 Miles South of Columbus, MS

**SALE DATE:**  
**Thursday, March 8th**  
**STARTING: 9:00 AM**

**INSPECTION:**  
Wednesday, March 7th  
10:00 AM to 4:00 PM



### Cincinnati Industrial Auctioneers Inc.

2020 DUNLAP ST., CINCINNATI, OHIO 45214  
PHONE (513) 241-9701 / FAX (513) 241-6760  
WEBSITE: [cia-auction.com](http://cia-auction.com)



(17) Extruders To 114MM



Granulators & Pulverizers



850 LB & 450 LB Blending Systems

FIRST CLASS MAIL!

PRE-SORT  
FIRST CLASS  
U.S. POSTAGE  
**PAID**  
CINCINNATI, OHIO  
PERMIT NO. 3593

### Important Mail

TO BE DIRECTED TO THE ATTENTION  
OF EXECUTIVE PERSONNEL

**THURSDAY, MARCH 8TH**

# PUBLIC AUCTION

Plant Closed

## EXTERIOR PROFILES CORPORATION

1576 Magnolia Dr.  
Macon, Mississippi 39341  
30 Miles South of Columbus, MS

### IMPORTANT NOTICE:

Although information has been obtained from sources deemed reliable, the auctioneer makes no warranty or guarantee, expressed or implied, as to the accuracy of the information herein contained. It is for this reason that buyers should avail themselves of the opportunity to make inspection prior to the sale. This brochure is intended to provide general information of the equipment being offered and is subject to errors, omissions, additions or deletions. Please check with the Auctioneer's Office for a final listing. Items offered may or may not necessarily be sold as described and/or photographed in this brochure.

MAIL BIDS ACCEPTED WITH A 25% DEPOSIT

### DIRECTIONS

From I-82, west of Columbus, MS, Exit I-45 South. Proceed I-45 South Approximately 24 Miles to Magnolia Dr. Across from Local Express Gas Station. Turn Right on Magnolia Dr. and make an immediate Left into the auction site. Watch for auction signs and parking.

### AUCTIONEERS

**Jeffrey L. Luggen**  
Auction License No. 642

**Cincinnati Industrial Auctioneers**  
Auction License No. 465F



### TERMS OF SALE

All equipment described herein will be sold "as is", "where is" to the highest bidder or bidders for cash in accordance with our regular terms and conditions of sale. Unless other satisfactory arrangements are made, a **25% deposit** in cash, certified or cashier's check payable to Cincinnati Industrial Auctioneers, Inc., is required on all purchases. Firm and personal checks accepted only if accompanied by a letter from your bank guaranteeing your funds. All sales are subject to state and/or local taxes unless a signed exemption form is presented at the time of purchase. All balances are due at the conclusion of the sale. No merchandise may be removed while the sale is in progress. All bidders must comply with our Standard Terms of Sale, copies of which will be available at the sale site or can be obtained from our website.

**12% ONSITE BUYER'S PREMIUM**  
**15% ONLINE BUYER'S PREMIUM**

SALE UNDER THE MANAGEMENT OF



## Cincinnati Industrial Auctioneers Inc.

2020 DUNLAP ST., CINCINNATI, OHIO 45214 PHONE (513) 241-9701 / FAX (513) 241-6760  
WEBSITE: [cia-auction.com](http://cia-auction.com) for printable brochures, catalog, terms and proxy-bidding

**SALE DATE**  
**Thursday,**  
**March 8th**  
**9:00 AM**