

PUBLIC

AUCTION

Bidspotter.com™
To Become a Qualified Bidder on the Internet
See Instructions on Page 2

PLANT CLOSED

GENERAL DYNAMICS LAND SYSTEMS

9801 Highway 78 – Ladson, South Carolina 29456

25 Miles Northwest of Charleston, South Carolina

ALL AUCTION AND INSPECTION ATTENDEES MUST BE U.S. CITIZENS WITH VALID I.D.

SALE DATE: TUESDAY, AUGUST 26TH, STARTING AT 9:00 AM

INSPECTION: MONDAY, AUGUST 25TH, FROM 10:00 AM TO 4:00 PM



Flow Jet Model 87K Traveling Head CNC Water Jet Cutting Machine



2007 Kenworth T300 Single Axle Diesel Service Truck



(110) 450 Amp Miller Deltaweld 452 Welders



14" X 20" Hyd-Mech Model S-20A Series III Automatic Miter Base Horizontal Band Saw



50'W X 400'L Large Vehicle Assembly Line – (57) Spanco Bridges, 25 Ton Lift and 17 Ton Rotator



(3) 5,000 Lb. Caterpillar Model C5000LP LP Gas Solid Tire Lift Trucks

GENERAL DYNAMICS LAND SYSTEMS / LADSON, SOUTH CAROLINA



1/2" X 14' LVD Model 130H75-MNC CNC Hydraulic Power Squaring Shear



14" X 20" Hyd-Mech Model S-20A Series III Automatic Miter Base Horizontal Band Saw



22,000 Lb. Capacity Caldwell Model 22LS-150 Post-Turner



Large Quantity Heavy Steel Welding, Assembly and Transport Fixtures



100'S of hand tools



(110) 450 Amp Miller Deltaweld 452 Welders



18" Hyd-Mech Model VW-18 Tilt Frame Vertical Band Saw



Close-up view of Lincoln Tig Welder



Ridgid Model 1822-1 Pipe Threader



Flow Jet Model 87K Traveling Head CNC Water Jet Cutting Machine

**NEW
2008**

WATER JET

Flow Jet Model 87K Traveling Head CNC Water Jet Cutting Machine; S/N 383089, 87,000 PSI, X-Axis 144", Y-Axis 80", 100" X 168" Water Table, MTA Model TAAEV0081 Water Chiller; S/N 2200128488 **(New 2008)** **SEE PHOTO**

SQUARING SHEAR

1/2" X 14' LVD Model 130H75-MNC CNC Hydraulic Power Squaring Shear; S/N 21982, Back Gauge, 10' Squaring Arm, LVD MNC 10 DRO **SEE PHOTO**

SAWS

14" X 20" Hyd-Mech Model S-20A Series III Automatic Miter Base Horizontal Band Saw; S/N 8A0707215, Blade Tension Monitor, Power Feed and Clamp, 1" Wide Blade, DRO, 22" X 40" Roller Out Feed **SEE PHOTO**

18" Hyd-Mech Model VW-18 Tilt Frame Vertical Band Saw; S/N JWA1008268, 1-3/8" Blade, DRO, Hydraulic Clamping **SEE PHOTO**

20" Powermatic Model 87 Vertical Band Saw; S/N 287416, 24" X 24" Table, Blade Welder

(3) 10" X 17" Wilton Model 7040M Horizontal Band Saws

WELDING POSITIONERS, FIXTURES & MATERIAL

(3) 6,800 Lb. Capacity Headstock / Tail Stock Welding Assembly Stations with Hydraulic Driven Headstocks; (4) 30" X 60" Bolt to Face Plate and 28" X 54" Rotating Bolt to Face Plate Rail Stock Systems; Each System Contains 450 Amp Miller 452 Deltaweld Power Source, Bernard Welding Boom **SEE PHOTO**

Large Quantity Heavy Steel Welding, Assembly and Transport Fixtures **SEE PHOTO**

Contents of Container # 896744 Aluminum Plates

Auction / Inspection Attendees and Removal Notice

- All auction and inspection attendees must be U.S. Citizens with Valid I.D.
- Proper attire required
- No cameras or briefcases will be allowed
- Special removal requirements including exclusive rigger may apply

Possible Late Additions

- See website approx. two weeks prior to auction for status
- Email christine@cia-auction to be added to notification list if included

Important Removal Notices

- Time is of the essence with regards to the removal of the equipment from the premises. All items must be removed by September 19th at 4:00 pm. Any items remaining will be considered abandoned and will be scrapped.
- Special removal terms including exclusive rigging company may apply. See auction catalog with terms one week prior to auction for details.

**NEW
2003**

WEBCAST BIDDER INSTRUCTIONS

- All Internet bidders must register for this auction at www.bidspotter.com at least 48-Hours Prior to the Sale Date, **if you do not you will not be approved.**
- All Internet bidders must Post a Deposit of Approx. 25% of Your Planned Spending Budget or \$5,000 Minimum with Cincinnati Industrial Auctioneers in Order to be approved to Bid. Those who do Not Post the Deposit Will Not be Approved. **Period.**

SALE DATE: TUESDAY, AUGUST 26TH STARTING AT 9:00 AM



(3) 6,800 Lb. Capacity Headstock / Tail Stock Welding Assembly Stations with Hydraulic Driven Headstocks



(100+) Available

(110) 450 Amp Miller Deltaweld 452 Welders



(110) 450 Amp Miller Deltaweld 452 Welders

WELDING EQUIPMENT

(110) 450 Amp Miller Deltaweld 452 Welders; Approx. (48) w/ 12' Bernard Floor Mounted Welding Booms and Miller Model 70/75 Wire Feeds

SEE PHOTO

(8) 800 Amp Nelson Model ARC-800 Stud Welders

750 Amp Miller Load Bank

(4) 450 Amp Lincoln Model 455M Powerwave Welders; with Lincoln Model 10M Power Feed

(10) Late Model Miller and Lincoln Tig Welders; (2) Lincoln Precision Tig 375, (2) Miller Dynasty 350's, (2) Miller Syncrowave 350LX's, Miller Dynasty 300DX, Miller Syncrowave 250, (2) Miller Dynasty 200's

SEE PHOTO

(8) Miller Spectrum 2050 Plasma Cutters

SEE PHOTO

Large Quantity of Welding Supplies and Accessories consisting of; Wire Feeds, Gauges, Rods, Tig Guns, Wire Feed Guns, Electric Grippers, Descalers, Welding Clamps, Regulators, Wire Brushes, Safety Clothing, Gloves, Grinding Wheels, and Other Related Items - See Auction Catalog for Specific Details

TOOLROOM MACHINERY

2 HP Wells Index Vertical Milling Machine; S/N N/A, 9" X 42" T-Slotted Table, Spindle Speed 50 - 4,200 RPM

24" Alzmetall Model AB4/SV Variable Speed Geared Head Drill; S/N 20352, 18" X 24" T-Slotted Table

28" Wilton Model 350 9-Speed Single Spindle Geared Head Drill

5' Arm X 10" Col. Cincinnati Bickford Super Service Radial Arm Drill; S/N 2E-862, 20 - 2,300 RPM

Ridgid Model 535 Pipe Threader; S/N EB1028, Cut Off and Reaming Attachment **(New 2003)**

SEE PHOTO

Ridgid Model 1822-1 Pipe Threader; S/N EA235580907

100 Ton Enerpac Model IPH100013 H-Frame Hydraulic Press; S/N 003080, Enerpac E4 Z-Class Power Unit

52" X 16 Ga. CP Machine Tool Manual Kick Shear; S/N 0803030

Numerous Grinder and Sanders

INSPECTION EQUIPMENT

Phase II Model 900-331 Analog Hardness Tester; S/N 11213 **(New 2009)**

Mettler Toledo Model DFWKR Portable Vehicle Scale; (4) 18-1/2" X 30" Platforms, 40,000 Lb. Capacity

Skidmore Wilhelm Model MZ-100 Bolt Tension Calibrator

Large Quantity Inspection Equipment Including; 48" X 96" and 24" X 36" Starret Granite Surface Plates, Mitutoyo Bench Type Micrometer, (2) 40" SPI Digital Calipers, 18" SPI Digital Height Gauge, 60 Lb. ACS Digital Counting Scale, Approx. (75) Torque Wrenches by Armstrong, Apex and Johnson, Pin Gauge Sets, Doptin Gauges, Digital Dial Indicators, Protractors, Micrometer Set, Parallels, V-Blocks, Angle Plates, Meters, and Many Other Items



(10) Late Model Miller and Lincoln Tig Welders

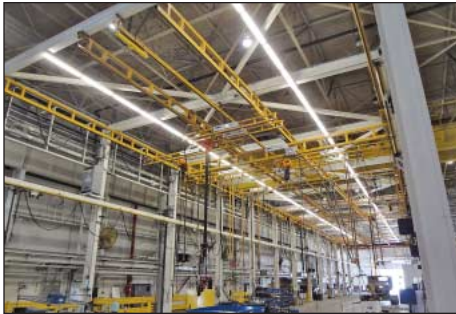


Large Quantity Hand Tools, Power Tools, and Test Equipment



(8) Miller Spectrum 2050 Plasma Cutters

GENERAL DYNAMICS LAND SYSTEMS / LADSON, SOUTH CAROLINA



50'W X 400'L Large Vehicle Assembly Line – (57) Spanco Bridges, 25 Ton Lift and 17 Ton Rotator



(2) 34,000 Lb. (Approx.) Vehicle Rotators



57,000 Lb. Capacity Autoquip Scissor Lift Table w/ 40" X 18' Long Platform and 25' Long Vehicle Exit Fixture

ASSEMBLY LINE AND RELATED

50' Wide X 400' Long X 25' High (Approx.) I-Beam Constructed Super Structure w/ (57) Spanco Bridges from 1/2 Ton to 2 Ton Cap.; These Bridges Support Either Assembly Tools or Electric Hoists

57,000 Lb. Capacity Autoquip Scissor Lift Table w/ 40" X 18' Long Platform and 25' Long Vehicle Exit Fixture

SEE PHOTO

(2) 34,000 Lb. (Approx.) Vehicle Rotators

SEE PHOTO

(2) 34,000 Lb. Autoquip Scissor Lift Tables w/ 41" X 61" Tables

72" Wide X 100' Long Caterpillar Type Moving Belt Conveyor

55" Wide X 25' Long Heavy Duty Channel Constructed Servo Driven Vehicle Turntable

(4) Superior Controls Central Control Panels for Assembly Line; Panel Contains Power Flex 7005 Power Logic Controls, Power Flex 40 Controls, AB1606-XL Power Supply

(4) 25 KVA Guard II Transformers (Approx.) 650' Aluminum Busway and (31) Disconnects

VEHICLE ASSEMBLY EQUIPMENT

Aeroquip Pro Crimp 1380 Crimp System with Enerpac Power Unit; with Large Quantity of Brass and Titanium Fitting Also Includes Aeroquip Cut-Off Saw

Hurst Model 409R002 Jaws of Life / Air Bag System; S/N 125591

(8) 16,000 Lb. Sefac Model 1600M72 Electric / Hydraulic Vertical Type Vehicles Jacks

SEE PHOTO

(2) 9,500 Lb. Capacity Warn Model 9.5ti Thermometric Wrenches

(2) Warn Air Power SPI 12V on Board Air Compressors

(3) Robinair Model SPX Refrigerant Recovery Units

3 Ton Norco Model 78605 Shop Crane with Electric Power Pack

1,250 Lb. Norco Model 72675 Power Tran Lift / Table

FREE-STANDING CRANES AND JIB CRANES

(3) 2,000 Lb. X 24' Approx. Span X 36' Approx. Long Spanco Free Standing Overhead Crane Systems; (Approx.) 36' Long X 9' High Harrington Electric Hoist

SEE PHOTO

1,000 Lb. X 22' Approx. Span X 45' Approx. Long Spanco Free Standing Overhead Crane System; 45' Long X 12' High, 1,000 Lb. Ingersoll Rand Pneumatic Hoist

1,000 Lb. X 12' Approx. Span X 23' Approx. Long Spanco Free Standing Overhead Crane System; (Approx.) 23' Long X 12' High, 1,000 Lb. Ingersoll Rand Pneumatic Hoist

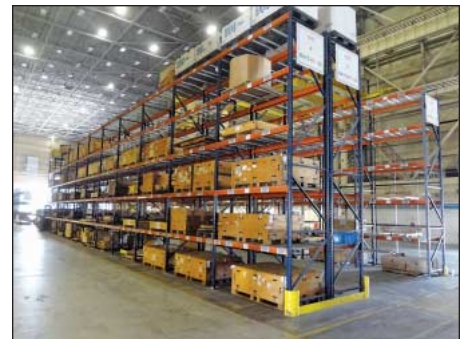
1,000 Lb. X 9' Approx. Span X 15' Approx. Long Spanco Free Standing Overhead Crane System; (Approx.) 15' Long X 11' High, No Hoist

(3) 1,000 Lb. X 10' Arm Handling Systems Floor Mounted Rotating Jib Cranes; 18' High Column, with 1/2 Ton Harrington Electric Hoists

500 Lb. X 14' Arm Spanco Floor Mounted Rotating Jib Crane; 14' Arm X 12' Column, 500 Lb. Harrington Pneumatic Hoist

CHILLER

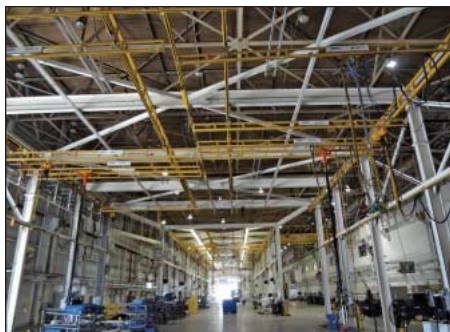
Trane Intellipak Model 5XHHF5540 Chiller; S/N C07K11221, (4) Compressors, (6) Condenser Fans, 450 PSIG, R-22



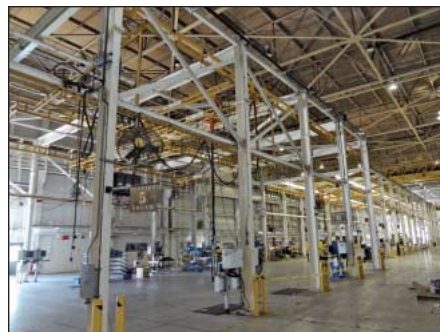
Late Model Pallet Rack



(8) 16,000 Lb. Sefac Model 1600M72 Electric / Hydraulic Vertical Type Vehicles Jacks



50'W X 400'L Large Vehicle Assembly Line – (57) Spanco Bridges, 25 Ton Lift and 17 Ton Rotator



(3) 2,000 Lb. X 24' Approx. Span X 36' Approx. Long Spanco Free Standing Overhead Crane Systems

SALE DATE: TUESDAY, AUGUST 26TH STARTING AT 9:00 AM



2007 Kenworth T300 Single Axle Diesel Service Truck



1995 Ford L8000 Diesel Tandem Axle Flat Bed Crane Truck



2005 GMC C7500 Diesel Single Axle Flat Bed Truck

TRUCKS, VEHICLES AND TRAILERS

2007 Kenworth T300 Single Axle Diesel Service Truck; VIN # 2NKMHD7X76M199359, CAT Model C7330 Diesel Engine, Automatic Allison Transmission, Equipped with 10,000 Lb. Auto Crane Model 10006H Crane; S/N 1206-272, 25' Max Reach, 10,500 Watt Miller Trailblazer 302-Diesel Welder Generator, Auto Crane Hydraulic Air Compressor, 50" X 13' Service Bed, Rhino Lining, Auto Crane Service Bed, Rear Out Rigger, 9,301 Miles
SEE PHOTO

2005 GMC C7500 Diesel Single Axle Flat Bed Truck; VIN # IGDK7C1C16F401475, Caterpillar Model C7 Diesel Engine, Tekonsha Automatic Transmission, 8' X 10' Steel Deck Bed, with 5th Wheel Type Ball Hitch, 75,560 Miles
1995 Ford L8000 Diesel Tandem Axle Flat Bed Crane Truck; VIN # 1FDZU82E4SVA55409, 6-Cylinder Cummins Diesel Engine, 8-Speed Eaton Fuller Manual Transmission with 47,000 Lb. Terex Model TC-4792 Crane; S/N 4900695264, 92' Max Reach with Jib, 8' X 20' Steel Top Flatbed, Front and Rear Hydraulic Outriggers, 17 Ton Johnson Crane Block with 5/8" White Rope, 4,903 Miles
SEE PHOTO

2008 Ford E-350 12-Passenger Van; VIN # 1FBNE31L28DB47155, V8 Econoline Gas Engine, Automatic Transmission, 44,940 Miles
2011 - 20,000 Lb. Carryon Trailer Corp Model HDX Tandem Axle Gooseneck Type Equipment Trailer; VIN # V4YMGN2825CG007777, 8' Wide X 22' Long Dowe Tail Type Deck, with Drive-On Ramps

FORK LIFTS AND MATERIAL HANDLING

14,000 Lb. Caterpillar Model DP70 Dual Front Pneumatic Tire Diesel Lift Trucks; S/N T200-62153, 2-Stage Mast, Floor Position, 640 Hours
SEE PHOTO

8,000 Lb. Caterpillar Model GP40K1 Pneumatic Tire LP Gas Lift Truck; S/N AT29C00771, 3-Stage Mast, Side Shift, 4,164 Hours
SEE PHOTO

8,000 Lb. Yale Model GLP080 LP Gas Dual Front Pneumatic Tire Lift Truck;

S/N B813DOI858T, 3-Stage Mast, 185" Lift Height, 10,700 Hours

(2) 6,000 Lb. Linde Model H30T-03 LP Gas Solid Tire Lift Trucks; S/N H2X351L0791530, 8,363 Hours, H2X351L079163, 625 Hours, 4-Stage Mast, Side Shift

(3) 5,000 Lb. Caterpillar Model C5000LP LP Gas Solid Tire Lift Trucks; S/N AT9011626, AT9011643, and AT9011627, 3-Stage Mast, 187" Lift Height, 4,841 Hours
SEE PHOTO

2,500 Lb. Raymond Model RA525 Electric Walk Behind Stacker; S/N RA507-02634, 128" Lift Height, 24 Volt, Built in Charger

Bobcat Model 763 Skid Steer Loader; S/N 512265740, Solid Rubber Tires, 66" Wide Bucket, 1,611 Hours
SEE PHOTO

Factory Cat Model 48 Sit Down Type Electric Floor Sweeper; S/N 48-8103, Built in Charger, 1,026 Hours

(8) 5' Wide X 22' Long Track Type HD Vehicle Transfer Buggies

(2) A&G Mercury Model 460EZ LP Gas Tugger Units; S/N 2310 and 2311

(8) Tandem Axle Shop Built HD Material Transfer Wagons

SHOP AND SUPPORT EQUIPMENT

Vestil Model SWA-48-R Rotary Pallet Stretch Wrapper; S/N 525238, 48" Turntable, 60" Vertical Lift, Foot Pedal

(2) 8' X 22' Steel Hazardous Material Storage Containers; Vented, Equipped with Sprinklers and Lighting

Titan Heavy Duty Multi-Purpose Skid Mounted Hydraulic Unit with 300 HP, 20 HP and 10 HP Motors

(2) Landa Model VH4-3000 Steam Type Power Wash Systems

Jenny Model SJ-120 Steam Cleaner

(2) New Air 1.B.600 Packaging System

22,000 Lb. Capacity Caldwell Model 22LS-150 Posi-Turner; S/N 07-81703-2, 160" Overall Width
SEE PHOTO

Well Stocked Maintenance Crib Including; Plumbing, Electrical, Hardware, Hydraulics, Fuses, Safety Equipment, Lighting and Assorted Machine Repair Parts

Large Quantity Late Model Shop and Support Equipment Consisting of; (75) Sections Various Size Adjustable Beam Pallet Rack, (7) Eagle Flammable Safety Cabinets, (2) 14-Drawer Lista Tool Cabinets, (6) 48" Arm Double Sided Cantilever Racks, (20) Various Size Lift Truck Type Self Dumping Hoppers, 500 Lb. Presto Hydraulic Stacker, Cabinets, Carts, Racks, Shelves, Tools and Related

Mechanics Tool Crib Secure Area with 100's of Mechanics Tools Including; Assorted Standard and Metric Conventional and Impact Sockets, Assorted Size Standard and Metric Combination Wrenches, Torque Wrenches, Hammers, Mallets, Screwdrivers, C-Clamps, Vice Grips, Adjustable Wrenches, Chain Falls, Levels, Safety Equipment

Large Quantity Contractors, Mechanics and Maintenance Tools Consisting of; Large Quantity of Electric, Cordless and Pneumatic Hand Tools by Bosch, Dewalt, Milwaukee, Matco and Numerous Other Manufacturers, (6) DE Bench Grinders, Mitre Saws, Milwaukee Mag Base Drill, (10) Hydraulic Bottle Jacks, (2) 6 Ton Hydraulic Floor Jacks, Nexiq Pro-Link Graphix Model 104004 Diagnostic Computer Scanner, (2) Armstrong Slide Hammer Puller Sets, SPX Seal and Bearing Driver Set, CDI Model DPT-1200RWT Electronic Torque Multiplier, Dewalt Laser Level, Assorted Fiberglass Step Ladders to 10', (4) Knack Portable Job Boxes, (50) (Approx.) Portable Tool Boxes by Armstrong, Kobalt, Kennedy, Snap On and Others - Most Tool Boxes Contain Wide Variety of Hand and Power Tools and Many Other Related Items

OFFICE FURNITURE

Large Quantity Late Model Haworth Modular Office Furniture Including; 12' X 24' 4-Person, 12' X 12' 2-Person, and 24' X 48' 14-Person 65" High Cubicles, with Overhead Lateral Files, 3-Drawer Files, Office Chairs

(20) Executive Office with Desks, Credenzas, Bookshelves, and Chairs

(4) 60" Sharp Flat Screen Televisions

4' X 12' Conference Room Table

Large Quantity of Lateral File Cabinets, 4 and 5 Drawer File Cabinets



8,000 Lb. Caterpillar Model GP40K1 Pneumatic Tire LP Gas Lift Truck



(3) 5,000 Lb. Caterpillar Model C5000LP LP Gas Solid Tire Lift Trucks



Bobcat Model 763 Skid Steer Loader



Large Quantity Late Model Shop Equipment



Large Quantity Late Model Office Equipment



Large Quantity Fabricated Steel Racks and Fixtures

PUBLIC AUCTION PUBLIC
PLANT CLOSED

GENERAL DYNAMICS LAND SYSTEMS

9801 Highway 78
 Ladson, South Carolina 29456
 25 Miles Northwest of Charleston, South Carolina
ALL AUCTION AND INSPECTION ATTENDEES MUST BE U.S. CITIZENS WITH VALID I.D.

TUESDAY, AUGUST 26TH
STARTING AT 9:00 AM
 INSPECTION: Monday, August 25th
 from 10:00 AM – 4:00 PM



(140) Welders All Types

Cincinnati Industrial Auctioneers Inc.
 2020 DUNLAP STREET
 CINCINNATI, OHIO 45214

PRE-SORT
 FIRST CLASS
 U.S. POSTAGE
PAID
 CINCINNATI, OHIO
 PERMIT NO. 3593

FIRST CLASS MAIL!



Late Model Vehicles



Flow Water Jet



Important Mail
 TO BE DIRECTED TO THE ATTENTION
 OF EXECUTIVE PERSONNEL

PUBLIC AUCTION PUBLIC
PLANT CLOSED

GENERAL DYNAMICS LAND SYSTEMS

9801 Highway 78
 Ladson, South Carolina 29456
 25 Miles Northwest of Charleston, South Carolina
ALL AUCTION AND INSPECTION ATTENDEES MUST BE U.S. CITIZENS WITH VALID I.D.

TERMS OF SALE

All equipment described herein will be sold "as is", "where is" to the highest bidder or bidders for cash in accordance with our regular terms and conditions of sale. Unless other satisfactory arrangements are made, a 25% deposit in cash, certified or cashier's check payable to Cincinnati Industrial Auctioneers, Inc., is required on all purchases. Firm and personal checks accepted only if accompanied by a letter from your bank guaranteeing your funds. All sales are subject to state and/or local taxes unless a signed exemption form is presented at the time of purchase. All balances are due at the conclusion of the sale. No merchandise may be removed while the sale is in progress. All bidders must comply with our Standard Terms of Sale, copies of which will be available at the sale site or can be obtained from our website. 12% buyer's premium in effect for this sale.

DIRECTIONS

Facility is Approximately 10 Miles North West of Charleston Airport. From I-26 Exit at US 78 West 205A. Proceed West on Highway 78 Approximately 2 Miles to Sale Site on Left. Watch for Auction Parking and Sale Entrance Signs.

IMPORTANT NOTICE:

Although information has been obtained from sources deemed reliable, the auctioneer makes no warranty or guarantee, expressed or implied, as to the accuracy of the information herein contained. It is for this reason that buyers should avail themselves of the opportunity to make inspection prior to the sale. This brochure is intended to provide general information of the equipment being offered and is subject to errors, omissions, additions or deletions. Please check with the Auctioneer's Office for a final listing. Items offered may or may not necessarily be sold as described and/or photographed in this brochure.

MAIL BIDS ACCEPTED WITH A 25% DEPOSIT

AUCTIONEERS

Cincinnati Industrial Auctioneers
 License No. 2566
 Jeffrey L. Luggen, License No. 1250



15% ONSITE BUYERS PREMIUM
18% ONLINE BUYERS PREMIUM