

PUBLIC AUCTION

Hardware Manufacturer Including Cold Headers, Thread Rollers, Wire Machinery, OBI Presses, Mills, Lathes, Grinders, Drills, Tooling, Toolroom and Support Equipment

Plant Closed

HARDWARE MANUFACTURING CO.

1 Industrial Tract – Hudson, New York 12534
30 Miles South of Albany, New York

SALE DATE
WED., SEPTEMBER 2ND
STARTING: 10:00 AM

INSPECTION: Tuesday, September 1st
from 10:00 AM to 4:00 PM



CINCINNATI
INDUSTRIAL AUCTIONEERS

auctioneers | appraisers | since 1961

Contact Information
2020 Dunlap St.
Cincinnati, Ohio 45214
Phone 513-241-9701
Fax 513-241-6760
www.cia-auction.com



5/16" National 3-Die 3-Blow Cold Header

FIRST CLASS MAIL!

PRE-SORT
FIRST CLASS
U.S. POSTAGE
PAID
CINCINNATI, OHIO
PERMIT NO. 3593

Important Mail

TO BE DIRECTED TO THE ATTENTION
OF EXECUTIVE PERSONNEL

Hardware Manufacturer Including Cold Headers, Thread Rollers, Wire Machinery, OBI Presses, Mills, Lathes, Grinders, Drills, Tooling, Toolroom and Support Equipment

Plant Closed

HARDWARE MANUFACTURING CO.

1 Industrial Tract – Hudson, New York 12534
30 Miles South of Albany, New York

SALE DATE:
Wednesday, September 2nd
Starting at 10:00 AM

INSPECTION:
Tuesday, September 1st from 10:00 AM to 4:00 PM



(13) Waterbury and Hartford Thread Rollers To 1/2"

DIRECTIONS: Facility is Approx. 35 Miles Southeast of Albany, New York. From I-87 Exit at Route 23 Hudson Exit No. 21. Proceed East on Route 23 Approx. 7 Miles into Hudson. Go Right onto Columbia Ave. Go Approx. 1-1/2 Miles on Columbia and Then Go Left onto Route 66. Go 1/2 Miles on Route 66 to Merle Ave. Go Right Onto Merle and Proceed to Sale Site at the Intersection of Merle Ave. and Industrial Tract. Watch for Auction Signs

IMPORTANT NOTICE: Although information has been obtained from sources deemed reliable, the auctioneer makes no warranty or guarantee, expressed or implied, as to the accuracy of the information herein contained. It is for this reason that buyers should avail themselves of the opportunity to make inspection prior to the sale.

TERMS OF SALE: All equipment described herein will be sold "as is", "where is" to the highest bidder or bidders for cash in accordance with our regular terms and conditions of sale. Unless other satisfactory arrangements are made, a **25% deposit** in cash, certified or cashier's check payable to Cincinnati Industrial Auctioneers, Inc., **is required on all purchases.** Firm and personal checks accepted only if accompanied by a letter from your bank guaranteeing your funds. All sales are subject to state and/or local taxes unless a signed exemption form is presented at the time of purchase. **All balances are due at the conclusion of the sale.** No merchandise may be removed while the sale is in progress. **All bidders must comply with our Standard Terms of Sale,** copies of which will be available at the sale site or can be obtained from our website.

MAIL IN BIDS: Mail in bids will be accepted with a 25% deposit.

15% ONSITE BUYERS PREMIUM • 18% ONLINE BUYERS PREMIUM



(5) Bliss OBI Presses To 45 Ton



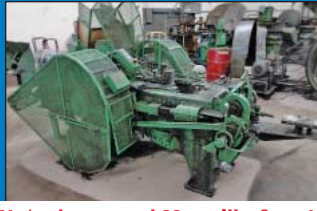
Toolroom Machinery Including Mills, Lathes, Grinders

Auctioneers

Jeffrey L. Luggen

Joseph M. Luggen

Ryan L. Luggen – Apprentice Auctioneer



(10) DSSD Cold Headers by Waterbury and Manville frm 1/4" to 1/2" and Nilson 4-Slide



(3) Hartford High Speed Thread Rollers, (11) Waterbury Farrel Thread Rollers to 1/2" and Slotters



(4) Bliss OBI Presses, Mills, Lathes, Grinders, Tooling and Accessories



Steel Inventory, Misc. Machinery, Wire Baskets, Shop and Support Equipment

MULTI DIE COLD HEADER

5/16" National 3-Die 3-Blow Cold Header; S/N 19811, 3-1/8" Max Kickout Length, 90 PPM, With Wire Straightener

COLD HEADERS

(2) 1/2" Waterbury Farrel Model 33 DSSD Headers; S/N 87763 and 89695-45, 4" Max Shank Length, 70 PPM

(2) 3/8" Manville Model 3 DSSD Headers; S/N 3782 and 3948, 3" Max Shake Length, 70 PPM

(2) 5/16" Manville Model 312C DSSD Headers; S/N 4442 and N/A, 2-1/2" Max Shank Length, 110 PPM

5/16" Waterbury Farrel Model 11 DSSD; S/N 96713-78, 2-1/2" Max Shake Length, 110 PPM

(2) 1/4" Greenwood and Batley DSSD; with Wire Straighteners; S/N 19771 and 120205

3/16" Greenwood and Batley DSSD; with Sound Enclosure and Wire Straightener

1/8" National DSSD (Not in Service)

3/16" Greenwood and Batley DSSD (Not in Service - Missing Parts)

3/16" Waterbury Farrel Model 1 DSSD Toggle Type (Not in Service - Missing Motor)

1/4" Waterbury Farrel Model 2 DSSD Toggle Type (Not in Service - Missing Motor)

THREAD ROLLERS

1/2" Waterbury Farrel Model #30 Heavy Frame Thread Roller; S/N 22583-226110-932, 4" Max Thread Length, 8" Max Shank Length, 80 PPM, Pick And Place Transfer, Chain Feed Hopper

(2) 1/2" Waterbury Farrel Model #30 Mid Frame Inclined Automatic Thread Rollers; S/N 51916533 and

179775830, 4" Max Thread & Shank Length, 60 PPM, Lift Blade Hopper

1/2" Greenwood & Batley #30 Inclined Automatic Thread Roller; S/N 17998, 6" Max Shank Length, 4" Max Thread Length, 90 PPM, With Rotary Hopper

3/8" Waterbury Farrel Model #20 Heavy Frame Inclined Automatic Thread Roller; S/N N/A, 3" Max Thread & Shank Length, 125 PPM, Rotovane Hopper

(2) 3/8" Waterbury Farrel Model #20 Inclined Automatic Thread Rollers; S/N 11368 and (1) n/a, 3" Max Thread & Shank Length, 125 PPM, Lift Blade Hopper

(2) 5/16" Hartford Model 10-300 High Speed Automatic Thread Rollers; S/N 3-183-7 and 3-127-3, 3" Max Thread Length, 4" Max Shank Length, 300 PPM, Rotary Hopper

(2) 1/4" Waterbury Farrel Model 10 Heavy Frame Inclined Automatic Thread Rollers; S/N 762701288 and 1431-111696, 2" Max Thread and Shank Length, 150 PPM, Lift Blade Hopper

3/16" Hartford Model 0-400 Thread Roller; S/N 4-306-18, Rotovane Hopper *Parts Only*

5/32" Waterbury Farrel Model 0 Inclined Thread Roller; S/N N/A, Automatic, 1-1/2" Thread and Shank Length, 175 PPM, Lift Blade Hopper

WIRE DRAWERS

(2) 1/4" Fastener Engineers Model DK-02-20 Inline Wire Drawers; S/N 2721433 and 4721435, 20" Capstan, 7-60 FPM

SLOTTERS

1/2" Waterbury Farrel Model 2 Drop Type Converted to End Slotting Slotter; 4" Max Shank Length, 10, 15, 25 and 35 PPM, otary Hopper, Separate Coolant Tank and Pump

1/4" ITW Model 322 Shank Type Slotter; S/N 9399, No Feeder

FOUR SLIDE

3/32" Nilson Model S-1 Fourslide; S/N 82341, 1" Max Width Strip Material, 8" Feed Length, 234 SPM, with 2 Plane Straightener and Varidrive

NUT TAPPER

1/8" Snow Model NT-1 Nut Tapper; S/N 32527, 2" Tap Head Stroke, with Rotary Hopper

OBI PRESSES

45 Ton Bliss Model C45 OBI Press; S/N H360340-HP43276, Air Clutch, 3" Stroke, 3" Slide Adjustable, 12-1/4" Shut Height, w/ Air Clutch And Feeder

35 Ton Bliss Model C35 OBI Press; S/N H68845-HP52226, Air Clutch, 3" Stroke, 3" Slide Adjustable, 10-3/4" Shut Height, w/ Air Clutch And Feeder

32 Ton Bliss No. 20C Bliss OBI Press w/ Feeder

22 Ton Bliss Model C22 OBI Type Press; S/N 64774-1972, Air Clutch And Feeder

Bliss No. 18M Bliss OBI Press Hydraulic Hobbing Type Press With 11" Opening, Up-Acting

MILLING MACHINES

(3) 1 HP Bridgeport Variable Speed Vertical Mills; 9" X 36" and 9" X 42" Tables

(3) 1 HP Bridgeport 8-Speed Vertical Mills; 9" X 42" Tables

Cincinnati No. 203-10ML Horizontal Milling Machine; Vertical Head, S/N 5J2P5H-23, 10" X 54" Table

G&L Bickford Numeri-Center VMC; S/N 992-0001773, 26" X 52" Table, Westinghouse Controls

LATHES

16" X 54" Clausing Colchester Engine Lathe; S/N 6-0016-15895, 2,000 RPM

18" X 36" Mori Seiki Toolroom Lathe; S/N 2772, 1,800 RPM, 8" 6-Jaw Chuck

14" X 48" Southbend Toolroom Lathe; S/N 70TT201

12" X 36" Clausing Model 6349 Toolroom Lathe; S/N 2-2796, 1,300 RPM

7" X 24" Hardinge Bench Type Lathe; 6" 3-Jaw Chuck

GRINDERS

(2) Boyar Schultz Six Twelve Surface Grinders with Dedtru Attachments

10" X 24" Thompson Hydraulic Surface Grinder; S/N 38342

8" X 24" DoAll Model G-10 Hydraulic Surface Grinder

10" X 18" Abrasive No. 34 Surface Grinder

(5) Hand Feed Surface Grinders by Boyar Schultz and Clausing

12" X 24" Cincinnati OD Grinder; S/N 11751, 6" 4-Jaw Chuck

8" X 12" Gremby OD Grinder

K-O Lec Type BA860 Tool and Cutter Grinder; S/N 5789

MISCELLANEOUS MECHANICAL

Charmilles Model D400 Ram Type EDM; S/N 4014, 20" X 30" X 16" Tank, 2-Axis MSC DRO, ISOPlus P3 Control Panel

Thermo Electric Model F-1730 Electric Furnace; S/N L8H1, 12" X 8" X 8" Chamber

Coolux Type VK48 Electric Furnace; S/N 8984, 1,750 Temp, 18" X 10" X 8" Chamber

Approx. 100 Ton Shop Built Vertical Hobbing Press; 12" Stroke, Hydraulic Unit

Snow Model 1-NT Incline Tapper; S/N 32527

2-HP Dusty-Dustless Dust Collector

6" X 10" Kalamazoo Horizontal Band Saw

Sunnen Model MBB1650 Hone; S/N 51443, with Tooling

Rockford No. 24 "Hy-Draulic" Shaper, 15" Vise

B. Elliot No. 2M Shaper, 9" Vise

LIFT TRUCK

3,000 Lb. Clark Model C500-301 LP Gas Lift Truck; S/N 355-1236-2811, 2-Stage Mast, 154" Lift Height, 72" Mast

SHOP EQUIPMENT

Large Quantity of Shop Equipment Including; (4) Self Dumping Hoppers, Banding Sets, Greenerd Arbor Presses, 15 HP Westinghouse LeRo Air Compressor, 1 HP Ingersoll 2-Stage Air Compressor, (2) Presto Die Lifts, (4) DE Pedestal Grinders, Platform Scales, Steel Bender, Approx. (500) Steel Tote Pans, (25) 48" X 48" Collapsible Wire Baskets, Pedestal Fan, Electric Hand Tools and Many Other Related Items

MACHINE ACCESSORIES AND INSPECTION

Large Quantity of Machine Accessories, Tooling and Inspection

Equipment Including; Wilson Model 3-JR Hardness Tester, 18" X 24" Granite Plate, Micrometers, Gage Block Sets, Parallels, Dumore Tool Post Grinder, (5) Kurt and Bridgeport Mill Vises, 5-C and R-8 Collets, Collet Spin Fixture, Drill Chucks, Dividing Head, Rotary Tables, Hold Downs, and Many Other Related Items

RAW MATERIAL

Approx. 126,000 Lbs. (350-Coils) Various Size Strip Steel, Consisting of; #1050 Carbon Steel, Copper Coated Cold Rolled, Spectrum Stainless, Black Painted Cold Rolled and Other, Sizes Range From .024 X 1.187 to .045 X 3.750

Approx. 28,000 Lbs. Cold Heading Spooled Wire Consisting of; AKCH, Galvanized, 302 Stainless and Others, Diameter Range From .206 to .433

WEBCAST BIDDER INSTRUCTIONS

All Internet bidders must register for this auction at www.bidspotter.com at least 48-Hours Prior to the Sale Date, **if you do not you will not be approved.**

All Internet bidders must Post a Deposit of Approx. 25% of Your Planned Spending Budget or \$5,000.00 Minimum with Cincinnati Industrial Auctioneers in Order to be approved to Bid. Those who do Not Post the Deposit Will Not be Approved. Period.