

WORLD CLASS GLOBAL AUCTION OF EQUIPMENT AND MACHINERY  
USED IN A 450,000 SQ. FT. GLASS MANUFACTURING FACILITY. THE FACILITY  
MANUFACTURED, AMONG OTHER PRODUCTS, PATTERN & COATED FLAT GLASS,  
WINDOWS, DOOR & SOLAR PANEL GLASS, SHOWER DOORS, & TABLE TOPS

# PUBLIC AUCTION

**BidSpotter.com**  
To Become a Qualified Bidder on the Internet  
See Instructions on Page 2

Glass Manufacturing Plant Closed and all Machinery and Equipment is being sold

## ON THE FORMER PREMISES OF HERITAGE GLASS, LLC

1450 Lincoln Street – Kingsport, TN 37660

**SALE DATE: WEDNESDAY, JANUARY 18TH, STARTING AT 9:00 AM**

**INSPECTION: TUESDAY, JANUARY 17TH, FROM 10:00 AM TO 4:00 PM**



### Featuring

- Glass Tempering Lines
- Glass Casting
- Glass Edgers
- Glass Cutters
- Glass Washers
- Glass Coating Lines
- Coating Mixing Building
- Annealing Cooling Tunnel
- Centrifuges
- Glass Conveyor
- Toolroom Machinery
- (13) Lift Trucks
- Cat Loader
- Skid Steers
- Rolling Stock
- Generators
- 1,000 KVA Transformers
- Switchgear
- (300) Motors
- Air Compressors
- Dust Collectors
- Cooling Towers
- Regenerative Oxidizer
- Maintenance Crib
- Support Equipment



**NO HEAT  
DRESS WARM**



Sale Under The Management Of

**CINCINNATI INDUSTRIAL AUCTIONEERS**

auctioneers | appraisers | since 1961 | [cia-auction.com](http://cia-auction.com) | [info@cia-auction.com](mailto:info@cia-auction.com)  
2020 Dunlap St., Cincinnati, Ohio 45214 Phone 513-241-9701 Fax 513-241-6760





# WEDNESDAY, JANUARY 18TH



(2) US Centrifuge Model A560 Automatic Separator Centrifuges



Integrated X-Y Glass Cutting System



(2) 64" Wide Triulzi Model SYA.1610.8.1+4 Washers



60" Wide Billco Model 400 Glass Washer



60" Billco Model 460-8 Glass Washer



Bottero Model Mercury 308 Double Edger Systems

## GLASS DOUBLE EDGER SYSTEMS

**Bottero Model Mercury 308 Double Edger Systems;** S/N GG-308A / 19335 & GG-308A-19337, Consisting of (2) 80" Wide Bottero 308 Twin Pencil Edgers w/ (4) Spindles per Side, 90 Degree Transfer Conveyor, Infeed Conveyor, Outfeed Conveyor (New 2011) SEE PHOTO

**Schiattili Angelo Model BFT12.2000 Double Edger System;** S/N 892, Consisting of (2) 80" Wide Schiattili Angelo Model BFT12-2000 Double Sided Pencil Edgers w/ (3) Spindles per Side, 90 Degree Transfer Conveyor, Infeed & Outfeed Conveyor (New 2004) SEE PHOTO

**Glassline Double Edger System;** S/N 39415-218, Consisting of (2) Glassline Two-Sided Four Spindle Pencil Edgers, Glassline Transfer Machine, AB Panelview Plus 1000 Control, Infeed & Outfeed Conveyors

## CENTRIFUGES / SLURRY TREATMENT SYSTEMS

**(2) US Centrifuge Model A560 Automatic Separator Centrifuges;** S/N 01060, with Controls, 75 GPM, 60 Liter Bowl, Structural Steel Stand SEE PHOTO

**Slurry Treatment System with Welded Carbon Steel Tank,** approx. 6' Wide X 20' Long X 8' High, 2-Bin, Drag Chain, (2) 20 HP Water Recirculation Pumps, Chemical Feed Pumps, Controls, (8) S.S. Vertical Cylindrical Mixing Tanks

## GLASS CUTTING SYSTEM

**Integrated X-Y Glass Cutting System** Consisting of; SEE PHOTO

> (2) Millennium Project No. 6140-001 Y-Cut Bridges; S/N's 6140-001-CAB100 & 6140-001-CAB200, 96" Max Ribbon Width, Each Bridge w/ (8) Cutting Heads, Jump Cut Capability, Each Bridge has PLC Control Panels

> (2) Reliance Electric Programmable X-Cut Bridges; Each Bridge Set at Angle Cut to Allow For Cutting at Set Speeds, Reliance Central Control Room w/ Tripp-Lite Battery Backup System, System Controls Upgraded in 2011 by A.M. Madsen Enterprises

> Millennium Defect Marking System

> Millennium Acceleration Conveyor Module

> 92" Wide Grenzenbach Exit Conveyor w/ 96" x 96" Air Lift Table

> Farr Size 10-D / Part No. 79457-001-B Dust Collector

**Note: Glass Cutting System will be Sold Piece Meal & Overall with High Bid or Bids to Prevail - Consult Auction Catalog for Specifics**

## GLASS WASHERS / CONVEYOR

**(2) 64" Wide Triulzi Model SYA.1610.8.1+4 Washers;** S/N's DOUC50033 & DOUC50014, Horizontal, Steel, Multiple Zone, System Controls (New 2011) SEE PHOTO

**60" Wide Billco Model 400 Glass Washer;** S/N W011002, Horizontal, Steel, Approx. 84" Wide X 84" Long Washer Section with Forced Air Dryer Section, Controls (New 2011) SEE PHOTO

**60" Billco Model 460-8 Glass Washer;** S/N W07119, Horizontal, with Controls (New 2007) SEE PHOTO

**Large Quantity Flat Glass Panel Power Conveyor;** 48" - 84" Wide by Bottero / Glassline



Schiattili Angelo Model BFT12.2000 Double Edger System



# ON THE FORMER PREMISES OF HERITAGE GLASS, LLC



6' Wide x 60' Long Stainless Steel Coating Tunnel w/ Power Conveying System



60" Wide TGL Tempering System Glass Tempering Line



Munters Model ICA-1000-031 Dehumidifying Unit/ Coating Room

## (2) GLASS TEMPERING LINES

**60" Wide TGL Tempering System Glass Tempering Line;** S/N 96-3317, with Inline Tempering Furnace, Electric, Multiple Zone, approx. 60" Wide X 90' Long, Rope Pulley-Type Conveyor Drive System, with Upgraded Electrical System Controls, Air Quench System, with Approx. 72" Wide X 75' Long Air Quench Conveyor, rope Pulley Type with (5) High Capacity Air Quench Fans/Blowers from 75 HP to 350 HP, Allen Bradley Powerflex Electrical Controls, Duct Work, Associated Secondary blowers, Air Quench Control System **SEE PHOTO**

**60" Wide TGL Tempering System Glass Tempering Line;** S/N 2775, with Inline Tempering Furnace, Electric, Multiple Zone, Approx. 60" Wide X 90' Long, rope Pulley-Type Conveyor Drive System, with Electrical System Controls, Air quench System, Approx. 72" Wide x 75' Long Air Quench Conveyor, Rope Pulley-Type with (5) High Capacity Air Quench Fans/Blowers from 75 HP to 350 HP, Allen Bradley Powerflex Electrical Controls, Duct Work, Associated Secondary Blowers, Air Quench Control System

**Large Quantity of Tempering Furnace Heating Elements and Other Accessories – Some New in Boxes**

## GLASS COATING BOOTHS / FILTRATION SYSTEM

**6' Wide x 60' Long Stainless Steel Coating Tunnel w/ Power Conveying System;** Modular Bolt Together Construction, Exhaust Fans, w/ Single Station Reciprocating Type Spray Head, Allen Bradley Panelview 600 Controls **SEE PHOTO**

**72" Wide x 30' Long Stainless Steel Coating Tunnel w/ Power Conveying System;** High Speed Linear Reciprocator, Bridge type, Single Head, Steel Construction with System Controls, Crest Vision Systems Digital Cameras, (2) Pelco Video Monitors, Exhaust Fans

**Munters Model ICA-1000-031 Dehumidifying Unit;** S/N 487, with Desitche Microprocessor Control System (New 2007)

## GLASS CASTING EQUIPMENT

**Rurex-Stahl Casting System Consisting of;** (2) 104" Wide Rurex-Stahl Casting Machines; S/N's 10/36.646-01 & 10/36.646-02, Track Wheels, Rurex-Stahl 7-Roll Water Cooled Apron Table 104" Wide, Rurex-Stahl Contract No. 10/30-646 Main Control Panel

w/ Siemens Micromaster PLC Modules (New 2010)

Approx. 50 Rurex-Stahl Casting Rolls – Some New in Boxes

**(2) 72" Glass Casting Machines;** Water Cooled Rolls, 480-Volt, Variable Speed **SEE PHOTO**

**(2) 72" Track Type Casting Machines;** 5-Roll Apron Attachment

**2-Zone Zed-Tec Working End Section & For Hearth / Refiner Gas Fired Section;** (2) Combustion Fans, Co Max II Laser Level Gage (New 2010)

**Zed-Tec Pallet Type Gas / Air Mixer** **SEE PHOTO**

**North American Model 8548-XX Gas / Air Mixer**

## MODULAR COATING MIX BLDG.

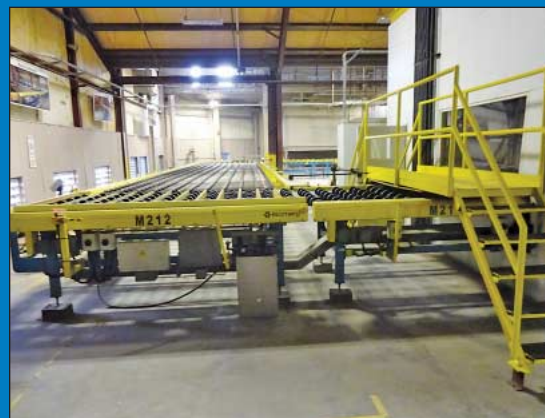
**15' Wide X 35' CCIS Portable / Modular Coating Mix Building;** Outfitted w/ Grated Steel Floor, (2) Kremlin Type 20-50 Pneumatic Pumps, (2) Precise S.S. Settling Tanks, Graco Diaphragm Pump, Fume Hood, Fairbanks Electronic Scale, A/C Unit, Explosion Proof Lights, Eyewash Station, (6) Entrance Doors, Beacon 410 Gas Monitor



72" Wide x 60' Long Infrared Heating Tech. Model ITC02Z-138KVA Drying Oven w/ Power Conveyor



15' Wide X 35' CCIS Portable / Modular Coating Mix Building



Large Quantity of Glass Conveyor





104" Wide Rurex-Stahl Casting Machine



104" Wide Rurex-Stahl Casting Machine



(2) 72" Glass Casting Machines



Hi-Vac Model 320 Vacuum System



Cnud Lehr Cooling Tunnel

### ANNEALING LEHR COOLING TUNNEL

Cnud Lehr Cooling Tunnel; Job #3710, 106" Wide Ribbon Capacity, Multiple Zone Air Cooling-Blower Systems, Approx. 12' Wide Bed x 200' Long, Modular Construction, RET Capability Rated at 900 C Input & 100 C Output, 10-Zone System w/ Spang 480-Volt / 35 KVA Power Center, Allen Bradley Centerline MCC, Cooling Tunnel Rebuilt in 2011 w/ New Rolls, Bearings, Heaters & Controls (New 2010) **SEE PHOTO**

### GLASS MARKING SYSTEM

84" Wide Bridge Type Marking System w/ Videojet 3320 Printers

### DRYING OVENS

72" Wide x 60' Long Infrared Heating Tech. Model ITIC02Z-138KVA Drying

Oven w/ Power Conveyor; Infrared Multiple Zone, with Controls (New 2009) **SEE PHOTO**

72" Wide x 30' Long Infrared Heating Tech. Model ITIC Drying Oven w/ Power Conveyor; Allen Bradley Panelview 700 Controls

### COOLING TOWERS

Marley Model NC Class Cooling Tower; S/N 810587-A1-NC8306J1CG, Approx. 20' Wide X 15' Deep X 15' High skid Mounted with (2) 100 HP chiller Water Recirculation Pumps, Piping, Controls **SEE PHOTO**

Tower Tech Model TTHT.233.319 Cooling Tower; S/N 1072.42.02.01.01, Approx. 20' Wide X 35' Long X 15' High, with 200 HP chilled Water Recirculation Pump, Piping, Controls (2003) **SEE PHOTO**

Tower Tech Model TTMT.144.319 Cooling Tower; S/N 1103.16.03.01.01,

Approx. 20' Wide X 20' Deep X 15' High, with 200 HP chilled Water Recirculation Pump, Piping, Controls (1995)

### REGENERATIVE OXIDIZER

Tann Corp Model TR1195C Regenerative Thermal Oxidizer; S/N 1131-07, Dual Tank Design, with Associated Blowers, Duct Work, Exhaust Stack, PLC Controller, Operator Interface, Flame Safeguard, 1.5m BTU/HR, 75 HP Fan Motor (New 2007) **SEE PHOTO**

### STAND BY AIR COMPRESSOR

Ingersoll Rand Model XP1000 Stand By Diesel Air Compressor; S/N 4FCBGB49U403656, Diesel, Package System, 300 HP Cummins Diesel Engine, 500 Gallon Fuel Tank, Battery Tender (New 2008) **SEE PHOTO**



Zed-Tec Pallet Type Gas / Air Mixer



# ON THE FORMER PREMISES OF HERITAGE GLASS, LLC



Marley Model NC Class Cooling Tower



Tann Corp Model TR1195C Regenerative Thermal Oxidizer



Ingersoll Rand Model XP1000 Stand By Diesel Air Compressor

## AIR COMPRESSORS / DRYERS

(2) 100 HP Atlas Copco Model GA75W Air Compressors; S/N 1310313749 (1994) and HOL020947 (1995), Rotary Screw, Package System, with Programmable Controls and Elektronikon Controls

100 HP Ingersoll Rand Model SSR-XF100 Air Compressor; S/N F11711U95037, Rotary Screw, Package System, with Controls

(2) 75 HP Atlas Copco Model GA75+ Air Compressor; S/N AP16103114 and AP1610336, Rotary Screw, Package System, with Elektronikon Graphic Controls (New 2006)

SEE PHOTO

60 HP Atlas Copco Model GA45 Air Compressor; S/N AII362962, Rotary Screw, Package System, with Elektronikon Controls (1999)

(5) Atlas Copco Models CD60, CD50, CD35 & CD25 Refrigerated Air Dryers w/ Digital Controls

Ingersoll Rand Model TMS1250 Air Dryer; S/N 0302-0462, Refrigerated, with Controls

(2) Hankison Model HHS-S-930 Air Dryers; S/N 1267713-1 and 1291784-1, Refrigerated, Dual cylinder, Skid Mounted, with Controls

Great Lakes Model GRF-1750W-436 Air Dryer; S/N 34626, Refrigerated, with Controls

## STAND BY GENERATORS / UPS / WATER PUMP

750 KW Caterpillar Model 3412 Generator; S/N 9EP00448, Diesel, 938 KVA, 750 KW, Package System, Skid Mounted (2000)

SEE PHOTO

312 KVA Caterpillar Model D343 Generator; S/N 300THS5, Powered by Cat Model D343 Diesel Engine w/ 500 Gallon Fuel Tank

Murphy Model MGC100 Generator; Powered by Cummins Model NT85G3 Diesel Engine w/ 500 Gallon Fuel Tank, 390 HP Engine

16" Dia. Worthing Water Pump; 3,000 GPM, Powered by Cummins NT4000C1 Six-Cylinder Diesel Engine

International Computer Power Model RU100K633-HH-AB-MB-RA Uninterruptible Power Supply (Roto UPS); S/N 9019, 480-Volt, 130 Amps, 3-Phase, 125 HP, 1,800 RPM, Generator; 100 KVA, 60 KW, Inverter; 500-Volt, 200 Amps, w/ Yaskawa GPD-515/G5 Controls

SEE PHOTO

## TRANSFORMERS / SWITCHGEAR / PLC

(4) 1,000 KVA Howard Industries & Ermco Transformers; S/Ns HI5924654906, HI5623984905 & A0508123336 (New 2005)

SEE PHOTO

7-Section Cutler - Hammer VACCLAD-W Metal-Clad Switchgear Station; Each Section w/ Type VC-W Switchgear, Unit Rated at 60 Hz, 15 KV Max Voltage, 36 KV Power Frequency, 95 KV - 4 WV, Main Buss Rating at 1,200, 62 / 37 KA Peak RMS, w/ FP-5000 Feeder Protection Controls (New 2010)

SEE PHOTO

Reliance Electric 460-Volt Electric Enclosure; S.O. #ITT-848378

Approx. (100) Siemens & CTI PLC Printed Circuit Boards (New in Boxes)

General Electric AKD-8 Switchgear with (9) Low Voltage Power Circuit Breakers

(2) GE Model N3iR4B2A4F1 Dry Type Transformer Rated at 2,500/3,333 KVA

(2) Virginia Transformer Co. 600 AMP HV Switches

(2) 2,000 AMP Square D Switch Board Cabinets

## BRIDGE CRANES

3 Ton x 40' Span Demag Single Girder Bridge Crane w/ Underslung Cable Hoist

SEE PHOTO

3,000 Lb. x 25' & 2,000 Lb. x 20' Single Girder Bridge Cranes

## ROBOTS

(4) Kuka Model KC Robots; Multi Axis, with Pneumatic Glass Positioning Fixture, Model KRC2 Robotic Controller, Safety Enclosure

## TESTING EQUIPMENT

Raytek Laser Scanning Pyrometer

Land Laser Scanning Pyrometer

Pasan Model CH2000 Measuring System; 4' x 8' Air Table, BYK Gardner Haze - Gard Plus Coating Tester

Gardner Model Haze-Gard Portable Glass Coating Tester

American Instrument Complete Humidity Temperature Apparatus; Honeywell Chart Recorder & Micro-Pro 1000 Controls

Blue M Model 2010-C-3 Electric Lab Oven; S/N FU-2574, to 1,800 Degrees

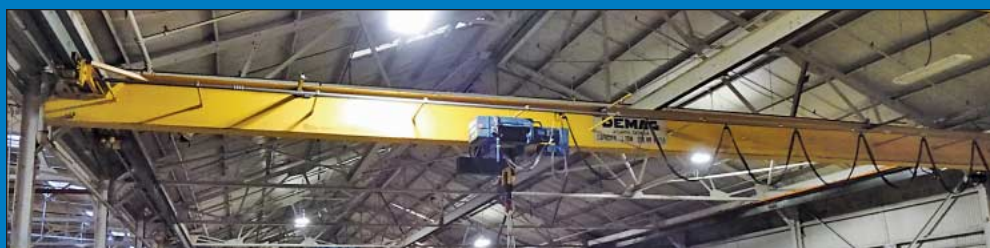
Other Testing Equipment Consisting of; Century Visual Stain Tester, Striagram Flow Carea Tester, Densimeter Tester, Rotap Sieve Shaker, Lapmaster Model 12 Lapping Machine, Tempmaster Lab Oven, Fischer Scientific & Thermo Lab Scales, Fume Hood, Lab Glass & Other Items



750 KW Caterpillar Model 3412 Generator



International Computer Power Model RU100K633-HH-AB-MB-RA Uninterruptible Power Supply (Roto UPS)



3 Ton x 40' Span Demag Single Girder Bridge Crane w/ Underslung Cable Hoist



(4) 1,000 KVA Howard Industries & Ermco Transformers



Large Blower Units



(2) 75 HP Atlas Copco Model GA75+ Air Compressor



7-Section Cutler - Hammer VACCLAD-W Metal-Clad Switchgear Station

NEW  
2010





# WEDNESDAY, JANUARY 18TH



21" X 156" Leblond / Makino Servo Shift Toolroom Lathe



21" X 218" Leblond Engine Lathe



26" X 160" Samstar Model 26160 Engine Lathe



1 1/2 HP Bridgeport Variable Speed Vertical Mill



26" DoAll Model 2618-30 Vertical Band Saw



Various Welders by Miller & Lincoln



Rigid 1224 Pipe Threader and 40 Ton Scotchman Ironworker

## TOOLROOM MACHINERY

**26" X 160" Samstar Model 26160 Engine Lathe;** S/N 07296, 5" Dia. Thru Spindle Opening, 4-Jaw Chuck, Motorized Cross Slide, Adj., Tailstock, Steady Rest, 1,100 RPM **SEE PHOTO**

**21" X 156" Leblond / Makino Servo Shift Toolroom Lathe;** S/N 15E-559, 3" Dia. Thru Spindle Opening, 4-Jaw Chuck, Cross Slide, Adj. Tailstock, Steady Rest, 25 - 1,000 RPM **SEE PHOTO**

**17" X 144" Leblond Regal Toolroom Lathe;** 2" Dia. Thru Spindle Opening, 3-Jaw Chuck w/ Cross Slide, Adj. Tailstock, Steady Rest

**21" X 218" Leblond Engine Lathe;** 2" Dia. Thru Spindle Opening, 4-Jaw Chuck, Cross Slide, Adj., Tailstock, Steady Rest **SEE PHOTO**

**24" X 200" Lodge & Shipley Model 24 Engine Lathe;** S/N 23183, 4" Dia. Thru Spindle Opening, 4-Jaw Chuck, Cross Slide, Adj. Tailstock, Steady Rest

**1-1/2 HP Bridgeport Variable Speed Vertical Mill;** S/N 92300, 9" x 42" T-Slotted Table, AcuRite 2-Axis DRO, Spindle, Power Table and Knee Feed **SEE PHOTO**

**1 HP Bridgeport Eight-Speed Vertical Mill;** S/N 86003, 9" x 42" T-Slotted Table, AcuRite 2-Axis DRO, Spindle, Power Table, Knee Feed

**24" x 132" Premier Engine Lathe w/ 3-Jaw Chuck**

**Cincinnati #4 Horizontal Mill;** S/N 4A4P1J166, 16" x 60" T-Slotted Table, w/ Vertical Head

**4' Arm x 13" Dia. Column Fosdick Radial Drill;** Wit-Slot Base, Box Table, Vise

**16" DoAll Model DBW-15 Vertical Band Saw;** S/N 268-68452, 16" Throat, 24" x 24" Table (New 1968)

**26" DoAll Model 2618-30 Vertical Band Saw;** S/N 198-68348, 26" Throat, Approx. 6' x 6' Table (1968) **SEE PHOTO**

**20" Powermatic Model 1200 Drill Press;** S/N 9420V209, w/ T-Slotted Table

**13" x 20" Kalamazoo Model 13AW Horizontal Band Saw;** S/N N3185

**Large Quantity of Perishable Tooling, Machine Accessories, Machine Vises, Toolholders, Grinders, Belt Sanders, Tooling Cabinets**

## WOODWORKING/ CRATING MATERIAL

**Woodworking & Crating Material Consisting of;** 16" Radial Saw w/ Infeed & Outfeed Conveyor & Dust Collector, Oliver Model 1940H Swing Saw w/ Feed Conveyor, Murphy-Rodgers Cyclone Type Dust Collector, Large Quantity of Crating Wood, Cardboard & Packaging Materials

## MISC. MACHINERY

**Misc. Machinery Consisting of;** Hi-Vac Model 320 Vacuum System; S/N HV-3789, Chamberlin's Model Vacu-Blast Shot Blast Cabinet, 6" Double End Pedestal Mounted

Grinder, 4" Belt Sander, H-Frame Press, 16" Abrasive Saw, Ridgid Model 1224 Pipe Threader, Toledo Model 999 Pipe Threader, Sioux Steam Cleaner w/ Spray Gun, 16" Delta Drill Press, Dake Model 1-1/2D1 Bench Type Arbor Press, 1,500 PSI Mi-T-M Steam Cleaner

## FABRICATING MACHINERY / WELDERS

**225 Amp Miller Model Bobcat 225 Gas Powered Welder / Generator**

**225 Amp Lincoln Model Weldan Power 225 Gas Powered Welder**

**350 Amp Miller Model Syncrowave 350 Welder**

**200 Amp Miller Model SRAC-3 Welder;** S/N E55474

**225 Amp Miller Model Thunderbolt AC Welder**

**Thermal Dynamics Model Cutmaster 39 Plasma Cutter**

**40 Ton Scotchman Model 4014C Ironworker;** S/N 6879FF297

**16 Ga. x 8' Chicago Leaf Brake (4) H.D. Welding Tables w/ Vises**

## MOBILE EQUIPMENT

**2008 Volvo Model L60F Articulated Rubber Tire Wheel Loader;** S/N VCEOL60FC00061697, Enclosed Cab **SEE PHOTO**

**Bobcat Model 853 Hard Tire Skid Steer Loader;** S/N 510126326, Bucket Attachment



Maintenance Crib Room w/150-Sections Steel Shelving



(300) Motors Ranging from 350 HP to 5 HP



# ON THE FORMER PREMISES OF HERITAGE GLASS, LLC



2008 Volvo Model L60F Articulated Rubber Tire Wheel Loader



(2) Bobcat Model 853 and 743 Hard Tire Skid Steer Loaders



Genie Model Z45/22 Electric Telescoping Boom Lift

**Bobcat Model 743 Hard Tire Skid Steer Loader;** S/N 5019M27017, Bucket Attachment

**850 Lb. Skyjack Model SJII 4626 Electric Scissor Lift;** 42" Wide x 8' Long Platform **SEE PHOTO**

**Genie Model Z45/22 Electric Telescoping Boom Lift;** 45' Max Lift Height **SEE PHOTO**

**John Deere Model 3T80J Tractor;** S/N CH3043D210004, w/ Canopy, Woods Model Heritage RD60 Mowing Attachment **SEE PHOTO**

**Tennant Model 6600 LP Gas Sit Down Rider Type Floor Machine;** S/N 6600-25525 **SEE PHOTO**

**(8) Yamaha / Club Car / EZ Go Electric Golf Carts**

**2011 Club Car Model Carryall 1 Electric Dump Body Cart;** S/N FD1141239463, Built In Charger, 1,310 Hours

**Club Car Gas Powered Golf Cart;** S/N AG1128-205611, Canopy

**(5) Crown Model TR-200 Electric Tuggers**

**International Model 81900 Truck;** S/N 01HTLKTIVR4FHA38122, Tandem Axle with Approx. 16' Long Dump Bed (1985) **SEE PHOTO**

## LIFT TRUCKS

**11,000 Lb. Yale Model GLC120MGNGA LP Gas Cushion Tire Lift Truck;** S/N B818N0170X, 3-Stage Mast, Side Shift (New 2000)

**8,000 Lb. Yale Model GLC080LJN-GAE088 LP Gas Cushion Tire Lift Truck;** S/N G818V01947A, 3-Stage Mast, Side Shift

**7,000 Lb. Hyster Model S70FT LP Gas Cushion Tire Lift Truck;** S/N F187V16618H, 2-Stage Mast, 122" Lift, 83" Mast, Fingertip Controls (2010)

**5,000 Lb. Hyster Model S50FT LP Gas Cushion Tire Lift Truck;** S/N F187V17751J, 2-Stage Mast, 129" Lift, 83" Mast, Side Shift, Fingertip Controls (2012)

**6,000 Lb. Yale Model 6PP060 Diesel Power Cushion Tire Lift Truck;** S/N N513573, 2-Stage Mast, Side Shift, 83" Mast

**6,000 Lb. Mitsubishi Model FD30 Diesel Power Solid Pneumatic Tire Lift Truck;** S/N AF140-30001, 3-Stage Mast, Side Shift, 83" Mast, Cab Enclosed

**4,000 Lb. Nissan Model PJ02A25V Gasoline Power Solid Pneumatic Tire Lift Truck;** S/N PJ02-9H093, 3,074 Hours

**(2) 5,000 Lb. Yale Model GLP050RGNUA LP Gas Cushion Tire Lift Trucks;** S/N E177B24134 and N852502, Side Shift, 72" Forks

**8,000 Lb. Yale LP Gas Lift Truck;** SN 0549195 \*\*Out of Service\*\*

**(2) 5,000 Lb. Clark LP Gas Lift Trucks;** S/N 685-125-4451 and 685-0242-9150 \*\*Out of Service\*\*

## FORKLIFT MAINTENANCE LIFT

**20,000 Lb. Handling Specialty Model HPU-C21-15-110 Hydraulic Forklift Repair Lift;** S/N HPUXF0047BN, w/ Controls **SEE PHOTO**

## PACKAGING EQUIPMENT

**(2) Orion Model M55/17GS Bridge Mounted Spiral Wrappers;** 10' Dia. x 8' High Wrap Capacity, Controls (2002)

**52" Wide Seybold Guillotine Type Paper Cutter;** S/N 2844, Programmable Back Gauge, C&P Microsystems Microcut Basic Controls

**10,000 Lb. X 1 Lb. Capacity Mettler Toledo Model P Plus Scale,** with Approx. 4' Wide X 12' Long Platform

## SHOP EQUIPMENT

**Shop Equipment Consisting of;** (12) Port-A-Cool Coolers of Various Sizes, (20) 1-2-3 Yard Dump Hoppers, (200) Structural Steel Glass Storage Racks, (10) Signode Banding Sets, (50) Warehouse Trucks, (10) Portable Steps, Workbenches, Steel Racks, Pallet Racks, Lockers, Cafeteria Tables & Chairs, Office Furniture & Conveyor, Large Quantity of Electric & Pneumatic Hand Tools Including Mag Base Drills, Milwaukee & Dewalt Electric Tools, Senco Pneumatic Tools, Pipe Wrenches, Porta Band Saws & Many Other Items

## MAINTENANCE & SUPPLY CRIBS

**Maintenance and Supply Crib Consisting of Room w/ 150-Sections Steel Shelving Containing:** Electrical & Electric Motors, Wire, Electric & Plumbing Fittings, Switches, Hydraulic Fittings & Hoses, Bearings, Pullies, Gears, Abrasives, Safety Supplies, Brass Fittings, Roto-Bins w/ Hardware, Welding Supplies, V-Belts, Gauges, Filters, 12-Sections Pigeon Hole Racks Loaded w/ Hardware

## Electric Motor Supply Room

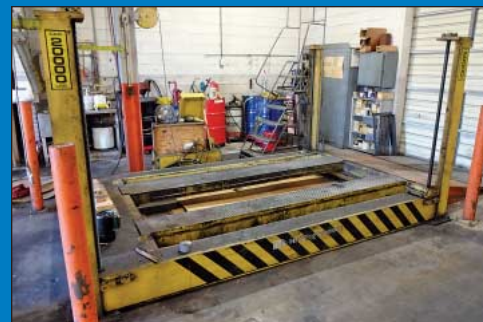
**Containing:** Approx. (300) Motors Ranging from 350 HP to 5 HP, Supplies to Repair Electric Motors, Motor Testing Equipment & Other Related Items

## OFFICE EQUIPMENT

OCE Model 010001/TDS400 Plotter, OCE Model 010002/TDS400 Plotter, Xerox Model 3001 Plotter, HP Model Design Jet 500 Plotter, Office Equipment and Furniture Including HP 8150N Laser Jets, Bizhub C250 Copier, HP Pro Computers, Lexmart T640 Printer, HP MFG127 Copier and Other Related Items



(13) Lift Trucks Up to 11,000 Lb. by Yale, Nissan, Mitsubishi



20,000 Lb. Handling Specialty Model HPU-C21-15-110 Hydraulic Forklift Repair Lift



International Model 81900 Truck

## WEBCAST BIDDER INSTRUCTIONS

> All Internet bidders must register for this auction at [www.bidspotter.com](http://www.bidspotter.com) at least 48-Hours Prior to the Sale Date, **if you do not you will not be approved.**

> All Internet bidders must Post a Deposit of Approx. 25% of Your Planned Spending Budget or \$5,000.00 Minimum with Cincinnati Industrial Auctioneers in Order to be approved to Bid. Those who do Not Post the Deposit Will Not be Approved. **Period.**

**BidSpotter.com**



John Deere Model 3T80J Tractor



Tennant Model 6600 LP Gas Sit Down Rider Type Floor Machine



850 Lb. Skyjack Model SJII 4626 Electric Scissor Lift



2011 Club Car and (8) Other Electric Golf Carts



# PUBLIC AUCTION

Glass Manufacturing Plant Closed  
and all Machinery and Equipment is being sold

## ON THE FORMER PREMISES OF HERITAGE GLASS, LLC

1450 Lincoln St. – Kingsport, TN 37660

**SALE DATE:**  
**Wednesday, January 18th**  
**STARTING: 9:00 AM**

**INSPECTION:**  
Tuesday, January 17th  
10:00 AM to 4:00 PM



**CINCINNATI  
INDUSTRIAL  
AUCTIONEERS**  
auctioneers | appraisers | since 1961

Contact Information  
2020 Dunlap St.  
Cincinnati, Ohio 45214  
Phone 513-241-9701  
Fax 513-241-6760  
[www.cia-auction.com](http://www.cia-auction.com)



450,000 Sq. Ft. Glass Manufacturing Facility

**FIRST CLASS MAIL!**

PRE-SORT  
FIRST CLASS  
U.S. POSTAGE  
**PAID**  
CINCINNATI, OHIO  
PERMIT NO. 3593



### Important Mail

TO BE DIRECTED TO THE ATTENTION  
OF EXECUTIVE PERSONNEL

**WEDNESDAY, JANUARY 18TH**

# PUBLIC AUCTION

Glass Manufacturing Plant Closed and all  
Machinery and Equipment is being sold

## ON THE FORMER PREMISES OF HERITAGE GLASS, LLC

1450 Lincoln St. – Kingsport, TN 37660

### IMPORTANT NOTICE:

Although information has been obtained from sources deemed reliable, the auctioneer makes no warranty or guarantee, expressed or implied, as to the accuracy of the information herein contained. It is for this reason that buyers should avail themselves of the opportunity to make inspection prior to the sale. This brochure is intended to provide general information of the equipment being offered and is subject to errors, omissions, additions or deletions. Please check with the Auctioneer's Office for a final listing. Items offered may or may not necessarily be sold as described and/or photographed in this brochure. All items must be removed from the premises by February 17th, 2017.

MAIL BIDS ACCEPTED WITH A 25% DEPOSIT

### DIRECTIONS

From the I-26 and I-81 Junction Proceed West on I-26. Continue 4 Miles on I-26 West to Exit 4 for TN-93. Turn Right onto TN-93 North, Proceed 2.1 Miles to Left Turn onto Lincoln St. Continue 1.3 Miles on Lincoln St to Sale Site on Left. Watch for Auction Parking and Auction Signs.

### AUCTIONEERS

Cincinnati Industrial Auctioneers, Inc. –  
License No. 00002225

Jeffrey L. Luggen – License No. 00001758



### TERMS OF SALE

All equipment described herein will be sold "as is", "where is" to the highest bidder or bidders for cash in accordance with our regular terms and conditions of sale. Unless other satisfactory arrangements are made, a **25% deposit** in cash, certified or cashier's check payable to Cincinnati Industrial Auctioneers, Inc., **is required on all purchases.** Firm and personal checks accepted only if accompanied by a letter from your bank guaranteeing your funds. All sales are subject to state and/or local taxes unless a signed exemption form is presented at the time of purchase. **All balances are due at the conclusion of the sale.** No merchandise may be removed while the sale is in progress. **All bidders must comply with our Standard Terms of Sale,** copies of which will be available at the sale site or can be obtained from our website. All items must be removed from the premises by February 17th, 2017.

**15% ONSITE BUYER'S PREMIUM**  
**18% ONLINE BUYER'S PREMIUM**



Sale Under The Management Of

**CINCINNATI INDUSTRIAL AUCTIONEERS**

auctioneers | appraisers | since 1961 | [cia-auction.com](http://cia-auction.com) | [info@cia-auction.com](mailto:info@cia-auction.com)  
2020 Dunlap St., Cincinnati, Ohio 45214 Phone 513-241-9701 Fax 513-241-6760