

HUGE TWO-DAY AUCTION OVER 1,000 LOTS, 776 ACRE CEMENT PRODUCTION FACILITY INCLUDING CEMENT PRODUCTION MACHINERY, PRE-FAB STEEL BUILDINGS, COPPER WIRING, MOTORS, SWITCHGEAR, TRANSFORMERS, REPAIR PARTS AND SUPPORT EQUIPMENT

Bidspotter.com™
To Become a Qualified Bidder on the Internet
See Instructions on Page 2

PUBLIC AUCTION

Plant Closed



LAFARGE MIDWEST, INC.

1400 Cement Road – Fredonia, Kansas 66736

100 Miles East of Wichita / 120 Miles North of Tulsa

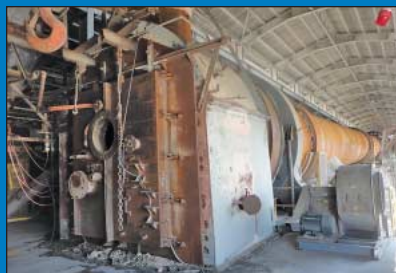
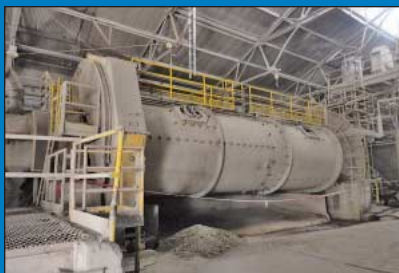
SALE DATE: WEDNESDAY, SEPTEMBER 25TH AND THURSDAY, SEPTEMBER 26TH, STARTING AT 9:00 AM BOTH DAYS

INSPECTION: MONDAY, SEPTEMBER 23RD AND TUESDAY, SEPTEMBER 24TH FROM 10:00 AM TO 4:00 PM OR BY APPOINTMENT.

HUGE SCRAP OPPORTUNITY

- Approx. 6,000 Ton Steel Scrap
- Huge Quantities of Heavy Electrical Wiring, Transformers and Switchgear
- Pre Fab Steel Building Structures Likely to be sold for Scrap

Scrap Buyers will be allowed to process scrap steel on site and use existing rail spur to load rail cars for shipment.



DAY ONE

- Processing Machinery
- Steel Buildings
- Parts Stores Room
- Rolling Stock
- Toolroom
- Support Equipment
- Scrap

DAY TWO

- Electrical Equipment
- Wire
- Motors
- Support Equipment
- Scrap

Large amounts of Scrap, Shop and Support Equipment will be sold both days. See auction catalog on website for lot listings for each day.



CINCINNATI INDUSTRIAL AUCTIONEERS

auctioneers | appraisers | since 1961

Sale Under The Management Of
Cincinnati Industrial Auctioneers
2020 Dunlap St., Cincinnati, Ohio 45214
Phone 513-241-9701 Fax 513-241-6760
cia-auction.com | info@cia-auction.com



biditup.com • Phone 818-508-7034



SEPTEMBER 25TH & 26TH



Pennsylvania Size 72" X 60" Hammer Mill Primary Quarry Crusher



Nordberg 9'6" Dia. X 34' L Steel Drum Two-Compartment Raw Mill



Nordberg 9' Dia. X 34' L Steel Drum Two-Compartment Finish Mill



Partial View Large Quantity of Aggregate Conveyors To 60" Wide and 310' Long

ONSITE ATTENDEES AND REMOVAL PERSONNEL

Anyone who plans on entering the premises of Lafarge will be required to adhere to the safety policies which include wearing hard hats, steel toe boots and safety glasses, being over the age of 18 and execution of a hold harmless agreement. Other requirements may be presented to you upon arrival.



Pennsylvania Size 18" X 68" Hammer Mill Secondary Quarry Crusher

QUARRY CRUSHERS

Pennsylvania Size 72" X 60"

Hammer Mill Primary Quarry

Crusher; S/N 2213, Capacity 475 TPH, 800 HP General Electric Motor, Universal Engineering Model 60 X 22 Bar C 11-1/2 Wobbler Feeder, S/N 424 X 365, Faulk Enclosed Gear Drive Model 100FC2A an 30.19 Ratio, Louis Allis 30 HP Type TR Flex Torque Motor Reduces Limestone to a 6" Minus

SEE PHOTO

> 72" X 72" 30 HP Micropul 81-5-12-TR-C Dust Collector with Syntrol Vibratory System, 25' X 25' Steel Fabricated Cooling Hopper

Pennsylvania Size 18" X 68"

Hammer Mill Secondary Quarry

Crusher; S/N N/A, Capacity 475 TPH, 600 HP General Electric Custom 8000 Motor, Allis Chalmers Model SH 6' X 20' Riplo-Flo Vibratory Screens, Reduces Limestone to 3/4"

SEE PHOTO

> 54" X 54" FMC Dust Collector with Trans-Flo Model 2,000 HP

Valving System, 20 HP Blower, Micropal 49-S-12-TR-C

ROTARY KILNS

11' Dia. X 425' Long (K-2) E.L.

Smith Rotary Kiln System; 350 HP

Model 5KF511N427P Main Drive Motor with Falk Gear Reducer, Detroit Diesel Auxiliary Drive Motor, Outer Shell Ranges From 7/8" to 3" Thick Steel, 400 HP I.D. Fan with Zarn Industries Fan, S/N 366E, Mid-Kiln Dust Collector with Conveyor, Kopper Electrostatic Precipitator with (4) Augers at Discharge End

SEE PHOTO

11'-3" Dia. Discharge / 10' Dia.

Feed End X 335' Long (K-1) Vulcan

Rotary Kiln System; 350 HP Main

Drive Motor with Falk Gear Reducer,

Detroit Diesel Auxiliary Back-Up Drive

Motor, Outer Steel Shell Rages From 3/4"

to 3" Thick Steel, 300 HP Louis Allis I.D.

Fan Motor, with (4) 64 KVA Transformers

, (5) Turning Roll Piers, (2) 15' Wide Steel

Mid-Kiln Hopper with 24" Wide X 20'

Long Conveyor and (1) 24" Wide X 190'

Long Rubber Belt Incline Conveyor

SEE PHOTO

Approx. 20 Tons of Stainless Steel (20% Chrome, 9.5% Nickel) and 60 Tons of Steel Chains in each Kiln

Approx. (55) Pallets of New Fire and Refractory Brick From Manufactures Refratechnik, RHI, Unifrax & Magnesita

(2) Fire Brick Insertion Fixtures For Rotary Kilns

COAL MILLS AND RELATED

C.E. Raymond Model 593 Coal Mill; S/N 73145, 250 HP at 900 RPM, Rated At 10 STPH, with Exhauster Fan

SEE PHOTO

C.E. Raymond Model 493 Coal Mill; S/N 55228, 100 HP at 1,200 RPM, Rated At 7 STPH

SEE PHOTO

100 HP C.E. Raymond Coal Dust Exhauster Fan

DAY ONE

- Processing Machinery
- Steel Buildings
- Parts Stores Room
- Support Equipment
- Rolling Stock
- Toolroom
- Scrap

DAY TWO

- Electrical Equipment
- Wire
- Motors
- Support Equipment
- Scrap

Large amounts of Scrap, Shop and Support Equipment will be sold both days.

See auction catalog on website for lot listings for each day.

HUGE SCRAP OPPORTUNITY

- Approx. 6,000 Ton Steel Scrap
- Huge Quantities of Heavy Electrical Wiring, Transformers and Switchgear
- Pre Fab Steel Building Structures Likely to be sold for Scrap

Scrap Buyers will be allowed to process scrap steel on site and use existing rail spur to load rail cars for shipment.

WEBCAST BIDDER INSTRUCTIONS

- > All Internet bidders must register for this auction at www.bidspotter.com at least 48-Hours Prior to the Sale Date, **if you do not you will not be approved.**
- > All Internet bidders must Post a Deposit of Approx. 25% of Your Planned Spending Budget or \$10,000.00 Minimum with Cincinnati Industrial Auctioneers in Order to be approved to Bid. Those who do Not Post the Deposit Will Not be Approved. **Period.**



- > There is a 18% Buyer's Premium in Effect for All Online Purchases.
- > We Highly Recommend that Potential Buyers Attend this Auction & Bid Live Onsite. This will give you the Ability to Inspect the Items & Fully Appreciate Their Condition, Along with Saving You 3% of the Buyer's Premium.

No Last Minute Registrations will be accepted. Make Sure to Register & Post Your Deposit No Later than 48-Hours Prior to the Start of the Auction.



11' Dia. X 425' Long (K-2) F.L. Smith Rotary Kiln System



11'-3" Dia. Discharge / 10' Dia. Feed End X 335' Long (K-1) Vulcan Rotary Kiln System



Hercules (Bradley) Model 6000 Roller Screen Type Pulverizer

(2) Merrick Coal Mill In-Line Weight Belt Systems
(3) Raymond Model 493 Roll Assemblies

RAW MATERIAL MILLING SYSTEMS

Nordberg 9'6" Dia. X 34' L Steel Drum Two-Compartment Raw Mill; 1,500 HP General Electric Drive Motor at 180 RPM, Rated at 99 STPH, Equipped with DSM Screen System, (2) 200 HP Wilfley Slurry HO Pumps (Size 4" X 8") Steel Drum is Approx. 1" Thick, This System Mixes Crushed Limestone, Sand, Clay and Iron Ore to Produce Remont Slurry, Mill Liners are Included **SEE PHOTO**

Nordberg 9' Dia. X 34' L Steel Drum Two-Compartment Finish Mill; 1,500 HP General Electric Motor at 180 RPM, Rated at 335 STPH, (7) 16" Studerent Separator with 150 HP Drive Motor, (7) 75 HP F.L. Smith 6'6" X 17'7" Cement Coolers, (7) 150 HP Fuller-Kenyon Dry Remant Pump**Note Main Gear Train and Pinion Have Been Removed** **SEE PHOTO**

SECONDARY FINISHING MILLS AND RELATED

Hercules (Bradley) Model 6000 Roller Screen Type Pulverizer; 300 HP Motor at 392 RPM, Rated 30-35 TPH

SEE PHOTO

(2) 6' Dia. X 20' L Allis-Chalmers Finish Mills; 400 HP Drive Motors at 180 RPM

7' Dia. X 22' L Traylor Finish Mill; 450 HP Drive Motor at 180 RPM

16' Studerent 100 HP Separation System

75 HP F.L. Smith 6'6" X 17'7" Cement Cooler

Approx. 95 Tons of Steel Media Balls Used in Processing Mills, Size Range From 1/2" to 3"

4-Stage Ball Separator/Screeners; Side Dump Hopper with 15' L Rotating Interchangeable 4-Station Screener **Side of K2**

INLINE MAGNETIC SEPARATORS AND OTHER

Eriez Model SE1300 Rotary Discharge Suspended Electromagnet; 36" L X 48" W Magnetic Plate, 50" Belt, 24" Drums

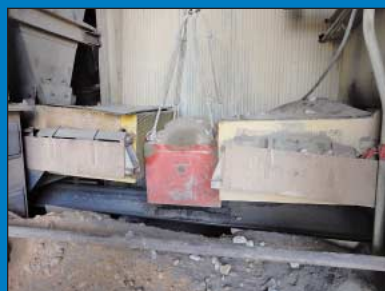
Eriez Model SE750 Rotary Discharge Suspended Electromagnet; 40" L X 48" W Magnetic Plate, 3 HP, 12" Drums

Dings Model 28384 Suspended Magnetic Separator; S/N 20RMR60

(7) **Eriez Vibrating Above Conveyor Belt Feeders;** 12" X 24" Dis-Charge Chutes with Model NO. H12-VTH-460 Controllers and Allen Bradley Power Flex Module, Variable Speed

INLINE METAL DETECTOR

Sci-Ironics Model 1080 Metal Detection System; S/N 1235, 27" H X 42" W Window, 8" X 36" Generator Coil



Partial View Inline Scale, Metal Detector and Magnetic Separator Systems



C.E. Raymond Model 593 Coal Mill



C.E. Raymond Model 493 Coal Mill



SEPTEMBER 25TH & 26TH



Partial View Large Quantity of Aggregate Conveyors To 60" Wide and 310' Long



Clinker Storage Truck Cement Loading System



Copper Electrostatic Precipitator for K-2



(2) 100 HP Barrow Industries Cooling Fans



(2) 23,500 Gal. Steel Fuel Storage Tanks

AGGREGATE CONVEYOR SYSTEMS

30" W X 310' L Rubber Belt Incline Conveyor; Plylok 2-220 RMA Grade II Belting, Rated at 100 STPH, 29' Lift/Drop, Speed 251 FPM, 40 HP

36" W X 290' L Rubber Belt Incline Conveyor; Georgia Duck Plylok Supreme 3-450 RAM Grade II, 3.16" X 1/16" Belting, Rated at 600 STPH, 78' Lift/Drop, Speed 284 FPM, 125 HP Drive Motor, Take-Up System

36" W X 260' L Rubber Belt Incline Conveyor; Georgia Duck Plylok 3-330 RMA Grade II 3/16" X 1/16" Belting, Rated at 600 STPH, 56' Lift/Drop, Speed 365 FPM, 100 HP Drive Motor, Take-Up System

(1) 30" W X 145' L and (1) 30" W X 93' L Rubber Belt Elevated Tube Conveyors; Plylok 2-220 RMA Grade II Belting, Rated at 600 STPH, Speed 653 and 685 FPM, 50 HP and 15 HP

36" W X 103' L Rubber Belt Incline Conveyor; Georgia Duck Plylok 330 RMA Grade II Belting, Rated at 200 STPH, Speed 312 FPM, 30 HP, 18' Lift/Drop, Take-Up System

60" W X 46' L Rubber Belt Horizontal Conveyor; Plylok Supreme 3-600 RMA Grade II Belting, Rated at 600 STPH, Speed 228 FPM, 10 HP

****Various Add-ons Connected to Conveyor Not Included with the Sale of Conveyor. Some Systems Have Integrated Weighing Load Cells, See Website for Conveyor Dimensions and Specification at Lafarge ****

CLINKER COOLERS AND DUST COLLECTORS

6' Wide X 35' Long Dodge (No.1) Clinker Cooler; with Chain Drag System, Stainless Steel Grated Segmented Floor, (1) 250 HP, (2) 75 HP Fuller Cooling Fans and 15 HP Motors

SEE PHOTO

> (2) 12' X 12' Buell Steel Fabricated Bag House Type Dust Collectors with 200 HP Fan Motor

> (3) 50 HP Auxiliary Heat Exchanger Cooling Fans
7' Wide X 44' L Modified Fuller (No.2) Clinker Cooler; IKN Inlet, Incline Style with Walking Floor, Stainless Steel Grated Segmented Floor, 40 HP Motor, 50 HP Clinker, Breaker at Exit End, (2) Baron Industries 75 HP Series H30A Cooling Fans

SEE PHOTO

> (4) 10' X 12' Micro-Pul Steel Fabricated Bag House Type Dust Collectors with 400 HP Fan Motor
> (2) 100 HP Barron Ind. Cooling Fans

STAND ALONE MATERIAL LOADING HOPPERS

11' Wide X 15' High Steel Fabricated Aggregate Hopper with Dust Collector; (at Secondary to Tower) with Integrated 24" X 32' Belt Conveyor; 10 HP, 10' X 12' Plattco Electric Dust Collector, with Bachelor Controls (See AA), 24" Wide X 90' Long Incline Belt Conveyor

(3) 14' Wide Loading Hoppers System – (See BB Area)

> Ding Stationary Hanging Magnet; S/N 28384

> (3) 15' Long Horizontal Belt Conveyors

> (2) Syntrom Model V-51-D1 Magnetic Vibrators with Electric Controller (In RR West Hopper)

WASTE DUST TREATMENT SYSTEM

Waste Dust Treatment System Consisting of the Following Major Components; Davis Model 500-B Davis Pug Mill; S/N 1301-50, 40 HP Mixing Motor at 1,800 RPM, Transfer Screw Conveyor, DCL Model CFM155-14 Over Truck Mixer; S/N 9938102, DCL Model UN800EV0621WA1112 Truck Dispenser, Tank Connection Accumulation Hopper, All Components Housed in Elevated Drive Under Steel Frame Structure

STORAGE TANKS

(2) 23,500 Gal. Steel Fuel Storage Tanks; 10' Dia. X 40' L, with elevated Stands and (1) Common Electric Gas/Diesel Pump, Empty

SEE PHOTO

Tank and Pump Station Battery Consisting Of; (2) 12' Dia. X 15' H and (1) 12' Dia. X 25' H Steel Storage Tanks, (7) 10 HP Circulation Pumps and Related Pipes

RAILCAR SHAKER SYSTEM

Hewitt Robbins Model HDV Railcar Shaker System; S/N KD-1807, Robbins & Meyers Model F3 A/Z Twin Hook Car Shakeout Hoists; S/N 41889SR1, (2) 1 Ton Cable Hoists on a 15' X 5' Free Standing H-Frame Steel Structure

SEE PHOTO

AIR COMPRESSORS AND VACUUM PUMPS

Gardner Denver D190 Portable Air Compressor Model D0190JD7A; S/N 1904146, 190 CFM, 4-Cylinder John Deere Model 4239DF Diesel Engine; S/N CD4239D831116, 5,235 Hours

Gardner Denver Model D0190PR8A Portable Air Compressor; Perkins 4.236 Engine, 190 CPM, 540 Hours
Sullair 185Q Portable Air Compressor Model



Hewitt Robbins Model HDV Railcar Shaker System



(7) Fuller Low Pressure Air Compressors From 50 HP to 200 HP



40" X 204" American Pacemaker Style J-6 Geared Head Engine Lathe



24" X 148" Leblond Regal Geared Head Engine Lathe



(3) Mustang Compact Loader Skid Steers

185DP02WPE; S/N 004-89000DHE, 4-Cylinder Perkins Diesel Engine, 4,747 Hours

200 HP Fuller Company Size C-200 Low Pressure Air Compressor; S/N 81-20427-103, 47 PSIG

150 HP Fuller Company Size C-200 Low Pressure Air Compressor; S/N 74-21303-103-1, 47 PSIG

(2) 75 HP Fuller Company Size C-120 Low Pressure Air Compressors; S/N 73-20479-101-1 and 36672-R, 47 PSIG

50 HP Fuller Company Size C-100 Low Pressure Air Compressor; S/N 16141, 47 PSIG

Fuller Company Size C-200 Low Pressure Air Compressor; S/N 750, 47 PSIG, *Rebuild, No Motor*

Fuller Company Size C-250 Low Pressure Air Compressor; S/N 968D, 47 PSIG *No Motor, Compressor Damaged*

(3) 2 HP Gast Model 7HDD-10-M853X Vacuum Pumps

CONSTRUCTION EQUIPMENT AND RELATED

1996 Volvo Model BM-A40 Off Road Dump Truck; S/N A40V110K, 295 kW Engine Net Power, 3-Speed Automatic Transmission, 10,353 **Not In Service**

SEE PHOTO

Mustang Model 2032 Compact Loader Skid Steer; S/N SL04E000512, 3,245 Hours, 4' Bucket, 1,250 Lb. Rated Capacity, 36 HP Diesel Engine (**New 2004**)

(2) Mustang Model 2026 Compact Loader Skid Steers; S/N MMC02026A00002027, 411 Hours, MMC02026J00001178, 1,505 Hours, 4' Bucket, 1,050 Lb. Rated Capacity, 35 HP Diesel Engine (**New 2009**)

SEE PHOTO

20,000 Lb. Magliner 75" X 30' All Aluminum Frame Portable Loading Lamp Model MV5208430; S/N 7-S1-3710

SEE PHOTO

Pressurized Truck Washing Station; 9'H X 17'W Truck Clearance, 70'L X 10'H Elevated Walkway with Front and Back Staircases, 10 HP Motor, Water Basin

(2) John Deere 4X2 Gas Powered Gators; 1,665 and 4,593 Hours

SEE PHOTO

Tennant Model 800 Gas Powered Sweeper; S/N 800-1326, 377 Hours

300 Gallon Turbo Turf Hydro Seeding Systems Gas Powered Sprayer; Honda GX240 Engine

Large Quantity of New Caterpillar Parts including Radial Seal Air Filters, Alternator, Spare Engine Parts, and Electrical Parts

Misc. Construction Related Equipment Consisting of;

(2) Lifting Technologies Fork Type Safety Baskets, 8,000 Lb. Caldwell Model FB-80 Extendable Arm Lift Truck Jib, 7-1/4 Cubic Yard Caterpillar Smooth and Tooth Edge Loader Buckets, Essick Model 120 Electric Mortar Mixer; S/N 82200314, 125 PSI Sanstorm Model ARW9D72 Sand Blast Pot, 72" Manual Dock Plate with Rite Hite Model VG-1044 Safe-T-Gate, 12' X 20' Steel Car Port, (6) Caterpillar and Volvo Used Tires

TRUCKS

1980 Ford LT-8000 Diesel Dual Tire Tandem Axle Vacuum Truck; VIN# U81DVV90345, 210 HP Diesel Engine, 6 Speed Transmission, GVWR 44,800, 39,260 Miles Showing, PTO System, Guzzler Model 3012 AE 92" Dia. X 88"L Tank, John Deere Model 6359T Motor Pump, 1,602 Hrs, Rockford Power Take-Off 3ISG, Assn. No. 4-24829

SEE PHOTO

1995 Ford F-Series Gas Single Axle Dual Tire Winch Truck; VIN# 1FDNF70J1TVA13123, 17,958 Miles Showing, 24,500 GVWR, PTO System, 5-Speed Transmission

1988 Ford F-Series Diesel Single-Axle Dump Truck; VIN# 1FDPK74P6JVA55965, 170,387 Miles, 16,000 Lb. Gross Weight, 10' Dump Bed

1995 Ford F700 Gas Single Axle Dual Tire Flat Bed Truck; VIN# 1FDXF70J7TVA11014, 39,887 Miles, 33,000 GVWR, 6-Speed Transmission, PTO System, 20' Bed, Air Brakes

SEE PHOTO

2001 Ford F150 XL Pick-Up Truck; VIN# 1FT2X17231KF24586, 58,815 Miles

2001 Chevrolet Silverado 1500 Pick-Up Truck; VIN# 2GCEC19W011225860, 74,512 Miles

TOOLROOM MACHINERY

40" X 204" American Pacemaker Style J-6 Geared Head Engine Lathe; S/N 75818158, 40" Swing X 204"

Length, 28" 4-Jaw Chuck, Spindle Speeds 7 to 600 RPM, 2 3/4" Thru Hole, 50 HP Motor, 18" Steady Rest

SEE PHOTO

24" X 148" Leblond Regal Geared Head Engine Lathe; S/N 3777, 24" Swing X 148" Length, 20" 4-Jaw Chuck, Spindle Speed 18 to 720 RPM, 2" Thru-Hole, Threads 2" to 64"

SEE PHOTO

10 HP Lagun Model FVA-3LA Vertical Milling Machine; S/N 38113657, 12" X 60" T-Slotted Table, Spindle Speeds to 1400 RPM, Cat 50 Tool Holder, Power Cross and Vertical Feed

9" X 18" Kalamazoo Model H9AW Horizontal Band Saw; S/N 6584

Large Quantity Various Machine Accessories and Tooling



1996 Volvo Model BM-A40 Off Road Dump Truck



1980 Ford LT-8000 Diesel Dual Tire Tandem Axle Vacuum Truck



1995 Ford F700 Gas Single Axle Dual Tire Flat Bed Truck



(2) John Deere 4X2 Gas Powered Gators



20,000 Lb. Magliner 75" X 30' All Aluminum Frame Portable Loading Lamp Model MV5208430



(3) Various Portable Air Compressors By Sullair and Gardner Denver



SEPTEMBER 25TH & 26TH

Electrical Components Including Wire, Switch Gear, Transformers and Related

**NEW
2008**



**NEW
2011**



STEEL STRUCTURES AND FREE-STANDING CRANE

20 Ton X 35' Span X 500' Long X 40' High Free-Standing Crane System and Building Structure; Reading Double Girder Top Running Overhead Crane, 6-Way Remote Control and Pendant, 12" X 24" I-Beam Up Rights ****Note:** No Sheeting on Building Related Wall, Call For Removal Instructions, Crane Over Kiln #2**

32' Wide X 60' Long Steel Fabricated Shop and Office Building

52' Wide X 140' Long X 30' High Steel Building Over Kiln + 1 Fire Chamber

60' Wide X 480' Long X 25' High Steel Building Over Raw / Finishing Mill Area

95' X 30' Three-Sided Panel Storage Building

28 X 25' Free Standing Lean-To

98" X 22' Two-Sided Corrugated Sided Storage Building

Other Steel Structures and Framework and Supports

****All Heavy Electrics and Wiring to Be Sold Separate of Building, Frameworks, and Conveyors, All Asbestos Siding and Roofing Materials will Be Removed By Lafarge****

COPPER WIRE

Approx. 75,000' of MC500 Grade Copper Wire Housed in Large Conduit, To Be Sold As Scrap in Large Lots

Huge Quantity of Other Various Sized and Grade Copper Wire, To Be Sold As Scrap in Large Lots

ELECTICAL EQUIPMENT

(7) Romac Model 308242 Switch Gears; 2,000 AMP, Each Equipped with GE Multiline 350 Feeder Protection System **Plant MCC Building (New 2004)**

5.5 KV PCI 6-Station Type PCL10502 Switch Gear System w/ 600 Amp PCI Power Factor Capacitor Disconnect Station **End of Mills Finish (New 2008)**

(2) Rockwell Automaton 900 KVAR Transformers; Part No. 33270028 Rated at 4160/2400 Volts (New 2011)

600 AMP Sunbelt Transformer Interrupter Switch; Rated at 5/15 KV Load, 40 KRMS (New 2011)

Allis-Chalmers Main Disconnect Switch Gear Equipped with General Electric 750 Feeder Management Relay; (2) Sub Switch Gears Each Equipped with Crompton Model Intergra 1540 PRO and (3) General Electric Relays **Substation**

General Electric Main Disconnect System Consisting of: (5) Switch Gears Equipped with Relays and an Overall General Electric 750 Feeder Management Relay **Substation**

PCI Type PCL10502 Metal Enclosed Switch Gear; Max Voltage 5 kV, Nominal Voltage 4.16 kV, 200 Continuous AMPs ** K2 Drive Room (New 2008)**

(20) Motor Control Center Panels by General Electric, Allen Bradley and Others to 25-Switch

Huge Quantity of Other Electric Equipment Including; Variable Speed Drives, Small and Large Disconnect Panels, Electrical Switchgear, Control Cabinets and Many Other Related Items, See Auction Catalog for Complete Listing

TRANSFORMERS

1,500 KVA GEC Alsthom Wet Type Transformer; S/N PZA-0048, HV 2,400, LV 480Y **K2 Precip. Room**

1,000 KVA Dry Type TransformerNext to K2 Cooler Stack****

(2) 900 KVA Rockwell Automation Dry Type Transformer; 4160/2400V, 95 kV

750 KVA General Electric Wet Type Transformer; S/N L244250, 2,400 - 480Y/277 Voltage Rating ** Between Coal Mills**

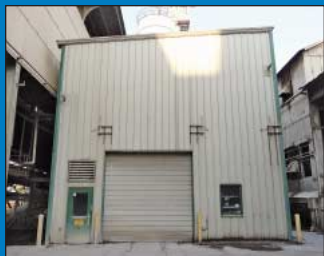
750 KVA Wet Type Transformer; 2300-480Y Voltage Rating **Raw Mill Room**

500 KVA General Electric Silicone Fluid Transformer; S/N M126666, 2400-480Y/277 Voltage Rating **Under K2 Beginning**

500 KVA Westinghouse Dry Type Transformer; S/N 092905-CB, 2,400 - 480Y/277 Voltage Rating **End of Old Finish Mills**

(50) Other Wet and Dry Type Transformers Ranging from 15 KVA to 300 KVA

Pre-Fab Steel Structures Including 20 Ton X 35' Span X 500' Long X 40' High Free-Standing Crane Structure



STORE ROOM / SPARE PARTS / MACHINERY COMPONENTS

Huge Quantity of Spare Parts and Surplus Machinery Components Consisting of; Bearings, Bearing Blocks, Motors, Copper Motor Windings, Machinery and Motor Housings, Brass Bushings, Shafts, Gears, Electrical Components, Diagnostic Sensors, Breakers, Fuses, Surplus Wire and Cable on Reels, Engine Parts, Truck and Forklift Repair Parts, Valves, Blowers Safety Equipment and Etc.

Conveyor Components Consisting of; Trough Conveyor Roll Sections (to 60"), New Rolls of conveyor Belting, Drive Motors, Variable Speed Drives

****See Website for Complete Listing Approx. \$1,700,000.00 Cost****

ELECTRIC MOTORS

Approx. (200) Surplus AC/DC Electric Motors to 800 HP; (1) 800 HP, (1) 600 HP, (1) 350 HP, (2) 300 HP, (1) 250, (4) 200 HP, (6) 150 HP, (1) 130 HP, (1) 125 HP, (19) 100 HP, (7) 75 HP, (8) 60 HP, (2) 50 HP, (3) 40 HP, (6) 30 HP, (2) 25 HP and large amount of motors under 25 HP

SHOP AND SUPPORT EQUIPMENT

9' W x 145' L X 112" H (Approx. Dimensions) L-Shaped Steel Constructed Galvanized Mezzanine System; (2) Staircases, 90" Under Clearance

(2) 1 Ton X 11' Arm 360 Degree Rotating Jib Cranes

20 Ton X Approx. 75' Span Toledo No. 385 Fish Belly Double Girder Overhead Bridge Crane (No Hoist)

5 Ton X Approx. 75' Single Girder Overhead Bridge Crane

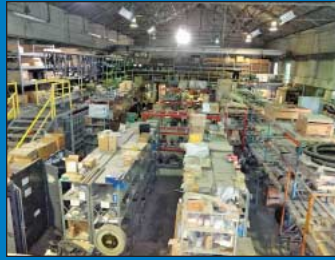
Motorola Model Radius GR500 25W Repeater Station w/ (40) Motorola Handsets

Large Quantity Raw Plate, Angle, Round Steel Stock

Lab and Test Equipment Consisting of; Oxford Model LZ3125NTS LabX-3000 X-Ray Machine; S/N LZ1837, X-Ray Tube Model TF2501; S/N 11487, 60,000 Lb. Capacity Forney Model LT-30-2 Core Sample Compression Tester w/ DRO, 6' X 56" X 45" 4-Door 21-Station Stainless Steel Curing Chamber, 5.5 Gal. American Brand Ultrasonic Cleaner, Boeeker 18 Kilowatt Dual Heater Autoclave; S/N 93-82-20, 350 PSI, NTL.BD.NO.83, Labconco Fumehood, Oxygen Bomb Calorimeter; S/N 1312, Item No. 1241, Nikon Microscope, Large Quantity of Lab Glassware, Crucibles and Related Items

Large Quantity Shop and Support Equipment Consisting of; Schumacher Battery Charger, Adjustable Arm Fork Type Jib, (20) Safety Cans, Numerous Flammable Storage Cabinets, Shop Fans, Two-Wheel Dollies, Hand and Power Tools, Two-Door Storage Cabinets, C-Clamps, Saw Horses, Portable Shop Scales, Shop Vacuums, Safety Cones, Heavy-Duty Hopper, Adjustable Beam Pallet Racks, Various Sized Pulleys, Fiberglass Ladders, Platform Ladders, 48" Pexto Style Sheet Roller, Banning Carts, Natural Gas Radiant Heaters, Upright Aerial Platform, (25) Sections Various Size and Style Pallet Rack, (24) 24" X 36" X 7' Adjustable Steel Shelving, Scaffolding, Aluminum Walk Boards, Steel Welding Tables, Acetylene Outfits, Welding Supplies, (3) Low Speed Descenders, Carts, Racks, Office Furniture And Many Other Related Items

\$1,700,000.00 Replacement Parts Inventory Including Electric Motors, Hydraulic, Pneumatic, Electrical and Mechanical Components



Large Quantity Shop and Support Equipment Including Dust Collectors, Pumps, Tanks, Lab, Facilitating Tools and Related



PUBLIC AUCTION

Plant Closed



LAFARGE MIDWEST, INC.

1400 Cement Road - Fredonia, Kansas 66736
100 Miles East of Wichita / 120 Miles North of Tulsa

SALE DATE:
Wednesday, Sept. 25th
Thursday, Sept. 26th
STARTING: 9:00 AM

INSPECTION:

Monday, September 23rd and Tuesday, September 24th
from 10:00 AM to 4:00 PM or by appointment.



**Cincinnati Industrial
Auctioneers Inc.**

2020 DUNLAP ST., CINCINNATI, OHIO 45214
PHONE (513) 241-9701 / FAX (513) 241-6760
WEBSITE: cia-auction.com



776 Acre Cement Production Facility

FIRST CLASS MAIL!

PRE-SORT
FIRST CLASS
U.S. POSTAGE
PAID
CINCINNATI, OHIO
PERMIT NO. 3593

Important Mail

TO BE DIRECTED TO THE ATTENTION
OF EXECUTIVE PERSONNEL

WEDNESDAY, SEPT. 25TH AND THURSDAY, SEPT. 26TH

PUBLIC AUCTION

Plant Closed

LAFARGE MIDWEST, INC.

1400 Cement Road
Fredonia, Kansas 66736

100 Miles East of Wichita / 120 Miles North of Tulsa

IMPORTANT NOTICE:

Although information has been obtained from sources deemed reliable, the auctioneer makes no warranty or guarantee, expressed or implied, as to the accuracy of the information herein contained. It is for this reason that buyers should avail themselves of the opportunity to make inspection prior to the sale. This brochure is intended to provide general information of the equipment being offered and is subject to errors, omissions, additions or deletions. Please check with the Auctioneer's Office for a final listing. Items offered may or may not necessarily be sold as described and/or photographed in this brochure.

MAIL BIDS ACCEPTED WITH A 25% DEPOSIT

DIRECTIONS

From The North Side of Tulsa Proceed North on US 169 Approximately 90 Miles to US 400, Proceed West on US 400 Approximately 20 Miles to Fredonia, on Southeast End of Fredonia Turn Left onto County Road 1000, Proceed Approximately 2 Miles to Sale Site of Left. Watch For Auction Signs.

AUCTIONEERS

Jeffrey L. Luggen
Jerome A. Luggen
Jeffrey M. Luggen

Joseph M. Luggen
Frank J. Rome
John F. Rome



TERMS OF SALE

All equipment described herein will be sold "as is", "where is" to the highest bidder or bidders for cash in accordance with our regular terms and conditions of sale. Unless other satisfactory arrangements are made, a **25% deposit** in cash, certified or cashier's check payable to Cincinnati Industrial Auctioneers, Inc., **is required on all purchases.** Firm and personal checks accepted only if accompanied by a letter from your bank guaranteeing your funds. All sales are subject to state and/or local taxes unless a signed exemption form is presented at the time of purchase. **All balances are due at the conclusion of the sale.** No merchandise may be removed while the sale is in progress. **All bidders must comply with our Standard Terms of Sale,** copies of which will be available at the sale site or can be obtained from our website.

15% ONSITE BUYER'S PREMIUM
18% ONLINE BUYER'S PREMIUM



CINCINNATI
**INDUSTRIAL
AUCTIONEERS**

auctioneers | appraisers | since 1961

Sale Under The Management Of
Cincinnati Industrial Auctioneers
2020 Dunlap St., Cincinnati, Ohio 45214
Phone 513-241-9701 Fax 513-241-6760
cia-auction.com | info@cia-auction.com



biditup.com • Phone 818-508-7034