

**LARGE PRECISION FABRICATING, CNC MACHINING,
CONVENTIONAL MACHINING, WELDING, PAINTING &
BLASTING FACILITY OVER 1,000 LOTS**

PUBLIC AUCTION

Bidspotter.com™
Select Items of Major Machinery to be Offered Via
"Live Internet Bidding" at Bidspotter.com
See Instructions on Page 2
To Become a Qualified Bidder on the Internet

**NEW
2007**



4,000 Watt Trumpf Model TruLaser 3530 CNC Laser Cutting Machine

**NEW
2007**



Haas Model EC-2000 CNC Horizontal Machining Center

**NEW
2007**



Haas Model SL-30T Slant Bed CNC Turning Center

**NEW
2006**



Haas Model VF-3BYT CNC Vertical Machining Center

Featuring: 4,000 Watt Trumpf 3530 CNC Laser Cutter (2007), 2,600 Watt Trumpf L2503E CNC Laser Cutter (Rebuilt 2002), (2) Late Model Plasma Cutting Tables by MG & Messer, 350 Ton Cincinnati Proform Press Brake w/ Auto Crowning (2006), Zeiss Contura G2 CMM (2006), Faro Platinum P08 Arm CMM, Haas EC-2000 CNC HMC (2007), (2) Haas VF-3 CNC VMC's, (2) Haas SL30T CNC Turning Centers, Haas Tool Room CNC Lathe & Mill, 70 Ton Geka Iron Worker, (9) Tool Room Lathes to 40" X 16', (4) Radial Arm Drills, (6) Vertical Mills, Grinders, Tool Room Equipment, Paint Booths, Blast Booth, (3) Ford F-550 Service Trucks New as 2004, (3) Pick Up Trucks as New as 2007, Lift Trucks, Bridge Cranes to 10 Ton, Racking, Air Compressors to 100 HP, Large Quantity of Welding, Inspection, Perishable Tooling, Machine Accessories & Shop Equipment

Surplus to the Needs of

LAURENTIDE, INC.

915 Commerce Circle – Hanahan, South Carolina 29410

Just North of Downtown Charleston Off I-26

**SALE DATE:
Tuesday,
December 7th
Starting at 9:00 AM**

**INSPECTION:
Monday, December 6th
10:00 AM to 4:00 PM**

www.cia-auction.com

Features:

Upcoming Sale Information
Liquidation & Equipment Section
Email Auction Notification
Recent Auction Results
Lot Catalog Listings
Photo Galleries
Downloadable Forms
Complete Terms of Sale
Staff Profiles
Reference Information

**NEW
2006**



**Auto
Crowning**

350 Ton X 12' Cincinnati Model 350PFX10
Proform CNC Hydraulic Power Press Brake w/
Auto Crowning & CNC Backgauge

**NEW
2006**



Zeiss Model Contura G2/10/21 RDS
Coordinate Measuring Machine

**NEW
2006**



16' Wide X 40' Long X 17' High Carolina
Virginia Model 17-16-20 Industrial Blast
Drive-In Shop Blast Room

SALE UNDER THE MANAGEMENT OF

Cincinnati Industrial Auctioneers Inc.

2020 DUNLAP ST., CINCINNATI, OHIO 45214 PHONE (513) 241-9701 / FAX (513) 241-6760
INTERNET: cia-auction.com for printable brochures, catalog, terms and proxy-bidding





TUESDAY, DECEMBER 7TH - 9:00 AM



4,000 Watt Trumpf Model TruLaser 3530 CNC Laser Cutting Machine



Reverse View 4,000 Watt Trumpf TruLaser 3050 CNC Laser Cutting Machine

CNC LASER CUTTING MACHINES

4,000 Watt Trumpf Model TruLaser 3530 CNC Laser Cutting Machine; S/N A0235A0133, 4,000 Watt Resonator; S/N D0004A7908, Working Ranges: X - 3000 MM, XP - 300 MM, Y - 1500 MM, Y2 - 1500 MM, Z - 114 MM, Max Travel Ranges: X - 3104 MM, XP - 305 MM, Y - 1580 MM, Z - 114 MM, 88 KVA Connection, 20 MM Max Material Thickness, 60" X 120" Table Size, Laser On Hours: 9,515, Beam On Hours: 4,577 Hours (**New 2007**) **SEE PHOTO**

2,600 Watt Trumpf Model Trumatic L2503E Laser Cat CNC Laser Cutting Machine; S/N 903027, 2600 Watt Model TLF2600T Laser; S/N 445529, Working Ranges: X - 3000 MM, Y - 1500 MM, Z - 114 MM, Travel Ranges: X - 3100 MM, Y - 1580 MM, Z - 114 MM, 60" X 120" Table, Laser On Hours: 33,745, Beam On Hours: 12,691, Resonator Replaced 12/2002 (**New 1996**) **SEE PHOTO**

WEBCAST BIDDER INSTRUCTIONS

- All Internet bidders must register for this auction at www.bidspotter.com at least 48-Hours Prior to the Sale Date, **if you do not you will not be approved.**
- All Internet bidders must Post a Deposit of Approx. 25% of Your Planned Spending Budget or \$5,000.00 Minimum with Cincinnati Industrial Auctioneers in Order to be approved to Bid. Those who do Not Post the Deposit Will Not be Approved. **Period.**
- **Only Major Items Will be Available for Online Bidding.** Please refer to the Listing on www.bidspotter.com for Available Online Items.



- There is a 15% Buyer's Premium in Effect for All Online Purchases.
- We Highly Recommend that Potential Buyers Attend this Auction & Bid Live Onsite. This will give you the Ability to Inspect the Items & Fully Appreciate Their Condition, Along with Saving You 3% of the Buyer's Premium.

No Last Minute Registrations will be accepted. Make Sure to Register & Post Your Deposit No Later than 48-Hours Prior to the Start of the Auction.



2,600 Watt Trumpf Model Trumatic L2503E Laser Cat CNC Laser Cutting Machine

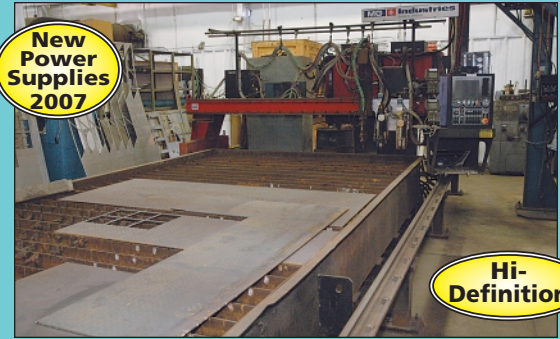




**NEW
2006**

**Auto
Crowning**

350 Ton X 12' Cincinnati Model 350PFX10 Proform CNC Hydraulic Power Press Brake w/ Auto Crowning & CNC Backgauge



MG Industries Model D7000 CNC Two-Plasma Head / Oxy Burning Table

**Hi-
Definition**



Close-Up View New Power Supplies



Close-Up View Burny CNC Control

PRESS BRAKES

350 Ton X 12' Cincinnati Model 350PFX10 Proform CNC Hydraulic Power Press Brake w/ Auto Crowning & CNC Backgauge; S/N 53718, Cincinnati Proform CNC Control w/ Pedestal & Foot Pedal, 10'6" Between Housings, 12' Overall Die Surface Area, 10" Stroke, 40" H.D. CNC Backgauge, Auto Crowning Cylinder, 8" Vertical Travel Backgauge, Power Upper Clamps (New 2006) **SEE PHOTO**

225/150 Ton X 12' Niagara Model 1B-150-10-12 Mechanical Power Press Brake w/ CNC Backgauge; S/N 51717, 10" Between Housings, 3" Stroke, 5" Ram Adjustment, 12" Shut Height, 30 SPM Push Button Control & Foot Pedal, Hurco Autobend 5C CNC Backgauge w/ Manual Vertical Backgauge Adjustments **SEE PHOTO**

60 Ton X 6' Accurpress Model 7606 CNC Hydraulic Press Brake w/ CNC Backgauge; S/N 2854LS, 52" Between Housings, 8" Stroke, Accurpress CNC Backgauge w/ Operators Pedestal & Foot Pedal (New 1995) **SEE PHOTO**

Large Quantity of Press Brake Dies Including; Four-Way Dies, Goose-Neck Dies, Top & Bottom Dies

CNC PLASMA CUTTING TABLES

MG Industries Model D7000 CNC Two-Plasma Head / Oxy Burning Table; Table S/N P6271Y, System Upgraded with New Power Supplies in 2007, 9' Wide X 24' Long Burning Table, (1) Standard, (1) Hi-Def And (1) Oxy Torch, 400 Amp Hypertherm Part No. 128606 Plasma Head; Powered by Hypertherm Model HT Master Power Source; S/N 4001-001135 &

Hypertherm Slave Power Source; S/N 07100106, Cooled by Hypertherm Model 501-AC-A-2 Water Chiller, 260 Amp Hypertherm High Definition Plasma Head; Pin #128606, Powered by Hypertherm Model HPR260 Power Source; S/N 508651, w/ Self Contained Water Chiller, Burny Model Phantom CNC Control; S/N 113662-13652, w/ Dual Pendants, Hypertherm High Performance Gas Mixing Console (New Power Supplies 2007) **SEE PHOTO**

Messer MG Systems Model Titan CNC Plasma / Oxy Burning Table; S/N Titan/4P-05-4410, Messer MG CNC Control, 110" Wide X 22' Downdraft Burning Table, 2" Thick Mild Steel Cap., 1-1/4" Stainless Cap., (1) Plasma Torch, (1) Oxy Torch, 275 Amp Innerlogic Model Proline 2260 Plasma Power Source; S/N 0220805 (New 2005) **SEE PHOTO**

> Torit Model DF03-6 Cartridge Type Dust Collector; S/N 22039711 (New 2005)

PLATE ROLLS

****33/64" X 8' Waldemar Model K-11-8 Hydraulic Power Plate Bending Roll;** S/N 60985-08, Push Button Control w/ Foot Pedal, Hydraulic End Drop Out, (2) 11" Dia. Rolls, (1) 8" Dia. Roll (New 2008) – **LEASED** **SEE PHOTO**

1/4" X 4' Webb Model R3LR8004 Mechanical Power Plate Bending Roll; S/N 67139, Push Button Controls, Hydraulic End Drop Out, (3) 8" Dia. Rolls **SEE PHOTO**

16 Ga. X 3' Peck, Stow & Wilcox Model 390-E Mechanical Power Plate Bending Roll; S/N 8616, Foot Pedal



5/16" X 10' Gasparini Model CO3006 Hydraulic Power Squaring Shear



225/150 Ton X 12' Niagara Model 1B-150-10-12 Mechanical Power Press Brake w/ CNC Backgauge



60 Ton X 6' Accurpress Model 7606 CNC Hydraulic Press Brake w/ CNC Backgauge

**NEW
1995**



Messer MG Systems Model Titan CNC Plasma / Oxy Burning Table

**NEW
2005**



**33/64" X 8' Waldemar Model K-11-8 Hydraulic Power Plate Bending Roll

**NEW
2008**



1/4" X 4' Webb Model R3LR8004 Mechanical Power Plate Bending Roll



TUESDAY, DECEMBER 7TH - 9:00 AM



Partial View Late Model Welding Equipment Including (30+) Miller Mig Welders



20' X 30' Hyd-Mech Model M-20A Automatic Horizontal Band Saw



Bank View (2) Marvel Tilt Frame Band Saws



8' Chicago Model BPO-812-6 Manual Finger Brake



Comac Horizontal Angle Bending Roll



70 Ton Geka Model Hydracrop 70/A Hydraulic Power Ironworker



Partial View (10) Weldsale Acorn Style Welding Tables



(1 of 3) Demmeler Precision Welding Tables

WELDERS & RELATED

1,000 Amp Midwest Fasteners Ultra Arc UA1000 Stud Welder
(4) 450 Amp Miller Deltaweld 452 DC Welding Power Sources; Miller S-60 & Miller S-22A Wire Feeders
450 Amp Miller Deltaweld 451 DC Welding Power Source
(2) 350 Amp Miller Invision 354MP DC Inverter Arc Welders; Miller Extended Reach Wire Feeders
350 Amp Miller Millermatic 350P Pulsed Mig Welder
300 Amp Miller Millermatic 300 Mig Welder
(13) 250 Amp Miller Millermatic 252 Mig Welders
(6) 250 Amp Miller Millermatic 251 Mig Welders
(3) 250 Amp Miller Millermatic 250 Mig Welders
250 Amp Miller Millermatic 250X Mig Welder
(4) Miller And Lincoln Tig Welders Consisting of; 250 Amp Miller Syncrowave 250DX, 350 Amp Miller Syncrowave 350LX, (2) 300 Amp Lincoln Idealarc Tig 300/300s
20 KVA Miller Model SSW-2020ATT Spot Welder
Thermal Arc Model PAK 5XR Plasma Cutter
OTC Model D-7000 Plasma Cutter

WELDING SUPPORT EQUIPMENT

(4) 47" X 47" Demmeler Type 3-D1001 Fixture Tables
39" X 39" Demmeler Type 3-D1056 Fixture Table
(20) Heavy Duty Welding Tables In Sizes to 5' X 8'; (4) 5' X 8', (7) 4' X 4', (2) 3' X 5', (6) 5' X 5'
(9) 5' X 8' Weldsale Acorn Tables
5' X 10' Weldsale Acorn Table
3' X 6' Diversi-Tech Downdraft Grinding Table
Large Quantity Welding Tools, Supplies And Accessories
Consisting of; Clamps, Welding Leads, Welding Helmets, Welding Rods, Gloves, Grinders, Abrasives & Other Related Items

BAND SAWS

20' X 30' Hyd-Mech Model M-20A Automatic Horizontal Band Saw; S/N T0998051, Hyd-Mech MTA-G1 PLC Control & PB Controls, (29) Programmable Jobs, 0 - 33" Shuttle Stroke, 20'6"L X 1 1/2" Wide X .050" Thick Blade Size, 75 - 400 F/Min Blade Speed, Hydraulic Clamping, Coolant System, 15' X 22" Infeed Roller Conveyor (New 1998)
SEE PHOTO

18" Metal Mizer Model MS2018 Tilt Frame Vertical Band Saw; S/N MS0691196, Coolant System, 28" X 28" Table

18" Marvel Model 8-Mark-II Tilt Frame Vertical Band Saw; S/N 827781, PB Controls, Coolant System, 20" X 15' Manual Chain Drive Infeed Conveyor

18" Marvel Model 8/M8 Tilt Frame Vertical Band Saw; S/N 812036, PB Controls, Coolant System, 20" X 20' Manual Chain Drive Infeed Conveyor

20" Powermatic Model 88 Vertical Band Saw; S/N 8288006, 24" X 24" Table w/ Blade Welder

20" Everett Model 2022 Abrasive Chop Saw; S/N 2928

MISC. FABRICATING MACHINERY

Comac Horizontal Angle Bending Roll; S/N N/A, 1.5" - 2.5" Tube Dies, Foot Pedals, Portable
SEE PHOTO
70 Ton Geka Model Hydracrop 70/A Hydraulic Power Ironworker; S/N 5572, Foot Pedal, 5" X 5" X 1/2" Angle, 18" X 5/8" Flat, 1.75" Round, 1.75" X 1.75" Square, 1.125" Dia. Thru 3/4" Punch Capacity
SEE PHOTO

5/16" X 10' Gasparini Model CO3006 Hydraulic Power Squaring Shear; S/N 386705, Gasparini PB Control, Front Operated Power Backgauge, 15 - 30 SPM
SEE PHOTO

8' Chicago Model BPO-812-6 Manual Finger Brake; S/N 310646
SEE PHOTO

200 Ton Mfg. Unknown Hydraulic H-Frame Press; 7.5 HP Power Team Hydraulic Unit w/ Pendant Control
SEE PHOTO

60 Ton K.R. Wilson Model 37G Hydraulic H-Frame Press; S/N 2890
SEE PHOTO

CNC HORIZONTAL MACHINING CENTER

Haas Model EC-2000 CNC Horizontal Machining Center; S/N 2052145, Haas Automation CNC Control, 36" X 84" T-Slotted Table, 84" X-Axis, 40" Y-Axis, 32" Z-Axis, 50 Taper Spindle, Spindle Speeds to 5,000 RPM, 30-Position ATC, Coolant System, Chip Augers, 30 HP Two-Speed Gear Drive, Thru Spindle Coolant (New 2007)
SEE PHOTO

(50) No. 50 Taper Tool Holders

(4) 24"H X 6" X 6" Chick Double Jaw Tombstones

48"L X 48"H Drilled & Tapped Angle Plate

CNC VERTICAL MACHINING CENTERS

Haas Model VF-3BYT CNC Vertical Machining Center; S/N 1050720, Haas CNC Control, 25" X 54" Table, 40" X-Axis, 26" Y-Axis, 25" Z-Axis, Spindle Speeds to 10,000 RPM, 40 Taper Spindle, 24-Position ATC, Extended Travel, Haas VOP-D, 30 HP Two-Speed Gear Drive, Thru Spindle Coolant (New 2006)
SEE PHOTO

Haas Model VF-3B CNC Vertical Machining Center; S/N 1055598, Haas CNC Control, 18" X 48" Table, 40" X-Axis, 20" Y-Axis, 25" Z-Axis, Spindle Speeds to 10,000 RPM, 40 Taper Spindle, 24-Position ATC, Haas VOP-D, 30 HP Two-Speed Gear Drive, 1,000 IPM, Thru Spindle Coolant (New 2007)
SEE PHOTO

Okuma & Howa Model 5V-NC CNC Vertical Milling Machine; S/N 55308, Fanuc CNC Control, 18" X 62" Table, 50 Taper Spindle, 2500 RPM Spindle, Coolant System

(111) No. 40 Taper Tool Holders

CNC TURNING CENTERS

Haas Model SL-30T Slant Bed CNC Turning Center; S/N 3076401, Haas Automation CNC Control, 10" Kitagawa B-210 Hydraulic Chuck, 30" Max Swing Over Bed, 14.5" Max Swing Over Carriage, 34" Between Centers, 11.3" X-Axis, 34" Z-Axis, 3" Spindle Bore, 12-Position Tool Turret, 3,400 RPM Spindle, 30 HP Vector Dual Drive, Tailstock, Tool Presetter, Henning Model SL30 Chip Conveyor (New 2007)
SEE PHOTO

> Haas Model BAR300 Bar Feed; S/N 92325



200 Ton Mfg. Unknown Hydraulic H-Frame Press



Partial View Large Raw Material Inventory





Haas Model EC-2000 CNC Horizontal Machining Center

Haas Model SL-30T Slant Bed CNC Turning Center; S/N 73951, Haas Automation CNC Control, Collet Chuck, 30" Max Swing Over Bed, 14.5" Max Swing Over Carriage, 34" Between Centers, 11.3" X-Axis, 34" Z-Axis, 3" Spindle Bore, 12-Position Tool Turret, 3,400 RPM Spindle, Haas VOP-C, 30 HP Vector Dual Drive, Tailstock, Tool Presetter, Hennig Model SL30 Chip Conveyor (New 2006)

> **Haas Model BAR300 Bar Feed;** S/N 91909

CNC TOOLROOM MILL & LATHE

Haas Model TM-1 CNC Vertical Toolroom Mill; S/N 1050571, Haas CNC Control, 10.5" X 48" Table, 30" X-Axis, 12" Y-Axis, 16" Z-Axis, Spindle Speeds to 4,000 RPM, 40 Taper Spindle, 10-Position ATC, Coolant System (New 2006)

SEE PHOTO

Haas Model TL-2 CNC Toolroom Lathe; S/N 73296, Haas CNC Control, 16" Max Swing Over Bed, 11" Max Swing Over Carriage, 48" Distance Between Centers, 10" 3-Jaw Chuck, 2,000 RPM Spindle Speed, 8" X-Axis, 48" Z-Axis, Coolant System (New 2006)

SEE PHOTO

MISC. MACHINERY

Couth Model MC-2000 Programmable Dot Peen Marking Machine; S/N N/A, Programmable Digital Control

Pro Eco Model HD48-48E Electric Fired Turn Table Style Parts Washer; S/N 88-213, 60" X 60" X 60" Inside Chamber Dimensions, 48" Turn Table, 2,000 LB Turn Table Capacity, 420 Gallon Wash Tank, 200 Gallon Rinse Tank, 48 KW Tank Heater

SEE PHOTO

Greive Model 333 Electric Oven; S/N 96578A0209, 400 Degree F Max Temperature, 36" X 36" X 36" Inside Chamber

48" Dia. Vestil Model SWA-PMO Rotary Pallet Stretch Wrap Machine; S/N S453773, Pendant & Foot Pedal Controls (New 2007)

48" Sweco Model FM-10-7 Vibratory Bowl Finisher; S/N 10FM-268-30

Ridgid Model 535 Electric Pipe Threader; S/N 357196

36" Econoline Abrasive Blat Cabinet; S/N N/A w/ Reclaim 10,000 LB Slater Brecknell Model DCSB-4848-10 Digital Platform Scale; S/N 56373

(2) 72" X 54" General Shelters Port-A-Cool Portable Cooling Units

Numerous Various Size and Style Belt, Combination And Disc Sanders

MISC. TOOLROOM MACHINERY

3" Lucas Horizontal Boring Mill; S/N 41.B0512, 10 HP, 34" X 50" Table, Morse Taper Spindle, 13 - 1500 RPM, 36" Vertical Travel

Powell Planer Mill; 19" X 97" Table, 24" Between Side Frames, 36" Vertical Travel

Hansford Model 15 Keyseater; S/N 15-784, 20" X 31" Table

Sunnen Model MBB-1690 Honing Machine; S/N 80776

MACHINE ACCESSORIES AND TOOLING

Large Quantity Machine Accessories Consisting of; (30) Various Size Lathe Chucks up to 18", 8" Super Spacer, T-Slotted Saddles, Tables, Rotary Tables, Collets, Quick Change Tool Posts, R8 Tool Holders, Vidmar Cabinets, (3) Machine Vises up to 8", Angle Plates, Dumore Tool Post Grinder, 3C Collet Spin Fixtures, Taping Heads, Live Centers, Hold Downs & Other Related Items

Large Quantity Perishable Tooling Consisting of; Carbide Inserts, Broach Tooling, Carbide Drills, Indexable Spade Drills, Indexable Lathe Tooling, Boring Bars, Face Mills, End Mills, Reamers, Taps, Keyseat Cutters, Radius Contour Mills, Letter & Number Stamps, & Other Related Items

SHOP EQUIPMENT

Large Quantity Late Model Shop Equipment Consisting of; (2) Lift-Rite High Lift Pallet Trucks, Numerous Other Pallet Trucks, (13) Sections 42"D X 108"W X 120"H Adjustable Beam Pallet Racking, 48" Arm X 16"W X 10"H Cantilever Rack, (2) Sections 42" Arm X 7"W X 86"H Cantilever Rack, 42" Arm X 7"W X 10"H Cantilever Rack, Oxy-Acetylene Carts, Fireproof Cabinets, Steel Banding Carts, Pigeon Hole Hardware Cabinets, (200) C-Clamps, Carousel Hardware Shelves, Nylon Slings, Chains, Self Dumping Hoppers, Hose Reels, Welding Curtains, Shop Fans, Steel Carts, Rubbermaid Carts, Steel Shelving, Shop Vacs, Step Ladders, Trash Cans, 2-Door Storage Cabinets, 2-Wheel Hand Trucks, Bench Vises, & Other Related Items, Hand Tools Consisting of; Milwaukee Mag Base Drill, Slugger Mag Base Drill, (60) Various Size Hand Grinders by Dewalt, H.D. Milwaukee Electric Drill, Electric Hammer Drill, (5) Electric Sheet Metal Nibblers, Cordless Drills by Dewalt, Circular Saws, 12" Dewalt Mitre Base Chop Saw, H.D. Black & Decker Electric Hammer & Other Related Items

MATERIAL INVENTORY

Large Steel Material Inventory Including; Bar Stock, Angle, Pipe, Channel, Tubing Stored in pigeon hole rack that is 70' Long X 15' High, Approx (20) sheets of steel plate from 1/4" to 1" Thickness Most Are 5' X 10' Also there is a large quantity of cut-offs, Total estimated weight of all steel is 200,000 - 225,000 Lbs.



Haas Model VF-3BYT CNC Vertical Machining Center



Haas Model VF-3B CNC Vertical Machining Center



Haas Model SL-30T Slant Bed CNC Turning Center



Haas Model TM-1 CNC Vertical Toolroom Mill



Haas Model TL-2 CNC Toolroom Lathe



Haas Model SL-30T Slant Bed CNC Turning Center



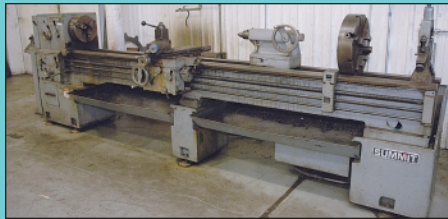
TUESDAY, DECEMBER 7TH - 9:00 AM



Zeiss Model Contura G2/10/21 RDS Coordinate Measuring Machine



28" X 204" Summit Model 28 Geared Head Engine Lathe



20" X 124" Summit Geared Head Engine Lathe



Partial View (2 of 4) Radial Arm Drills



Induma Model 2045P Horizontal Milling Machine



Partial View (1 of 6) Vertical Milling Machines



Faro Model Platinum Arm P08 Portable Coordinate Measuring Machine



Pro Eco Model HD48-48E Electric Fired Turn Table Style Parts Washer



16' Wide X 40' Long X 17' High Carolina Virginia Model 17-16-20 Industrial Blast Drive-In Shop Blast Room

CMM AND INSPECTION EQUIPMENT

Zeiss Model Contura G2/10/21 RDS Coordinate Measuring Machine; S/N 200612500534, 52" X 97" Drilled & Tapped Granite Table, Zeiss L1 Vast XXXT Probe, Zeiss RST-P403 Probe, Calypso Version 4.8.08.14 Software, MSR Mini Multi Sensor Rack Tool Changer, Pendant Joystick Control, Air Dryer (New 2006) SEE PHOTO

Faro Model Platinum Arm P08 Portable Coordinate Measuring Machine; S/N P08-02-07-05752, Faro Cam 2 Measure X Version 1.0 Software, Magnetic Base (New 2007) SEE PHOTO

Large Quantity of Inspection Equipment Consisting of; (2) 80" Kanon Vernier Calipers, 48" X 96" Tru-Stone Granite Surface Plate w/ Stand, (8) SPI Pin Gauge Sets, Dial Bore Gauges, Height Gauges, Vernier Calipers, Various Size I.D. & O.D. Micrometers, Ring Gauges, Plug Gauges, Block Gauges, Protractors, Radius Gauges, Rockwell Hardness Testers

ENGINE LATHES

40/58" X 192" Swift Model 19C Gap Bed Geared Head Engine Lathe; S/N 14468, 4" Spindle Bore, 30" 4-Jaw Chuck, 58" 4-Jaw Chuck, 58" Swing In Gap, 40" Swing Over Bed, 28" Swing Over Carriage, 4 - 230 RPM, 24" Steady Rest, (2) Screw Supports SEE PHOTO

28" X 204" Summit Model 28 Geared Head Engine Lathe; S/N 102862, 4" Spindle Bore, 20" Swing Over Carriage, 24" 4-Jaw Chuck, Taper Attachment, (2) Steady Rests, 14 - 1010 RPM, Chasing Dial SEE PHOTO

20" X 124" Summit Geared Head Engine Lathe; S/N 03476458, 4" Spindle Bore, 12" Swing Over Carriage, 12" 3-Jaw Chuck, Taper Attachment, 22 - 1500 RPM, Chasing Dial, Steady Rest SEE PHOTO

20" X 78" Century Geared Head Engine Lathe; S/N 1766, 1.75" Spindle Bore, 10" Swing Over Carriage, 10" 3-Jaw Chuck, 19 - 1675 RPM, Chasing Dial, Steady Rest

(2) 20" X 56" Dong Yang Model LS Geared Head Engine Lathes; S/Ns DY45068, DY45023, 2" Spindle Bore, 14" Swing Over Carriage, 16" 4-Jaw Chuck, 35 - 1800 RPM, Chasing Dial, Steady Rest

18" X 56" Dong Yang Model LS Geared Head Engine Lathe; S/N DY40004, 2" Spindle Bore, 9" Swing Over Carriage, 10" 3-Jaw Chuck, 35 - 1800 RPM, Chasing Dial

18" X 48" Dong Yang Model LS Geared Head Engine Lathe; S/N DY00136, 2" Spindle Bore, 9" Swing Over Carriage, 10" 3-Jaw Chuck, 35 - 1800 RPM, Chasing Dial, Steady Rest

16" X 40" Whatcheon Geared Head Engine Lathe; S/N L7810140, 9" Swing Over Carriage, 10" 3-Jaw Chuck, Chasing Dial

RADIAL ARM DRILLS

8' Arm X 17" Column Kitchen-Walker Model E-4 Radial Arm Drill; S/N 2723, 12 - 1000 RPM Spindle

5' Arm X 15" Column Summit Model 5 Radial Arm Drill; S/N 670, 35 - 1500 RPM Spindle, 32"W X 31"L X 21"H Tilting Drill Box

5' Arm X 13" Column Ikeda Model RM-1300 Radial Arm Drill; S/N 80258, 30 - 1440 RPM Spindle, 26"W X 23"L X 16"H Drill Box

3' Arm X 7" Column Willis Model RD-750 Radial Arm Drill; S/N TY910903, 88 - 1500 RPM Spindle, 16"W X 22"L X 12"H Drill Box

MILLING MACHINES

3 HP MSC Model 800872 Variable Speed Vertical Mill; S/N 771626, PTF, 10" X 52" Table, DRO

2 HP Bridgeport Variable Speed Vertical Mill; S/N 210152, PTF, 9" X 42" Table, DRO

(2) 2 HP Lagun Model FTV-25 Variable Speed Vertical Mills; PTFs, 10" X 50" Tables, DROs

(2) 1 1/2 HP Bridgeport Variable Speed Vertical Mills; S/Ns 161602 & 161613, PTF, 9" X 42" Tables, DROs

Induma Model 2045P Horizontal Milling Machine; S/N 739183, 15-3/4" X 75" Table, DRO SEE PHOTO

Milwaukee No. 2 Plain Model H Horizontal Mill; S/N 544045, 10" X 50" Table

GRINDERS - ALL TYPES

13" X 40" Churchill O.D. Cylindrical Grinder; S/N 21550, Drop Down Attachment

14" X 60" Mattison Hydraulic Surface Grinder; S/N N/A, 2" Wide Grinding Wheel

12" X 39" Kikinda Type URB-1000-A Hydraulic Surface Grinder; S/N 7416, 3" Wide Grinding Wheel

6" X 18" Brown & Sharpe No. 2L Hand Feed Surface Grinder; S/N 523-2-356

Beamato Model CH-40-S Tool & Cutter Grinder; S/N 496915, 5-1/4" X 37" Table

(6) Double End Grinders by Baldor, Cincinnati & Hammond

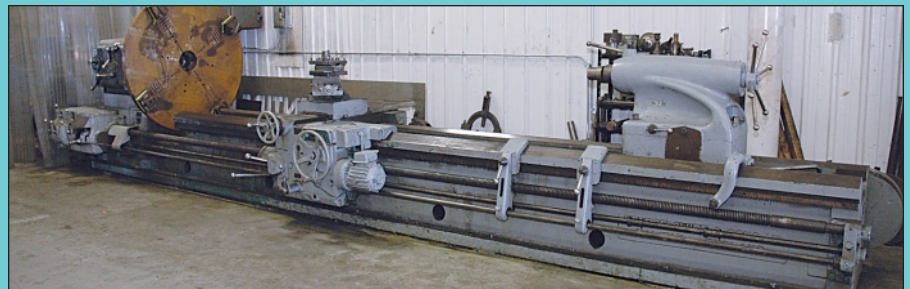
BLAST ROOM

16' Wide X 40' Long X 17' High Carolina Virginia Model 17-16-20 Industrial Blast Drive-In Shop Blast Room; S/N 13303-06, Albany Model RCA-C02333 Electric Overhead Door; S/N S1D80507-1, (2) Clemco 6 Cu. Ft Classic 150 Abrasive Blast Machines, In Floor Auger Type Shot Recovery System (New 2006) SEE PHOTO

PAINT BOOTHS & RELATED

18' Wide X 60' Long X 16' High Global Finishing Solutions Model CDG-1816-POT-0-S Cross Draft Drive-Thru Paint Booth; S/N 75114A, Contract No. 1033400, Steel Modular Construction, 14" Wide Double Doors on Each End, (2) Man Doors & (17) Light Fixtures on Each Long Wall, Pro-Chem Monarch PCI-70ABC Industrial Fire Suppression System, Ceiling Mounted Natural Gas Heaters, 150 Degree Max Temperature (New 2007) SEE PHOTO

20' Wide X 40' Long X 16' High Mfg. Unknown Cross Draft Drive-Thru Paint Booth; Steel Modular Construction, 14" Double Doors on One End & 14" Overhead Door on Other End, (2) Man Doors, (12) Light Fixtures on Each Long Wall, Gas Fired External Heater, Anslul Dry Chemical Fire Protection SEE PHOTO



40/58" X 192" Swift Model 19C Gap Bed Geared Head Engine Lathe



NEW 2007
18' Wide X 60' Long X 16' High Global Finishing Solutions Model CDG-1816-POT-0-S Cross Draft Drive-Thru Paint Booth



20' Wide X 40' Long X 16' High Mfg. Unknown Cross Draft Drive-Thru Paint Booth



(2) 2004 International Model 4300DT466 Single Axle Straight Trucks

12' Wide X 24' Long X 8' High Double Door Back Draft Drive-Thru Paint Booth; Ansul Dry Chemical Fire Suppression System, Side Wall & Ceiling Lights, Man Door

Painting Accessories consisting of; Red Devil Twin Arm Paint Shakers, 2 Gallon Paint Pots, Spray Guns, & Other Related Items

AIR COMPRESSORS & RELATED

100 HP Ingersoll Rand Model SSR-EP100 Cabinet Enclosed Rotary Screw Air Compressor; S/N CK3715U00258, 17,713 Total Hours, 6,131 Loaded Hours **SEE PHOTO**

75 HP Ingersoll Rand Model SSR-EP75 Cabinet Enclosed Rotary Screw Air Compressor; F8969U93326 **SEE PHOTO**

50 HP Gardner Denver Model ECHQJD Cabinet Enclosed Rotary Screw Air Compressor; S/N M06931

25 HP Twistair Model TA-025TAN2C Two-Stage Horizontal Tank Air Compressor; S/N 144080

10 HP Dayton Speedaire Model 1WD74 Two-Stage Horizontal Tank Air Compressor; S/N D024535

10 HP Mfg. Unknown Two-Stage Horizontal Tank Air Compressor

400 Gallon Horizontal Air Receiving Tank Ingersoll Rand Model TS100 Refrigerated Air Dryer; S/N 022006 (New 2006)

Ingersoll Rand Model TS6A Refrigerated Air Dryer; S/N 022807 (New 2007)

Ingersoll Rand Model TS-25 Refrigerated Air Dryer; S/N N/A

Domnick Hunter Model CRD400 Refrigerated Air Dryer; S/N 2429770001

BRIDGE CRANES & RAIL

10 Ton X 60' Approx. Span Whiting Double Girder Top Running Overhead Bridge Crane; 10 Ton Whiting Cable Hoist w/ Pendant Control **SEE PHOTO**

Approx. 180' Crane Rail & Raceway
5 Ton X 35' Approx. Span Whiting Single Girder Top Running Overhead Bridge Crane; 5 Ton Cable Hoist w/ Pendant Control
Approx. 120' Crane Rail & Raceway

3 Ton X 25' Approx. Span R&M Single Girder Bottom Running Overhead Bridge Crane; 3 Ton R&M Cable Hoist w/ Pendant Control

Approx. 100' Crane Rail & Raceway

2 Ton X 20' Approx. Span Single Girder Bottom Running Overhead Bridge Crane; Manual Movement, 2 Ton Manual Chain Hoist

Approx. 160' Crane Rail

LIFT TRUCKS & RELATED

6,000 LB Baker Model E30B Electric Lift Truck; S/N 2659-0005, 2-Stage Mast, 156" Lift Height, 4267 Hours

5,000 LB Nissan Electric Fork Lift; 3-Stage Mast, Side Shift

4,500 LB Caterpillar Model P5000 Pneumatic Tire LP Gas Lift Truck; S/N AT3505372, 3-Stage Mast, 188" Lift Height, Side Shift, 2771 Hours

4,000 LB Toyota Solid Tire LP Gas Lift Truck; S/N N/A, 2-Stage Mast, 11050 Hours

2,750 LB Caterpillar Model ET3000 Three-Wheel Electric Lift Truck; S/N ETB1200046, 3-Stage Mast, 188" Lift Height, Side Shift, 2312 Hours

2,400 LB Caterpillar Model E3000 Electric Lift Truck; S/N A4EC110235, 3-Stage Mast, Side Shift, 3037 Hours

JLG Model 1932E2 Self Traveling Electric Scissor Lift; S/N N/A, Pendant Controls, 36" Platform Extension

Advance Model Converta Max 26 Walk Behind Electric Floor Scrubber; S/N N/A

WIRE BASKETS

(500+) Galvanized Collapsible Stacking Wire Baskets Sizes Include 42" Wide X 42" Long X 34" Deep, 55" Wide X 36" Long X 28" Deep, 80" Wide X 42" Long X 36" Deep; Most Lightly Used, Very Clean and Good Condition - **Final Quantities To Be Determined - See Catalog or Call For Details**

TRUCKS

(2) 2004 International Model 4300DT466 Single Axle Straight Trucks; Vin #1HTM-MAAM84H592996, w/ 143,449 Miles & Vin

#1HTMMAAM94H593235, w/ 142,611 Miles, 195 HP Navistar Diesel Engines, 4-Speed Automatic Transmission, 260" WB, 8' Wide X 24' Long Steel Bed **SEE PHOTO**

2004 Ford F550XL Super Duty Service / Crane Truck; Vin #1FDAF56P74EC48271, w/ 132,555 Miles, Power Stroke V8 Turbo Diesel Engine, 6-Speed Manual Transmission, w/ Adkins Model 132-92-AB Service Bed; S/N 7761-3-04, Equipped w/ Hydraulic Out Riggers, Auto-Crane Model 6406B Hydraulic Crane, Miller Bobcat 225G Gas Powered Welder, IMT Model DA435HA Hydraulic Air Compressor, Air & Lube Hose Reels

2000 Ford F450 Super Duty Service Truck; Vin #1FDXF46F5FYED46510, w/ 111,842 Miles, Power Stroke V8 Diesel Engine, Automatic Transmission, Reading Service Bed Equipped w/ 4,000 Watt Sparks Gasoline Generator Set, Honda GX340 Gas Powered 2-Stage Air Compressor, Air Hose Reel

2000 Ford F550XL Super Duty Service Truck; Vin #1FDAF56F6YED60928, w/ 131,914 Miles, Power Stroke V8 Diesel Engine, Automatic Transmission, Dynapac Service Bed, Equipped w/ M2 Power Model SGW-250SS Gas Powered Welder, Auto Crane Model 6006 EH Hydraulic Crane, 11 HP Ingersoll Rand Gas Powered 2-Stage Air Compressor

2007 GMC 2500 Sierra Four-Wheel Drive Pick-Up Truck; Vin #1GTHK24D97E103226, w/ 77,021 Miles, 6.6 Liter Duramax Diesel Engine, Allison Transmission

1992 Ford F350 Custom Flat Bed Truck; Vin #1FDHF37Y0NNB05870, w/ 61,022 Miles, 6 Cylinder Gas Engine, 5-Speed Manual Transmission, Set up as Service Truck w/ Hose Reel, Headache Rack, 7' X 10' Steel Flat Bed & Miller Bobcat 225 Welder (To Bed Sold Separately)

1996 Chevrolet 2500 Pick-Up Truck; Vin #1GCGC2R4T220025, w/ 204,991 Miles, V-8 Gas Engine, Automatic Transmission

1990 Isuzu Cab Over Single Axle Straight Truck; Vin #JALE5B1U1L3001275, w/ 140,528 Miles, 5-Speed Manual Transmission, Diesel Engine, 8' X 18' Steel Flat Bed

1987 Ford F150 Pick-Up Truck; Vin #1FTDF15N9JNA46957, Showing 78,752 Miles (Out of Service)



(500+) Various Size Collapsible Wire Baskets



(1 of 4) Late Model Air Dryers



100 HP Ingersoll Rand Model SSR-EP100 Cabinet Enclosed Rotary Screw Air Compressor



75 HP Ingersoll Rand Model SSR-EP75 Cabinet Enclosed Rotary Screw Air Compressor



(1 of 2) 14' X 40' Portable Office Trailers Complete w/ Electric and HVAC

PUBLIC AUCTION

**LARGE PRECISION FABRICATING, CNC MACHINING,
CONVENTIONAL MACHINING, WELDING, PAINTING &
BLASTING FACILITY OVER 1,000 LOTS**

**Surplus To The Needs Of
LAURENTIDE, INC.**

915 Commerce Circle
Hanahan, South Carolina 29410
Just North of Downtown Charleston Off I-26

**SALE DATE:
Tuesday, Dec. 7th
STARTING: 9:00 AM**

**INSPECTION:
Monday, December 6th
10:00 AM to 4:00 PM**



**Cincinnati Industrial
Auctioneers Inc.**

2020 DUNLAP ST., CINCINNATI, OHIO 45214
PHONE (513) 241-9701 / FAX (513) 241-6760
INTERNET: cia-auction.com



(2) Trumf CNC Lasers To 2007



Haas CNC VMC's To 2007



Large Paint & Blast Booths To 2007



Late Model Vehicle Fleet

FIRST CLASS MAIL!

PRE-SORT
FIRST CLASS
U.S. POSTAGE
PAID
CINCINNATI, OHIO
PERMIT NO. 3593



Important Mail

TO BE DIRECTED TO THE ATTENTION
OF EXECUTIVE PERSONNEL

TUESDAY, DECEMBER 7TH

PUBLIC AUCTION

**SURPLUS TO THE NEEDS OF
LAURENTIDE, INC.**

915 Commerce Circle
Hanahan, South Carolina 29410
Just North of Downtown Charleston Off I-26

IMPORTANT NOTICE:

Although information has been obtained from sources deemed reliable, the auctioneer makes no warranty or guarantee, expressed or implied, as to the accuracy of the information herein contained. It is for this reason that buyers should avail themselves of the opportunity to make inspection prior to the sale. This brochure is intended to provide general information of the equipment being offered and is subject to errors, omissions, additions or deletions. Please check with the Auctioneer's Office for a final listing. Items offered may or may not necessarily be sold as described and/or photographed in this brochure.

MAIL BIDS ACCEPTED WITH A 25% DEPOSIT

DIRECTIONS

From The I-526 & I-26 Junction Continue Heading East for 2.5 Miles on I-526 to Exit 19 (N. Rhett Ave.), Turn North onto N. Rhett Ave & Proceed 1.2 Miles to Commerce Circle, Turn Right onto Commerce Circle & Continue 1/10 Mile to Sale Site on Left. Watch for Auction Signs & Auction Parking Signs.

AUCTIONEERS

Cincinnati Industrial Auctioneers, Inc. - License No. 2566
Jeffrey L. Luggen - License No. 1250

TERMS OF SALE

All equipment described herein will be sold "as is", "where is" to the highest bidder or bidders for cash in accordance with our regular terms and conditions of sale. Unless other satisfactory arrangements are made, a **25% deposit** in cash, certified or cashier's check payable to Cincinnati Industrial Auctioneers, Inc., is **required on all purchases**. Firm and personal checks accepted only if accompanied by a letter from your bank guaranteeing your funds. All sales are subject to state and/or local taxes unless a signed exemption form is presented at the time of purchase. **All balances are due at the conclusion of the sale.** No merchandise may be removed while the sale is in progress. **All bidders must comply with our Standard Terms of Sale**, copies of which will be available at the sale site or can be obtained from our website.

**12% BUYER'S PREMIUM ONSITE
15% BUYER'S PREMIUM ONLINE**



SALE UNDER THE MANAGEMENT OF



Cincinnati Industrial Auctioneers Inc.

2020 DUNLAP ST., CINCINNATI, OHIO 45214 PHONE (513) 241-9701 / FAX (513) 241-6760
INTERNET: cia-auction.com for printable brochures, catalog, terms and proxy-bidding

**SALE DATE
Dec. 7th
9:00 AM**