

**LARGE METAL ROOFING MANUFACTURER
INCLUDING METAL INVENTORY, STEEL PROCESSING,
FABRICATING & SUPPORT EQUIPMENT**

PUBLIC AUCTION

Bidsnorter.com™
To Become a Qualified Bidder on the Internet
See Instructions on Page 2



(2) ESE Model Panelformer 100 Trailer Mounted Standing Seam Roof Panel Formers



126" RAS Type 74-30 CNC Metal Folder



20,000 LB Herr Voss Motorized Recoiler w/ Coil Car



Approximately 175,000 Steel Coil Inventory

Featuring: Huge Material Inventory Including Approx. (6,700) Sheets Corrugated Stainless Steel Arch Grade Roofing Panels, Large Quantity Raw Material Including Coils, Sheets, Structural, Tube & Pipe, Large Quantity Components Including Cutters, Siding, Brackets, Hardware & Related, 126" Ras Type 74-30 CNC Folder, 10,000 LB X 42" Wide X 10 Ga. Cut-To-Length Line w/ Herr Voss Leveler, 20,000 LB X 40" Wide Coating Line w/ Herr Voss Recoiler, Large Quantity Other Steel Processing Components Including Uncoilers, Recoilers, Slitter Heads, Straighteners, Brush Stands & Related, (2) ESE Model Panel Former 100 and (2) Model K9 Portable Roofing Panel Machines (New As 1999), 1/4" X 10' Cincinnati Shear, Other Brakes, Rolls & Shears, Bridge Cranes, Saws, Toolroom, Woodworking Shop and Support Equipment

Plant Closed, the Former Assets of a

METAL ROOFING MANUFACTURER

1 State Street – Follansbee, West Virginia 26037

20 Miles North of Wheeling, WV on the Ohio River

**SALE DATE:
Thursday,
September 6th
Starting at 9:00 AM**

**INSPECTION:
Wednesday, Sept. 5th
10:00 AM to 4:00 PM**

www.cia-auction.com

Features:

Upcoming Sale Information
Liquidation & Equipment Section
Email Auction Notification
Recent Auction Results
Lot Catalog Listings
Photo Galleries
Downloadable Forms
Complete Terms of Sale
Staff Profiles
Reference Information



Approximately 6,700 Sheets of Corrugated Roofing Panels



Sale Under The Management Of

CINCINNATI INDUSTRIAL AUCTIONEERS

auctioneers | appraisers | since 1961 | cia-auction.com | info@cia-auction.com

2020 Dunlap St., Cincinnati, Ohio 45214 Phone 513-241-9701 Fax 513-241-6760



THURSDAY, SEPTEMBER 6TH - 9:00 AM



Partial View Large Quantity Roofing Accessories Including Gutters, Downspouts, Elbows, Brackets and Hardware



Approximately 175,000 Steel Coil Inventory



1/4" X 10' Cincinnati Model 1810 Mechanical Power Squaring Shear



Bank View Lift Trucks To 15,000 Lb. Capacity



Bank View 1999 GMC C6500 Flat Bed Dump Truck and 1998 International 4700 Flat Bed Truck



Approximately 6,700 Sheets of Corrugated Roofing Panels



IMPORTANT REMOVAL NOTICE

"Time is of the Essence" with regards to the removal of the equipment from the premises. All items must be removed by September 21st at 4:00 pm. Any items remaining after this time will be considered abandoned and ownership will revert to the landlord.

LARGE SCRAP OPPORTUNITY

Some of this Machinery and Equipment will possibly be sold for SCRAP at the Auction.

ROOFING MATERIAL INVENTORY

Approximately 6,700 Sheets of Arch Grade Stainless Steel Corrugated Roofing Panels; Panels are Formed From 304 Stainless Steel and Coated with an Approximate Mix of 50% Tin and 50% Zinc at 1 Mil Thickness, Approx. Size Break Down As Follows; (4,400) 36" X 120", (1,200) 20" X 120", (600) 24" X 120", (500) 36" X 96", Sheets Weigh Approx. 1.1 LBS/Sq. Ft.

SEE PHOTO

Large Quantity of Stainless Steel Roofing Accessories Including; Gutters, Downspouts, Inside and Outside Corners, Hangers, Elbows and Other Items Approx. and Partial Quantities Are; (125) 6" X 10' Gutters, (100) 6" X 20' Gutters, (100) 5" X 10' Gutters, (100) 4" X 10' Gutters, Approx. (150) 10" X 4" Dia. Downspouts, 100's of Fitting, Hangers and Other Items

Approx. 175,000 LBS Steel Coil Inventory Consisting of; (40) Coils, Widths Include 14", 20", 30" and 36", Raw, Material Includes; Tin, Coated and Painted

SEE PHOTO

Approx. 40,000 LBS of Stainless Sheet Stock Consisting of; 20", 24" and 36" Widths, 96" and 120" Lengths

Approx. 25,000 LBS Tin Coated Steel Flashing

STANDING SEAM ROOF SYSTEM FORMING EQUIPMENT

(2) ESE Model Panelformer 100 Trailer Mounted Standing Seam Roof Panel Formers; S/Ns 1000799 (1999) & 1000793 (1993), Forming Capacity 20" to 24", Tooling Installed on Both Units, Mounted on Single Axle Ball Hitch Trailers (New 1999/1993)

SEE PHOTO

(2) ESE Model K-9 Electric Powered Hand Held Traveling Type Standing Seam Closing Machines; S/Ns 211068 & 02055, Max Capacity 24 Gauge

SEE PHOTO

CNC METAL FOLDER 126" RAS Type 74-30 CNC Metal Folder; S/N 107/10, System 9000 CNC Control

SEE PHOTO

MATERIAL COATING LINE

20,000 LB Cincinnati / Century Model 20M Motorized Uncoiler w/ Coil Car; S/N 500070, 10 HP Hydraulics, 48" Mandrel, 14" Closed & 20" Expanded Diameters

40" Wide X 15' Long Motorized Rubber Belt Conveyor; 2 HP w/ Sizing Gate

42" Wide Dual Roll Coating Machine

44" Wide Manual Brake Rolls

40 HP Herr Voss Bridal Rolls; S/N N/A, 46.65 Ratio, Parallel Shaft Gear Drive

20,000 LB Herr Voss Motorized Recoiler w/ Coil Car; S/N 1420-14, 40 HP Drive, Coil Car w/ Racine Hydraulics, 42" Mandrel, Herr Load Cell Rolls w/ North American H3109 Discriminating Detector

Parker SSD Model 590-DRV Digital System Controller; S/N 293393, 16-Bit Microprocessor Controller w/ 118 KVA Transformer at 460 Volts (New 2009)

CUT-TO-LENGTH LINE

16,000 LB Cincinnati / Century Motorized Uncoiler w/ Coil Car; S/N N/A, 10 HP Hydraulics, 48" Mandrel, 16" Closed & 20" Expanded Diameters, 24" X 24" Coil Car w/ 20' of Floor Track

42" Wide Herr Voss 17-Roll Material Leveler; S/N N/A, 9 Over 8 Design, 10 HP (Rebuilt 2011)

42" Wide X 10 Ga. Stamco Flying Knife Cut-Off Shear; S/N 29, 7-1/2 HP

16' Max Length X 42" Wide Motorized Belt Type Conveyor; 5 HP, w/ Sizing Gate System

ECC Model MWB-136 Electronic Counting System

COIL PROCESSING EQUIPMENT

20,000 LB A.D.S. Motorized Recoiler w/ Coil Car; S/N 513-5, 39" Mandrel, 15 HP Hydraulic Push-Off, Herr Coil Car w/ Racine Hydraulics w/ 30' Floor Travel, 42" Wide Herr Load Cell Rolls w/ North American H3109 Discriminating Detector, Crip Control Inc. Control Panel, Allen Bradley Programming Terminal & Allen Bradley Model 1395 PLC Controls (Rebuilt and Updated Electrics 2005)

SEE PHOTO

20,000 LB (Approx.) Coil Up-Enders; 46" X 48" Platform

SEE PHOTO

20,000 LB (Approx.) Mfg. Unknown Hydraulic Uncoiler w/ Coil Car; 54" Mandrel, 16" Closed & 22" Expandable Diameters

10,000 LB American Steel Line Motorized Uncoiler; S/N 5777, 42" Mandrel, 16" Closed & 21" Expandable Diameters

40" Wide Aetna Standard 17-Roll Leveler; 9-Top / 8-Bottom Rolls, 7-1/2 HP

12% ONSITE BUYERS PREMIUM
15% ONLINE BUYERS PREMIUM

WEBCAST BIDDER INSTRUCTIONS

- > All Internet bidders must register for this auction at www.bidspotter.com at least 48-Hours Prior to the Sale Date, **if you do not you will not be approved.**
- > All Internet bidders must Post a Deposit of Approx. 25% of Your Planned Spending Budget or \$5,000.00 Minimum with Cincinnati Industrial Auctioneers in Order to be approved to Bid. Those who do Not Post the Deposit Will Not be Approved. **Period.**
- > Only Major Items Will be Available for Online Bidding. Please refer to the Listing on www.bidspotter.com for Available Online Items.
- > There is a 15% Buyer's Premium in Effect for All Online Purchases.
- > We Highly Recommend that Potential Buyers Attend this Auction & Bid Live Onsite. This will give you the Ability to Inspect the Items & Fully Appreciate Their Condition, Along with Saving You 3% of the Buyer's Premium.

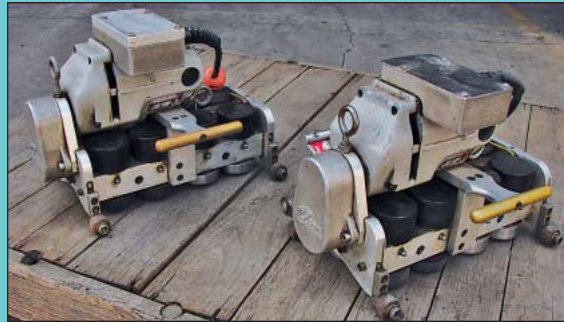


No Last Minute Registrations will be accepted. Make Sure to Register & Post Your Deposit No Later than 48-Hours Prior to the Start of the Auction.



(2) 25 HP Joy Twist-Air Model A-025TAN2C Rotary Screw Horizontal Tank Air Compressors

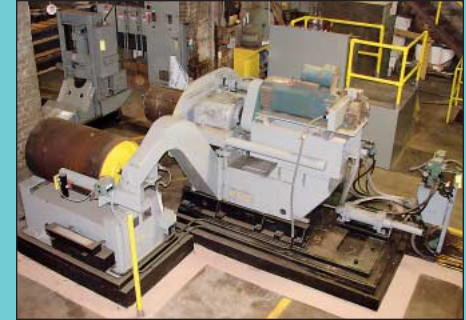
METAL ROOFING MANUFACTURER



(2) ESE Model Panelformer 100 Trailer Mounted Standing Seam Roof Panel Formers
(2) ESE Model K-9 Electric Powered Hand Held Traveling Type Standing Seam Closing Machines



Overall View 10,000 X 42" Wide X 10 Ga. Cut-to-Length Line



20,000 LB A.D.S. Motorized Recoiler w/ Coil Car

36" Wide Mfg. Unknown Pinch Rolls; 10 HP
36" Wide Yoder Slitter Head; S/N Y6546-473

(2) 36" Wide Mfg. Unknown Slitters; 24" Wide Steel Belt Infeed Conveyor

7-1/2 HP Joyce-Dayton Two-Roll Brush Stand; (2) 42" X 11" Dia. Brush Rolls

10 HP / 44" Wide Rubber Coated Pinch Rolls

Approx. (200) 19-1/2" to 36" Dia. Various Lengths Corrugated Coil Liners

FABRICATING EQUIPMENT

1/4" X 10' Cincinnati Model 1810 Mechanical Power Squaring Shear; S/N 20509, Power Back Gauge, Foot Pedal

72" Niagara Initial Pinch Plate Bending Rolls; 4" Dia. Rolls

12" X 18 Ga. Chicago Model S-1218 Hand Brake; S/N 310448

48" Chicago Manual Finger Brake; S/N N/A

42" Niagara Power Squaring Shear; 5 HP, Foot Pedal

36" Niagara Kick Shear

10" Racine Power Hack Saw; 2" Wide Blade

600 Amp Airco Model 6DDRS Welding Power Source; S/N 8632, w/ Leads

300 Amp Hobart Model TR-300 Arc Welder w/ Leads

18 KVA Lora Model L8-B Hand Held Spot Welder w/ Gantry System

ELECTRIC MOTORS

2,000 HP GE Synchronous Motor (13,200 VAC), 1,200 KW GE Generator (700 VDC), (3) 240 KW GE Generators (250 VDC), (3) 300 HP GE DC Motors (250 VDC), 100 HP/60 KW GE Motor Generator Set.

The Items Are Located In Rome, N.Y., Subject To High Bid Confirmation and / or withdrawal from sale, Inspection and Removal by appointment only

TOOLROOM MACHINERY

Davis Model 5 Keyseater; S/N 5-472

1 HP Bridgeport 8-Speed Vertical Mill; S/N J101168, 9" X 32" Table, PTF, w/ Bridgeport Shaping Attachment

50 Ton KR Wilson Model 37E Hydraulic H-Frame Press; S/N 2115

20" Walker Turner & 17" Wilton Single Spindle Floor Drills

(3) Harrison Size D.E. Pedestal Grinders

MISC. MACHINERY AND EQUIPMENT

(2) 72" X 88" X 37" Deep In-Floor Type Steel Construction Furnace Melting Pots

Kaufman Engineering Model CT Rotary Pallet Stretch Wrap

Machine; S/N 19668, 66" Dia. Platform, 100" Vertical Lift

16 Ton Northern Vertical Bench Mounted Hydraulic Pipe Bender

No. 19-1/2" & No. 21 Bliss OBI Presses

9" Long Chain Operated Crane Type Sheet Lifter

Ridgid Model 300 Powered Pipe Threader

14" Target Masonry Cut-Off Saw w/ Water System

AIR COMPRESSORS

(2) 25 HP Joy Twist-Air Model A-025TAN2C Rotary Screw Horizontal Tank Air Compressors; S/Ns 119171 & 119168

300 Gallon Vertical Air Receiving Tank

WOODWORKING EQUIPMENT

12" Delta / Invicta Model 34790A Table Saw; S/N 4054, 40" X 60" Table, RIP Fence

12" Delta Radial Arm Saw; S/N 2068, 1-1/2 HP

Delta Jointer; 6" X 32" Table

6" Delta Belt Sander

6" Mfg. Unknown Table Saw; 30" X 38" Table

Jet Model DC1900 Dual Bag Dust Collector; S/N 708608, 3 HP

Jet Model DC-610 Dust Collector; S/N 1072815

LIFT TRUCKS

15,000 LB (Est.) Hyster LP Gas Pneumatic Tire Lift Truck; S/N N/A, 825-15 Dual Front Tires, 108" Mast Height

12,000 LB Clark Model GF-120 LP Gas Cushion Tire Lift Trucks; S/N 2725

8,000 LB Yale Model G83P-080-886-086 LP Gas Pneumatic Tire Lift Truck; S/N 2-235109

FLAT BED AND DUMP TRUCK

1999 GMC Model C6500 Single Axle Flat Bed Dump Truck; Vin #1GDJ7H1C2XJ504654, 7.2 Liter Caterpillar Model 3126B Diesel Engine, 7-Speed Spicer Manual Transmission, 81,117 Miles, 8' Wide X 15' Dumping Steel Bed

**1998 International 4700 DT 466E Single Axle Flat Bed Straight Truck; VIN 1HTSCAAMOWH567250, 190 H.P. Diesel Engine, Automatic, A/C, Dual Fuel Tank, 134,800 Miles **Subject to Withdraw From Auction

SHOP EQUIPMENT

Large Quantity Shop Equipment Consisting of; Hydraulic Pallet Trucks, Pedestal and Floor Fans, (50) Various Sized Safety Cabinets, Self Dumping Hoppers, Steel Shelving, Lockers, Steel Tables, Storing Cabinets; Crib Area with Maintenance Items Including: Plumbing, Electrical, Hardware, Pipe, Conduit, Electric and Pneumatic Hand Tools, Hydraulic Jacks and Other Related Items



36" Wide Mfg. Unknown Pinch Rolls



New Coils Painted Trim Roofing Material



Approx. (200) 19-1/2" to 36" Dia. Various Width Corrugated Coil Liners



16,000 LB Cincinnati / Century Motorized Uncoiler w/ Coil Car

PUBLIC AUCTION

Plant Closed, the Former Assets of a METAL ROOFING MANUFACTURER

1 State Street
Follansbee, West Virginia 26037
20 Miles North of Wheeling, WV on the Ohio River

SALE DATE:
Thursday, Sept. 6th
STARTING: 9:00 AM

INSPECTION:
Wednesday, September 5th
10:00 AM to 4:00 PM



Cincinnati Industrial Auctioneers Inc.

2020 DUNLAP ST., CINCINNATI, OHIO 45214
PHONE (513) 241-9701 / FAX (513) 241-6760
WEBSITE: cia-auction.com



(6,700) Sheets Stainless Corrugated Roofing Panels



RAS CNC Folder



(2) ESE Rollformers

FIRST CLASS MAIL!

PRE-SORT
FIRST CLASS
U.S. POSTAGE
PAID
CINCINNATI, OHIO
PERMIT NO. 3593

Important Mail

TO BE DIRECTED TO THE ATTENTION
OF EXECUTIVE PERSONNEL



THURSDAY, SEPTEMBER 6TH PUBLIC AUCTION

Plant Closed, the Former Assets of a
**METAL ROOFING
MANUFACTURER**
1 State Street
Follansbee, West Virginia 26037
20 Miles North of Wheeling, WV on the Ohio River

IMPORTANT NOTICE:

Although information has been obtained from sources deemed reliable, the auctioneer makes no warranty or guarantee, expressed or implied, as to the accuracy of the information herein contained. It is for this reason that buyers should avail themselves of the opportunity to make inspection prior to the sale. This brochure is intended to provide general information of the equipment being offered and is subject to errors, omissions, additions or deletions. Please check with the Auctioneer's Office for a final listing. Items offered may or may not necessarily be sold as described and/or photographed in this brochure.

MAIL BIDS ACCEPTED WITH A 25% DEPOSIT

DIRECTIONS

Facility is Approx. 30 Miles West of Pittsburgh. From Rt. 22 Proceed South on WV Rt. 2 Approx. 5 Miles into Follansbee. Proceed to State St. in the Downtown Area & Turn Right onto State St. Proceed to Sale Site on Left. From Wheeling, WV Proceed North on Rt. 2 Approx. 20 Miles into Follansbee & Turn Left onto State St. Watch for Auction Signs

AUCTIONEER

Jeffrey L. Luggen
West Virginia State License No. 563



TERMS OF SALE

All equipment described herein will be sold "as is", "where is" to the highest bidder or bidders for cash in accordance with our regular terms and conditions of sale. Unless other satisfactory arrangements are made, a **25% deposit** in cash, certified or cashier's check payable to Cincinnati Industrial Auctioneers, Inc., **is required on all purchases.** Firm and personal checks accepted only if accompanied by a letter from your bank guaranteeing your funds. All sales are subject to state and/or local taxes unless a signed exemption form is presented at the time of purchase. **All balances are due at the conclusion of the sale.** No merchandise may be removed while the sale is in progress. **All bidders must comply with our Standard Terms of Sale,** copies of which will be available at the sale site or can be obtained from our website.

12% ONSITE BUYER'S PREMIUM
15% ONLINE BUYER'S PREMIUM



Sale Under The Management Of

CINCINNATI INDUSTRIAL AUCTIONEERS

auctioneers | appraisers | since 1961 | cia-auction.com | info@cia-auction.com
2020 Dunlap St., Cincinnati, Ohio 45214 Phone 513-241-9701 Fax 513-241-6760