

**TWO-DAY TWO-LOCATION AUCTION OF MAIL TRANSPORT EQUIPMENT
SERVICE CENTER INCLUDING (3) PALLETIZING STRAPPING SYSTEMS, STRETCH
WRAPPERS, SPOTTING TRACTORS, PALLET RACKING, AIR COMPRESSORS, & SHOP EQUIPMENT**

PUBLIC AUCTION

Bidspotter.com™
See Instructions on Page 3
To Become a Qualified Bidder on the Internet



Plants Closed

NEW BREED LOGISTICS, INC.

DAY ONE: TUESDAY, JUNE 2ND

NEW BREED LOGISTICS IL

850 Veterans Pkwy.
Bolingbrook, Illinois 60440

STARTING AT 10:00 AM CST

INSPECTION:

Monday, June 1st from 10:00 AM to 4:00 PM

DAY TWO: WEDNESDAY, JUNE 3RD

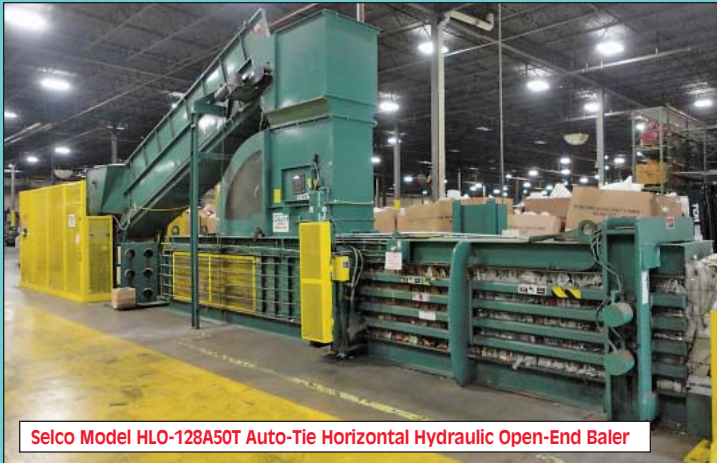
NEW BREED LOGISTICS GA

5400 Fulton Industrial Blvd., Suite D120
Atlanta, Georgia 30336

STARTING AT 10:00 AM EST

INSPECTION:

Tuesday, June 2nd from 10:00 AM to 4:00 PM



Selco Model HLO-128A50T Auto-Tie Horizontal Hydraulic Open-End Baler



(3) Strapex Model Leonardo Type SLL Automatic Two-Reel Strapping Machine



(2) 2007 Kalmar Industries Model 4X2 Diesel Spotting Tractors



(3) ITW Mima Model KC500 Rotary Arm Straddle Type Auto Stretch Wrap Machines



Sale Under The Management Of

CINCINNATI INDUSTRIAL AUCTIONEERS

auctioneers | appraisers | since 1961 | cia-auction.com | info@cia-auction.com

2020 Dunlap St., Cincinnati, Ohio 45214 Phone 513-241-9701 Fax 513-241-6760



TWO DAY – TWO LOCATION AUCTION



NEW 2012
Wulftec Model WRT-150 Floor Mounted Rotary Arm Stretch Wrapper



1998 Ottawa Model Commando 30 Single Axle Diesel Spotting Tractor



25 HP Ingersoll-Rand Model SSR-EP25SE Air Compressor



(3) Cascade Cat No. 35D-BBH-156 Rotating Tilting Attachments



Crown Model WP2030-45 Electric Pallet Truck w/ BHS Battery Handling System



(2) Integrated Palletizing / Stretch Wrap / Power Roller Conveyor Lines

DAY 1 – BOLINGBROOK, IL – JUNE 2, 2015

SPOTTING TRACTORS

Kalmar Industries Model 4X2 Diesel Powered Spotting Tractor; S/N 318484, 18,737 Hours Showing, Caterpillar Motor, Hydraulic Fifth Wheel (New 2007)

Kalmar Industries Model 4X2 Diesel Powered Spotting Tractor; S/N 319091, 26,454 Hours Showing, 8,266 Miles Showing (New 2007)

PALLETIZING SYSTEMS

(2) Integrated Palletizing / Stretch Wrap / Power Roller Conveyor Lines
SEE PHOTO

- (2) Strapex Model Leonardo Type SLL Automatic Two-Reel Strapping Machine; S/N 0440298 & 0430298, 5' x 6' Compression Head, 42" x 60" Max Pallet Size, 8' High Approx. Clearance, Allen Bradley Panelview 550 Controls
- (2) ITW Mima Model KC500 Rotary Arm Straddle Type Automatic Stretch Wrap Machines; S/Ns 20024 & 20023, 20" Film Rolls, 45" Max Vertical Wrap, Allen Bradley Panelview 550 Control
- Approx. 750' - 48" Wide X 10' Long Sections H.D. Floor Mounted Power Roller Conveyor; Each 10' Section; (2) 3/4 HP Motors, (2) Mounted Entry / Exit Electric Eyes Each Section, 2-1/2" Dia. Rollers, 2-3/4" Center to Center of Roller Spacing, Each Line has (2) Right Turns, Chain Link Driven, Configured as (2) Lines

BALER

Selco Model HLO-128A50T Auto-Tie Horizontal Hydraulic Open-End Baler; S/N 039870163, Allen Bradley PLC, 50 HP

Motor, 30" W X 20" Long Rubber Cleated Belt Conveyor, Hercules Tilter, 32" X 40" X 66" Long Bale Size, 26" X 36" SEE PHOTO

PALLET RACKING

(86) Sections - 42" D X 96" W X 20' High Adjustable Beam Pallet Racking w/ Decking; 3" X 3" Upright Posts
SEE PHOTO

(63) Sections - 42" D X 96" W X 16' High Adjustable Beam Pallet Racking w/ Decking
SEE PHOTO

(11) Sections - 42" D X 108" W X 20' High Adjustable Beam Pallet Racking w/ Decking

(18) Sections - 84" D X 96" W X 18' High Ridg-U-Rak "Push-Bak" Push/Pull Pallet Racking
SEE PHOTO

WELDERS

(2) 300 Amp Miller Shopmaster Welding Power Source w/ Wire Feeder
SEE PHOTO

Esab Model ESP-100i Plasma Cutter 15' Approx. x 45' Approx. x 15' High Approx. Three-Station H.D. Structural Steel Welding Booth

(2) Torit Two-Arm Overhead Mount Fume Collectors

AIR COMPRESSORS

25 HP Ingersoll Rand Model IRN25H-TAS Cabinet Enclosed Air Compressor; S/N BN0256U07150 **Blown Motor**

Ingersoll Rand Model D180IN Refrigerated Air Dryer

200 Gallon Aprox. Steel Fab Vertical

Air Receiving Tank

Posi-Zorb Oil / Water Separator

MISC. MACHINERY

Fanuc Model S-420iF Six-Axis Material Handling Robot; **No Controller**

Jet Model HVB5-7MW Horizontal Band Saw; S/N 4070468

Misc. Equipment Including; 8" Craftsman Pedestal D.E. Grinder, 20" Dayton Floor Drill, 14" Milwaukee Abrasive Cut-Off Saw, 6" Belt x 9" Disc Craftsman Floor Sander

MOBILE EQUIPMENT & RELATED

Mayville Model 2033 Electric Scissor Lift; S/N 8600106

Crown Model WP2030-45 Electric Pallet Truck w/ BHS Battery Handling System; 24 Volt w/ Built in Charger
SEE PHOTO

(3) Cascade Cat No. 35D-BBH-156 Rotating Tilting Attachments
SEE PHOTO

(3) 500 LB LTS Scale Corp Model PTEF-16-B1 Hand Pallet Truck w/ Built in Scale
SEE PHOTO

(30) 5,500 LB Hand Hydraulic Pallet Trucks; Makes: Vestil, Dayton, Lift-Rite & Multiton
SEE PHOTO

1,000 LB Taylor Dunn Electric Stand Up Cart Tugger
SEE PHOTO

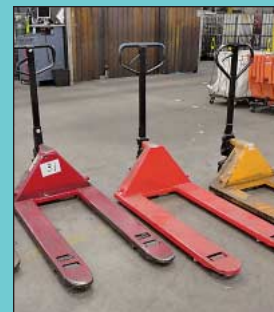
(4) New Breed Model MTEATER-003A Electric / Hydraulic Container Tilters

SHOP EQUIPMENT

(150) 40" X 48" X 34" High Collapsible Wire Baskets
SEE PHOTO



1,000 LB Taylor Dunn Electric Stand Up Cart Tugger



(30) 5,500 LB Hand Hydraulic Pallet Trucks



(3) 500 LB LTS Scale Corp Model PTEF-16-B1 Hand Pallet Truck w/ Built in Scale

NEW BREED LOGISTICS, INC.



(86) Sections – 42" D X 96" W X 20' High
Adjustable Beam Pallet Racking w/ Decking



(63) Sections – 42" D X 96" W X 16' High
Adjustable Beam Pallet Racking w/ Decking



(18) Sections – 84" D X 96" W X 18' High Ridg-U-Rak
"Push-Bak" Push/Pull Pallet Racking

Large Assortment Fiberglass Step
Ladders & Warehouse Ladders
(10) Banding Carts w/ Cordless
Electric Banding Tools SEE PHOTO
Toro Power Shift 1232 Gas Powered
Snow Blower

Shop Equipment Consisting of; (4)
Flammable Liquid Storage Cabinets, (10)
Two-Door Storage Cabinets, (15) 36" x 72"
x 33" High H.D. Steel Workbenches w/
Electric & Pneumatic Hook-Ups, (8)
Reelcraft Hose Reels, (75) Approx. Drum,
Pedestal & Column Mount Air Circulators,
Large Quantity Misc. Carts, Hoppers, (4)
Oxy-Acetylene Carts

Hand Tools Consisting of; 3/4"
Milwaukee Magnetic Base Drill, Dayton No.
3 Arbor Press, Porter Cable Model 725
Porta-Band Saw, 10" Delta Bench Saw,
Sockets, Pop Rivet Guns, Combination
Wrenches, Screwdrivers, Bolt Cutters, Wire
Crimpers, Pipe Wrenches, Cordless &
Pneumatic Power Tools, Levels, Squares,
Vise Grips, Steel Hammers, Crowbars,
Pliers, Electrical Cords

DAY 2 – ATLANTA, GA – JUNE 3, 2015

PALLETIZING SYSTEM

Integrated Palletizing / Stretch Wrap
/ Power Roller Conveyor Line

- > Strapex Model Leonardo Type
SLL Automatic Two-Reel
Strapping Machine; S/N N/A, 5' x
6' Compression Head, 42" x 60" Max
Pallet Size, 8' High Approx. Clearance,
Allen Bradley Panelview 550 Controls
- > ITW Mima Model "King Cobra"
Straddle Type Rotary Arm
Stretch Wrapper; S/N 20941
- > Approx. 380' - 48" Wide X 10'
Long Sections H.D. Floor
Mounted Power Roller Conveyor;
Each 10' Section; (2) 3/4 HP Motors,
(2) Mounted Entry / Exit Electric Eyes
Each Section, 2 1/2" Dia. Rollers, 2 3/4"
Center to Center of Roller Spacing, (2)
Right Turns, Chain Link Driven

STRETCH WRAPPER

Wulftec Model WRT-150 Floor
Mounted Rotary Arm Stretch
Wrapper; S/N 83576-1-0412 (New
2012) SEE PHOTO

BALER

30" X 60" Harris Model V5-HD-15
Vertical Cardboard Baler

SPOTTING TRACTORS

2004 Ottawa Diesel Spotting
Tractor; **Needs Repair**
1998 Ottawa Model Commando 30
Single Axle Diesel Spotting Tractor;
S/N 78678, Hours: 5488 SEE PHOTO

LIFT TRUCK BOX CLAMP

3,500 LB Cascade Model 35D-BBH-
156 Rotating Box Clamp Attachment;
S/N 1808141-T1 (New 2013)

PALLET RACKING

(13) Sections – 42" Deep X 96" W X
12' H Teardrop Adjustable Beam
Pallet Racking w/ Wire Decking; 3" X
3" Post on Uprights

(14) Sections – 42" Deep X 108" W X 24' H Teardrop Adjustable Beam Pallet Racking w/ Wire Decking

WELDERS

- 300 Amp Miller Shopmaster Mig
Welder w/ Wire Feeder
- 250 Amp Miller Millermatic 252
Mig Welder
- 100 Amp Thermal Dynamics Pak
Master 100 XL Plus Plasma Cutter
- Airflow System Fume Collector

AIR COMPRESSORS

25 HP Ingersoll-Rand Model SSR-
EP25SE Air Compressor; S/N
KE3336U96145, 95 CFM, 125 PSIG
SEE PHOTO

15 HP Ingersoll-Rand Model UP6- 15C-125 Horizontal Tank Mounted Air Compressor; S/N UP5235U07033, 55 CFM, 125 PSIG, Hours: 4,175.1 (New 2007)

Ingersoll-Rand Model Thermostar Air Dryer 300 Gallon Ingersoll-Rand Vertical Air Receiving Tank

SHOP EQUIPMENT

- (2) 5,000 Lb Pallet Trucks with
Metler Toledo Digital Scales
- Large Quantity of Yellow Barrier
Guard Rail
- Forklift Type Man Safety Cage
6" Belt & 12" Disc Dayton Combo
Sander
- Large Quantity of Breakroom
Furniture Including Tables and
Chairs
- Large Quantity of Shop Equipment
Including; Fireproof Cabinets, Craftsman
Toolboxes, Hand Tools, Pedestal Shop
Fans, Column Mount Fans, Steel
Workbenches w/ Vise, Floor Drill, Banding
Carts, Shop Ladders, Fiberglass Step
Ladders, D.E. Pedestal Grinders, Globe
Safety Mirrors, Employee Lockers



Fanuc Model S-420-F Six-
Axis Material Handling
Robot



(2) 300 Amp Miller
Shopmaster Welding
Power Source w/ Wire
Feeder



(10) Banding Carts w/ Cordless
Electric Banding Tools



Craftsman Toolboxes

WEBCAST BIDDER INSTRUCTIONS

- > All Internet bidders must register
for this auction at
www.bidspotter.com at least
48-Hours Prior to the Sale Date,
**if you do not you will not be
approved.**



REMOVAL NOTICE

All items must be removed
by June 19th. Any items
remaining after this time will
be considered abandoned
and scrapped.

FORK LIFT ADDITIONS

Possible additions of several
approx. 5,000 Lb. Yale LPG
Solid Tire Lift Trucks, see
catalog for details.

IMPORTANT AUCTION NOTICES

POSSIBLE SCRAP OPPORTUNITIES AT BOTH LOCATIONS
LOTS BEING ADDED DAILY



Large Quantity of Column Mount Fans & Pedestal Fans



(150) 40" X 48" X 34" High Collapsible Wire Baskets



Portable Plastic Totes

PUBLIC AUCTION

Surplus to NEW BREED LOGISTICS, INC.

SALE DATES:

DAY ONE: TUESDAY, JUNE 2ND
850 Veterans Pkwy., Bolingbrook, Illinois 60440
STARTING AT 10:00 AM CST

DAY TWO: WEDNESDAY, JUNE 3RD
5400 Fulton Industrial Blvd., Suite D120
Atlanta, Georgia 30336

STARTING AT 10:00 AM EST

INSPECTION:

The Day Prior to Each Auction From 10:00 AM to 4:00 PM



CINCINNATI
INDUSTRIAL AUCTIONEERS

auctioneers | appraisers | since 1961

Contact Information
2020 Dunlap St.
Cincinnati, Ohio 45214
Phone 513-241-9701
Fax 513-241-6760
www.cia-auction.com



Selco Auto-Tie Baler



(3) Strapex Auto Banders



(4) Spotting Tractors



(3) Mima Stretch Wrappers

FIRST CLASS MAIL!

PRE-SORT
FIRST CLASS
U.S. POSTAGE
PAID
CINCINNATI, OHIO
PERMIT NO. 3593

Important Mail

TO BE DIRECTED TO THE ATTENTION
OF EXECUTIVE PERSONNEL

(2) NEW BREED LOGISTICS FACILITIES - TWO DAY - 2 LOCATION AUCTION

PUBLIC AUCTION

PLANTS CLOSED

(2) NEW BREED LOGISTICS, INC.

DAY ONE: TUESDAY, JUNE 2ND - 10:00 AM CST
850 Veterans Pkwy., Bolingbrook, Illinois 60440

DAY TWO: WEDNESDAY, JUNE 3RD - 10:00 AM EST
5400 Fulton Industrial Blvd., Suite D120, Atlanta, Georgia 30336

IMPORTANT NOTICE:

Although information has been obtained from sources deemed reliable, the auctioneer makes no warranty or guarantee, expressed or implied, as to the accuracy of the information herein contained. It is for this reason that buyers should avail themselves of the opportunity to make inspection prior to the sale. This brochure is intended to provide general information of the equipment being offered and is subject to errors, omissions, additions or deletions. Please check with the Auctioneer's Office for a final listing. Items offered may or may not necessarily be sold as described and/or photographed in this brochure.

MAIL BIDS ACCEPTED WITH A 25% DEPOSIT

DIRECTIONS

Directions Location #1:

Bolingbrook Directions: From I-55 and I-355 Junction. Proceed South on I-55 to Exit 267 for S Bolingbrook Dr. Turn North onto Bolingbrook Dr. Proceed 0.1 Mile to Remington Blvd. Turn West onto Remington Blvd. Continue 2.5 Miles to Veterans Pkwy. Turn Left onto Veterans Pkwy. Continue 7 Mile to Sale Site on Left. Watch for Auction Parking and Auction Signs.

Directions Location #2:

ATL Directions: From Downtown Atlanta Proceed West on I-20 for 8 Miles to Exit 49 for GA-70/Fulton Industrial Blvd. Turn South onto GA-70 Continue 2.8 Miles to Sale Site on Left. Watch For Auction Parking and Auction Signs.

AUCTIONEERS

Jeffrey L. Luggen - IL License No. 441.000380
Jeffrey L. Luggen - GA License No. AUNR002532
Joseph M. Luggen - GA License No. AU004100
Ryan L. Luggen - Apprentice Auctioneer



TERMS OF SALE

All equipment described herein will be sold "as is", "where is" to the highest bidder or bidders for cash in accordance with our regular terms and conditions of sale. Unless other satisfactory arrangements are made, a **25% deposit** in cash, certified or cashier's check payable to Cincinnati Industrial Auctioneers, Inc., is required on all purchases. Firm and personal checks accepted only if accompanied by a letter from your bank guaranteeing your funds. All sales are subject to state and/or local taxes unless a signed exemption form is presented at the time of purchase. All balances are due at the conclusion of the sale. No merchandise may be removed while the sale is in progress. All bidders must comply with our Standard Terms of Sale, copies of which will be available at the sale site or can be obtained from our website.

15% ONSITE BUYER'S PREMIUM
18% ONLINE BUYER'S PREMIUM



Sale Under The Management Of

CINCINNATI **INDUSTRIAL AUCTIONEERS**

auctioneers | appraisers | since 1961 | cia-auction.com | info@cia-auction.com

2020 Dunlap St., Cincinnati, Ohio 45214 Phone 513-241-9701 Fax 513-241-6760