

PIGMENTS AND DYES PROCESSING FACILITY INCLUDING STAINLESS STEEL
CONTINUOUS DRYERS, RIBBON BLENDERS, FILTER PRESSES, TANKS OF ALL TYPES,
HEAT EXCHANGERS, ELECTRICS, MOTORS, PUMPS AND RELATED

PUBLIC AUCTION

Bidspotter.com
To Become a Qualified Bidder on the Internet
See Instructions on Page 2

Plant Closed

THE FORMER PROPERTY OF PCI, INC.

100 Wurts Road - Wurtland, Kentucky 41144

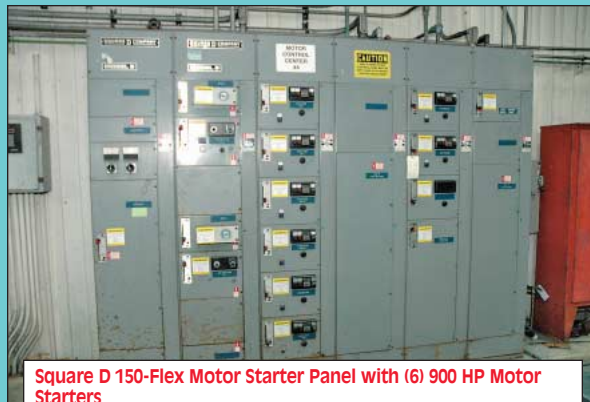
25 Miles West of Huntington, WV on the Ohio River

SALE DATE: THURSDAY, JUNE 26TH, STARTING AT 10:00 AM

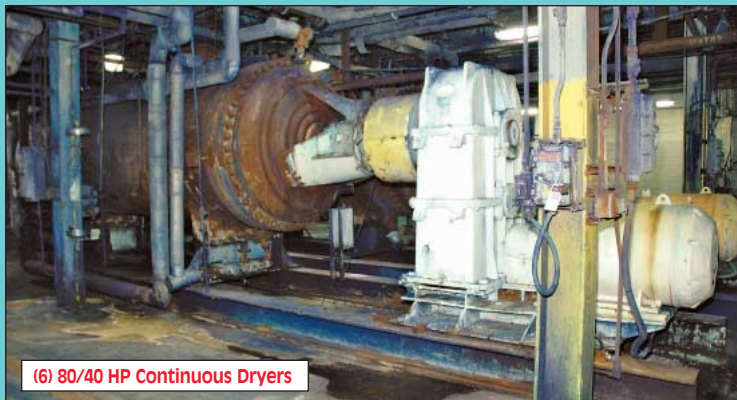
INSPECTION: WEDNESDAY, JUNE 25TH, FROM 10:00 AM TO 4:00 PM



100 HP Bepex Strong Scott Model SJS-4830 Solidaire Stainless Steel Continuous Dryer (New 2006)



Square D 150-Flex Motor Starter Panel with (6) 900 HP Motor Starters



(6) 80/40 HP Continuous Dryers



(2) 200 HP Nash Model CL2003 Liquid Ring Stainless Steel Vacuum Pumps



(2) Reactor Tanks



Siemens Model 1200G50-41-75SNLC "J-Press" 45 Plate Copper Stabilized Filter Press (New 20011)



(2) 300 Cubic Foot Jacketed Stainless Steel Ribbon Blender



THURSDAY, JUNE 26TH – 10:00 AM



(6) 80/40 HP Continuous Dryers



(2) 300 Cubic Foot Jacketed Stainless Steel Ribbon Blenders



Marley Model NC Cooling Tower

**NEW
2011**



(2) Filtra Systems Stainless Steel Verti-Presses or Dry Caking Presses



Superior Model WH-48.21.0-118 Thermal Oxidizer



Large Quantity of Pumps and Motors



(30) Various Size and Type Stainless Steel, Carbon Steel, and Fiberglass Tanks up to 20,000 Gallon Capacity

CONTINUOUS DRYERS

100 HP Bepex Strong Scott Model SJ5-4830 Soildaire Stainless Steel Continuous Dryer; S/N 2006034114, 168 Max RPM, Vessel: 2 PSIG at 500 Degrees Fahrenheit, Jacket: 50 PSIG at 500/200 Degrees Fahrenheit, 36' Long, 48" Diameter, 316 Stainless Steel Internals, Air Pre-Heaters, Hot Oil Jacket (New 2006)

SEE PHOTO

75 HP Bepex Strong Scott Continuous Dryer; 48" Diameter, 30' Long, Mild Steel Outer Shell, 316 Stainless Steel Inner Shell, Air Pre-Heater, Hot Oil Jacket

(6) 80/40 HP Continuous Dryers; 68" Diameter Stainless Steel I.D. Shell, 1" Steel Extruder Shell, 20' Shell Length, Dome Front and Rear Cape, Stainless Steel Interior Mixer Paddle, David Brown Gear Rewinder, Valves, Pumps, Skid Mounted, 232 PSIG (Low 58, Low 32 Work Pressure, 50 to 158 Work Temperature), 68 to 176 Working Temperature

SEE PHOTO

NASH VACUUM PUMP

(2) 200 HP Nash Model CL2003 Liquid Ring Stainless Steel Vacuum Pumps; No. 316 Stainless, Skid Mounted, with Related Filter System (Refurbished 2005)

SEE PHOTO

RIBBON BLENDERS

(2) 300 Cubic Foot Jacketed Stainless Steel Ribbon Blender; 10 PSIG, 350 Degrees Fahrenheit, Stainless Steel Ribbon Blades, 30 HP Motor (New 1981)

SEE PHOTO

FILTER PRESSES

Seimens Model 1200G50-41-75SNLC "J-Press" 45 Plate Copper Stabilized Filter Press; S/N F008692 48" X 48" Hi-Temp Poly Pro Plate Size, Max Feed Pressure 100 PSI, Air Supply Pressure 100 PSI, Hydraulic Clamping Pressure 3,000 PSI, Relief Pressure 3,400 PSI (New 2011)

SEE PHOTO

(3) JWI Model 1200G50-41-155N "J-Press" Copper Stabilized Filter Presses; S/N's N/A, 40-Filter Plates, 48" X 48" Hi-Temp Poly Pro Plate Size, 100 PSIG

SEE PHOTO

JWI Model 800G50-P5-205A "J-Press" Copper Stabilized Filter Press; S/N 4309, 100 PSI Pressure, (28) 31" X 31" Hi-Temp Poly Pro Plate Size

PROCESSING / STORAGE TANKS – ALL TYPES

(2) Carbon Steel Silos, 120,000 Lb. Urea Capacity, Load Sensors, Live Bottoms

SEE PHOTO

60,000 Gallon Carbon Steel Processing/Storage Tanks of All

Sizes Including; (2) 15,000 Gallon Carbon Steel Tanks, 15,000 Gallon Carbon Steel Tank, (2) 7,000 Gallon Carbon Steel Tanks (Epoxy Coated Inside)

20,000 Gallon Fiberglass Tank

(2) 15,000 Gallon Mild Steel Tank

SEE PHOTO

12,000 Gallon Mild Steel Tank (Cotic Storage Tank)

(2) 12,000 Gallon Mild Steel Tank

10,000 Gallon Mild Steel Tank

SEE PHOTO

10,000 Gallon Stainless Tank

(2) 10,000 Gallon Steel Tanks (Green),

7,500 Gallon Stainless Steel Vertical Tank,

7,500 Gallon .71" Thick Mild Steel Tank, 50 PSI, Blue Glass Lined, Storage Tank / Designed as a Reactor Vessel

7,000 Gallon Mild Steel Tank

5,000 Gallon Mild Steel Inkaloy Lined Tank

5,000 Gallon Dimpled Jacket Stainless Tank

SEE PHOTO

(6) 4,000 Gallon Carbon Steel Rotary Vacuum Dryer, Inside Stainless, Rotors Stainless, 50 HP Motors, 10 RPM Ribbon Blenders (Bought Used in 1990's)

(2) 1,000 Gallon Stainless Steel Tank, Rejenative Carbon Absorbers

(6) 250 Gallon Decom Stainless Tanks

(3) Stainless Sand Filters

PUMPS / MOTORS

30 HP Vacuum Pumps with Stainless Steel Enclosures

(40) Centrifugal Pumps up to 30 HP

Marley Heavy Duty Gear Reducer; S/N 30000267D20554-614

Lighting Agitators All Sizes

Jamesbury Electric Valves

(2) 200 HP Delta Electric Motors, 460 Volt, 1,780 RPM

VERTI-PRESSES

(2) Filtra Systems Stainless Steel Verti-Presses or Dry Caking Presses; (6) 48" X 115" Decks or Chambers

SEE PHOTO

TRANSFORMERS

4,000 KVA Electric Supply Company Transformer; S/N

090610-4, Volts H WDG: 2,470 GRDY/7200, Volts X WDG: 480

GRDY/277, 65 Degrees Rise

SEE PHOTO

750 KVA Prolec Oil Type Transformer; S/N PJ24-06, 3-Phase, 60 HZ, Input: 13,200/12,470, Secondary: 480/277

(15) 25 KW Power Apparatus Company Transformers, 600 Volt Input, 120 Volt Output, with GRI

WEBCAST BIDDER INSTRUCTIONS

- > All Internet bidders must register for this auction at www.bidspotter.com at least 48-Hours Prior to the Sale Date, **if you do not you will not be approved.**
- > All Internet bidders must Post a Deposit of Approx. 25% of Your Planned Spending Budget or \$5,000.00 Minimum with Cincinnati Industrial Auctioneers in Order to be approved to Bid. Those who do Not Post the Deposit Will Not be Approved. **Period.**
- > There is a 18% Buyer's Premium in Effect for All Online Purchases.
- > We Highly Recommend that Potential Buyers Attend this Auction & Bid Live Onsite. This will give you the Ability to Inspect the Items & Fully Appreciate Their Condition, Along with Saving You 3% of the Buyer's Premium.

No Last Minute Registrations will be accepted. Make Sure to Register & Post Your Deposit No Later than 48-Hours Prior to the Start of the Auction.



HUGE SCRAP OPPORTUNITY

A Large Quantity of the machinery at this Auction will likely be sold for scrap.

LARGE QUANTITY OF COPPER WIRE TO BE SOLD

THE FORMER PROPERTY OF PCI, INC.



Bry-Air Model VFB-6-E-700-DXP Skid Mounted Industrial Dehumidifier



500 KW Marathon Electric Magna Max Model 572RSL4027 Diesel Power Portable Generator Set



(2) International Boiler Works Model TJHC-12.5 Natural Gas Fired Hot Oil Boilers

ELECTRICAL MAIN SERVICE AND MOTOR STARTER DISTRIBUTION CENTER

LARGE QUANTITY OF COPPER WIRE TO BE SOLD

Square D Power Zone III Substation Panel, 480 Volt, 4,000 AMP, Power Logic Circuit Monitor Control

Allen Bradley Centerline Motor Control Center Starter Panel, 4,160 Volt, 900 HP, with 12 Motor Starter SEE PHOTO

Square D 150-Flex Motor Starter Panel with (6) 900 HP Motor Starters SEE PHOTO

(2) Square D Load Current Interrupter Switch Current Switch, 38,000 Max Rated Voltage

3,750 KVA Square D Three Phase Transformer; Primary: 34,500 Volt / 19,900 Volt, Secondary: 4,160 Volt SEE PHOTO

2,500 KVA Square D Transformer Three Phase; Primary: 34,500/19,900 Volt, Secondary: 480/277 Volt, IPC Resistor Box

ELECTRICAL SWITCHGEAR

Large Quantity of Electrical Switch Gear Consisting of: (2) 21-Unit Square D Model 5 Motor Control Center 800 AMP, Westinghouse Pow-R-Line C Main Service Panel, 26-Unit Square D

Model 5 Motor Control Center; (23) and (46) Unit Square D Motor Control Centers, Allen Bradley Powerflex 70 Control, (2) Cutler Hammer 600 Volt Disconnect Switches, Explosion Proof, Stainless Steel Panel Boxes, Allen Bradley Centerline Motor Control Center with (1) Circuit Breaker and (14) Disconnects, General Electric Evolution Series C-9000 Motor Control Center with Circuit Breaker and (19) Disconnects, SCI Solid State Controls Inc. Back-Up Power Control Panel, Bailey Infe 90 Control Operating Control Panel, Siemens Toster Main Service Panel

PORTABLE GENERATOR SET

500 KW Marathon Electric Magna Max Model 572RSL4027 Diesel Power Portable Generator Set; S/NWA-523967-0300, 480/277 Volt Three Phase, 120/208 Volt Single Phase, 6-Cylinder Volvo Diesel Engine, Fuel Filter Systems, Tanks, Mounted on Tandem Axle Van Body Trailer (New 2000)

COOLING TOWER

Marley Model NC Cooling Tower; S/N 1004119780054958, Aluminum Housing, with (5) 5 HP Water Feed Pumps System (New 2011) SEE PHOTO

INDUSTRIAL DEHUMIDIFIER

Bry-Air Model VFB-6-E-700-DXP Skid Mounted Industrial Dehumidifier; S/N 2008E8593, 190 Fahrenheit Max Out Temp SEE PHOTO

AIR HANDLER

Bessamaire Model EC-20AUSP-631 Air Handler; S/N 20-001088, Stainless Steel Enclosure, 20,000 CFM, 15 HP SEE PHOTO

THERMAL OXIDIZER

Superior Model WH-48.21.0-118 Thermal Oxidizer; 150 PSI, 16 Million BTU Per Hour (New 1990) SEE PHOTO

DUST COLLECTORS / BAG HOUSES

(2) 60 HP Baghouse Type Dust Collectors; 100 and 120 Bag, Stainless Steel Internals

(2) 75 HP Blower Units

50 HP Buffalo Forge Model 1200.BI.CL/1/CW Blower Fan Unit

40 HP Buffalo Forge Model 1085.BI.CL/1.CCW Blower Fan Unit

15 HP Dust Collector

STEAM BOILERS

(2) 500 HP Burntiam Model 3P-500-50-GO-GT Skid Mounted Steam Boilers; S/N 19854 and 19855, 500 HP, 16738 MBH, 17,250 Lbs. Per Hour, 150 PSI SEE PHOTO

(2) International Boiler Works Model TJHC-12.5 Natural Gas Fired Hot Oil Boilers; S/N 14967 and 14966, 10 Million BTU Per Hour, (1) with Power Flamer C-Max, Updated Burner

Lockwood Products Skid Mounted Boiler Feed Pump System; (4) 15 HP Pumps, Tanks, Controls

AIR COMPRESSORS / DRYERS / TANKS

200 HP Gardner Denver Air Cooled Rotary Screw Air Compressor w/ Auto Sentry Digital Control

200 HP Ingersoll Rand Air Cooled Rotary Screw Air Compressor (Motor Missing) SEE PHOTO

50 HP Gardner Denver Air Cooled Rotary Screw Air Compressor

(2) Pioneer Model PHE-1600 Air Dryers; S/N E3L445 and 61030

(6) Air Receiving Tanks From 500 Gallon to 2,000 Gallons

MISCELLANEOUS EQUIPMENT

(3) Marlo Water Softeners SEE PHOTO

5' X 5' Digital Platform Scale
Large Quantity Stainless Steel Pumps and Valves of All Descriptions and Sizes

(5) Quartz Electrical Valves

(2) 5' Jerguson Magnicator

(12) Various Size Heat Exchangers, Stainless Steel Internal, Carbon Steel Jacket

2 Ton Yale Self Traveling Monorail Hoist with 75' I-Beam

2 Ton Spanco Wall Mounted Jib Crane with Electric Hoist

(2) 2 Ton Yale Electric Cable Hoist

2 Ton Loadstar Electric Chain Hoist

(2) 12' X 20' Continental Stainless Steel Screw Trough Conveyor



Large Quantity of Electrical Switch Gear



Allen Bradley Centerline Motor Control Center Starter Panel, 4,160 Volt, 900 HP, with 12 Motor Starter



(3) JWI Model 1200G50-41-155N "J-Press" Copper Stabilized Filter Presses



4,000 KVA Electric Supply Company Transformer



Large Quantity of Electrical Equipment



3,750 KVA Square D Three Phase Transformer



(2) Carbon Steel Silos, 120,000 Lb. Urea Capacity, Load Sensors, Live Bottoms

PUBLIC AUCTION

Plant Closed

**THE FORMER
PROPERTY OF PCI, INC.**

100 Wurts Road
Wurtland, Kentucky 41144

25 Miles West of Huntington, WV on the Ohio River

**SALE DATE:
Thursday, June 26th
STARTING: 10:00 AM**

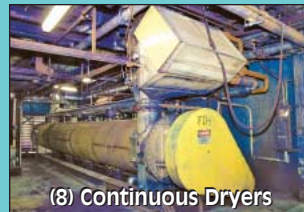
**INSPECTION:
Wednesday, June 25th
10:00 AM to 4:00 PM**



**CINCINNATI
INDUSTRIAL
AUCTIONEERS**

auctioneers | appraisers | since 1961

Contact Information
2020 Dunlap St.
Cincinnati, Ohio 45214
Phone 513-241-9701
Fax 513-241-6760
www.cia-auction.com



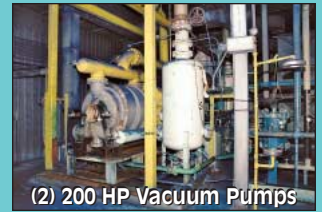
(8) Continuous Dryers



Large Quantity Electrical



(5) Filter Presses



(2) 200 HP Vacuum Pumps

FIRST CLASS MAIL!

PRE-SORT
FIRST CLASS
U.S. POSTAGE
PAID
CINCINNATI, OHIO
PERMIT NO. 3593

Important Mail

TO BE DIRECTED TO THE ATTENTION
OF EXECUTIVE PERSONNEL

THURSDAY, JUNE 26TH

PUBLIC AUCTION

Plant Closed

**THE FORMER
PROPERTY OF PCI, INC.**

100 Wurts Road
Wurtland, Kentucky 41144

25 Miles West of Huntington, WV on the Ohio River

IMPORTANT NOTICE:

Although information has been obtained from sources deemed reliable, the auctioneer makes no warranty or guarantee, expressed or implied, as to the accuracy of the information herein contained. It is for this reason that buyers should avail themselves of the opportunity to make inspection prior to the sale. This brochure is intended to provide general information of the equipment being offered and is subject to errors, omissions, additions or deletions. Please check with the Auctioneer's Office for a final listing. Items offered may or may not necessarily be sold as described and/or photographed in this brochure.

MAIL BIDS ACCEPTED WITH A 25% DEPOSIT

DIRECTIONS

Proceed West on OH-7/OH-52/Ohio River Scenic Byway for 12.9 Miles. Cross the Bridge into Ashland, KY and Merge onto to 12th St for 1/2 Mile. Turn Right onto Winchester Ave/US-23 N Proceed 5.9 Miles. Turn Right onto Greenup Ave/KY-3105/KY-67 Continue 3.2 Miles to Wurts Rd. Turn Right on to Wurts Rd Proceed to Sale Site Directly Ahead. Watch for Auction Parking and Auction Signs.

AUCTIONEERS

Jeffrey L. Luggen License No. RP 7066

Jerome A. Luggen License No. RP 7067

Joseph M. Luggen License No. RP 3521



TERMS OF SALE

All equipment described herein will be sold "as is", "where is" to the highest bidder or bidders for cash in accordance with our regular terms and conditions of sale. Unless other satisfactory arrangements are made, a **25% deposit** in cash, certified or cashier's check payable to Cincinnati Industrial Auctioneers, Inc., **is required on all purchases.** Firm and personal checks accepted only if accompanied by a letter from your bank guaranteeing your funds. All sales are subject to state and/or local taxes unless a signed exemption form is presented at the time of purchase. **All balances are due at the conclusion of the sale.** No merchandise may be removed while the sale is in progress. **All bidders must comply with our Standard Terms of Sale,** copies of which will be available at the sale site or can be obtained from our website.

**15% ONSITE BUYER'S PREMIUM
18% ONLINE BUYER'S PREMIUM**



**CINCINNATI
INDUSTRIAL
AUCTIONEERS**

auctioneers | appraisers | since 1961

Sale Under The Management Of

Cincinnati Industrial Auctioneers

2020 Dunlap St., Cincinnati, Ohio 45214

Phone 513-241-9701 Fax 513-241-6760

cia-auction.com | info@cia-auction.com



NEW MILL CAPITAL

In Conjunction With

New Mill Capital

1-888-801-6032

www.newmillcapital.com