

**STEEL STAIR & STRUCTURAL BUILDING
COMPONENT MANUFACTURER INCLUDING SHEARS,
CNC PRESS BRAKES & PAINT BOOTHS**

Bidspotter.com™
To Become a Qualified Bidder on the Internet
See Instructions on Page 2

PUBLIC AUCTION

MOST EQUIPMENT NEW 2006)

Featuring: 3/8" X 14' Adira GHR1040 Hydraulic Shear, 1/4' X 13'6" Adira GHR0640 Hydraulic Shear, 3/8" X 12' Standard Hydraulic Shear, 250 Ton X 12' Haco/Atlantic CNC Press Brake, 175 Ton X 13' Adira CNC Press Brake, 50 Ton Cincinnati & 150 Ton Chicago Press Brakes, (2) KMT Horizontal Miter Band Saws, (3) Marvel Vertical Band Saws, 16' W X 34' L X 14' H Global Finishing Solutions CD-1616-NDT Paint Booth (2006), Global Finishing Solutions Paint Mix Room(2006), 16' W X 27' L Devilbliss Paint Booth, HMI 50 Ton Ironworker, Lift Trucks, Air Compressors, OBI Presses, Welding Tables & Many More Related Items

Surplus Equipment – Former Property of

SHARON STAIRS, INC.

1481 Exeter Road – Akron, Ohio 44306
South Side of Akron Fulton International Airport



**NEW
2006**

175 Ton X 13' Adira Model QIHD-175-40 CNC Four-Axis Hydraulic Press Brake



**NEW
2003**

250 Ton X 12' Haco/Atlantic "EuroMaster" Model ERM-250-12 CNC Six-Axis Hydraulic Press Brake



**NEW
2006**

3/8" X 12' Standard Model AS375-12 Hydraulic Squaring Shear



**NEW
2006**

3/8" X 13' Adira Model GHR1040 Hydraulic Squaring Shear

**SALE DATE:
Thursday,
November 29th
STARTING AT 10:00 AM**

**INSPECTION:
Wednesday, Nov. 28th
10:00 AM to 4:00 PM**

www.cia-auction.com

Features:

- Upcoming Sale Information
- Liquidation & Equipment Section
- Email Auction Notification
- Recent Auction Results
- Lot Catalog Listings
- Photo Galleries
- Downloadable Forms
- Complete Terms of Sale
- Staff Profiles
- Reference Information



**NEW
2006**

16' Wide X 34' Long X 14' High Global Finishing Solutions Model CDG-1616-NDT Crossdraft Drive Type Paint Booth



Sale Under The Management Of

CINCINNATI INDUSTRIAL AUCTIONEERS

auctioneers | appraisers | since 1961 | cia-auction.com | info@cia-auction.com
2020 Dunlap St., Cincinnati, Ohio 45214 Phone 513-241-9701 Fax 513-241-6760



THURSDAY, NOVEMBER 29TH - 10:00 AM



175 Ton X 13' Adira Model QIHD-175-40 CNC Four-Axis Hydraulic Press Brake



250 Ton X 12' Haco/Atlantic "EuroMaster" Model ERM-250-12 CNC Six-Axis Hydraulic Press Brake



3/8" X 12' Standard Model AS375-12 Hydraulic Squaring Shear



3/8" X 13' Adira Model GHR1040 Hydraulic Squaring Shear



1/4" X 13' Adira Model GHR0640 Hydraulic Squaring Shear



9' X 9' Global Finishing Systems Model PM-R-89N Paint Mixing Room



16' Wide X 34' Long X 14' High Global Finishing Solutions Model CDG-1616-NDT Crossdraft Drive Type Paint Booth

PAINT BOOTHS AND EQUIPMENT

16' Wide X 34' Long X 14' High Global Finishing Solutions Model CDG-1616-NDT Crossdraft Drive Type Paint Booth; S/N 66331, 12' Wide X 14' High Double Door Each End, Approx. 17' Wide X 34' Deep X 17' High Outside Dimensions, (2) Man Door, Ansul Fire Suppression System, Modular Panel Bolt Together Construction (New 2006) SEE PHOTO

1500' 12" I-Beam Overhead Conveyor w/ Upright Supports; Heavy Duty Trolleys w/ Paint Hooks SEE PHOTO

9' X 9' Global Finishing Systems Model PM-R-89N Paint Mixing Room; S/N 66331-B, Fire Suppression System, Exhaust Fan, (2) Graco Pneumatic Paint Pumps, Modular Panel Bolt Together Construction (New 2006) SEE PHOTO

16' Wide X 27' Long X 11' High Devilbliss Drive-In Type Paint Spray Booth; 10' Wide X 7' High Double Door Each End, 112" X 112", Exhaust Fan w/ Duct, Modular Panel Bolt Together Construction SEE PHOTO

250' 6" I-Beam Overhead Conveyor w/Upright Supports; Heavy Duty Trolleys w/Paint Hooks (3) 15 Gallon Binks Pressure Paint Pots w/ Pneumatic Agitators and Spray Guns

CNC PRESS BRAKES
250 Ton X 12' Haco/Atlantic "EuroMaster" Model ERM-250-12 CNC Six-Axis Hydraulic Press Brake; S/N 81772, 144" Overall Bed Length, Front Adjustable Supports, Light Curtains, Haco BC-55 CNC Control w/ 4-Axis CNC Back Gage (New 2003) SEE PHOTO

175 Ton X 13' Adira Model QIHD-175-40 CNC Four-Axis Hydraulic Press Brake; S/N 6715-12387, Cyblec DNC-880 CNC Control, 157" Overall Bed Length, 124" Between Columns, Laser Safe Light Curtain, Foot Pedals, (20) Die Fingers, 4-Axis CNC Back Gage (New 2006) SEE PHOTO

(50) Pes Press Brake Including; (4) 12' Four-Way Die, 4' - 12' Gooseneck, Top & Bottom Die, etc.

MECHANICAL PRESS BRAKES

Adira Brake Tooling & Segmented Dies
150 Ton X 12' Chicago Model 1012-R Mechanical Press Brake; S/N L15071, 144" Overall Bed Length, 120" Between Housing, Power Front Operate Back Gage, Motorized Ram Adjustment SEE PHOTO

50 Ton X 8' Cincinnati Model 3-50 Mechanical Press Brake; S/N 29245, 96" Overall Bed Length, 78" Between Housings, Motorized Ram Adjustment SEE PHOTO

HYDRAULIC SQUARING SHEARS
3/8" X 13' Adira Model GHR1040 Hydraulic Squaring Shear; S/N 5180-12386E, Nominal Thickness 10MM, 11' Squaring Arm, (2) 3' Front Extension Arms, 48" Adira Programmable Back Gage (New 2006) SEE PHOTO
3/8" X 12' Standard Model AS375-12 Hydraulic Squaring Shear; S/N F7081708, 10' Squaring Arm, (2) 3' Extension Arms, 48" Programmable Back

Gage w/ Siemens Simatic Touch Screen Panel (New 2006) SEE PHOTO

1/4" X 13' Adira Model GHR0640 Hydraulic Squaring Shear; S/N 5146-12289-D, Nominal Thickness 6.5MM, 11' Squaring Arm, (2) 3' Extension Arms, 48" Adira Programmable Back Gage (New 2006) SEE PHOTO

AIR COMPRESSORS
50 HP Atlas Copco Model GA-37VSD "N" Drive Rotary Screw Air Compressor; S/N USA003402, 178 PSIG, Product #: 8972431180 (New 2002) SEE PHOTO

25 HP Ingersoll Rand Model T-30 Tank Mounted Air Compressor; 100 Gallon Tank
10 HP Quincy Model 35021 Horizontal Tank Air Compressor

HYDRAULIC IRONWORKER
50 Ton HMI Model 50/25 Hydraulic Ironworker; S/N 101-49-126, 24" Flat Shear, 5" X 5" Angle Shear, 3" Notcher, 14" Press Throat, Punch, Tooling SEE PHOTO

WEBCAST BIDDER INSTRUCTIONS

- > All Internet bidders must register for this auction at www.bidspotter.com at least 48-Hours Prior to the Sale Date, **if you do not you will not be approved.**
- > All Internet bidders must Post a Deposit of Approx. 25% of Your Planned Spending Budget or \$5,000.00 Minimum with Cincinnati Industrial Auctioneers in Order to be approved to Bid. Those who do Not Post the Deposit Will Not be Approved. **Period.**
- > **Only Major Items Will be Available for Online Bidding.** Please refer to the Listing on www.bidspotter.com for Available Online Items.
- > There is a 15% Buyer's Premium in Effect for All Online Purchases.
- > We Highly Recommend that Potential Buyers Attend this Auction & Bid Live Onsite. This will give you the Ability to Inspect the Items & Fully Appreciate Their Condition, Along with Saving You 3% of the Buyer's Premium.

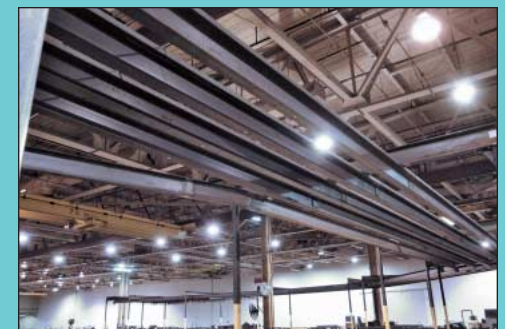


No Last Minute Registrations will be accepted. Make Sure to Register & Post Your Deposit No Later than 48-Hours Prior to the Start of the Auction.

SHORT SALE - PLEASE BE PROMPT



150 Ton X 12' Chicago Model 1012-R Mechanical Press Brake



1500' 12" I-Beam Overhead Conveyor w/ Upright Supports



16' Wide X 27' Long X 11' High Devilbliss Drive-In Type Paint Spray Booth



50 HP Atlas Copco Model GA-37VSD "N" Drive Rotary Screw Air Compressor



1 Ton David Round and Son Dual Arm Jib Crane



90 Ton Niagara Model A4-1/2 OBI Press

BAND SAWS

9" X 12" KMT Model BS-350-SH1-E Mitre Type Horizontal Band Saw; S/N 810685, CEB Controls, Manual Clamping (New 2006) SEE PHOTO

9" X 10" KMT Model BS-280-SH-E Mitre Type Horizontal Band Saw; S/N 050107001, KMT Controls, 16' Infeed & Outfeed Conveyor, Manual Clamping (New 2006) SEE PHOTO

18" Starite Model VT-460 Tilt Frame Vertical Band Saw; S/N 4600157 SEE PHOTO

(2) 18" Marvel Model 8M8-4 Tilt Frame Vertical Band Saws; S/N 810685, S/N 810463
8" Roll-In Model EF1459 Vertical Band Saw

11'6" Automec Easy Gage CNC Linear Gauge Saw; S/N 03060463 (Never Installed, New)

OBI PRESSES

90 Ton Niagara Model A4-1/2 OBI Press SEE PHOTO
(2) 60 Ton Bliss No. 21 OBI Presses

45 Ton Niagara A31/2 OBI Press; S/N 31449, 4" Stroke, 85 Strokes/Min., 27" X 17-1/2" Bed, 11-3/4" Shut Height

45 Ton V&O No. 31/2 OBI Press

30 Ton Walsh No. 3 OBI Press w/ Notching Die

10 Ton Rouselle No. 1A OBI Press w/ Notching Die

5 Ton Alva Model BT-5 Fallen OBI Press; S/N BT5-10 w/ Notching Die

WELDING & RELATED
Bug-O Model Bug-5080 Track Burner; S/N 0800197 w/ 17' Track

Hypertherm Powermax 1650 G3 Series Plasma Cutter No. 059266

Lincoln Pro-Cut 80 Plasma Cutter

400 Amp Hobart "Fabricator" Mig Welder

6' X 10' X 1" H.D. Steel Layout/Welding Table

(4) 4' X 24' H.D. Steel Layout/Welding Tables SEE PHOTO

48" X 20" H.D. Steel Tayout Table

Torch Parts, Regulators, Leads, Air Hose and Related Supplies

(45) Welding Screens w/ Framework

CRANES / JIBS

1 Ton David Round and Son Dual Arm Jib Crane; 15' Arm, C&M Hoists SEE PHOTO

(2) 1/2 Ton David Round and Son Dual Arm Jib Cranes; 15' Arms, C&M Hoists

3 Ton X 13' Ohio Mechanical Cable Hoist w/ Bridge

3 Ton X 45' Approx Ohio Mechanical Overhead Bridge Crane

(4) 1 Ton X 30' Approx Mfg Unknown Overhead Bridge Cranes

(2) 1 Ton P&H Hoists & (1) 2Ton Dayton Hoist

LIFT TRUCKS

10,000 LB Hyster Model S-100E Propane Lift Truck; S/N C004D091, 182" Lift Height, Hard Tires

8,000 LB Master Craft Model MCL832 Rough Terrain Diesel Lift Truck; S/N 00038,

Side Shift, 16-9-24 Front Tires, 60" Forks (4,196 Hours)

MISC. & SHOP EQUIPMENT

16" X 48" South Bend Lathe; S/N 43901, 3-jaw Chuck, Live Center, 16" Swing, 48" Bed

(2) 40' X 8' Shipping Containers SEE PHOTO

Back and Decker/Hougler Magnetic Base Drill
Red Arrow H-Frame Press; S/N U-30998

Black and Decker/Dewalt Model 483 Panel Saw

Dewalt DW716 Compound Mitre Saw

Hilti, Titan and Ramset Concrete Fasteners

10,000 LB Hydroway "Hydroscale" Crane Scale

Large Quantity of Shop Equipment; (75) Steel Horses, (200) Steel Cart and Warehouse Trucks, Roller Conveyor, Steel Benches, Cabinets, Dump Hopper, Part Cabinet, Collapsible Plastic Totes, Dock Plate, (35) Pedestal Fans, Parts and Maintained Crib Items Locker, Cafeteria Tables, Chairs, Steel Scrap



(2) 40' X 8' Shipping Containers



Bank View of Hyster and Master Craft Lift Trucks To 10,000 LBS



18" Starite Model VT-460 Tilt Frame Vertical Band Saw



18" Marvel Model 8M8-4 Tilt Frame Vertical Band Saw



Large Quantity of Steel Saw Horses, Carts, Tubs



(4) 4' X 24' H.D. Steel Layout/Welding Tables



18" Marvel Model 8M8-4 Tilt Frame Vertical Band Saw



8" Roll-In Model EF1459 Vertical Band Saw

PUBLIC AUCTION

Surplus Equipment – Former Property of

SHARON STAIRS, INC.

1481 Exeter Road – Akron, Ohio 44306
South Side of Akron Fulton International Airport

SALE DATE:
Thursday, November 29th
STARTING AT 10:00 AM

INSPECTION:
Wednesday, November 28th
10:00 AM to 4:00 PM



Cincinnati Industrial Auctioneers Inc.

2020 DUNLAP ST., CINCINNATI, OHIO 45214
PHONE (513) 241-9701 / FAX (513) 241-6760
WEBSITE: cia-auction.com



175 Ton Adira Press Brake



GFS Paint Booth (2006)



250 Ton Haco Six-Axis Press Brake



(2) Adira Shears

FIRST CLASS MAIL!

PRE-SORT
FIRST CLASS
U.S. POSTAGE
PAID
CINCINNATI, OHIO
PERMIT NO. 3593

Important Mail

TO BE DIRECTED TO THE ATTENTION
OF EXECUTIVE PERSONNEL

THURSDAY, NOVEMBER 29TH

PUBLIC AUCTION

Surplus Equipment – Former Property of

SHARON STAIRS, INC.

1481 Exeter Road – Akron, Ohio 44306
South Side of Akron Fulton International Airport

IMPORTANT NOTICE:

Although information has been obtained from sources deemed reliable, the auctioneer makes no warranty or guarantee, expressed or implied, as to the accuracy of the information herein contained. It is for this reason that buyers should avail themselves of the opportunity to make inspection prior to the sale. This brochure is intended to provide general information of the equipment being offered and is subject to errors, omissions, additions or deletions. Please check with the Auctioneer's Office for a final listing. Items offered may or may not necessarily be sold as described and/or photographed in this brochure.

MAIL BIDS ACCEPTED WITH A 25% DEPOSIT

DIRECTIONS

From the I-77 & I-76 Junction just South of Downtown Akron. Head South on I-77 to Exit 122A for US-224 East. Take the First Exit on US-224 E for Kelly Ave. Turn North onto Kelly Ave and Cross over the Highway to the First Street Emmitt Rd. Turn Right onto Emmitt Rd and Continue 1/4 Mile to Sale Site on Left. Watch for Auction Parking and Auction Signs.

AUCTIONEERS

Cincinnati Industrial Auctioneers, Inc. – License No. 63-1983-10439

Jeffrey L. Luggen – License No. 57-1983-33789

Jerome A. Luggen – License No. 52-1983-33799

Jeffrey M. Luggen – License No. 2010-0000-26

Joseph M. Luggen – License No. 2010-0000-19

John F. Rome – License No. 57-2000-84249



TERMS OF SALE

All equipment described herein will be sold "as is", "where is" to the highest bidder or bidders for cash in accordance with our regular terms and conditions of sale. Unless other satisfactory arrangements are made, a **25% deposit** in cash, certified or cashier's check payable to Cincinnati Industrial Auctioneers, Inc., **is required on all purchases.** Firm and personal checks accepted only if accompanied by a letter from your bank guaranteeing your funds. All sales are subject to state and/or local taxes unless a signed exemption form is presented at the time of purchase. **All balances are due at the conclusion of the sale.** No merchandise may be removed while the sale is in progress. **All bidders must comply with our Standard Terms of Sale,** copies of which will be available at the sale site or can be obtained from our website.

12% ONSITE BUYER'S PREMIUM
15% ONLINE BUYER'S PREMIUM



Sale Under The Management Of

CINCINNATI INDUSTRIAL AUCTIONEERS

auctioneers | appraisers | since 1961 | cia-auction.com | info@cia-auction.com
2020 Dunlap St., Cincinnati, Ohio 45214 Phone 513-241-9701 Fax 513-241-6760