

PUBLIC AUCTION

CNC AND CONVENTIONAL MACHINE SHOP INCLUDING CNC TURNING CENTERS, CNC VMC'S, MILLS, LATHES, GRINDERS, TOOLING, SHOP AND SUPPORT EQUIPMENT

Plant Closed

TRIO PRECISIONEERING, INC.

1415 E. 363 Road – Eastlake, Ohio 44095
18 Miles Northeast of Cleveland, OH

SALE DATE
WED., SEPTEMBER 23RD
STARTING: 10:00 AM

INSPECTION: Tuesday, September 22nd
from 10:00 AM to 4:00 PM



CINCINNATI
INDUSTRIAL
AUCTIONEERS

Contact Information
2020 Dunlap St.
Cincinnati, Ohio 45214
Phone 513-241-9701
Fax 513-241-6760
www.cia-auction.com

auctioneers | appraisers | since 1961

25" X 68" Table



(2) Mazak Model MTV-655-60 CNC VMC's

FIRST CLASS MAIL!

PRE-SORT
FIRST CLASS
U.S. POSTAGE
PAID
CINCINNATI, OHIO
PERMIT NO. 3593



Important Mail

TO BE DIRECTED TO THE ATTENTION
OF EXECUTIVE PERSONNEL

CNC AND CONVENTIONAL MACHINE SHOP INCLUDING CNC TURNING CENTERS, CNC VMC'S, MILLS, LATHES, GRINDERS, TOOLING, SHOP AND SUPPORT EQUIPMENT

Plant Closed

TRIO PRECISIONEERING, INC.

1415 E. 363 Road – Eastlake, Ohio 44095
18 Miles Northeast of Cleveland, OH

SALE DATE:
Wednesday, September 23rd
Starting at 10:00 AM

INSPECTION:
Tuesday, September 22nd from 10:00 AM to 4:00 PM



(2) Mazak Model QT-25 CNC Turning Centers

DIRECTIONS: From Route 2 Approx. 15 Miles East of Downtown Cleveland Exit at Vine Street – Route 640. Proceed North on Vine Street Approx. 7 Miles to E.363 Street. Turn Left onto E363 and Proceed to Sale Site on Left. Watch For Auction Signs

IMPORTANT NOTICE: Although information has been obtained from sources deemed reliable, the auctioneer makes no warranty or guarantee, expressed or implied, as to the accuracy of the information herein contained. It is for this reason that buyers should avail themselves of the opportunity to make inspection prior to the sale.

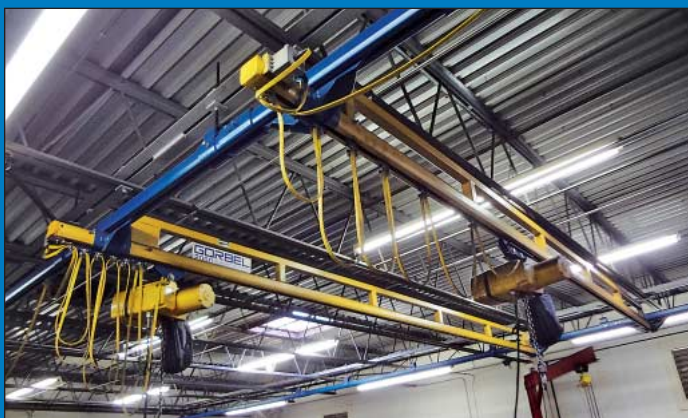
TERMS OF SALE: All equipment described herein will be sold "as is", "where is" to the highest bidder or bidders for cash in accordance with our regular terms and conditions of sale. Unless other satisfactory arrangements are made, a **25% deposit** in cash, certified or cashier's check payable to Cincinnati Industrial Auctioneers, Inc., is required on all purchases. Firm and personal checks accepted only if accompanied by a letter from your bank guaranteeing your funds. All sales are subject to state and/or local taxes unless a signed exemption form is presented at the time of purchase. **All balances are due at the conclusion of the sale.** No merchandise may be removed while the sale is in progress. **All bidders must comply with our Standard Terms of Sale**, copies of which will be available at the sale site or can be obtained from our website.

MAIL IN BIDS: Mail in bids will be accepted with a 25% deposit.

15% ONSITE BUYERS PREMIUM • 18% ONLINE BUYERS PREMIUM

Auctioneers

Cincinnati Industrial Auctioneers, Inc. – OH License No. 63-1983-10439
Jeffrey L. Luggen – OH License No. 57-1983-33789
Jerome A. Luggen – OH License No. 62-1983-33799
Joseph M. Luggen – OH License No. 2010-0000-19
John F. Rome – OH License No. 57-2000-84249
Ryan L. Luggen – Apprentice Auctioneer



4 Ton x 22' Span x 95' Long Gobel Ceiling Suspended Bridge Crane



CNC Machining & Turning Centers By Mazak, Hitachi & Others & Large Quantity Tooling



Lathes, Mills, Grinders, Drills & Conventional Machine Tools With Tooling & Accessories



Fork Lifts, Air Compressors, Scrap, Cranes, Shop & Support Equipment

CNC TURNING CENTERS

(2) Mazak Model QT-25 CNC Turning Centers; S/N 74758 and 75385-K, Mazatrol Cam T-2, 10" Chuck, 20" Swing, 38" Centers, Chip Conveyor SEE PHOTO

Mori Seiki Type SL-6 CNC Turning Center; S/N 163, Fanuc Systems 6T, 18" Chuck, 34" Swing, 36" Centers, 12-Pos. Turret, Chip Conveyor

Hitachi Seiki Model HT-40S CNC Turning Center; S/N HTS40089, Fanuc 10TE-F, 15" Chuck, 18" Swing, 72" Centers, Steady Rest, 10-Pos. Turret, Chip Conveyor

Hitachi Seiki Model HT-25S CNC Turning Center; S/N HTS-25122, Fanuc 10T, 10" Chuck, 28" Swing, 44" Centers, 10-Pos. Turret, Chip Conveyor

Daimichi Model B70-200 CNC Turning Center; S/N 18280, Fanuc 6T, 15" Chuck, 28" Swing, 80" Centers, Steady Rest, 12-Pos. Turret, Chip Conveyor

CNC VMC'S

(2) Mazak Model MTV-655-60 CNC VMC's; S/N 112680 and 106486, Mazatrol M32B, 25" X 68" Table, 30-Pos. ATC, 50 Taper, Coolant SEE PHOTO

Hitachi Seiki Type VA-55 CNC VMC; S/N 55107, Fanuc, 20" X 62" Table, 50 Taper, 30-Pos. ATC, MMK Tecnar Rotary Table w/ Tailstock

Hitachi Seiki Type VA-35 CNC VMC; S/N 35162, Fanuc Control, 14" X 40" Table, 40 Taper, 30-Pos. ATC

(2) Excel Model 510 CNC VMC's; S/N ES791021 and ES78954, 16" x 27" Table, GE Fanuc OM, 16-Pos. ATC, 40 Taper

Makino Type FNC105-A20 CNC VMC; S/N A53-114, 16" X 60" Table, Fanuc 3000C, 50 Taper, 20-Pos. ATC, 4th Axis Indexer with Tailstock

CNC HMC
Shibaura Model BMC-6B Two-Pallet CNC HMC; S/N 21449, 25" X 25" Pallets, 50 Taper, 30-Pos. ATC, Tosnuc 500 Control Console

VERTICAL MILLING MACHINES
3 HP Lincoln Model 1VSC Vertical Milling Machine; S/N 75299, Anilam Spirit II DRO, 9" X 42" Table (New 1986)

3 HP Lincoln Model MV1236C Vertical Milling Machine; S/N 76496, Anilam Spirit II DRO, 9" X 50" Power Table (New 1987)

2 HP Bridgeport Vertical Milling Machine; S/N 201021, Mitutoyo DRO, 9" X 42" Table

HORIZONTAL MILLING MACHINES
K&T Model H Dial Type Horizontal Milling Machine; S/N N/A, 18" X 76" Table

(2) K&T Dial Type Horizontal Milling Machines; S/N 7-8075 and 14-7380, 12" X 56" Table, Vertical Milling Attachment

Milwaukee Duplex Horizontal Milling Machine; S/N N/A, 18" X 72" Table, Dual Vertical Heads

GUN DRILLS
1/2" Pratt and Whitney Model 1818 Gun Drill; S/N 161RB, 1 HP, 72" Stroke, 4" 3-Jaw Chuck
1/2" Barnes Gun Drill; S/N 410-187, 10 HP, 72" Stroke, (2) 6" 3-Jaw Chucks
1/2" Shop Built Gun Drill; S/N N/A, 10 HP, 60" Stroke, 11" 3-Jaw Chuck, 36" X 36" T-Slotted Table

Large Lot of Gun Drills from .120" - 1.8"

TURRET LATHE
Warner and Swasey Model 2-A Turret Lathe; S/N 1507405, 18" 4-Jaw Chuck, 6-Pos. Turret, 72" Swing, 80" Centers, 4" Spindle Hole
Libby Model 3H Turret Lathe; S/N N/A, 26" 4-Jaw Chuck, 6-Pos. Turret, 32" Swing, 96" Centers, 10" Spindle Hole

LATHES
24" X 60" HES Model HES24 Engine Lathe; S/N 13127, 10" Chuck, Steady Rest
12" X 26" Dainichi Model DLG-L-6/6 Toolroom Lathe; S/N 6030, Quick Release Toolholder, 9" 3-Jaw Chuck

ACCESSORIES AND TOOLING
Large Quantity Machine Accessories and Tooling Including; Approx. (200) 50 Taper Tool Holders, Approx. (100) 40 Taper Tool Holders, Vises, Rotary Tables, Dividing Heads, Tapping Heads, 1000's of Carbide Inserts, Drills Taps, End Mills, Reamers and Many More Items

GRINDERS
Heald Model No. 172 Plain Gap Bed Grinder; S/N 23249, 15" 3-Jaw Chuck, Heald Red Head, 8,500 Max RPM Spindle Speed, 3 HP
KO Lee Tool Model BA960 Tool and Cutter Grinder; S/N 13785BF, 5" X 26" T-Slotted Table
11" X 40" Grisset Model M1000 Hand Feed Surface Grinder; S/N 988
6" X 18" Boyar-Schultz Surface Grinder

MISC. MACHINERY
Davis Model No. 4 Keyseater
30 KW Tocco Model 2MG303-3 Induction Heating System; S/N TJ2153, 440 Volt, 59 Amps
100 Ton Shop Built C-Frame Hydraulic Press; 16" X 84" Table, 5 HP
(2) 25 Ton Power Team Model SPM256C C-Frame Hydraulic Presses

25 Ton Power Team H-Frame Press with PUJ1200B Hydraulic Unit
48" X 36" Gamm Ind. Sand Blast Cabinet; S/N 3625647
Darex Model E85/90 Endmill Sharpener
Sunnen Model MBB-1600 Precision Hone; S/N 45086, 1/2 HP, Coolant

15 KVA Electro Arc Model 2DBOT Disintegrator; S/N 8291, 18" X 26" T Table
12" PMC Work-A-Matic Vertical Band Saw
Daito Model GA140 Horizontal Band Saw; S/N 20KD50RH3
(3) 15" Powermatic Model 1150 Pedestal Drills

BRIDGE, JIB CRANES & MONORAILS
4 Ton x 22' Span x 95' Long Gorbelt Ceiling Suspended Bridge Crane; (2) 2,000 Lb. Gorbelt Single Beam Bridges, (2) 1 Ton Electric Chain Hoist, Pendant SEE PHOTO

(2) 1 Ton x 22' Gorbelt Monorail Bridge Cranes; 1 Ton Yale Hoist, Pendant, Approx. 95' Long Ceiling Suspended
(5) Column Mount Jib Cranes w/ Electric Hoists to 12' Arm and 1-Ton

(6) 1/2 Ton & 1 Ton Yale, Jet, Milwaukee Electric Chain Hoists
STEEL
1,000's of Lbs. of Steel Inventory and Machine Parts

LIFT TRUCKS
5,000 Lb. Caterpillar Model C5000 LP Gas Solid Tire Lift Truck; S/N AT9002398, 3-Stage Mast, 200" Lift, Side Shift, 8500 Hours

5,000 Lb. Allis Chalmers Model F5024PS LP Gas Solid Tire Lift Truck; S/N 45416000, 2-Stage Mast, 150" Lift
2,400 Lb. Allis Chalmers Model ACE30EV-36V Electric Lift Truck; S/N DCJ134460, 3-Stage Mast, 192" Lift, 42" Forks with 36 Volt Charger

AIR COMPRESSORS
15 HP Quincy Model OMBDA-CA21B Cabinet Type Air Compressor; S/N 82018
10 HP Speedaire Model 3Z0630 Horizontal Tank Air Compressor
7.5 HP Kellogg-American Model D011V Air Compressor; S/N 837089

5 HP Dayton Vertical Tank Air Compressor
Van Air Model VR50 Refrigerated Air Dryer

INSPECTION EQUIPMENT
Starrett Model Rapid Check CMM; S/N 85163, 33" X 54" Table, Renishaw PH8 Probe, HP Computer System, HP 3.0 Utilities Software
14" OPG Model XL14 Optical Comparator; S/N XL140454, 6" X 27" Work Table

Inspection Equipment
Consisting of; Wilson Model 3JR Hardness Tester, Mitutoyo Model TM Microscope, 24" X 36" - 30" X 48" - 18" X 24" Granite Surface Plates, Gage Block Set, Dial Bore Gages, Height Gages, OD Micrometer Sets, Parallels, Depth Gages and Many Other Related Items

SHOP EQUIPMENT
Shop Equipment Including; No. 3 Arbor Press, Atlas No. 3 Compound Mandrel Press, (10) Various Size Vidmar Tooling Cabinets, (6) Self Dumping Hoppers, Rubbermaid and Steel Carts, Milwaukee Mag Base Drill, Multi-Shelf Tooling Carts, Shop Ladders, Fans, Steel Shelving, Pallet Rack, Maple Top Work Benches, Air Flow System, Mist Collectors, Portable Tool Boxes, Steel Corrugated Tubs and Many Other Related Items

WEBCAST BIDDER INSTRUCTIONS

All Internet bidders must register for this auction at www.bidspotter.com at least 48-Hours Prior to the Sale Date, **if you do not you will not be approved.**

All Internet bidders must Post a Deposit of Approx. 25% of Your Planned Spending Budget or \$5,000.00 Minimum with Cincinnati Industrial Auctioneers in Order to be approved to Bid. Those who do Not Post the Deposit Will not be Approved. **Period.**